

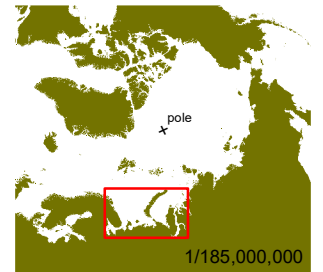
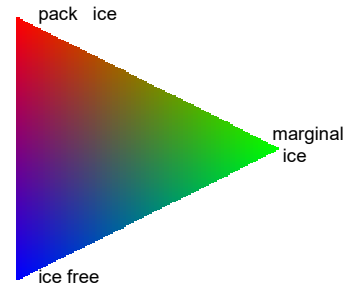
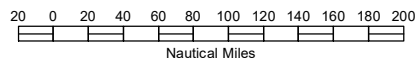
**White Sea to Kara Sea**  
**Sea Ice Presence**  
**Apr 01 to Apr 15**  
**2007 - 2024 (268 days)**

scale: 1/8,000,000  
 projection: Equal Area Azimuthal (90°)

US National Ice Center 4/16/2024  
 Data compiled from US National Ice Center daily sea ice analysis records



**US National / Naval Ice Center**  
 4251 Suitland Road  
 NOAA Satellite Operations Facility  
 Washington, DC 20395  
 tel. 301.817.3911  
[www.natice.noaa.gov](http://www.natice.noaa.gov)



1/185,000,000