

**White Sea to Kara Sea  
Sea Ice Presence  
Dec 1 to Dec 15  
2007 - 2024 (270 days)**

scale: 1/8,000,000  
projection: Equal Area Azimuthal (90°)

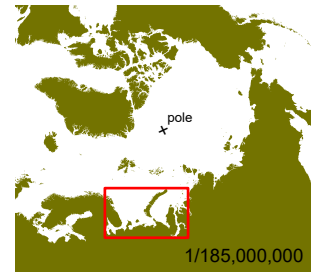
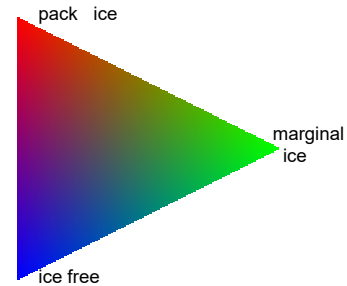
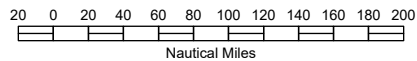
US National Ice Center 12/17/2024  
Data compiled from US National Ice Center daily sea ice analysis records



**USNIC**

**US National / Naval Ice Center**  
4251 Suitland Road  
NOAA Satellite Operations Facility  
Washington, DC 20395

tel. 301.817.3911  
[www.natice.noaa.gov](http://www.natice.noaa.gov)



1/185,000,000