

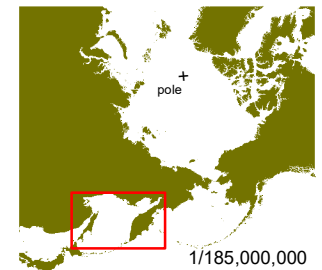
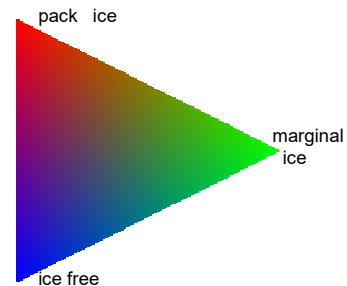
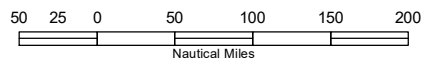
Sea of Okhotsk
Sea Ice Presence
Jan 01 to Jan 15
2025 (15 days)

scale: 1/9,000,000
 projection: Equal Area Azimuthal (90°)

US National Ice Center 1/16/2025
 Data compiled from US National Ice Center daily sea ice analysis records



US National / Naval Ice Center
 4251 Suitland Road
 NOAA Satellite Operations Facility
 Washington, DC 20395
 tel. 301.817.3911
www.natice.noaa.gov



1/185,000,000