

Antarctica - Map A

Sea Ice Presence

Apr 16 to Apr 30

2007 - 2025 (283 days)

scale: 1/23,500,000
projection: Equal Area Azimuthal (-90°)

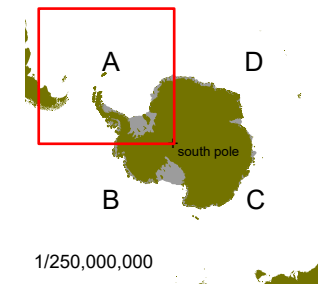
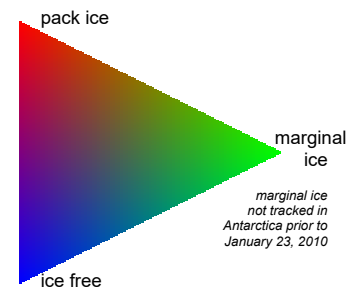
US National Ice Center 5/2/2025

Data compiled from US National Ice Center
daily sea ice analysis records



US National / Naval Ice Center
4251 Suitland Road
NOAA Satellite Operations Facility
Washington, DC 20395

tel. 301.817.3911
www.natice.noaa.gov



1/250,000,000