

Ross Sea **Sea Ice Presence** **May 01 to May 15** **2025 (15 days)**

scale: 1/12,500,000
 projection: Equal Area Azimuthal (-90°)

US National Ice Center 5/16/2025

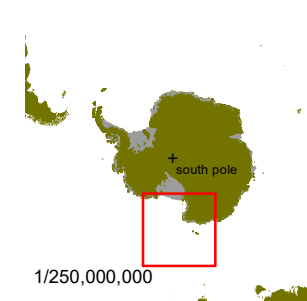
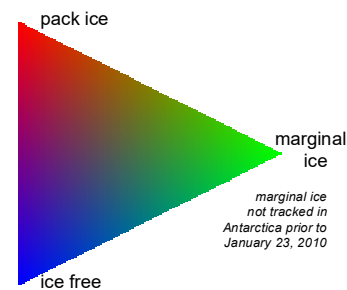
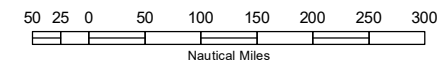
Data compiled from US National Ice Center
 daily sea ice analysis records



USNIC

US National / Naval Ice Center
 4251 Suitland Road
 NOAA Satellite Operations Facility
 Washington, DC 20395

tel. 301.817.3911
www.natice.noaa.gov



1/250,000,000