

# Ross Sea

## Sea Ice Presence

### Jul 1 to Jul 15

### 2007 - 2025 (284 days)

scale: 1/12,500,000  
projection: Equal Area Azimuthal (-90°)

US National Ice Center 7/17/2025

Data compiled from US National Ice Center  
daily sea ice analysis records



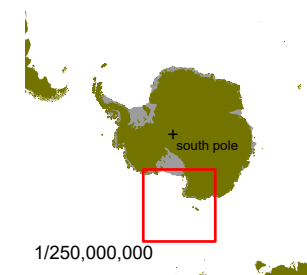
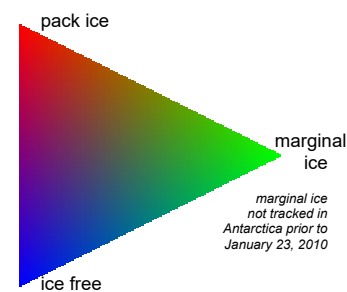
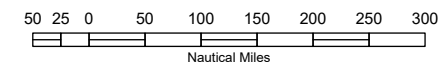
**USNIC**

**US National / Naval Ice Center**

4251 Suitland Road  
NOAA Satellite Operations Facility  
Washington, DC 20395

tel. 301.817.3911

[www.natice.noaa.gov](http://www.natice.noaa.gov)



1/250,000,000