

Antarctica - Map A

Sea Ice Presence

Nov 16 to Nov 30

2025 (15 days)

scale: 1/23,500,000

projection: Equal Area Azimuthal (-90°)

US National Ice Center 12/1/2025

Data compiled from US National Ice Center
daily sea ice analysis records

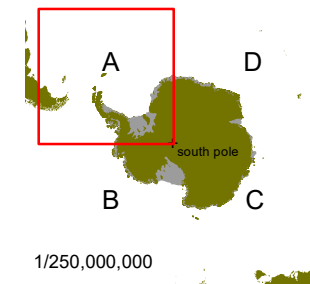
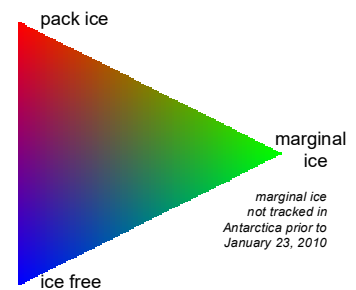


US National / Naval Ice Center

4251 Suitland Road
NOAA Satellite Operations Facility
Washington, DC 20395

tel. 301.817.3911

www.natice.noaa.gov



1/250,000,000