

Antarctica - Map C

Sea Ice Presence

Jan 01 to Jan 15

2007 - 2026 (296 days)

scale: 1/23,500,000
projection: Equal Area Azimuthal (-90°)

US National Ice Center 1/16/2026

Data compiled from US National Ice Center
daily sea ice analysis records

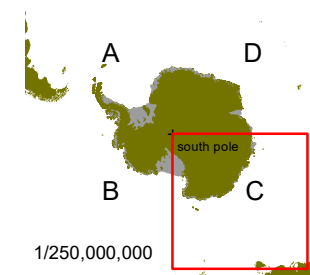
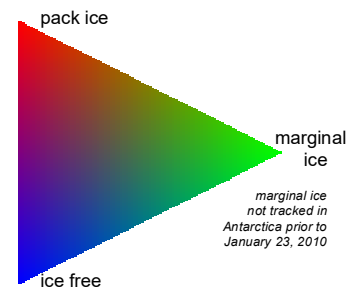


USNIC

US National / Naval Ice Center

4251 Suitland Road
NOAA Satellite Operations Facility
Washington, DC 20395

tel. 301.817.3911
www.natice.noaa.gov



1/250,000,000