

**Bering Sea**  
**Sea Ice Presence**  
**May 16 to May 31**  
**2022 - 2026 (80 days)**

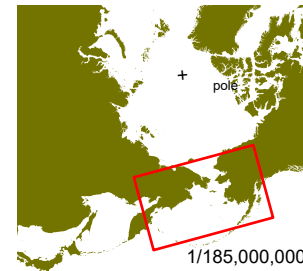
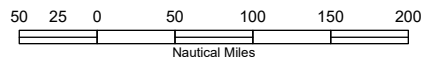
scale: 1/9,000,000  
 projection: Equal Area Azimuthal (90°)

US National Ice Center 6/2/2026  
 Data compiled from US National Ice Center  
 daily sea ice analysis records



**US National / Naval Ice Center**  
 4251 Suitland Road  
 NOAA Satellite Operations Facility  
 Washington, DC 20395

tel. 301.817.3911  
[www.natice.noaa.gov](http://www.natice.noaa.gov)



1/185,000,000

