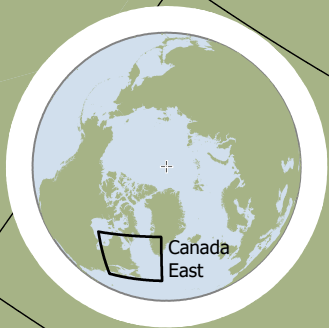
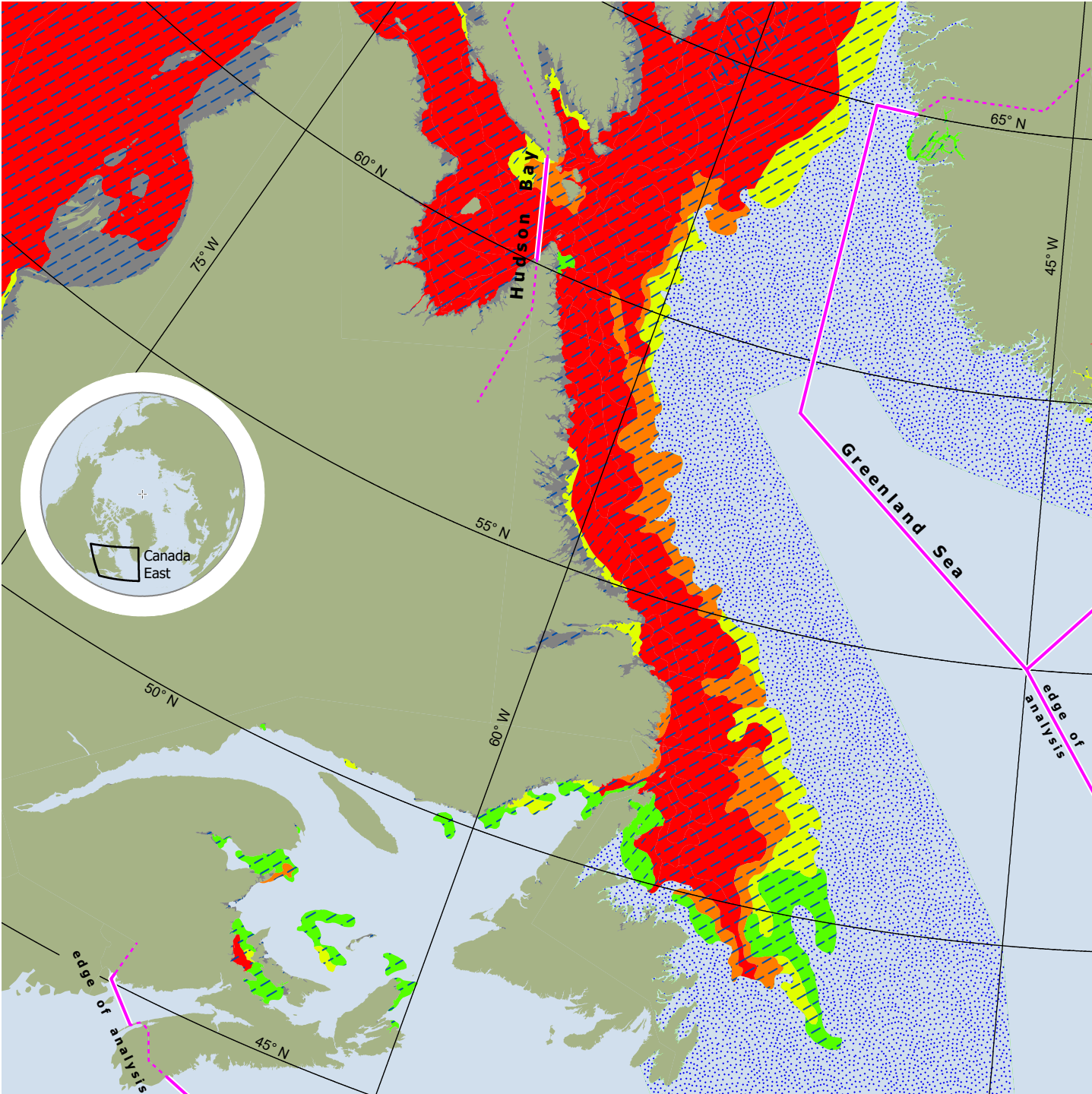


U S NATIONAL ICE CENTER
REGIONAL SYNOPSIS

CANADA EAST

ICE DATE: 10 APR 2026 week 14

MAP PRODUCED: 10 APR 2026

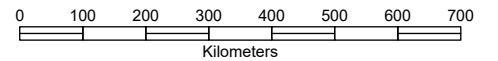


Total Ice Concentration

- Fast Ice
- 9-10 Tenthths
- 7-8 Tenthths
- 4-6 Tenthths
- 1-3 Tenthths
- Ice Free
- Bergy Water
- Land

Estimated Maximum Thickness of Level Ice

- Old Ice
- > 30 cm
- 10-30 cm
- < 10 cm
- Ice Free



projection: Polar Stereographic
central meridian: 180°
standard parallel: 60° north

US National Ice Center
4251 Suitland Road
NOAA Satellite Operations Facility
Washington, DC 20395

tel. 301.817.3911
<https://usicecenter.gov>

Ice Desk tel. 301.817.3975
NIC_ANALYST@NOAA.GOV

