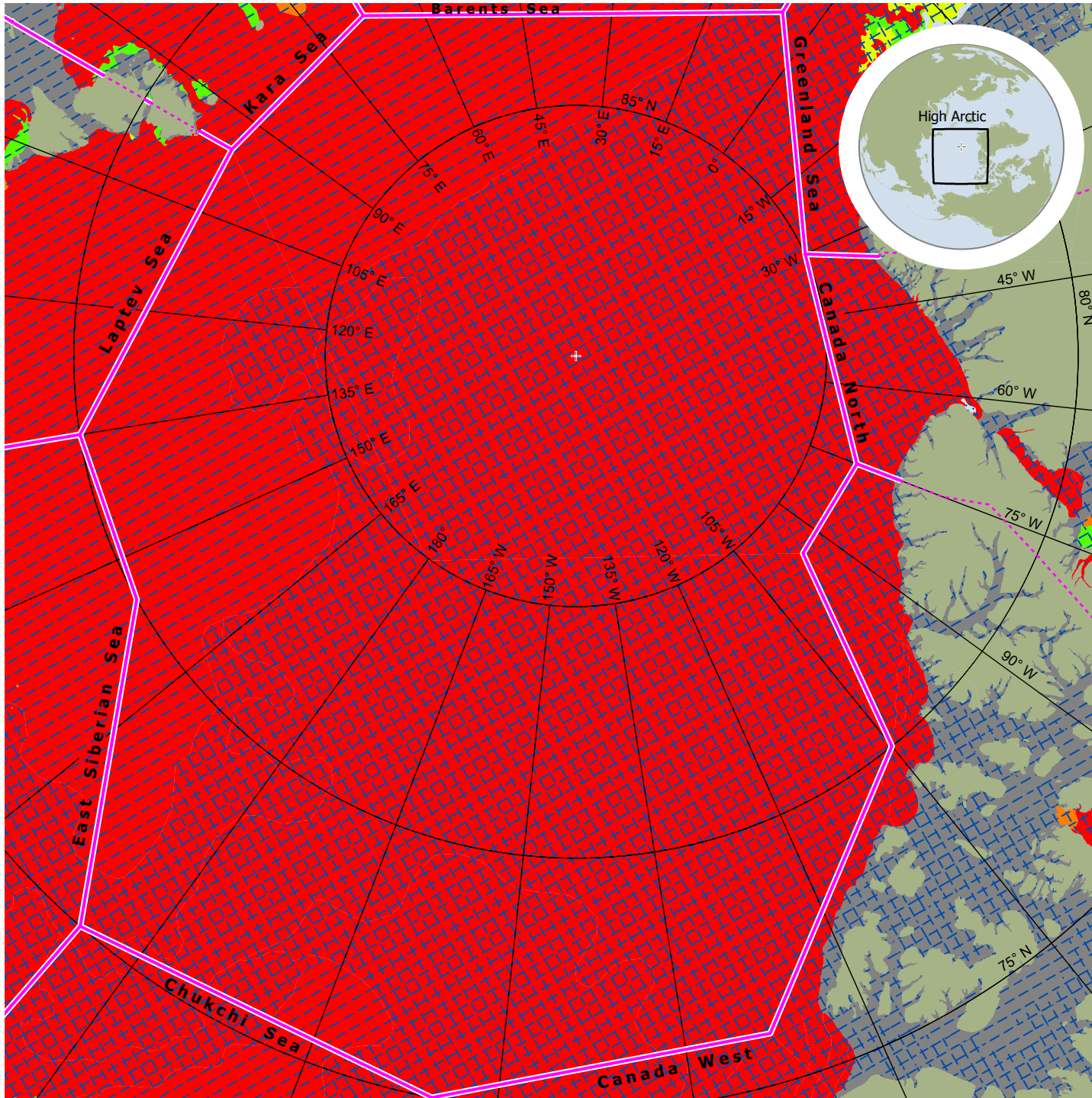


U S NATIONAL ICE CENTER
REGIONAL SYNOPSIS

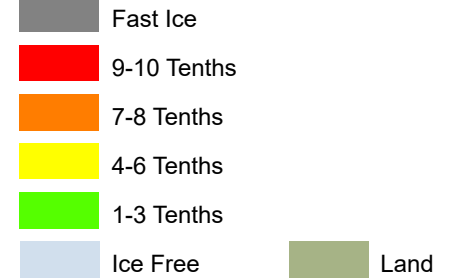
HIGH ARCTIC

ICE DATE: 19 JUN 2026 week 24

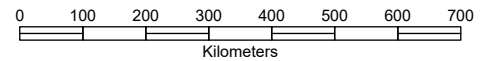
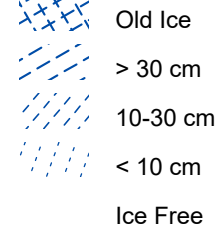
MAP PRODUCED: 19 JUN 2026



Total Ice Concentration



Estimated Maximum Thickness of Level Ice



projection: Polar Stereographic
central meridian: 180°
standard parallel: 60° north

US National Ice Center
4251 Suitland Road
NOAA Satellite Operations Facility
Washington, DC 20395

tel. 301.817.3911
<https://usicecenter.gov>

Ice Desk tel. 301.817.3975
NIC_ANALYST@NOAA.GOV

