

FECN19 CWIS 151800

THIRTY-DAY ICE OUTLOOK FOR THE GREAT LAKES ISSUED BY ENVIRONMENT CANADA ON 15 JANUARY 2025 FOR MID-JANUARY TO MID-FEBRUARY. THE NEXT SCHEDULED BULLETIN WILL BE ISSUED ON 31 JANUARY 2025.

Lake Superior

Near normal to slightly above normal air temperatures were experienced over Lake Superior from mid-December to mid-January. Temperatures are forecast to be slightly below normal from mid-January to mid-February.

Thunder Bay.

January 15-25:

- 4-6 tenths new and thin lake ice except consolidated thin lake ice along the shore in the extreme northeastern section.

January 26-February 5:

- 9-9+ tenths thin lake ice except consolidated thin lake ice along parts of the shore.

February 6-15:

- 9-9+ thin and medium lake ice except consolidated medium lake ice in the northeastern section.

Nipigon and Black Bays.

January 15-20:

- 7-8 tenths thin lake ice except consolidated medium lake ice in western Nipigon Bay and in Black Bay. Consolidated thick lake ice in northern Black Bay.

January 21-February 15:

- 7-8 tenths thin and medium lake ice except consolidated medium and thick lake ice in western Nipigon Bay and consolidated thick lake ice in Black Bay.

From Grand Marais Minnesota to the entrance to Nipigon Bay.

January 15-24:

- Open water except 1-3 tenths new lake ice along parts of the shore.

January 25-February 10:

- Open water except 4-6 tenths new and thin lake ice along parts of the shores.

February 11-15:

- 1-3 tenths new lake ice except 7-8 tenths thin lake ice along parts of the shores.

From Grand Marais to Duluth.

January 15-21:

- Open water except 1-3 tenths new lake ice near Duluth.

January 22-February 8:

- Open water except 7-8 tenths new and thin lake ice near Duluth.

February 9-15:

- 1-3 tenths new lake ice except 9-9+ tenths new and thin lake ice in the extreme western section. Consolidated thin and medium lake ice near Duluth.

Southern Lake Superior west of Keweenaw Peninsula.

January 15-18:

- Open water except 7-8 tenths new and thin lake ice along the shore and amongst the Apostle islands. Consolidated medium lake ice in Chequamegon Bay.

January 19-25:

- Open water except 9-9+ tenths new and thin lake ice along the shore and amongst the Apostle islands. Consolidated medium lake ice in Chequamegon Bay.

January 26-February 4:

- 7-8 tenths new and thin lake ice except consolidated medium lake ice in Chequamegon Bay.

February 5-15:

- 9-9+ tenths new and thin lake ice except consolidated thick lake ice in Chequamegon Bay.

Southern Lake Superior east of the Keweenaw Peninsula.

January 15-22:

- Open water except 1-3 tenths new lake ice along parts of the shore. 7-8 tenths thin lake ice in sheltered bays.

January 23-February 4:

- Open water except 7-8 tenths new and thin lake ice along the shore. Consolidated thin lake ice in sheltered bays.

February 5-15:

- 7-8 tenths new and thin lake ice except consolidated thin and medium lake ice in sheltered bays.

Whitefish Bay.

January 15-22:

- Open water except 4-6 tenths new and thin lake ice along parts of the shores. Consolidated thin lake ice along parts of the shores and in Batchewana Bay.

January 23-31:

- 1-3 tenths new and thin lake ice except 7-8 tenths thin lake ice along parts of the shores. Consolidated thin lake ice along parts of the shores and in Batchewana Bay.

February 1-8:

- 4-6 tenths new and thin lake ice except 9-9+ tenths thin lake ice along the shores. Consolidated thin and medium lake ice along parts of the shores and in Batchewana Bay.

February 9-15:

- 9-9+ tenths thin and medium lake ice except consolidated medium lake along parts of the shores and in Batchewana Bay.

From Whitefish Bay northwards to Michipicoten Bay.

January 15-February 5:

- Open water.

February 6-15:

- Open water except 4-6 tenths new lake ice along parts of the shore.

From Michipicoten Bay to the entrance to Nipigon Bay.

January 1-25:

- Open water.

January 26-February 5:

- Open water except 1-3 tenths new lake ice along the shore near Nipigon Bay.

February 6-15:

- Open water except 1-3 tenths new and thin lake ice along the shore in the western section.

Elsewhere in Lake Superior.

January 15-February 4:

- Ice free to open water.

February 5-11:

- Ice free to open water except 4-6 tenths new lake ice in the extreme western section.

February 12-15:

- Ice free to open water except 7-8 tenths new and thin lake ice in the western section.

Lake Michigan

Near normal air temperatures were experienced over Lake Michigan from mid-December to mid-January. Temperatures are forecast to be near normal from mid-January to mid-February.

Green Bay.

January 15-20:

- 1-3 tenths new lake ice except 9-9+ tenths thin lake ice in the southern section and in Bays de Noc. Consolidated thin and medium lake ice in the northern section of Bays de Noc and in the extreme southern section.

January 21-February 1:

- 4-6 tenths thin lake ice except 9-9+ tenths thin lake ice in the southern section and near Bays de Noc. Consolidated thin and medium lake ice along the southern shore and in the Bays de Noc.

February 2-11:

- 9-9+ tenths thin lake ice except 9-9+ tenths medium lake ice in the southern section and near Bays de Noc. Consolidated medium lake ice along the southern shore and in the Bays de Noc.

February 12-15:

- 9-9+ tenths thin and medium lake ice except consolidated medium lake ice in the southern section and near Bays de Noc. Consolidated thick lake ice along the extreme southern shore and in the northern section of Bays de Noc.

Northeastern Lake Michigan.

January 15-26:

- Open water except 7-8 tenths new and thin lake ice along the northern shore and near the Straits of Mackinac.

January 27-February 6:

- 1-3 tenths new and thin lake ice except 9-9+ tenths thin lake ice along the northern shore and near the Straits of Mackinac.

February 7-15:

- 1-3 tenths new and thin lake ice except 9-9+ tenths thin and medium lake ice along the northern shore and in the northeastern section.

Elsewhere in Lake Michigan.

January 15-18:

- Open water except 1-3 tenths new ice along parts of the southern and western shores.

January 19-25:

- Open water except 4-6 tenths new lake ice along parts of the southern and western shores.

January 26-February 10:

- Open water except 7-8 tenths new and thin lake ice along the southern and western shores.

February 11-February 15:

- Open water except 9-9+ tenths thin and medium lake ice along the southern and western shores.

Lake Huron and Georgian Bay

Near normal air temperatures were experienced over Lake Huron and Georgian Bay from mid-December to mid-January. Air temperatures are forecast to be near normal from mid-January to mid-February.

North Channel.

January 15-18:

- 4-6 tenths new and thin lake ice except consolidated thin lake ice along parts of the shores and in the extreme western section.

January 19-25:

- 7-8 tenths new and thin lake ice except 9-9+ tenths thin lake ice along parts of the shores. Consolidated thin lake ice in the extreme eastern and extreme western sections.

January 26-February 5:

- 9-9+ tenths thin lake ice except consolidated medium lake ice in the extreme eastern and extreme western sections.

February 6-15:

- 9-9+ tenths thin and medium lake ice except consolidated medium lake ice in the eastern and extreme western sections.

St Mary's River.

January 15-24:

- Consolidated thin and medium lake ice.

January 25-February 10

- Consolidated medium lake ice.

February 11-15:

- Consolidated thick lake ice.

South of Manitoulin Island westward to north-western Lake Huron.

January 15-19:

- Open water except 1-3 tenths new and thin lake ice along parts of the shore. Consolidated thin lake ice in sheltered bays.

January 20- February 3:

- Open water except 4-6 tenths new and thin lake ice along parts of the shore. Consolidated thin lake ice in sheltered bays.

February 4-15:

- 1-3 tenths new lake ice except 7-8 tenths new and thin lake ice along the shore. Consolidated thin and medium lake ice in sheltered bays.

North-western Lake Huron near the Straits of Mackinac.

January 15-22:

- Open water except 4-6 tenths new and thin lake ice along the shores. Consolidated thin and medium lake ice along parts of the northern shore.

January 23-February 6:

- 1-3 tenths new and thin lake ice except 7-8 tenths new and thin lake ice along the shores. Consolidated thin and medium lake ice along parts of the northern shore.

February 7-15:

- 1-3 tenths new and thin lake ice except 9-9+ tenths thin and medium lake ice along the shores. Consolidated medium lake ice along parts of the shores.

From north-western Lake Huron to Saginaw Bay.

January 15-20:

- Open water except 1-3 tenths new ice along the shore north of Alpena and 4-6 tenths new and thin lake ice along the shore south of Alpena.

January 21-February 2:

- Open water except 4-6 tenths new and thin lake ice along the shore north of Alpena and 9-9+ tenths new and thin lake ice along the shore south of Alpena.

February 3-15:

- 1-3 tenths new and thin lake ice except 7-8 tenths new and thin lake ice along the shore.

Saginaw Bay.

January 15-23:

- 9-9+ tenths new and thin lake ice except consolidated thin lake ice along the southern shore.

January 24-February 8:

- 9-9+ tenths thin and medium lake ice except consolidated thin and medium lake ice along the shore.

February 9-15:

- Consolidated medium lake ice.

The southern and eastern shore of Lake Huron.

January 15-19:

- Open water except 4-6 tenths new and thin ice along parts of the shore.

January 20-February 2:

- 1-3 tenths new and thin lake ice except 7-8 tenths new and thin lake ice along parts of the shore.

February 3-11:

- 7-8 tenths new and thin lake ice except 9-9+ tenths thin lake ice along parts of the shore.

February 12-15:

- 7-8 tenths thin lake ice except 9-9+ tenths thin and medium lake ice along parts of the shore.

Georgian Bay.

January 15-21:

- Open water except 4-6 tenths new and thin lake ice near the northern and eastern shores. Consolidated thin lake ice along parts of the northern and eastern shores.

January 22-February 2:

- Open water except 7-8 tenths new and thin lake ice in the northeastern section. Consolidated thin and medium lake ice along parts of the northern and eastern shores.

February 3-10:

- Open water except 9-9+ tenths thin lake ice in the northeastern section and 4-6 tenths new and thin lake ice in the southeastern section. Consolidated medium lake ice along the northern and eastern shores.

February 11-15:

- Open water except 9-9+ tenths thin lake ice in the northern section and 7-8 tenths thin lake ice in the southeastern section. Consolidated medium lake ice along the northern and eastern shores.

Elsewhere in Lake Huron.

January 15-February 15:

- Open water to ice free.

Lake Erie and Lake St. Clair

Near normal air temperatures were experienced over Lake Erie and Lake St. Clair from mid-December to mid-January. Air temperatures are forecast to be near to slightly below normal from mid-January to mid-February.

Lake St Clair and the Western Basin.

January 15-25:

- 9-9+ tenths new and thin lake ice except consolidated thin lake ice in Sandusky Bay and the eastern shore of Lake St. Clair.

January 26-February 5:

- 9-9+ tenths thin lake ice except consolidated thin lake ice along parts of the shore in Lake St. Clair and southwestern Lake Erie.

February 6-15:

- 9-9+ tenths thin and medium lake ice except consolidated medium lake ice along parts of the shore in Lake St. Clair and southwestern Lake Erie.

The rest of Lake Erie.

January 15-23:

- Open water except 1-3 tenths new and thin lake ice along the shore. Consolidated thin lake ice near Eriean and Long Point Bay.

January 24-February 3:

- Open water except 4-6 tenths new and thin ice along the shore. 7-8 tenths new and thin lake ice near the western basin. Consolidated thin lake ice near Eriean and Long Point Bay.

February 4-11:

- 4-6 tenths new and thin ice except 9-9+ tenths new and thin lake ice in the western section. Consolidated thin lake ice near Eriean and Long Point Bay.

February 12-15:

- 7-8 tenths new and thin ice except 9-9+ tenths thin lake ice in the western section. Consolidated thin and medium lake ice near Erieau and Long Point Bay.

Lake Ontario

Near normal air temperatures were experienced over Lake Ontario from mid-December to mid-January. Air temperatures are forecast to be near to slightly above normal from mid-January to mid-February.

Northeastern Lake Ontario.

January 15-24:

- Open water except 1-3 tenths new lake ice along parts of the shores. 9-9+ thin lake ice in sheltered bays.

January 25-February 5:

- Open water except 7-8 tenths new and thin lake ice along parts of the shore. Consolidated thin lake ice in sheltered bays.

February 6-15:

- 4-6 tenths new and thin lake ice except 9-9+ tenths new and thin lake ice along parts of the shore. Consolidated medium lake ice in sheltered bays.

Bay of Quinte.

January 15-26:

- Consolidated thin lake ice.

January 27-February 15:

- Consolidated medium lake ice.

St Lawrence River.

January 15-22:

- 1-3 tenths new and thin lake ice except consolidated thin lake ice in sheltered bays.

January 23-February 3:

- 7-8 tenths new and thin lake ice except consolidated thin lake ice in sheltered bays and along parts of the shores.

February 4-15:

- 7-8 tenths new and thin lake ice except consolidated thin and medium lake ice in sheltered bays and along parts of the shores.

Elsewhere in Lake Ontario.

January 15-February 1:

- Open water except 1-3 new and thin lake ice along parts of the shore in the southern and eastern sections.

February 2-15:

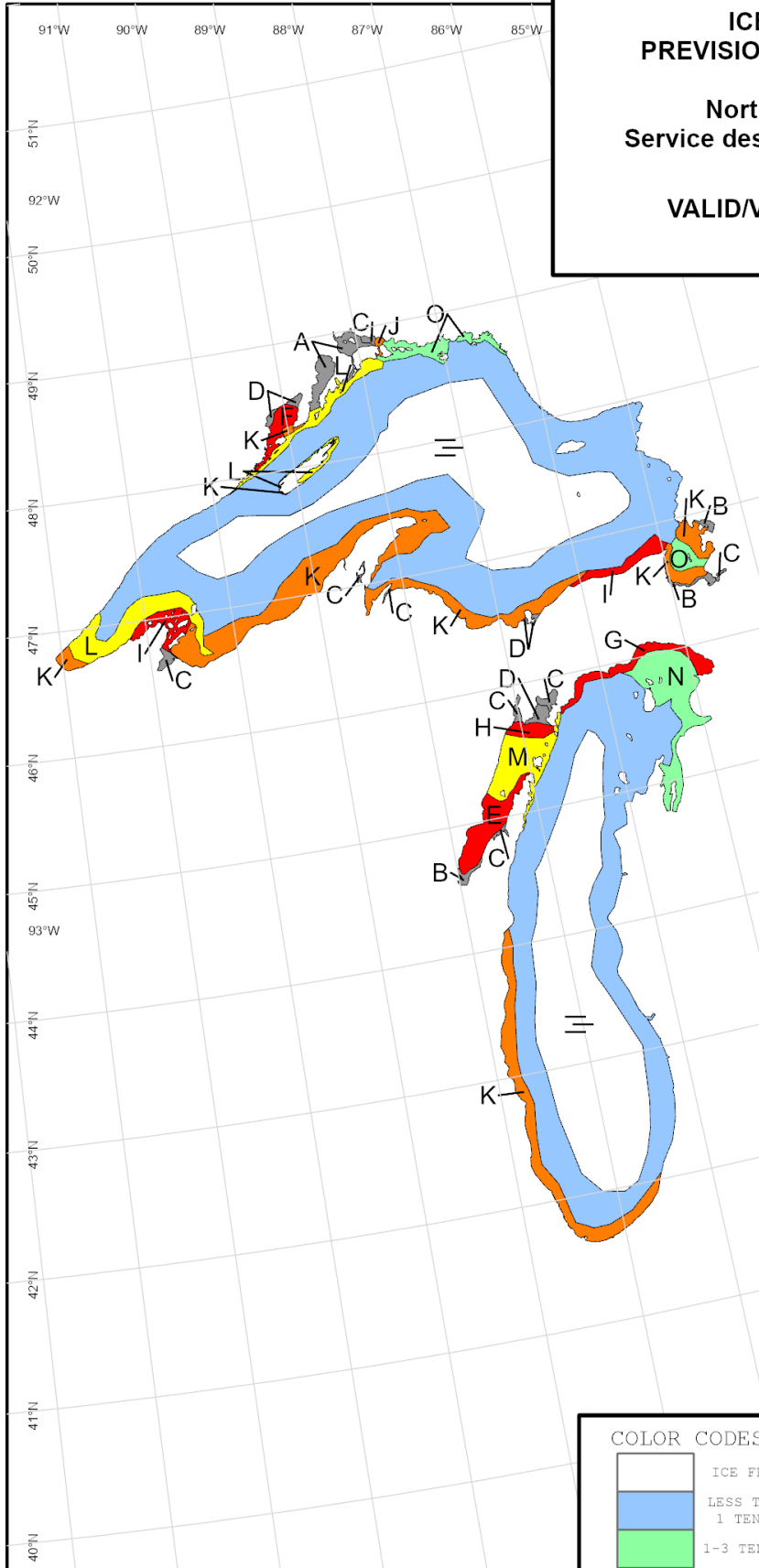
- Open water except 4-6 new and thin lake ice along parts of the shore in the southern and eastern sections.

END

**ICE FORECAST - 15 DAY
PREVISIONS DES GLACES - 15 JOURS**

**North American Ice Service /
Service des glaces de l'Amérique du Nord**

VALID/VALIDE: 01 FEB/FÉVR. 2025



A	10 7 8	B	10 5 4 8	C	10 5 8
D	10 4 8	E	9+ 5 4	F	9+ 4 1
G	9+ 4	H	8-10 5 4	I	8-10 4 1
J	6-8 5 4	K	6-8 4 1	L	4-6 4 1
M	4-6 4	N	1-3 4 1	O	1-3 1

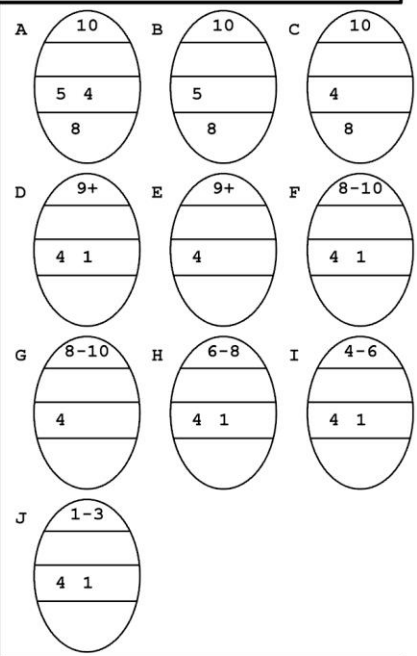
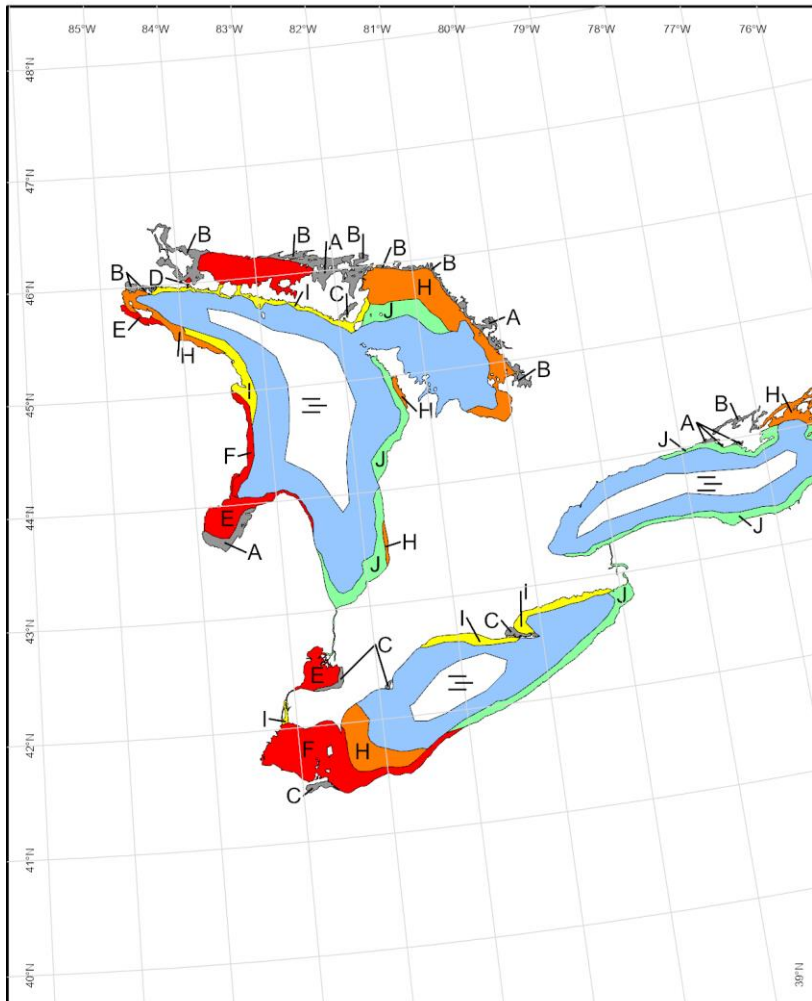
COLOR CODES BASED ON TOTAL CONCENTRATION

	ICE FREE		4-6 TENTHS		FAST ICE (TEN TENTHS)
	LESS THEN 1 TENTH		7-8 TENTHS		ICE SHELF
	1-3 TENTHS		9-10 TENTHS		UNDEFINED ICE

**ICE FORECAST - 15 DAY
PREVISIONS DES GLACES - 15 JOURS**

North American Ice Service /
Service des glaces de l'Amerique du Nord

VALID/VALIDE: 01 FEB/FÉVR. 2025



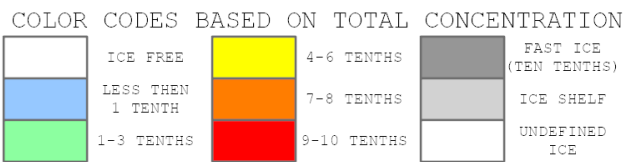
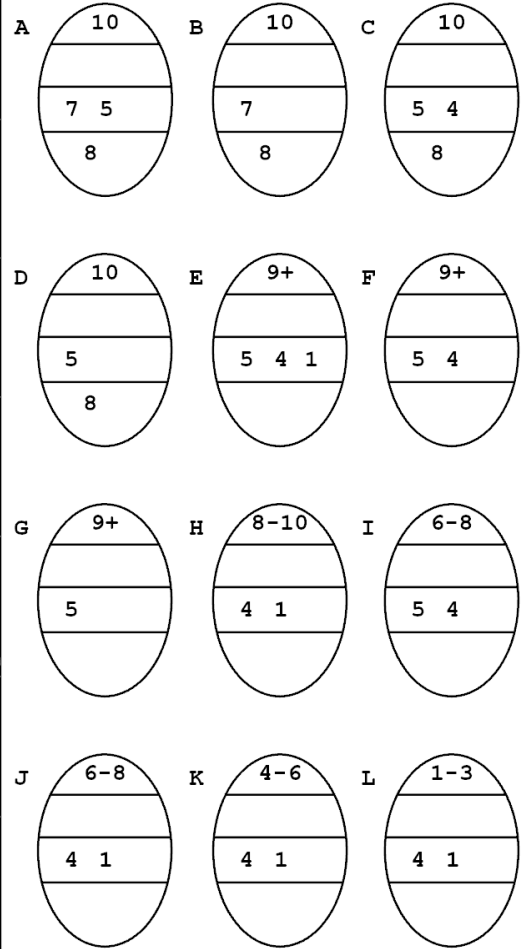
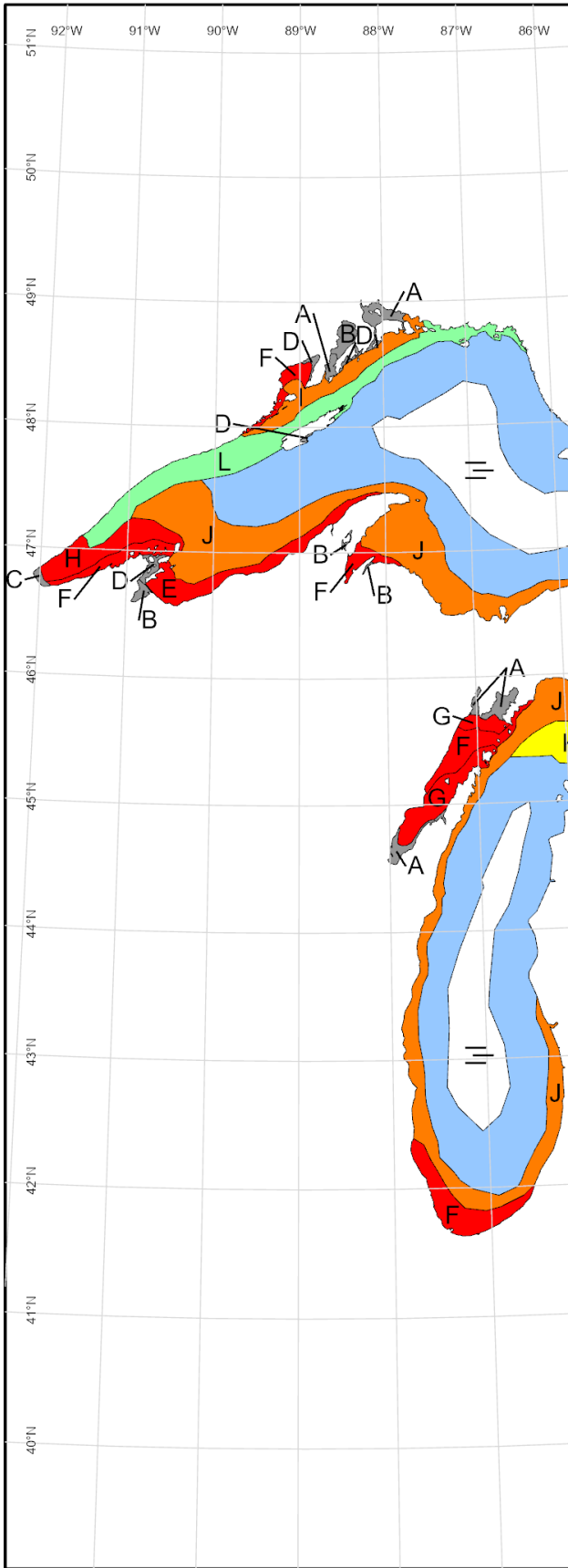
COLOR CODES BASED ON TOTAL CONCENTRATION

ICE FREE	4-6 TENTHS	FAST ICE (TEN TENTHS)
LESS THEN 1 TENTH	7-8 TENTHS	ICE SHELF
1-3 TENTHS	9-10 TENTHS	UNDEFINED ICE

**ICE FORECAST - 30 DAY
PREVISIONS DES GLACES - 30 JOURS**

**North American Ice Service /
Service des glaces de l'Amérique du Nord**

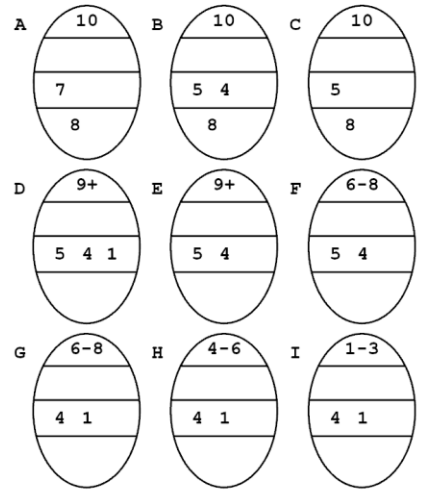
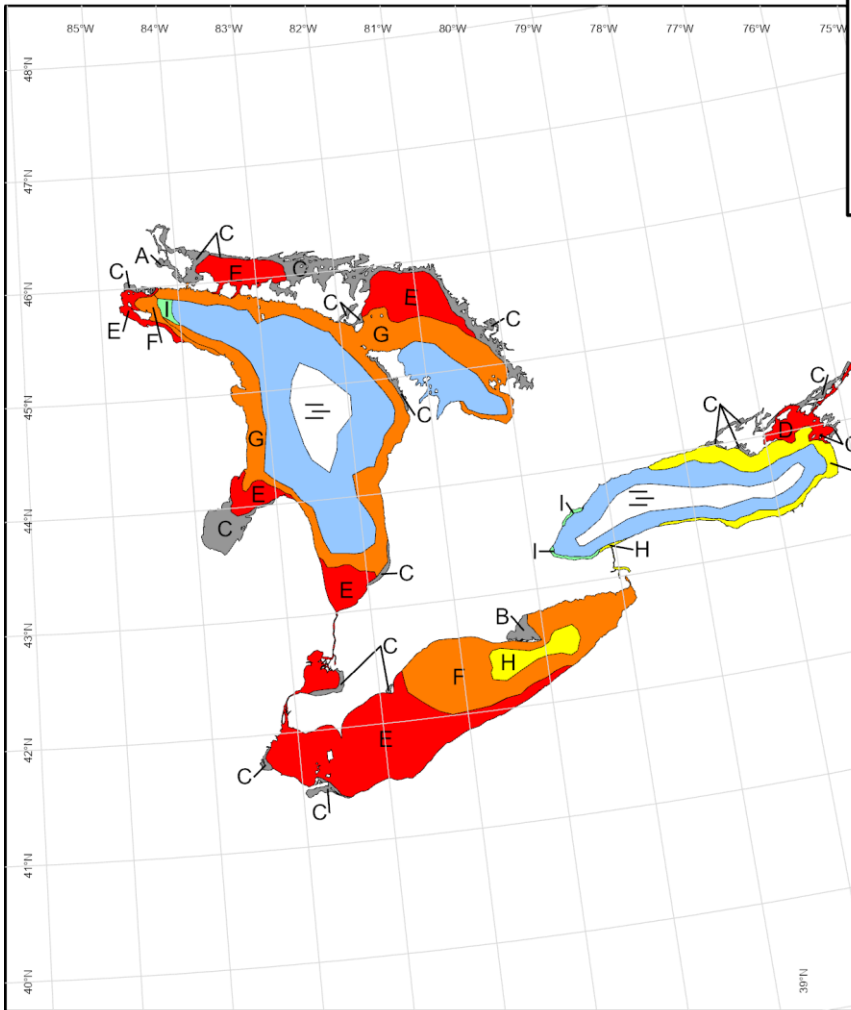
VALID/VALIDE: 15 FEB/FÉVR. 2025



**ICE FORECAST - 30 DAY
PREVISIONS DES GLACES - 30 JOURS**

**North American Ice Service /
Service des glaces de l'Amérique du Nord**

VALID/VALIDE: 15 FEB/FÉVR. 2025



COLOR CODES BASED ON TOTAL CONCENTRATION

