

# Seasonal Outlook Great Lakes

Winter 2025-2026



Issued by the North American Ice Service

1<sup>st</sup> December 2025

## **Lake Superior**

### **Winter temperature and ice forecasts.**

Below normal temperatures are forecast for December and January. Above normal temperatures forecast for February. Above normal ice conditions are forecast for Lake Superior.

### **Thunder Bay.**

#### **Outlook for December...**

December 1-9: Open water except 4-6 tenths new lake ice along parts of the shore in the northeastern section.

December 10-19: Open water except 7-8 tenths new and thin lake ice along parts of the shore.

December 20-31: Open water except 7-8 tenths thin lake ice along parts of the shore. 9-9+ tenths thin lake ice along the shore northeast of Caribou Island.

#### **Outlook for January...**

January 1-6: 1-3 tenths new and thin lake ice except 7-8 tenths thin lake ice along the shore. 9-9+ tenths thin lake ice along the shore northeast of Caribou Island.

January 7-12: 4-6 tenths new and thin lake ice except 7-8 tenths thin lake ice along the shore. 9-9+ tenths thin lake ice along the shore northeast of Caribou Island.

January 13-21: 7-8 tenths new and thin lake ice except 7-8 tenths thin and medium lake ice along parts of the shore. Consolidated medium lake ice along the shore northeast of Caribou Island.

January 22-31: 9-9+ tenths thin and medium lake ice. Consolidated medium lake ice along parts of the shore.

#### **Outlook for February...**

February 1-9: 9-9+ tenths thin and medium lake ice except consolidated medium lake ice in the eastern section. Consolidated medium lake ice along parts of the shore.

February 10-17: 9-9+ tenths thin and medium lake ice except consolidated medium lake ice in the eastern section. Consolidated medium lake ice along parts of the shore except consolidated thick lake ice along the shore in the northeastern section.

February 18-28: Consolidated medium lake ice except consolidated thick lake ice from Caribou Island north-eastwards.

### **Nipigon and Black Bays.**

#### **Outlook for December...**

December 1-8: 1-3 tenths new lake ice except 7-8 tenths thin lake ice in the northern Black Bay.

December 9-16: 4-6 tenths new lake ice except 7-8 tenths thin lake ice in Black Bay. Consolidated thin lake ice in northern Black Bay.

December 17-25: 9-9+ tenths thin lake ice except consolidated thin lake ice in north-western Nipigon Bay and consolidated medium lake ice in north-eastern Black Bay.

December 26-31: 9-9+ tenths thin lake ice except consolidated medium lake ice in north-western Nipigon Bay and north-eastern Black Bay.

Outlook for January...

January 1-10: 9-9+ tenths thin lake ice except consolidated medium lake ice in north-western Nipigon Bay and consolidated medium and thick lake ice north-eastern Black Bay.

January 11-20: Consolidated medium lake ice except consolidated thick lake ice in north-eastern Black Bay.

January 21-26: Consolidated medium and thick lake ice except consolidated thick lake ice in Black Bay.

January 27-31: Consolidated medium and thick lake ice except consolidated thick lake ice in Black Bay and in north-western Nipigon Bay.

Outlook for February...

February 1-28: Consolidated thick lake ice.

**From Grand Marais Minnesota to the entrance to Nipigon Bay.**

Outlook for December...

December 1-16: Open water except 1-3 tenths new and thin lake ice along parts of the shore.

December 17-31: Open water except 4-6 tenths new and thin lake ice along parts of the shore.

Outlook for January...

January 1-8: Open water except 7-8 tenths thin lake ice along parts of the shore.

January 9-17: Open water except 9-9+ tenths thin lake ice along parts of the shore.

January 18-31: Open water except 4-6 tenths thin lake ice along the shore. 9-9+ tenths thin and medium lake ice along parts of the shore.

Outlook for February...

February 1-5: Open water except 4-6 tenths thin lake ice along the shore. 9-9+ tenths thin and medium lake ice along parts of the shore.

February 6-11: Open water except 9-9+ tenths thin and medium lake ice near the entrance to Thunder and Black Bays and along parts of the shore.

February 12-19: 1-3 tenths thin lake ice except 7-8 tenths thin and medium lake ice between Isle Royale and the shore. 9-9+ tenths thin and medium lake ice near the entrance to Thunder and Black Bays and along parts of the shore.

February 20-28: 7-8 tenths thin and medium lake ice except 9-9+ tenths medium lake ice between Isle Royale and the shore. 9-9+ tenths thin and medium lake ice along parts of the shore.

**From Grand Marais to Duluth.**

Outlook for December...

December 1-31: Open water.

Outlook for January...

January 1-22: Open water except occasional 1-3 tenths new lake ice along parts of the shore.

January 25-31: Open water except 1-3 tenths new lake ice along parts of the shore.

Outlook for February...

February 1-9: Open water except 4-6 tenths new and thin lake ice along parts of the shore.

February 10-28: 7-8 tenths new and thin lake ice except 9-9+ tenths thin and medium lake ice near Duluth.

### **Southern Lake Superior west of Keweenaw Peninsula.**

#### Outlook for December...

December 1-12: Open water except 4-6 tenths new and thin lake ice in Chequamegon Bay. 9-9+ tenths thin lake ice along parts of the shore in Chequamegon Bay.

December 13-20: Open water except 1-3 tenths new ice along the shore and within the Apostle islands. 9-9+ tenths new and thin lake ice with consolidated thin lake ice along the shores in Chequamegon Bay.

December 21-31: Open water except 4-6 tenths new and thin lake ice along the parts of the shore. 7-8 tenths new and thin lake ice within the Apostle islands. Consolidated thin and medium lake ice in Chequamegon Bay.

#### Outlook for January...

January 1-10: Open water except 9 tenths thin lake ice along the shore and within the Apostle islands. Consolidated thin and medium lake ice in Chequamegon Bay.

January 11-19: 7-8 tenths new and thin lake ice except 9-9+ tenths thin lake ice along the shore and within the Apostle islands. Consolidated medium and thick lake ice in Chequamegon Bay.

January 20-31: 7-8 tenths thin lake ice except consolidated medium lake ice along parts of the shore and within the Apostle Islands. Consolidated thick lake ice in Chequamegon Bay.

#### Outlook for February...

February 1-18: 7-8 tenths thin and medium lake ice except consolidated medium lake ice along parts of the shore and within the Apostle Islands and consolidated thick lake ice in Chequamegon Bay.

February 19-28: 9 tenths thin and medium lake ice except consolidated medium lake ice along the shore and within the Apostle Islands. Consolidated thick lake ice in Chequamegon Bay.

### **Southern Lake Superior east of the Keweenaw Peninsula.**

#### Outlook for December...

December 1-14: Open water except 1-3 tenths new lake ice along the shore.

December 15-23: Open water except 1-3 tenths new lake ice along the shore. 4-6 tenths new and thin lake ice in sheltered bays.

December 15-23: Open water except 7-8 tenths new and thin lake ice along the shore. 9-9+ tenths thin lake ice in sheltered bays.

#### Outlook for January...

January 1-20: Open water except 7-8 tenths new and thin lake ice along the shore. Consolidated thin lake ice in sheltered bays.

January 21-31: 1-3 tenths new lake ice except 7-8 tenths thin lake ice within 40 nautical miles of the shore. Consolidated thin and medium lake ice in sheltered bays.

#### Outlook for February...

February 1-7: 1-3 tenths new and thin lake ice except 7-8 tenths thin lake ice within 40 nautical miles of the shore. Consolidated thin and medium lake ice in sheltered bays.

February 8-15: 1-3 tenths new and thin lake ice except 9 tenths thin lake ice within 40 nautical miles of the shore. Consolidated medium lake ice in sheltered bays.

February 16-28: 7-8 tenths thin lake ice except 9 tenths thin and medium lake ice within 40 nautical miles of the shore. Consolidated medium lake ice in sheltered bays.

**Whitefish Bay.**

Outlook for December...

December 1-8: Open water 4-6 tenths new and thin lake ice along parts of the shore.

December 9-21: Open water except 7-8 tenths thin lake ice along the shore.

December 22-31: 1-3 tenths new lake ice except 7-8 tenths thin lake ice along the shore. Consolidated thin lake ice along parts of the shore and in bays.

Outlook for January...

January 1-10: 1-3 tenths new lake ice except 9-9+ tenths thin lake ice along the shore. Consolidated thin and medium lake ice along parts of the shore and in bays.

January 11-23: 4-6 tenths thin lake ice except consolidated thin and medium lake ice along parts of the shore and in bays.

January 24-31: 7-8 tenths thin lake ice except consolidated thin and medium lake ice along parts of the shore and consolidated medium lake ice in bays.

Outlook for February...

February 1-9: 9 tenths thin and medium lake ice except consolidated medium lake ice along parts of the shore and consolidated thick lake ice in Goulais Bay east to Sault Ste. Marie.

February 10-18: 9-9+ tenths medium lake ice except consolidated medium lake ice along parts of the shore and consolidated thick lake ice in Goulais Bay east to Sault Ste. Marie.

February 19-28: Consolidated medium lake ice except consolidated thick lake ice in bays and along parts of the shore.

**From Whitefish Bay northwards to Michipicoten Bay.**

Outlook for December...

December 1-31: Open water.

Outlook for January...

January 1-16: Open water.

January 17-31: Open water except 1-3 tenths new and thin lake ice along parts of the shore.

Outlook for February...

February 1-7: Open water except 7-8 tenths new and thin lake ice along the shore south of Gargantua.

February 8-15: Open water except 7-8 tenths new and thin lake ice within 60 nautical miles of the shore south of Gargantua. 9-9+ tenths medium lake ice along parts of the shore south of Gargantua.

February 16-22: 9-9+ tenths thin lake ice except 9-9+ tenths thin and medium lake ice along parts of the shore.

February 23-28: 9-9+ tenths thin lake ice except 9-9+ tenths thin and medium lake ice along the shore.

**From Michipicoten Bay to the entrance to Nipigon Bay.**

Outlook for December...

December 1-31: Open water.

Outlook for January...

January 1-10: Open water.

January 11-31: Open water except 4-6 tenths new and thin lake ice along parts of the shore west of Marathon.

Outlook for February...

February 1-14: Open water except 4-6 tenths new and thin lake ice along the shore west of Marathon.

February 15-28: Open water except 7-8 tenths new and thin lake ice along parts of the shore west of Marathon.

**Elsewhere in Lake Superior.**

Outlook for December...

December 1-31: Ice free.

Outlook for January...

January 1-31: Ice free to open water.

Outlook for February...

February 1-10: Ice free to open water.

February 11-28: Open water except 7-8 tenths thin lake ice south of Isle Royale and 1-3 tenths thin lake ice in the south-eastern section.

**Lake Michigan.**

**Winter temperature and ice forecasts.**

Below normal temperatures are forecast for December and January. Normal to slightly above normal temperatures are forecast for February. Near normal ice conditions are forecast for Lake Michigan.

**Green Bay.**

Outlook for December...

December 1-5: Open water except 4-6 tenths new and thin lake ice along the shores in the Bays de Noc and south of Oconto.

December 6-13: Open water except 4-6 tenths new and thin lake ice in the Bays de Noc and south of Marinette. 9-9+ tenths new and thin lake ice along the shores in the Bays de Noc and south of Oconto.

December 14-20: Open water except 7-8 tenths thin lake ice in the Bays de Noc and the extreme southern section. 4-6 tenths new and thin ice along the shores except consolidated thin ice near Green Bay and in the northern Bays de Noc.

December 21-31: 1-3 tenths thin lake ice except 7-8 tenths thin lake ice in the southern section. Consolidated thin lake ice in the Bays de Noc and along the shore from near Green Bay north-eastwards to Sturgeon Bay.

Outlook for January...

January 1-9: 1-3 tenths thin lake ice except 9-9+ tenths thin lake ice in the Bays de Noc and south of Marinette. Consolidated thin lake ice along the shore in the Bays de Noc and in the extreme south-eastern section.

January 10-17: 7-8 tenths thin lake ice except 9-9+ tenths thin lake ice in the southern and extreme northern sections. Consolidated thin and medium lake ice in the northern Bays de Noc and in the extreme southern section.

January 18-26: 9-9+ tenths thin and medium lake ice except consolidated medium lake ice in the Bays de Noc and in the extreme southeastern section.

January 27-31: 9-9+ tenths medium lake ice except consolidated medium lake ice in the Bays de Noc and in the southern section.

Outlook for February...

February 1-14: 9-9+ tenths medium lake ice except consolidated medium and thick lake ice in the Bays de Noc and in the southern section.

February 15-28: Consolidated medium and thick lake ice.

### **Northeastern Lake Michigan.**

Outlook for December...

December 1-14: Open water.

December 15-25: Open water except 7-8 tenths new and thin lake ice along the northern shore and along the shores near the Straits of Mackinac.

Outlook for January...

January 1-9: Open water except 7-8 tenths thin lake ice along the northern shore. 1-3 tenths thin lake ice north-east of Beaver Island to the Straits of Mackinac. Consolidated thin lake ice along parts of the northern shore.

January 10-19: Open water except 9-9+ tenths thin lake ice north-east of Beaver Island. Consolidated thin lake ice along the northern shore.

January 20-31: Open water except 9-9+ tenths thin and medium lake ice north-east of Beaver Island. Consolidated medium lake ice in the extreme north-eastern section. 7-8 tenths thin lake ice along the shores in the north-western section and 4-6 tenths new and thin lake ice along the shores in the south-eastern section.

Outlook for February...

February 1-7: Open water except 9-9+ tenths medium lake ice north-east of Beaver Island. Consolidated medium lake ice in the extreme north-eastern section. 7-8 tenths thin lake ice along the shore in the north-western section and 4-6 tenths new and thin lake ice along the shores in the south-eastern section.

February 8-16: 1-3 tenths thin lake ice except 9-9+ tenths medium lake ice north and east of Beaver Island. Consolidated medium lake ice in the extreme north-eastern section. 7-8 tenths new and thin lake ice along the shore in the north-western section and 4-6 tenths new and thin lake ice in Grand Traverse Bay.

February 17-28: 4-6 tenths thin and medium lake ice except consolidated medium and thick lake ice north-east of Beaver Island.

### **Elsewhere in Lake Michigan.**

Outlook for December...

December 1-31: Ice free except open water north of Manitowoc.

Outlook for January...

January 1-12: Open water except 7-8 tenths new lake ice along parts of the western and southern shores.

January 13-20: Open water except 7-8 tenths new and thin lake ice along parts of the southern and western shores.

January 21-31: Open water except 7-8 tenths new and thin lake ice along parts of the shore. 9-9+ tenths thin and medium lake ice along parts of the shore in the southwestern section.

Outlook for February...

February 1-14: Open water except 7-8 tenths thin lake ice along parts of the shores. 9-9+ tenths thin and medium lake ice along parts of the shore in the southwestern section.

February 15-28: Open water except 9 tenths thin lake ice along parts of the shore. 9-9+ tenths thin and medium lake ice along the shore in the southwestern section.

**Lake Huron and Georgian Bay.**

**Winter temperature and ice forecasts.**

Below normal temperatures are forecast for December and January. Above normal temperatures forecast for February. Near normal ice conditions are forecast for Lake Huron and Georgian Bay.

**North Channel.**

Outlook for December...

December 1-9: Open water except 1-3 tenths new lake ice along parts of the northern coast.

December 10-20: Open water except 7-8 tenths new and thin lake ice along parts of the northern shore.

December 21-28: Open water except 9-9+ tenths new and thin lake ice along parts of the shore. Consolidated thin lake ice in sheltered bays and along the shore in the extreme western section.

December 29-31: Open water except 9-9+ tenths thin lake ice along the northern and western shores. Consolidated thin lake ice along parts of the shore.

Outlook for January...

January 1-5: 1-3 tenths new ice except 9-9+ tenths thin lake ice along the northern and western shores. Consolidated thin lake ice along parts of the shore.

January 6-12: 9-9+ tenths thin lake ice except consolidated thin lake ice along parts of the shore.

January 13-19: 9-9+ tenths thin and medium lake ice except consolidated thin lake ice along parts of the shore and in the extreme eastern and extreme western sections.

January 20-27: 9-9+ tenths medium lake ice except consolidated medium lake ice along the shore and in the eastern and extreme western sections.

January 28-31: 9-9+ Consolidated medium lake ice except consolidated medium and thick lake ice in the extreme western section.

Outlook for February...

February 1-7: 9-9+ Consolidated medium lake ice except consolidated medium and thick lake ice in the extreme western section.

February 8-13: Consolidated medium and thick lake ice.

February 14-20: Consolidated medium and thick lake ice except consolidated thick lake ice in the extreme western section and along parts of the shore.

February 21-28: Consolidated thick lake ice.



**St Mary's River.**

Outlook for December...

December 1-6: 1-3 new lake ice.

December 7-14: 7-8 tenths thin lake ice.

December 15-21: 7-8 tenths thin lake ice except consolidated thin lake ice along parts of the shore.

December 22-31: 7-8 tenths thin lake ice except consolidated thin lake ice along parts of the shore and in Lake George.

Outlook for January...

January 1-3: 9 tenths thin lake ice except consolidated thin lake ice along parts of the shore and in Lake George.

January 4-10: 9-9+ tenths thin and medium lake ice except consolidated thin lake ice along the shore and in Lake George.

January 11-31: Consolidated medium lake ice.

Outlook for February...

February 1-12: Consolidated medium and thick lake ice.

February 13-28: Consolidated thick lake ice.

**South of Manitoulin Island westward to north-western Lake Huron.**

Outlook for December...

December 1-22: Open water.

December 23-31: Open water except 1-3 tenths new lake ice in sheltered bays and along the shore west of Drummond Island.

Outlook for January...

January 1-12: Open water except 4-6 tenths new and thin lake ice in sheltered bays and along the shore west of Drummond Island. 9-9+ tenths thin lake ice in sheltered bays.

January 13-20: Open water except 4-6 tenths new and thin lake ice along the shore. Consolidated thin lake ice in sheltered bays.

January 21-31: Open water except 7-8 tenths new and thin lake ice along the shore. Consolidated thin and medium lake ice in sheltered bays.

Outlook for February...

February 1-7: 9-9+ tenths new and thin lake ice except consolidated medium lake ice in sheltered bays.

February 8-16: 9-9+ tenths new and thin lake ice except consolidated medium and thick lake ice in sheltered bays.

February 17-28: 9-9+ tenths new and thin lake ice except consolidated thick lake ice in sheltered bays

**North-western Lake Huron near the Straits of Mackinac.**

Outlook for December...

December 1-7: Open water except 1-3 tenths new lake ice in bays along the northern shore.

December 8-17: Open water except 7-8 tenths thin lake ice in bays along the northern shore. Consolidated thin lake ice in sheltered bays along the north shore.

December 18-31: Open water except 4-6 tenths thin lake ice along the south shore and 9-9+ tenths thin ice along the north shore. Consolidated thin lake ice in sheltered bays along the north shore.

Outlook for January...

Seasonal Outlook - Great Lakes - Winter 2025-2026

January 1-9: 4-6 tenths new and thin lake ice except consolidated thin lake ice along parts of the northern shore.

January 10-19: 4-6 tenths new and thin lake ice except 9-9+ tenths thin lake ice along the north shore. Consolidated thin and medium lake ice along parts of the northern shore.

January 20-31: 7-8 tenths thin and medium lake ice except consolidated thin and medium lake ice along parts of the shore.

Outlook for February...

February 1-11: 9-9+ tenths thin and medium lake ice except consolidated medium lake ice along parts of the shore

February 12-23: 9-9+ tenths thin and medium lake ice except consolidated medium and thick lake ice along parts of the shore and in the Straits of Mackinac.

**From north-western Lake Huron to Saginaw Bay.**

Outlook for December...

December 1-12: Open water.

December 13-23: Open water except 1-3 tenths new ice along the shore near Alpena.

December 24-31: Open water except 4-6 tenths new lake ice along parts of the shore. 7-8 tenths new and thin lake ice along the shore near Alpena.

Outlook for January...

January 1-7: Open water except 4-6 tenths new lake ice along parts of the shore. 7-8 tenths new and thin lake ice along the shore near Alpena.

January 8-19: Open water except 7-8 tenths new and thin lake ice along the shore.

January 20-31: Open water except 9-9+ tenths new and thin lake ice along the shore. Consolidated thin lake ice along the shore near Alpena.

Outlook for February...

February 1-10: 7-8 tenths new and thin lake ice except consolidated thin lake ice along the shore near Alpena.

February 11-17: 7-8 tenths thin lake ice along the shore except 7-8 tenths thin and medium lake ice south of Alpena. Consolidated thin and medium lake ice in sheltered bays.

February 18-28: 9-9+ tenths thin and medium lake ice except consolidated medium lake ice in sheltered bays.

**Saginaw Bay.**

Outlook for December...

December 1-6: Open water except 4-6 tenths new and thin lake ice along parts of the shore.

December 7-14: 4-6 tenths new ice except 9-9+ tenths thin lake ice along the eastern shore.

December 15-21: 7-8 tenths thin lake ice except 9-9+ tenths thin lake ice in along the shore. Consolidated thin lake ice along the south-eastern shore.

December 22-31: 9-9+ tenths thin lake ice except consolidated thin lake ice along the shore.

Outlook for January...

January 1-10: 9-9+ tenths thin and medium lake ice except consolidated thin and medium lake ice along the shore.

January 11-20: 9-9+ tenths thin and medium lake ice except consolidated thin and medium lake ice in the south-eastern section.

January 21-31: 9-9+ tenths thin and medium lake ice except consolidated medium lake ice in the southern section.

Outlook for February...

February 1-12: 9-9+ tenths thin and medium lake ice except consolidated medium and thick lake ice in the southern section.

February 13-28: 9-9+ Consolidated medium and thick lake ice.

### **The southern and eastern shore of Lake Huron.**

Outlook for December...

December 1-15: Open water.

December 16-23: Open water except 7-8 tenths new and thin lake ice along the shore north of Port Elgin and 4-6 tenths new lake ice along the shore in the north-western section.

December 24-31: Open water except 4-6 tenths new lake ice along parts of the shore. 9-9+ tenths thin lake ice along the shore north of Port Elgin.

Outlook for January...

January 1-8: Open water except 9-9+ tenths new and thin lake ice along the shore. Consolidated thin lake ice along parts of the shore north of Port Elgin.

January 9-14: Open water except 9-9+ tenths new and thin lake ice along the shore. Consolidated thin and medium lake ice along parts of the Bruce Peninsula.

January 15-25: 7-8 tenths new and thin lake ice except 9-9+ tenths thin lake ice along the shore. Consolidated thin lake ice along parts of the shore and consolidated medium lake ice along the eastern shore.

Outlook for February...

February 1-9: 7-8 tenths new and thin lake ice except 9-9+ tenths thin and medium lake ice along the southern and eastern shores. Consolidated medium lake ice along parts of the shore.

February 10-18: 9-9+ tenths thin lake ice except 7-8 tenths thin and medium lake ice north of Port Elgin. Consolidated medium lake ice along the southern and eastern shores.

February 19-28: 9-9+ tenths thin and medium lake ice. Consolidated medium and thick lake ice along the southern and eastern shores.

### **Georgian Bay.**

Outlook for December...

December 1-10: Open water except 1-3 tenths new ice along the northern and eastern shores.

December 11-20: Open water except 4-6 tenths new and thin lake ice along the northern and eastern shores.

December 21-31: Open water except 7-8 tenths new and thin lake ice near the shore in the northern and eastern sections. Consolidated thin lake ice along parts of the northern and eastern shores.

Outlook for January...

January 1-12: Open water except 1-3 tenths new lake ice along the southern shore and except 7-8 tenths new and thin lake ice near the shore in the northern

and eastern sections. Consolidated thin lake ice along parts of the northern and eastern shores.

January 13-21: Open water except 4-6 tenths new lake ice along the southern shore and except 9-9+ tenths new and thin lake ice near the shore in the northern and eastern sections. Consolidated thin and medium lake ice along parts of the northern and eastern shores.

January 22-31: Open water except 4-6 tenths new and thin lake ice along the shore. 9-9+ tenths thin lake ice near the shore in the northern and eastern sections. Consolidated medium lake ice along the northern and eastern shores.

Outlook for February...

February 1-14: 4-6 tenths new and thin lake ice except 9-9+ tenths thin and medium lake ice in the northern and north-eastern sections. Consolidated medium and thick lake ice along the northern and north-eastern shores.

February 15-28: 7-8 tenths thin and medium lake ice except 9-9+ tenths thin and medium lake ice in the northern and north-eastern sections. Consolidated thick lake ice along the northern and north-eastern shores.

### **Elsewhere in Lake Huron.**

Outlook for December...

December 1-31: Ice free.

Outlook for January...

January 1-17: Ice free.

January 18-31: Open water except ice free in central Lake Huron.

Outlook for February...

February 1-15: Open water except 4-6 tenths new and thin lake ice between Tobermory and Manitoulin Island.

February 16-28: Open water except 7-8 tenths thin and medium lake ice between Tobermory and Manitoulin Island.

## **Lake Erie and Lake St. Clair**

### **Winter temperature and ice forecasts.**

Below normal temperatures are forecast for December, normal temperatures are forecast for January, and above normal temperatures forecast for February. Near normal ice conditions are forecast for Lake Erie and Lake St Clair.

### **Lake St Clair and the Western Basin.**

Outlook for December...

December 1-12: Open water except 4-6 tenths new lake ice along the eastern shore of Lake St Clair and the south-western section of the Western Basin.

December 13-31: Open water except 4-6 tenths new lake ice in Lake St Clair and in western and southern parts of the Western Basin. 9-9+ tenths thin lake ice along the eastern shore of Lake St Clair and in Sandusky Bay.

Outlook for January...

January 1-10: 9-9+ tenths new and thin lake ice except consolidated thin lake ice along the southern and eastern shores of Lake St Clair and in Sandusky Bay.

January 11-16: 9-9+ tenths thin lake ice except consolidated thin lake ice in Lake St Clair and in Sandusky Bay and along parts of the western shore of the Western Basin.

January 17-25: 9-9+ tenths thin and medium lake ice except consolidated thin lake ice in Lake St Clair and along parts of the western shore of the Western Basin. Consolidated medium lake ice in Sandusky Bay.

January 26-31: 9-9+ medium lake ice except consolidated medium lake ice in Lake St Clair and in Sandusky Bay.

Outlook for February...

February 1-17: 9-9+ medium lake ice except consolidated medium lake ice in Lake St Clair and in Sandusky Bay and along the western shore of the Western Basin.

February 18-28: 9-9+ medium and thick lake ice except consolidated thick lake ice in Lake St Clair and in Sandusky Bay and along the southern and western shore of the Western Basin.

### **The rest of Lake Erie.**

Outlook for December...

December 1-14: Open water.

December 15-31: Open water except 7-8 tenths new and thin lake ice along the eastern shore of Long Point.

Outlook for January...

January 1-9: Open water except 4-6 tenths new lake along parts of the shore. 9-9+ tenths thin lake ice along the eastern shore of Long Point.

January 10-19: Open water except 9-9+ tenths new and thin lake along the shore and in the extreme western section. Consolidated thin lake ice along the eastern shore of Long Point.

January 20-31: 7-8 tenths thin lake ice except 9-9+ tenths thin lake along the shore. 9-9+ tenths thin and medium lake ice in the extreme western section and along parts of the shore.

Outlook for February...

February 1-28: 9-9+ tenths medium lake ice except consolidated medium and thick lake ice along the southern and eastern shores.

## **Lake Ontario.**

### **Winter temperature and ice forecasts.**

Below normal temperatures are forecast for December, normal temperatures are forecast for January, and above normal temperatures forecast for February. Slightly below normal ice conditions are forecast for Lake Ontario.

### **Northeastern Lake Ontario.**

Outlook for December...

December 1-19: Open water except 4-6 tenths new and thin lake ice in sheltered bays in the north-eastern section.

December 20-31: Open water except 9-9+ tenths thin lake ice along parts of the shore in the north-eastern section.

Outlook for January...

January 1-12: Open water except 7-8 tenths new and thin lake ice along parts of the shore in the north-eastern section. Consolidated thin lake ice in sheltered bays in the north-eastern section.

January 13-31: Open water except 4-6 tenths new and thin lake ice in the north-eastern section and along the southern shore. Consolidated thin and medium lake ice in sheltered bays in the north-eastern section.

Outlook for February...

February 1-28: Open water except 9-9+ tenths thin and medium lake ice in the north-eastern section. 1-3 tenths thin lake ice along the southern shore.

Consolidated medium lake ice east of Kingston and in sheltered bays in the north-eastern section.

### **Bay of Quinte.**

Outlook for December...

December 1-8: Open water except 4-6 tenths new and thin lake ice in sheltered bays.

December 9-17: 7-8 tenths new lake ice except 9-9+ tenths thin lake ice along parts of the shore.

December 18-31: 9-9+ thin lake ice.

Outlook for January...

January 1-15: Consolidated thin lake ice.

January 16-31: Consolidated medium lake ice.

Outlook for February...

February 1-8: Consolidated medium lake ice.

February 9-28: Consolidated thick lake ice.

### **Elsewhere in Lake Ontario.**

Outlook for December...

December 1-31: Open water.

Outlook for January...

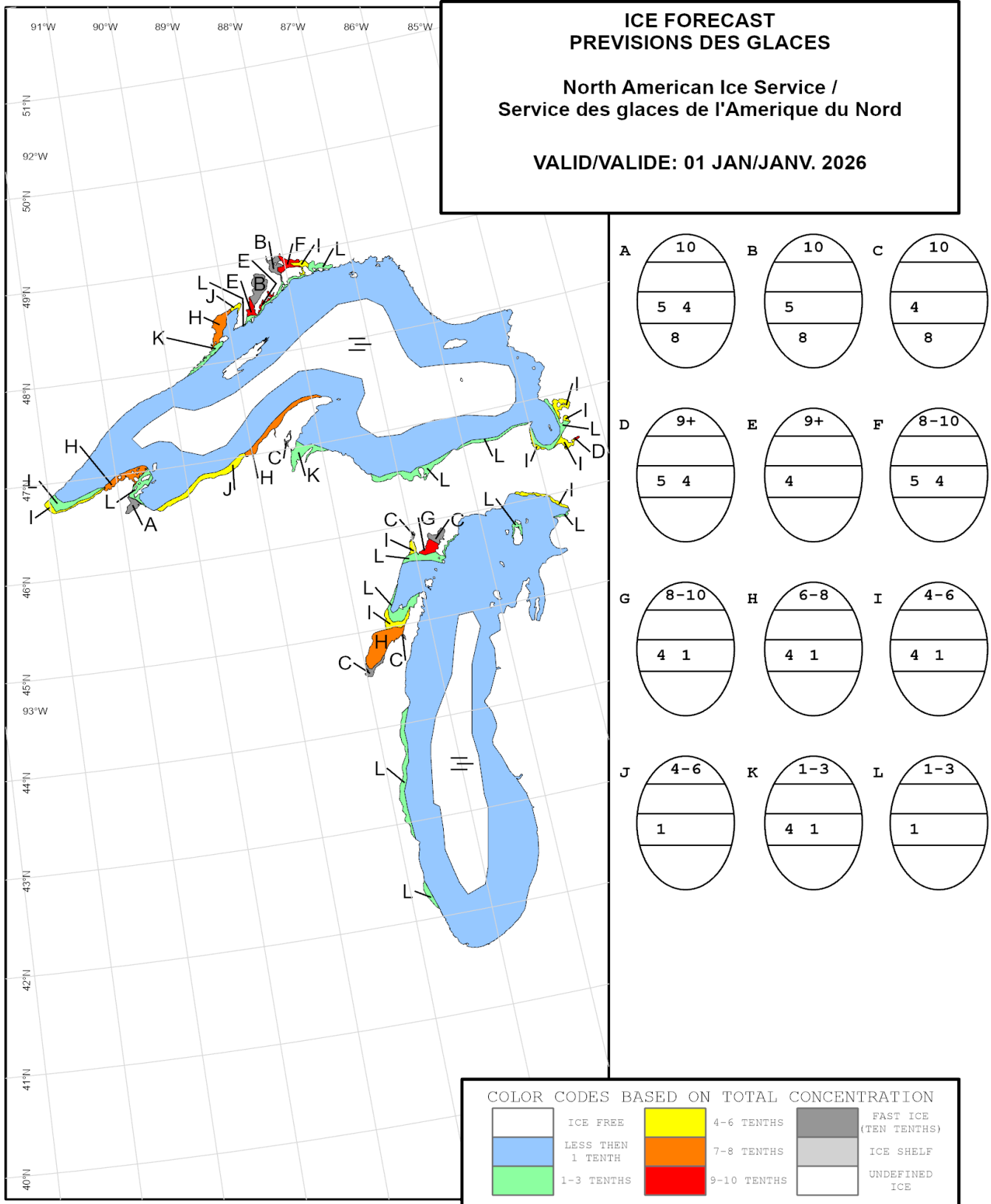
January 1-12: Open water except 1-3 tenths thin lake ice along the shore in the southern section and east of Cobourg.

January 13-31: Open water except 1-3 tenths thin lake ice along the shore east of Cobourg and 7-8 tenths new and thin lake ice along the shore in the southern section.

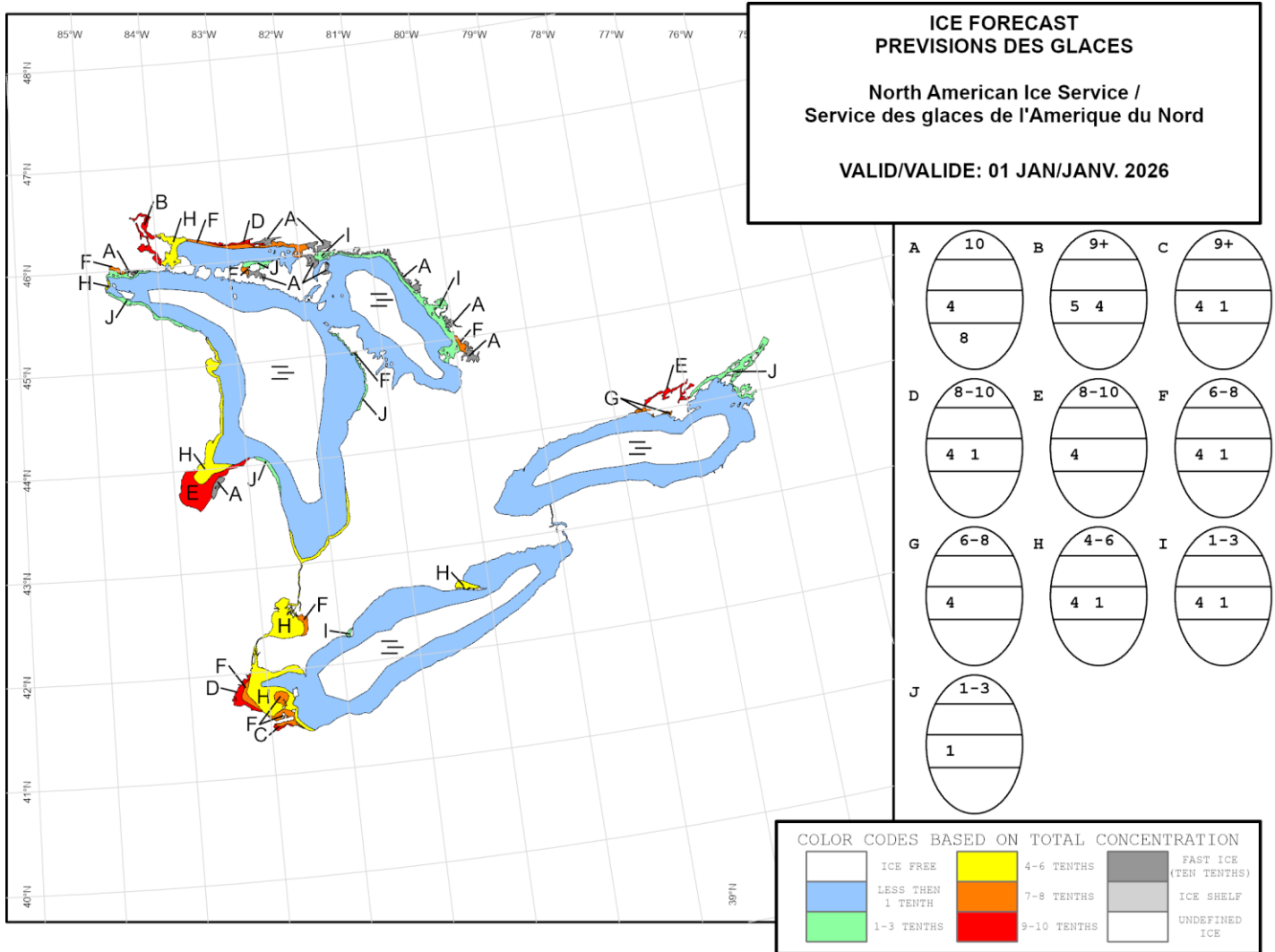
Outlook for February...

February 1-19: Open water except 7-8 tenths thin lake ice along the shore in the southern section and east of Cobourg. Consolidated thin and medium lake ice in sheltered bays east of Cobourg.

February 20-28: Open water except 7-8 tenths thin lake ice along the shore in the southern section. Consolidated medium lake ice along the shore east of Cobourg.



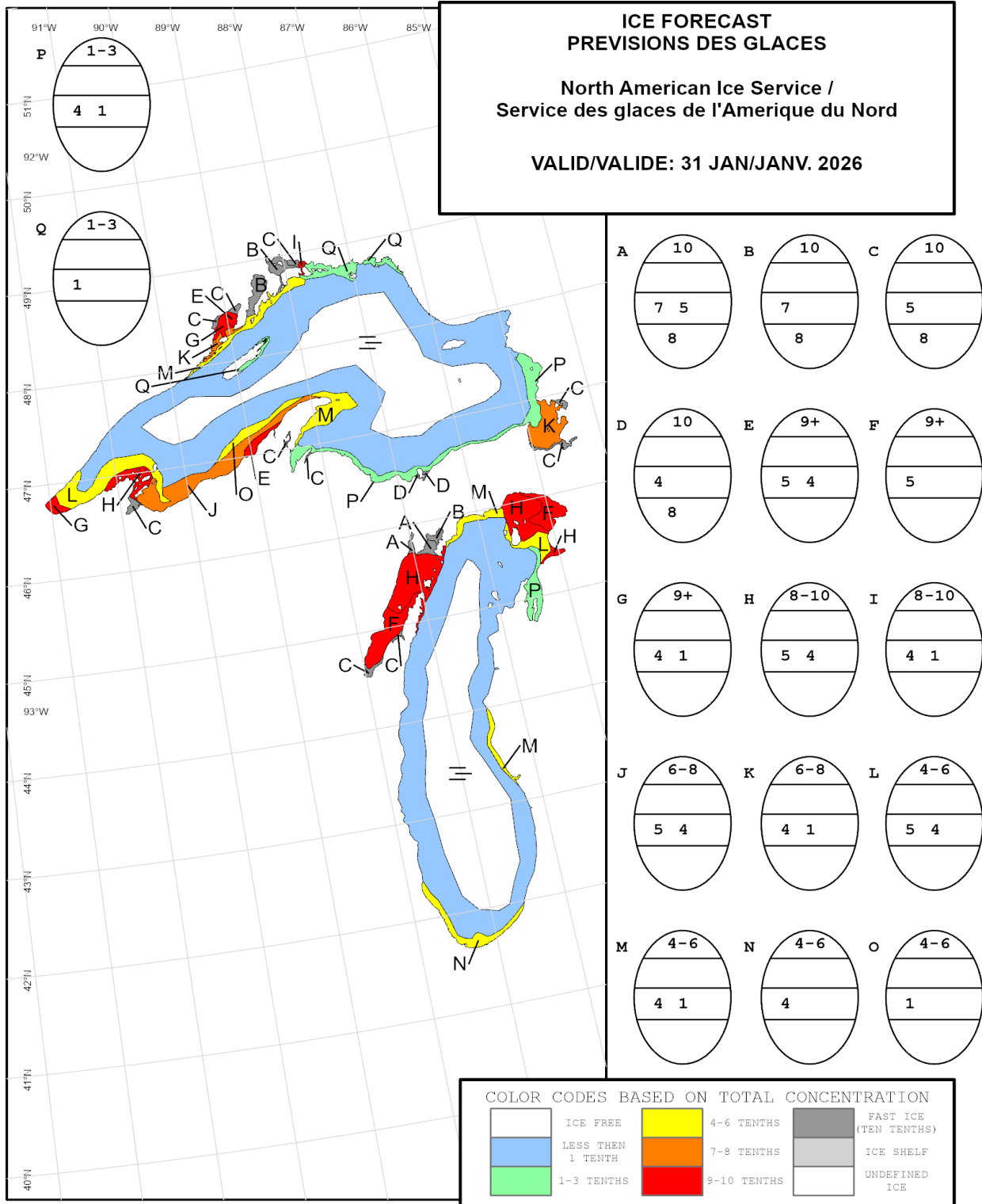
Seasonal Outlook - Great Lakes - Winter 2025-2026



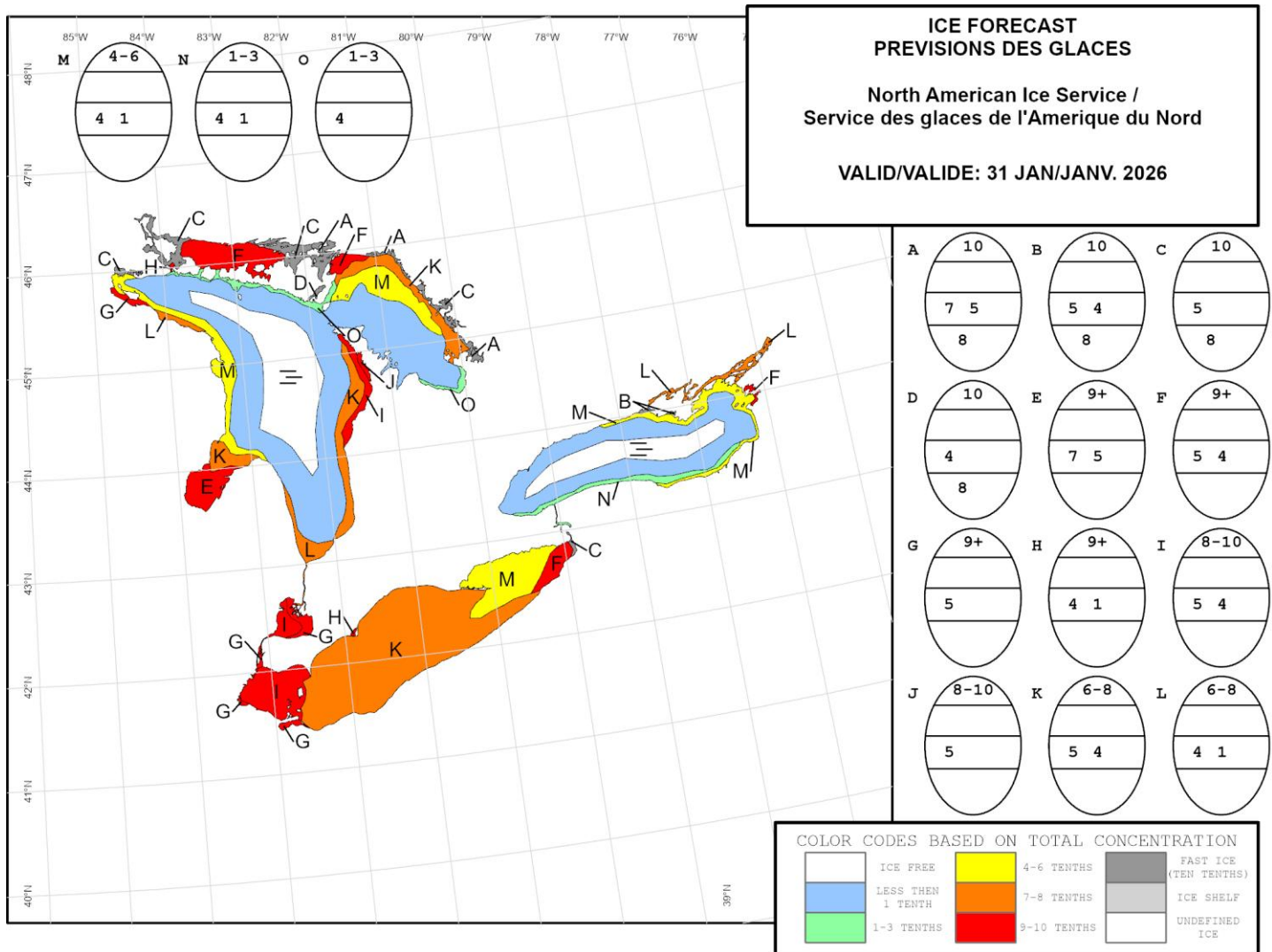
Seasonal Outlook - Great Lakes - Winter 2025-2026



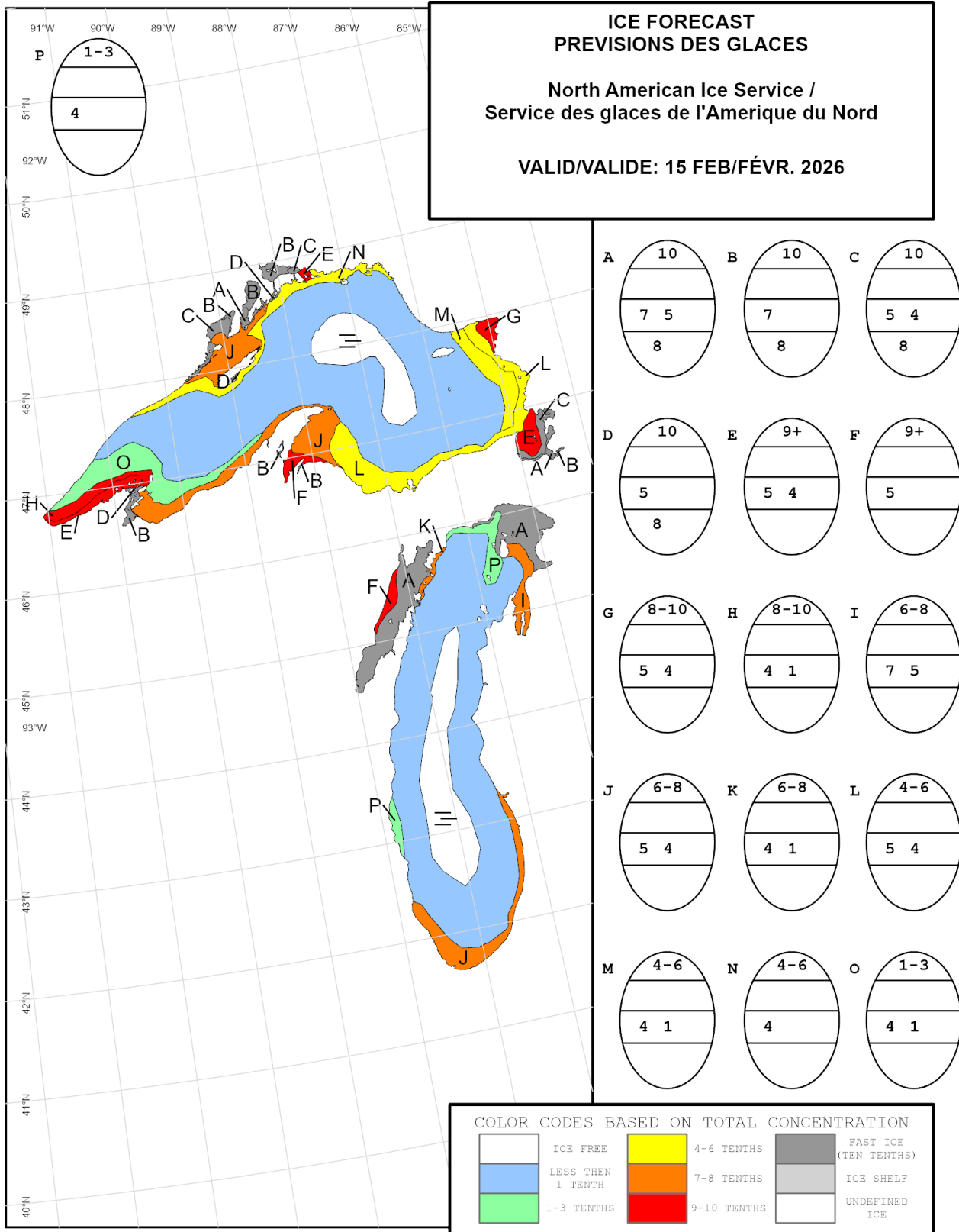
# North American Ice Service



Seasonal Outlook - Great Lakes - Winter 2025-2026

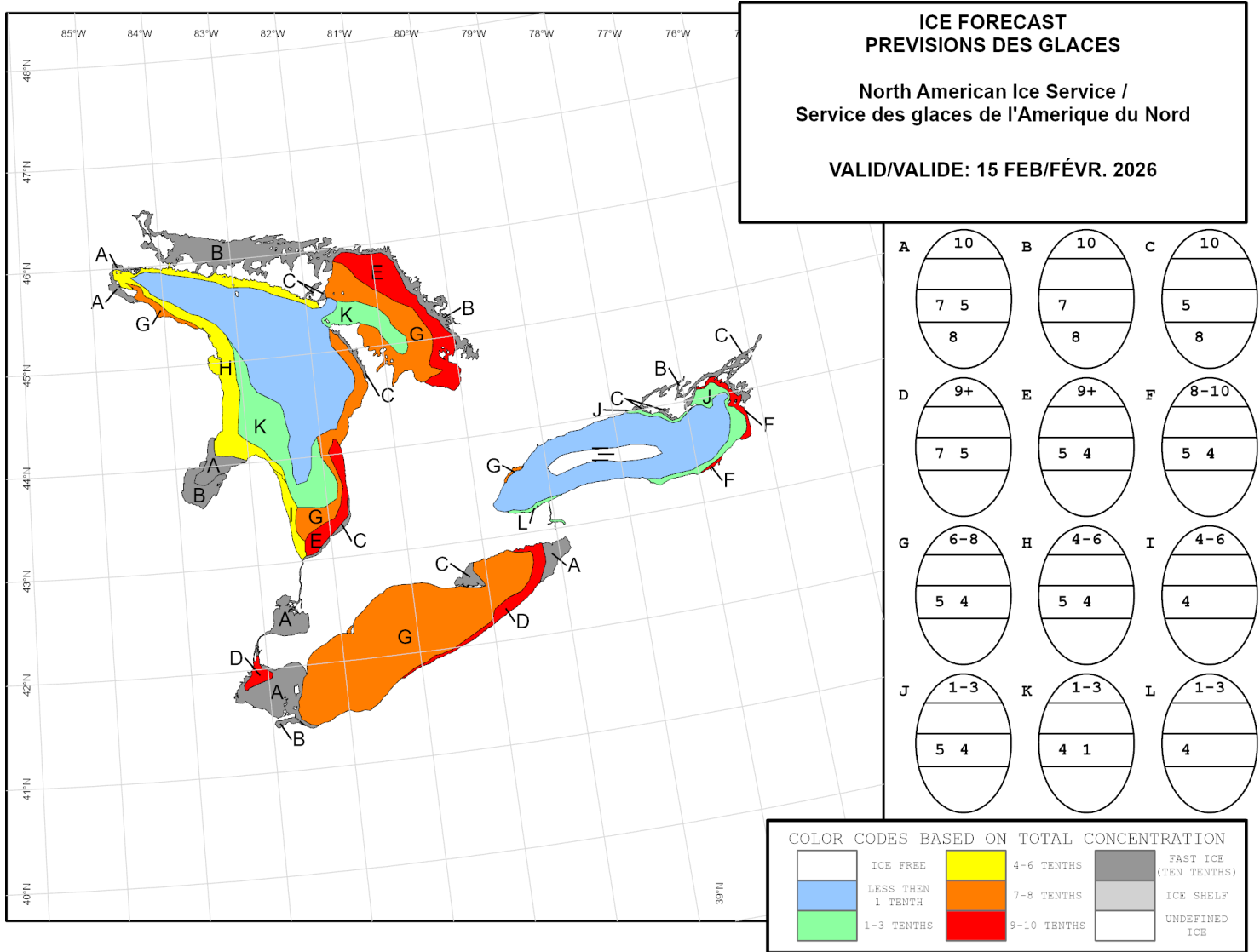


Seasonal Outlook - Great Lakes - Winter 2025-2026



Seasonal Outlook - Great Lakes - Winter 2025-2026

# North American Ice Service



Seasonal Outlook - Great Lakes - Winter 2025-2026