

FECN16 CWIS 011800

THIRTY DAY ICE OUTLOOK FOR THE EASTERN AND NORTHERN ARCTIC FOR NOVEMBER ISSUED BY ENVIRONMENT CANADA ON 01 NOVEMBER 2023.

THE NEXT 30 DAY OUTLOOK WILL BE ISSUED ON 15 NOVEMBER 2023.

Summary for October 12 to October 30.

Average temperatures were above normal for Barrow Strait, Lancaster Sound, Jones Sound, northwestern Baffin Bay, and the northern Canadian Arctic Archipelago. Average air temperatures were below normal for Nares Strait and Kane Basin. Elsewhere, average air temperatures were near normal. Freeze up is currently 1-2 weeks late for northern Baffin Bay.

Weather forecast for November.

Air temperatures are forecast to be below normal for Nares Strait, Kane Basin, and the northern Canadian Arctic Archipelago. Near normal temperatures are expected elsewhere.

Northern Baffin Bay.

November 1-7

- 7-8 tenths grey ice except 9-9+ tenths multi-year and first-year ice in the extreme northwestern section.
- 7-8 tenths grey and grey-white ice including 1-3 tenths multi-year ice in the southwestern section.

November 8-15

- 9-9+ tenths grey and grey-white ice except 9-9+ tenths multi-year and first-year ice in the northwestern section.
- A trace of multi-year ice embedded in the southwestern section.

November 16-22

- 9-9+ tenths grey-white ice except 9-9+ tenths multi-year and first-year ice in the northwestern section.
- A trace of multi-year ice embedded in the southwestern section.

November 23-30

- 9-9+ tenths grey-white and first-year ice including a trace of multi-year ice
- 9-9+ tenths multi-year and first-year ice in the western section.

Southwestern Baffin Bay.

November 1-7

- Bergy water except 1-3 tenths new and grey ice including a trace of multi-year ice in the northwestern section.

November 8-15

- 1-3 tenths new and grey ice except 7-8 tenths new and grey ice including a trace of multi-year ice in the northern section.

November 16-22

- 7-8 tenths grey and grey-white ice including a trace of multi-year ice.

November 23-30

- 9-9+ plus tenths grey and grey-white ice including a trace of multi-year ice.
- 9-9+ plus tenths multi-year and first-year ice in the extreme northwestern section.

Pond and Navy Board Inlets.

November 1-7

- 9-9+ tenths grey and grey-white ice
- 1-3 tenths multi-year ice embedded in the western section.

November 8-22

- 9-9+ tenths grey-white and multi-year ice.
- Consolidated grey-white ice along parts of the coast.

November 23-30

- 9-9+ tenths grey-white and multi-year ice. Consolidated grey-white ice along parts of the coast.
- Consolidated multi-year and first-year ice in Navy Board.

Admiralty Inlet.

Lancaster Sound.

Barrow Strait.

Prince Regent Inlet.

Gulf of Boothia.

Wellington Channel.

McDougall Sound.

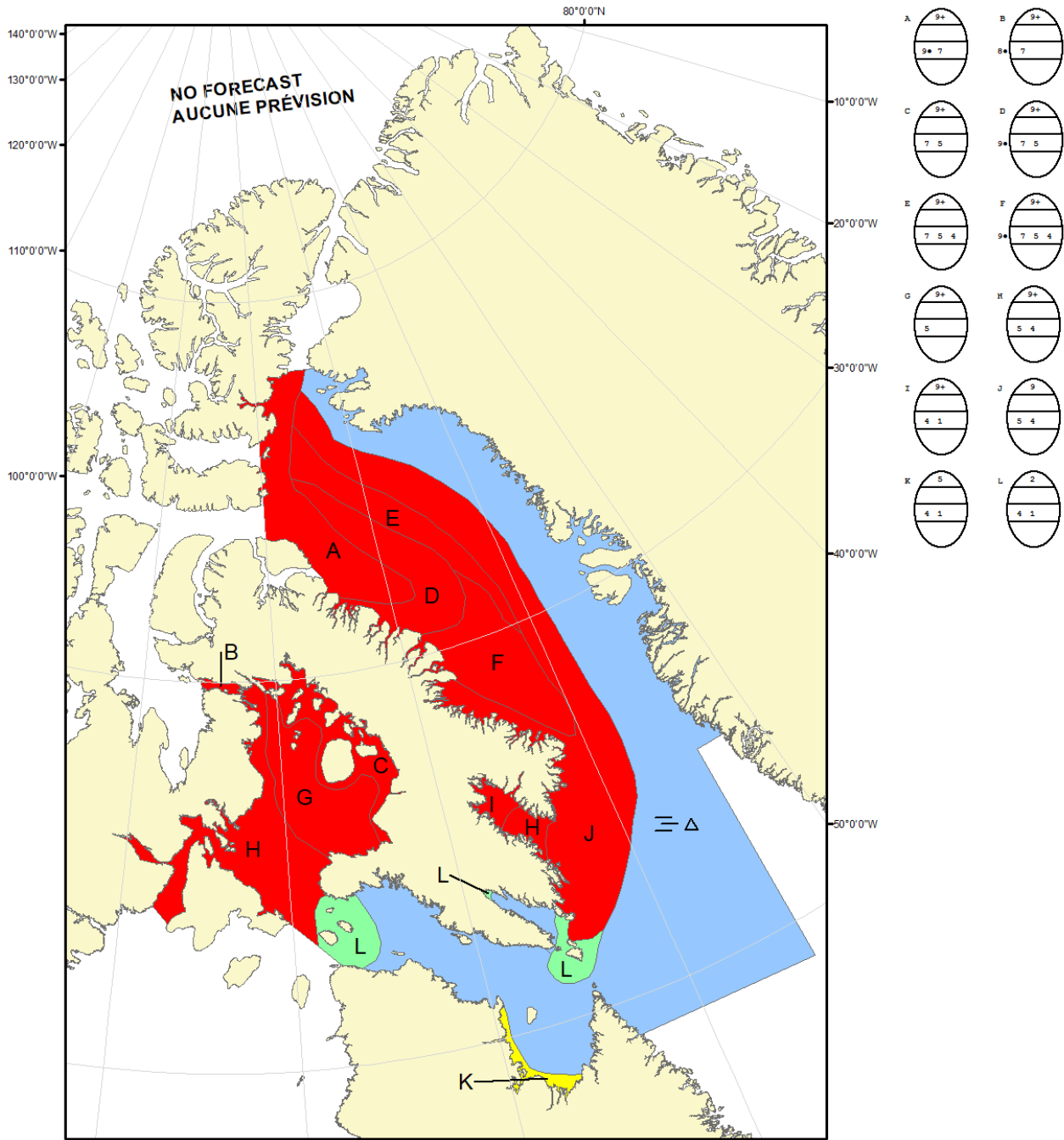
Jones Sound

Norwegian Bay

Eureka Sound

Western Kane Basin.

Forecasts have ended for the season.



COLOR CODES BASED ON TOTAL CONCENTRATION			
	ICE FREE		4-6 TENTHS
	LESS THAN 1 TENTH		7-8 TENTHS
	1-3 TENTHS		9-10 TENTHS
			FAST ICE (TEN TENTHS)
			ICE SHELF
			UNDEFINED ICE

North American Ice Service /
Service des glaces de l'Amérique du Nord
ICE FORECAST - 30 DAY
PRÉVISIONS DES GLACES - 30 JOURS
VALID/VALIDE: 30 NOV/30 NOV. 2023