

FECN16 CWIS 151800

THIRTY DAY ICE OUTLOOK FOR THE EASTERN AND NORTHERN ARCTIC FOR MID-JULY TO MID-AUGUST ISSUED BY ENVIRONMENT CANADA ON 15 JULY 2024.

THE NEXT 30 DAY OUTLOOK WILL BE ISSUED ON 30 JULY 2024.

Summary for July 1 to July 12.

Average air temperatures were above normal over northern Kane Basin and near normal over Baffin Bay. Elsewhere, average air temperatures were below normal. Ice melt is around 1-2 weeks later than normal over Baffin Bay and Jones Sound. Ice melt is around 1-2 weeks earlier than normal over Lancaster Sound and Barrow Strait. Elsewhere, ice melt is near normal.

Weather forecast for July 15 to August 15.

Air temperatures are forecast to be below normal over Baffin Bay, Jones Sound and Kane Basin while above normal air temperatures are expected over Barrow Strait, Lancaster Sound, northern Prince Regent Inlet and southern Committee Bay. Elsewhere, air temperatures are forecast to be near normal.

Northern Baffin Bay.

July 15-26

- 1-3 tenths first-year ice and old ice with areas of 7-8 tenths first-year and old ice drifting in from Kane Basin into the northwestern section towards the entrance to Jones Sound.
- 1-3 tenths first-year ice and old ice with areas of 7-8 tenths first-year ice including up to 2 tenths old ice in the extreme southwestern section.
- 7-8 tenths first-year ice including a trace of old ice with areas of 9-9+ tenths first-year ice including a trace of old ice in the southeastern section.
- Elsewhere, bergy water with areas of 1-3 tenths first-year ice and old ice.
- Consolidated first-year and old ice along the coasts continuing to fracture.

July 26-August 2

- 1-3 tenths ice with areas of 7-8 tenths ice drifting in from Kane Basin into the northwestern section towards the entrance to Jones Sound.
- 1-3 tenths ice with areas of 4-6 tenths ice in the extreme southwestern section.
- 4-6 tenths ice with areas of 7-8 tenths ice in the extreme southeastern section.
- Elsewhere, bergy water with areas of 1-3 tenths ice.
- Consolidated ice along the coasts continuing to fracture.

August 3-15

- 1-3 tenths ice with areas of 7-8 tenths ice drifting in from Kane Basin into the northwestern section towards the entrance to Jones Sound.
- Bergy water with occasional areas of 4-6 tenths ice in the extreme southeastern section.
- Elsewhere, bergy water.

Southwestern Baffin Bay.

July 15-19

- 7-8 tenths first-year ice including up to 2 tenths old ice in the extreme western section just east of the coast.
- 7-8 tenths first-year ice including a trace of old ice with areas of 9-9+ tenths first-year ice including a trace of old ice in the extreme eastern section.
- Elsewhere, 9-9+ first-year ice including up to 2 tenths old ice.
- Consolidated first-year ice including up to 3 tenths old ice continuing to fracture.

July 20-27

- 4-6 tenths ice with areas of 7-8 tenths ice in the extreme western and eastern sections.
- 1-3 tenths ice with areas of 4-6 tenths ice in the northwestern section.
- Elsewhere, 7-8 tenths ice with areas of 9-9+ tenths ice.
- Consolidated ice continuing to fracture.

July 28-August 8

- Bergy water with areas of 1-3 tenths ice in the extreme eastern and northwestern sections.
- Elsewhere, 4-6 tenths ice with areas of 7-8 tenths ice.
- Consolidated ice continuing to fracture.

August 9-15

- Bergy water with areas of 4-6 tenths ice in the eastern section.
- Elsewhere, bergy water with occasional areas of 1-3 tenths ice.

Pond and Navy Board Inlets.

July 15-17

- 4-6 tenths first-year ice including a trace of old ice in the extreme eastern section.
- Consolidated first-year ice including up to 3 tenths old ice beginning to fracture in Pond and Navy Board Inlets.

July 18-26

- 7-8 tenths ice with areas of 9-9+ tenths ice in Pond and Navy Board Inlets.
- Consolidated ice fracturing in Eclipse Sound.

July 27-August 2

- 4-6 tenths ice with areas of 7-8 tenths ice in Eclipse Sound.
- Elsewhere, 1-3 tenths ice with areas of 4-6 tenths ice.

August 3-15

- Ice melting to bergy water conditions.

Admiralty Inlet.

July 15-20

- 7-8 tenths first-year ice including a trace of old ice in the extreme northern section.
- 7-8 tenths first-year ice in the southern section.
- Elsewhere, consolidated first-year ice beginning to fracture.

July 21-28

- 4-6 tenths ice with areas of 7-8 tenths ice.

July 29- August 2

- Bergy water with areas of 1-3 tenths ice.

After August 3

- Ice melting completely to bergy water.

Lancaster Sound.

July 15-29

- Bergy water with areas of 1-3 tenths first-year and old ice in the western and extreme eastern sections.
- 4-6 tenths first-year ice including a trace of old ice in the extreme western section.
- Consolidated first-year ice along parts of the coasts beginning to fracture.

July 29-August 10

- Bergy water except areas of 1-3 tenths ice in the western section.

August 10-15

- Bergy water except occasional areas of 1-3 tenths ice in the extreme southwestern section.

Barrow Strait.

July 15-22

- 1-3 tenths first-year ice including a trace of old ice with areas of 4-6 tenths first-year ice including a trace of old ice in the eastern half.
- 9-9+ tenths first-year ice including a trace of old ice in the western half.

July 23-August 2

- Bergy water with areas 1-3 tenths ice in the eastern half.
- 7-8 tenths ice in the western half.

August 3-15

- Bergy water with occasional areas of 1-3 tenths ice in the eastern half.
- 4-6 tenths ice with some areas of 7-8 tenths ice in the western half.

Prince Regent Inlet.

July 15-20

- 4-6 tenths first-year ice including up to 1 tenth of old ice except 9-9+ tenths first-year ice including a trace of old ice in the southeastern section.

July 21-28

- Bergy water with areas of 1-3 tenths ice in the northern section.
- 4-6 tenths ice with areas of 7-8 tenths ice in the extreme southern section.
- Elsewhere, 1-3 tenths ice with areas of 4-6 tenths ice.

July 29-August 10

- Bergy water with occasional areas of 1-3 tenths ice except 1-3 tenths ice with areas of 4-6 tenths ice in the extreme southern section.

August 10-15

- Ice melting out to bergy water.

Gulf of Boothia.

July 15-18

- Bergy water with areas of 1-3 tenths first-year ice in southern Pelly Bay.
- Elsewhere, 9-9+ tenths first-year ice.
- Consolidated first-year ice in Pelly and Committee Bays continuing to fracture.

July 19-25

- Bergy water with areas 4-6 tenths ice in the northern part of the Pelly Bay.
- Elsewhere, 9-9+ tenths ice.
- Consolidated ice continuing to fracture.

July 26-31

- Bergy water with areas of 1-3 tenths ice in Pelly Bay.
- 4-6 tenths ice with areas of 7-8 tenths ice in the extreme northeastern and southern parts of Committee Bay.
- Elsewhere, 7-8 tenths ice with areas of 9-9+ tenths ice.

August 1-6

- Bergy water in Pelly Bay.
- 1-3 tenths ice with areas of 4-6 tenths ice in the extreme northern and southern sections of Committee Bay.
- 4-6 tenths ice with areas of 7-8 tenths ice in the northern section.
- Elsewhere, 7-8 tenths ice with areas of 9-9+ tenths ice.

August 7-15

- Bergy water in Pelly Bay.
- 1-3 tenths ice with areas of 4-6 tenths ice in the northern section and southern part of Committee Bay.
- Elsewhere, 4-6 tenths ice with areas of 7-8 tenths ice.

Wellington Channel.

July 15-18

- 9-9+ tenths first-year ice including a trace of old ice in the southern section.
- Elsewhere, consolidated first-year ice beginning to fracture.

July 19-28

- 7-8 tenths ice with areas of 9-9+ tenths ice.

July 29-August 8

- 4-6 tenths ice with areas of 7-8 tenths ice.

August 9-15

- Bergy water with areas of 1-3 tenths ice.

McDougall Sound.

July 15-19

- 4-6 tenths first-year ice including a trace of old ice in the northern section.
- Elsewhere, consolidated first-year ice including up to 2 tenths old ice beginning to fracture.

July 20-29

- 1-3 tenths ice with areas of 4-6 tenths ice north and northwest of Cornwallis Island.
- Elsewhere, 7-8 tenths ice.

July 30-August 7

- Open water with areas of 4-6 tenths ice.

August 8-15

- Open water with areas of 1-3 tenths ice.

Jones Sound.

July 15-18

- Bergy water with areas of 4-6 tenths first-year ice including up to 1 tenth old ice in the extreme northwestern and extreme eastern sections.
- Elsewhere, consolidated first-year ice including up to 2 tenths old ice beginning to fracture.

July 19-22

- 1-3 tenths ice with areas of 9-9+ tenths ice in the extreme eastern and northwestern sections.
- Elsewhere, consolidated ice continuing to fracture.

July 23-31

- 4-6 tenths ice with areas of 9-9+ tenths ice in the eastern and southern sections.
- Elsewhere, 1-3 tenths ice.

August 1-7

- 4-6 tenths ice with areas of 7-8 tenths ice in the southwestern section.
- Elsewhere, 1-3 tenths ice with areas of 4-6 tenths ice.

August 8-15

- 1-3 tenths ice with areas of 4-6 tenths ice in the western section.
- Elsewhere, bergy water with occasional 1-3 tenths ice.

Norwegian Bay.

July 15-29

- 9-9+ tenths first-year ice including up to 2 tenths old ice in the southern section.
- Elsewhere, consolidated old and first-year ice continuing to fracture.

July 30-August 4

- 7-8 tenths ice with areas of 9-9+ tenths ice in the southern section.
- Elsewhere, consolidated ice continuing to fracture.

August 5-15

- 4-6 tenths ice with areas of 7-8 tenths ice in the southern section.
- 7-8 tenths ice with areas 9-9+ tenths ice in the northern section.

Eureka Sound.

July 15-24

- 9-9+ tenths first-year ice in the northern section.
- Elsewhere, consolidated first-year ice continuing to fracture in some sections.

July 25-31

- 4-6 tenths ice with areas of 9-9+ tenths ice.
- Remaining consolidated ice fracturing.

August 1-7

- 1-3 tenths ice with areas of 7-8 tenths ice in the extreme northern and extreme southern sections.

August 8-15

- 1-3 tenths ice with areas of 4-6 tenths ice in the extreme northern and extreme southern sections.

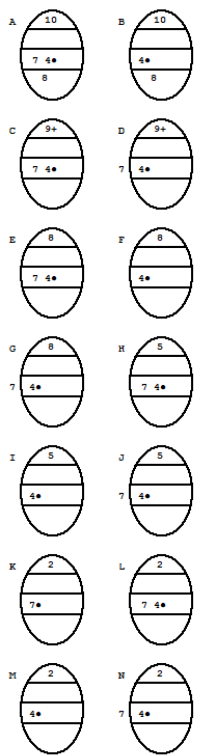
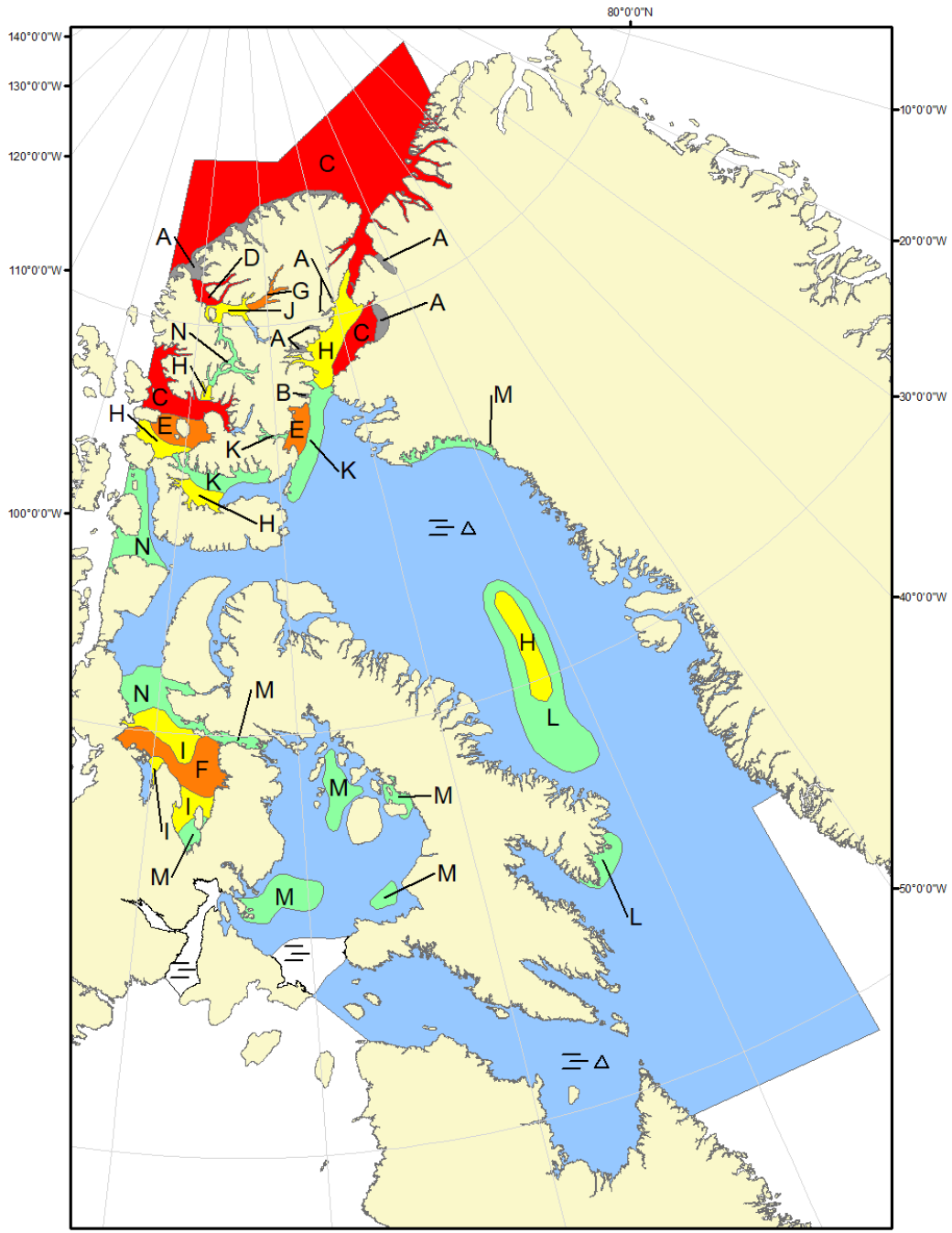
Western Kane Basin.

July 15-August 1

- 7-8 tenths first-year and old ice with areas of 9-9+ tenths first-year and old ice in the extreme northern and extreme southern sections.
- Elsewhere, 4-6 tenths first-year ice and old ice.
- Consolidated old and first-year ice along the coasts continuing to fracture.

August 2-15

- 4-6 tenths ice with areas of 9-9+ tenths ice.



COLOR CODES BASED ON TOTAL CONCENTRATION			
	ICE FREE		4-6 TENTHS
	LESS THEN 1 TENTH		7-8 TENTHS
	1-3 TENTHS		9-10 TENTHS
			FAST ICE (TEN TENTHS)
			ICE SHELF
			UNDEFINED ICE

North American Ice Service /
Service des glaces de l'Amérique du Nord
ICE FORECAST - 30 DAY
PRÉVISIONS DES GLACES - 30 JOURS
VALID/VALIDE: 15AUG/AOÛT. 2024