

FECN16 CWIS 151800

THIRTY DAY ICE OUTLOOK FOR THE EASTERN AND NORTHERN ARCTIC FOR MID-OCTOBER TO MID-NOVEMBER ISSUED BY ENVIRONMENT CANADA ON 15 OCTOBER 2024. THE NEXT 30 DAY OUTLOOK WILL BE ISSUED ON 1 NOVEMBER 2024.

### **Summary for October 1 to 12.**

Average air temperatures were well above normal for all regions.

Ice extent remains lower than the climatological normal in Eureka Sound, Norwegian Bay, McDougall Sound, Wellington Channel, Barrow Strait, Jones Sound, western Lancaster Sound, northern Prince Regent Inlet, Committee Bay and parts of extreme northwestern Baffin Bay. Additionally, freeze-up is 4-5 weeks slower than normal in the central archipelago. There remains more ice than normal in parts of Prince Regent Inlet and along parts of the coast in the eastern section of Gulf of Boothia.

### **Weather forecast for mid-October to mid-November.**

Air temperatures are forecast to be above normal over all areas.

### **Northern Baffin Bay.**

October 15-21

- 7-8 tenths grey-white, second-year and multi-year ice with areas of 9-9+ tenths grey-white, second-year and multi-year ice drifting in from Kane Basin into the northwestern section towards the entrance to Jones Sound.
- Bergy water with areas of 4-6 tenths new and grey ice along the coast near Devon Island.
- Elsewhere, bergy water.

October 22-31

- 9-9+ tenths grey-white, first-year, second-year and multi-year ice drifting in from Kane Basin into the northwestern section. including into the entrance of Jones Sound.
- 7-8 tenths grey-white, second-year and multi-year ice along the coast near Devon Island.
- 7-8 tenths new and grey ice including up to 2 tenths multi-year ice in the extreme northern section and along the coast of Baffin Island.
- Elsewhere, bergy water with occasional areas of 1-3 tenths new ice.

November 1-7

- 9-9+ tenths first-year, second-year and multi-year ice in extreme northern section including near the entrance to Jones Sound and along the coast of Devon Island.
- 9-9+ tenths grey-white, second-year and multi-year ice in the northwestern section near the entrance to Lancaster Sound and along the Baffin Island coast.
- 7-8 tenths new, grey and grey-white ice including a trace of multi-year ice in the northern section.
- Elsewhere, bergy water with areas of 4-6 tenths new ice.

November 8-15

- 9-9+ tenths first-year, second-year, multi-year ice in the extreme northwestern section.
- 9-9+ tenths grey-white, second-year and multi-year ice in the western section along the coast of Baffin Island.

- Elsewhere, 9-9+ tenths new, grey and grey-white ice with a trace of multi-year ice except 1-3 tenths new ice with areas of 4-6 tenths new and grey ice in the extreme southeastern section.

## **Southwestern Baffin Bay.**

October 15-21

- Bergy water.

October 22-31

- 4-6 tenths new and grey ice along the coast in the extreme northwestern section.
- Elsewhere, bergy water.

November 1-7

- 9-9+ tenths grey and grey-white ice including a trace of multi-year ice along the coast in the extreme northwestern section.
- Bergy water with areas of 4-6 tenths new ice in the western section.
- Elsewhere, bergy water.

November 8-15

- 9-9+ tenths grey-white and second-year ice including up to 1 tenth multi-year ice along the coast in the northwestern section.
- 7-8 tenths new, grey, and grey-white ice including a trace of multi-year ice in the western section.
- 4-6 tenths new and grey ice in the central section.
- Bergy water with occasional areas of 1-3 tenths new ice in the eastern section.

## **Pond and Navy Board Inlets.**

October 15-22

- 1-3 tenths new ice.

October 23-28

- 4-6 tenths grey and grey-white ice including a trace of multi-year ice in the western section.
- Elsewhere, 1-3 tenths new and grey ice.

October 29-November 2

- 9-9+ tenths grey-white ice including up to 1 tenth multi-year ice in the western section.
- Elsewhere, 9-9+ tenths new and grey ice.

November 3-7

- 9-9+ tenths grey-white and second-year ice including up to 1 tenth multi-year ice in the western section.
- Elsewhere, 9-9+ tenths grey and grey-white ice including a trace of multi-year ice.

November 8-15

- 9-9+ tenths first-year, second-year and multi-year ice in the northwestern section.
- 9-9+ tenths grey-white, second-year and multi-year ice in the extreme eastern section.
- Consolidated grey-white ice including up to 1 tenth multi-year ice in Eclipse Sound.

## **Admiralty Inlet.**

October 15-19

- Bergy water.

October 20-26

- 1-3 tenths new ice.

October 27-31

- 4-6 tenths new and grey ice with areas of 9-9+ tenths grey and grey-white ice.

November 1-9

- 9-9+ tenths new, grey and grey-white ice.

November 10-15

- Consolidated grey-white ice except 9-9+ tenths grey-white ice in the extreme northern section.

## **Lancaster Sound.**

October 15-20

- Bergy water with areas of 1-3 tenths new ice.

October 21-27

- 7-8 tenths new and grey ice with areas of 9-9+ tenths grey-white, second-year and multi-year ice in the extreme eastern section.

October 28-November 6

- 9-9+ tenths grey and grey-white ice in the western section.
- 9-9+ tenths grey-white, second-year and multi-year ice in the extreme eastern section.

November 7-15

- 9-9+ tenths grey and grey-white ice in the western section.
- 9-9+ tenths grey-white, first-year, second-year and multi-year ice in the extreme eastern section.

## **Barrow Strait.**

October 15-21

- Bergy water with areas of 1-3 tenths new ice.

October 22-28

- 4-6 tenths new and grey ice with areas of 7-8 tenths new and grey ice in the western section.
- Elsewhere, 1-3 tenths new and grey ice with areas of 4-6 tenths new and grey ice.

October 29-November 6

- 7-8 tenths grey and grey-white ice with areas of 9-9+ tenths grey and grey-white ice.

November 7-15

- 9-9+ tenths grey and grey-white ice.

## **Prince Regent Inlet.**

October 15-22

- Bergy water with areas of 4-6 tenths new and second-year ice near Creswell Bay.

October 23-29

- 1-3 tenths new ice with areas of 7-8 tenths new and second-year ice.

October 30-November 15

- 9-9+ tenths grey and grey-white ice in the northern section.

- Elsewhere, 9-9+ tenths new, grey, grey-white and second-year ice.

## **Gulf of Boothia.**

October 15-22

- Bergy water with areas of 1-3 tenths new and second-year ice along the coast of Baffin Island in the northeastern section including near the entrance to Fury and Hecla Strait.
- Elsewhere, bergy water except ice free in Pelly Bay.

October 23-November 2

- 4-6 tenths new and grey ice with areas of 9-9+ tenths grey and second-year ice in the northeastern section including near the entrance to Fury and Hecla Strait.
- Elsewhere, bergy water with areas of 7-8 tenths new ice except open water in Pelly Bay.

November 3-9

- 7-8 tenths new and grey ice with areas of 9-9+ tenths grey and second-year ice in the northeastern section.
- 7-8 tenths new ice in Pelly Bay.

November 10-15

- 9-9+ tenths grey and grey-white ice with areas of 9-9+ tenths grey-white and second-year ice in the northeastern section.

**Wellington Channel**

**McDougall Sound**

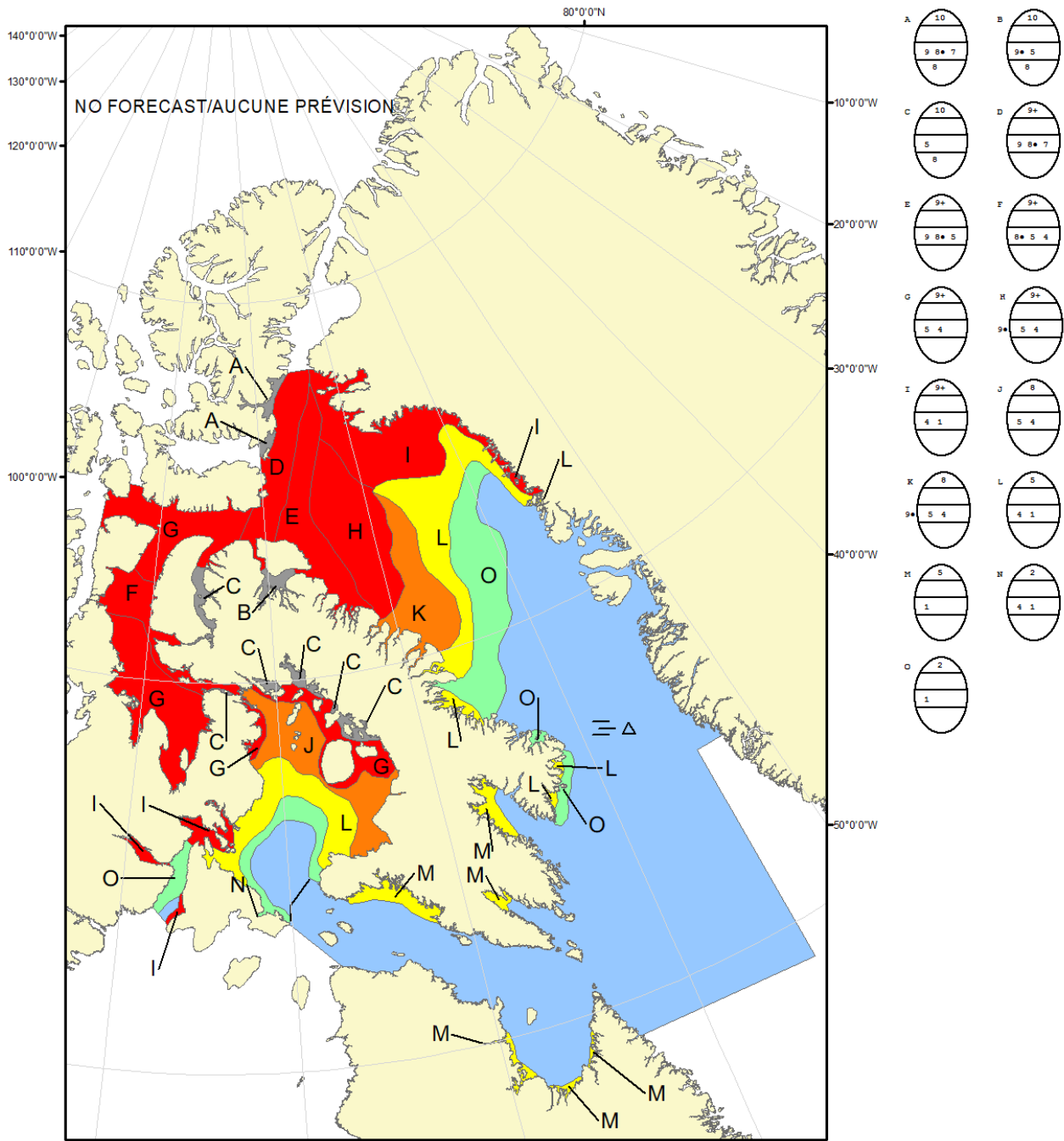
**Jones Sound**

**Norwegian Bay**

**Eureka Sound**

**Western Kane Basin.**

Forecasts have ended for the season.



COLOR CODES BASED ON TOTAL CONCENTRATION					
	ICE FREE		4-6 TENTHS		FAST ICE (TEN TENTHS)
	LESS THEN 1 TENTH		7-8 TENTHS		ICE SHELF
	1-3 TENTHS		9-10 TENTHS		UNDEFINED ICE

**North American Ice Service /  
Service des glaces de l'Amérique du Nord**  
**ICE FORECAST - 30 DAY**  
**PRÉVISIONS DES GLACES - 30 JOURS**  
**VALID/VALIDE: 15 NOV/NOV 2024**