

FECN16 CWIS 011800

THIRTY DAY ICE OUTLOOK FOR THE EASTERN AND NORTHERN ARCTIC FOR NOVEMBER ISSUED BY ENVIRONMENT CANADA ON 1 NOVEMBER 2024. THE NEXT 30 DAY OUTLOOK WILL BE ISSUED ON 15 NOVEMBER 2024.

Summary for October 13 to 29.

Average air temperatures were well above normal for all regions.

Freeze-up is 4-5 weeks slower than normal in Lancaster Sound, Prince Regent Inlet, Admiralty Inlet and Gulf of Boothia. Eastern Gulf of Boothia has a record-breaking low ice extent with virtually no ice present. Elsewhere, freeze-up is around 3 weeks behind in Pond and Navy Board Inlet and around 2 weeks behind in northern and southern Baffin Bay.

Weather forecast for November.

Air temperatures are forecast to be above normal over all areas.

Northern Baffin Bay.

November 1-7

- 9-9+ tenths grey-white, second-year and multi-year ice drifting in from Kane Basin into the northwestern section including into the entrance of Jones Sound.
- 9-9+ tenths grey, grey-white and multi-year ice along the coast near Devon Island.
- 7-8 tenths new and grey ice including a trace of multi-year ice in the northwestern section near the entrance to Lancaster Sound.
- Elsewhere, bergy water with areas of 7-8 tenths new and grey ice including along the coast of Baffin Island.

November 8-15

- 9-9+ tenths first-year, second-year and multi-year ice in the northwestern section including near the entrance to Jones Sound and along the coast of Devon Island.
- 9-9+ tenths grey-white, second-year and multi-year ice in the northwestern section near the entrance to Lancaster Sound and along the Baffin Island coast.
- 7-8 tenths new, grey and grey-white ice including a trace of multi-year ice in the northeastern section.
- Elsewhere, bergy water with areas of 7-8 tenths new ice.

November 16-22

- 9-9+ tenths first-year, second-year and multi-year ice in the extreme northwestern section.
- 9-9+ tenths grey-white, second-year and multi-year ice in the western section along the coast of Baffin Island.
- Elsewhere, 9-9+ tenths new, grey and grey-white ice with a trace of multi-year ice except 1-3 tenths new ice with areas of 4-6 tenths new and grey ice in the extreme southeastern section.

November 23-30

- 9-9+ tenths first-year, second-year and multi-year ice in the extreme northwestern section and in the southwestern section along the coast of Baffin Island.
- Elsewhere, 9-9+ tenths grey and grey-white ice with a trace of multi-year ice except 9-9+ tenths new and grey ice in the extreme southeastern section.

Southwestern Baffin Bay.

November 1-7

- 4-6 tenths new and grey ice along the coast in the extreme northwestern section.
- Elsewhere, bergy water.

November 8-15

- 9-9+ tenths grey and grey-white ice including a trace of multi-year ice along the coast in the extreme northwestern section.
- 4-6 tenths new ice along the coast in the southwestern section.
- Bergy water with occasional areas of 1-3 tenths new ice in the central section.
- Bergy water in the extreme eastern section.

November 16-22

- 9-9+ tenths grey-white and second-year ice including up to 1 tenth multi-year ice along the coast in the northwestern section.
- 7-8 tenths new, grey, and grey-white ice including a trace of multi-year ice along the coast in the southwestern section.
- 4-6 tenths new and grey ice in the central section.
- Bergy water with occasional areas of 1-3 tenths new ice in the extreme eastern section.

November 23-30

- 9-9+ tenths grey-white, first-year, second-year ice including up to 1 tenth multi-year ice along the coast in the northwestern section.
- 9-9+ tenths grey and grey-white ice including a trace of multi-year ice along the coast in the southwestern section.
- 9-9+ tenths new and grey ice in the central section.
- Bergy water with areas of 7-8 tenths new and grey ice in the extreme eastern section.
- Consolidated grey-white ice along parts of the Baffin Island coast.

Pond and Navy Board Inlets.

November 1-5

- 4-6 tenths new ice.

November 6-12

- 4-6 tenths grey and grey-white ice including a trace of multi-year ice in the western section.
- Elsewhere, 4-6 tenths new and grey ice.

November 13-19

- 9-9+ tenths grey-white ice including up to 1 tenth multi-year ice in the western section.
- Elsewhere, 9-9+ tenths new and grey ice.

November 20-26

- 9-9+ tenths grey-white and second-year ice including up to 1 tenth multi-year ice in the western section.
- Elsewhere, 9-9+ tenths grey and grey-white ice including a trace of multi-year ice.

November 27-30

- 9-9+ tenths first-year, second-year and multi-year ice.
- Consolidated grey-white ice including up to 1 tenth multi-year ice in Eclipse Sound.

Admiralty Inlet.

November 1-7

- 1-3 tenths new ice.

November 8-15

- 4-6 tenths new and grey ice with areas of 9-9+ tenths grey and grey-white ice.

November 16-22

- 9-9+ tenths new, grey and grey-white ice.

November 23-30

- Consolidated grey-white ice except 9-9+ tenths grey-white and first-year ice in the extreme northern section.

Lancaster Sound.

November 1-7

- 4-6 tenths new ice except 7-8 tenths new and grey ice including a trace of multi-year ice in the eastern section.

November 8-15

- 7-8 tenths new and grey ice with areas of 9-9+ tenths grey-white, second-year and multi-year ice in the extreme eastern section.

November 16-22

- 9-9+ tenths grey and grey-white ice in the western section.
- 9-9+ tenths grey-white, second-year and multi-year ice in the extreme eastern section.

November 23-30

- 9-9+ tenths first-year, second-year and multi-year ice in the extreme eastern section.
- Elsewhere, 9-9+ tenths grey-white and first-year ice.
- Consolidated first-year ice along parts of the coast in the northern section.

Barrow Strait.

November 1-8

- 9-9+ tenths new ice in the eastern section.
- 9-9+ tenths grey and grey-white ice in the western section.

November 9-15

- 9-9+ tenths grey ice in the eastern section.
- 9-9+ tenths grey-white ice in the western section.

November 16-22

- 9-9+ tenths grey and grey-white ice.

November 23-30

- 9-9+ tenths grey-white and first-year ice.

Prince Regent Inlet.

November 1-7

- 1-3 tenths new ice.
- 4-6 tenths new and second-year ice near Creswell Bay.

November 8-15

- 7-8 tenths grey and grey-white ice in the extreme northern section.
- 9-9+ tenths new and grey ice except 9-9+ tenths grey and second-year ice near Creswell Bay.

November 16-25

- 9-9+ tenths grey and grey-white ice except 9-9+ tenths grey-white and second-year ice near Creswell Bay.

November 26-30

- 9-9+ tenths grey-white and first-year ice in the extreme northern section.
- Elsewhere, 9-9+ tenths grey-white ice except 9-9+ tenths grey-white and second-year ice near Creswell Bay.

Gulf of Boothia.

November 1-7

- Bergy water with areas of 4-6 tenths new ice except 7-8 tenths new and grey ice in Bernier Bay.
- Open water in Pelly Bay.

November 8-15

- 7-8 tenths new and grey ice except 9-9+ tenths grey ice in Bernier Bay.
- 7-8 tenths new ice in Pelly Bay.

November 16-22

- 9-9+ tenths grey and grey-white ice.
- Consolidated grey-white ice in Bernier Bay and Pelly Bay.

November 23-30

- 9-9+ tenths grey-white ice.
- Consolidated grey-white ice in Bernier Bay, Pelly Bay and parts of Committee Bay.

Wellington Channel

McDougall Sound

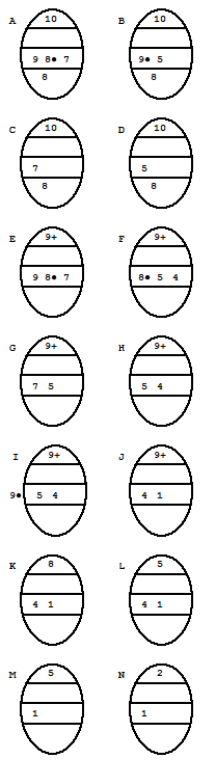
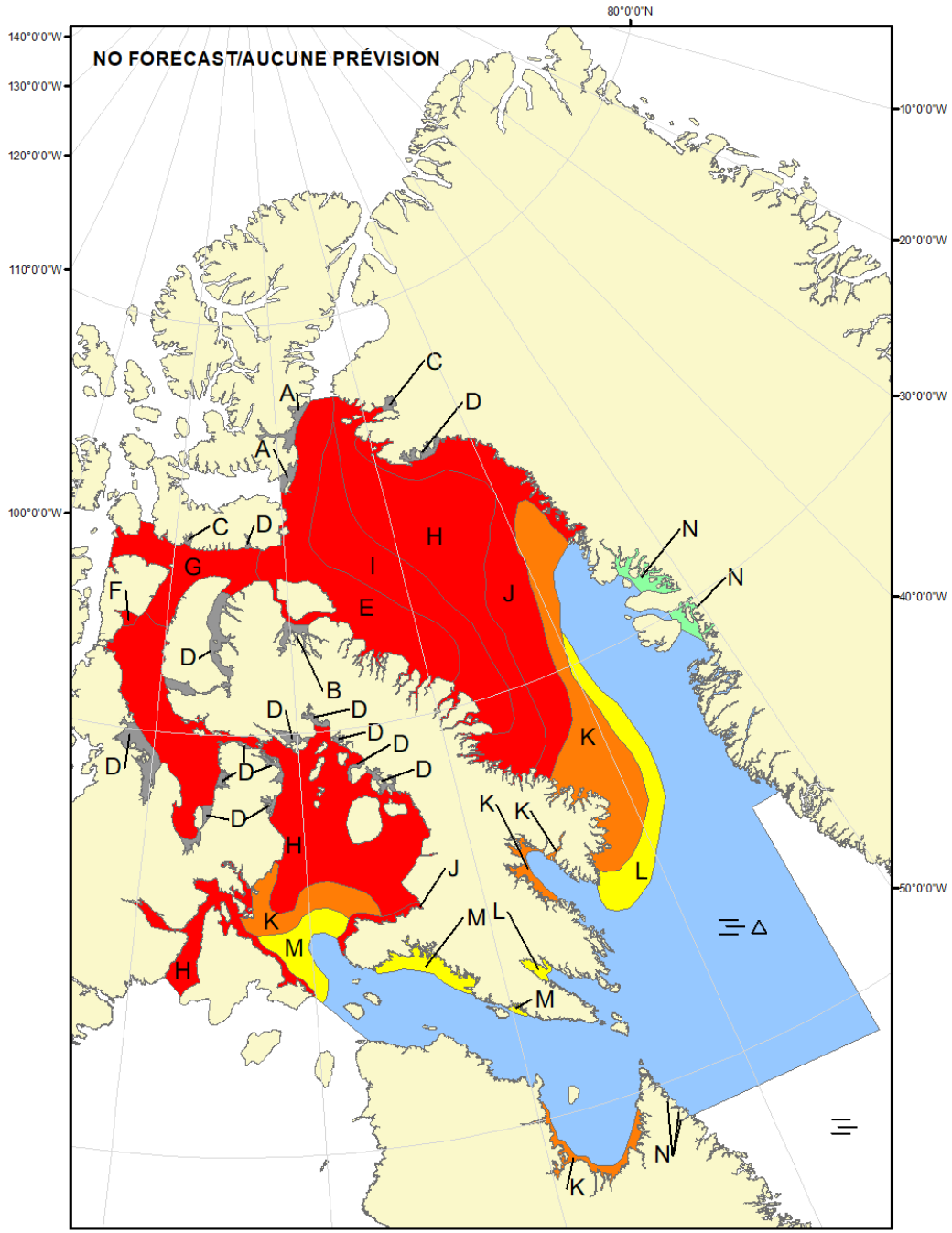
Jones Sound

Norwegian Bay

Eureka Sound

Western Kane Basin.

Forecasts have ended for the season.



COLOR CODES BASED ON TOTAL CONCENTRATION					
	ICE FREE		4-6 TENTHS		FAST ICE (TEN TENTHS)
	LESS THEN 1 TENTH		7-8 TENTHS		ICE SHELF
	1-3 TENTHS		9-10 TENTHS		UNDEFINED ICE

North American Ice Service /
 Service des glaces de l'Amérique du Nord
ICE FORECAST - 30 DAY
PRÉVISIONS DES GLACES - 30 JOURS
VALID/VALIDE: 30 NOV/NOV. 2024