

FECN16 CWIS 011800

THIRTY DAY ICE OUTLOOK FOR THE EASTERN AND NORTHERN ARCTIC FOR JULY
ISSUED BY ENVIRONMENT CANADA ON 1 JULY 2025.

THE NEXT 30 DAY OUTLOOK WILL BE ISSUED ON 15 JULY 2025.

Summary for June 15 to 27.

Average air temperatures were below normal over all forecast regions. Ice melt is around 3-4 weeks earlier than normal in eastern Barrow Strait, 2-3 weeks slower than normal in Lancaster Sound and northeast of Bylot Island. Ice melt is around 2 weeks faster than normal in northern Baffin Bay, 2-3 weeks faster than normal in northern Prince Regent Inlet. Elsewhere, ice melt is near normal.

Weather forecast for July 1 to July 31.

Air temperatures are forecast to be above normal in all regions except near to below normal over southern Baffin Bay and Kane Basin.

Northern Baffin Bay.

July 1-8

- Bergy water with occasional areas of 4-6 tenths first-year and old ice in the extreme northwestern section.
- 4-6 tenths first-year ice including a trace of old ice in the southeastern section and along the coast in the southwestern section.
- Consolidated first-year and old ice along the coasts continuing to fracture.

July 9-15

- Bergy water with areas of 4-6 tenths ice in the northwestern section.
- Bergy water with areas of 1-3 tenths ice in the southwestern and southeastern sections.

July 16-31

- Bergy water with areas of 4-6 tenths ice in the northwestern section.
- Bergy water with occasional areas of 1-3 tenths ice in the southwestern section.
- Elsewhere, bergy water.

Southwestern Baffin Bay.

July 1-6

- Bergy water in the extreme southeastern section.
- Elsewhere, 8-9+ tenths first-year ice including a trace of old ice except 7-8 tenths first-year ice including a trace of old ice in the extreme northwestern section.
- Consolidated first-year ice including a trace of old ice along the coast beginning to fracture.

July 7-15

- Bergy water in the extreme eastern section.
- 4-6 tenths ice in the extreme northwestern section.
- Elsewhere, 7-8 tenths ice with areas of 9-9+ tenths ice.
- Consolidated ice continuing to fracture.

July 16-25

- Bergy water in the extreme eastern section.
- 1-3 tenths ice in the extreme northwestern section.
- Elsewhere, 4-6 tenths ice with areas of 7-8 tenths ice.
- Consolidated ice continuing to fracture.

July 26-31

- Bergy water with areas of 1-3 tenths ice in the extreme northwestern section.
- Bergy water in the extreme eastern section.
- Elsewhere, 1-3 tenths ice with areas of 4-6 tenths ice.

Pond and Navy Board Inlets.

July 1-12

- 7-8 tenths first-year ice including a trace of old ice near the entrance to Pond Inlet.
- Elsewhere, consolidated first-year ice including a trace of old ice except consolidated first-year ice in Eclipse Sound.

July 13-20

- Consolidated ice fracturing in Pond and Navy Board Inlet.

July 21-26

- 7-8 tenths ice with areas of 9-9+ tenths ice in Pond and Navy Board Inlets.

July 26-31

- Ice melting completely to bergy water.

Admiralty Inlet.

July 1-8

- Consolidated first-year ice except 9-9+ tenths first-year ice near the entrance.

July 9-16

- Consolidated ice fracturing.

July 17-26

- 4-6 tenths ice with areas of 7-8 tenths ice.

After July 26

- Ice melting completely to bergy water.

Lancaster Sound

July 1-7

- 4-6 tenths first-year ice including a trace of old ice with areas of 9-9+ tenths first-year ice including a trace of old ice in the extreme eastern section.
- Elsewhere, bergy water with areas of 1-3 tenths first-year ice.
- Consolidated first-year ice along the coasts continuing to fracture.

July 8-15

- 1-3 tenths ice with areas of 7-8 tenths ice in the extreme eastern section.
- Elsewhere, bergy water with occasional areas of 1-3 tenths ice.
- Consolidated ice continuing to fracture.

July 16-23

- Bergy water with areas of 4-6 tenths ice in the eastern section.
- Elsewhere, bergy water with occasional areas of 1-3 tenths ice.

July 27-31

- Bergy water with occasional areas of 1-3 tenths ice.

Barrow Strait.

July 1-10

- Bergy water with areas of 1-3 tenths first-year ice in the eastern section.
- Consolidated first-year ice including a trace of old ice beginning to fracture in the western section.

July 11-15

- Bergy water with areas of 4-6 tenths ice in the eastern section.
- Consolidated ice continuing to fracture in the western section.

July 16-31

- 1-3 tenths ice in the eastern section.
- 4-6 tenths ice with areas of 7-8 tenths ice in the western section.

Prince Regent Inlet.

July 1-9

- 1-3 tenths first-year ice with areas of 7-8 tenths first-year ice in the northern section.
- 7-8 tenths first-year ice with areas of 9-9+ tenths first-year ice in the southern section.
- Consolidated first-year ice continuing to fracture.

July 10-19

- 1-3 tenths ice in the northern section.
- 7-8 tenths ice in the southern section.
- Consolidated ice continuing to fracture.

July 20-27

- Bergy water with areas of 1-3 tenths ice in the northern section.
- 4-6 tenths ice with areas of 7-8 tenths ice in the southern section.

July 28-31

- Bergy water in the northern section.
- 1-3 tenths ice in the southern section.

Gulf of Boothia.

July 1-7

- 9-9+ tenths first-year ice.
- Consolidated first-year ice continuing to fracture.

July 8-25

- 1-3 tenths ice in Pelly Bay.
- Elsewhere, 7-9+ tenths ice.
- Consolidated ice continuing to fracture.

July 26-31

- Bergy water with areas of 1-3 tenths ice in Pelly Bay.
- Elsewhere, 4-6 tenths ice with areas of 9-9+ tenths ice.

Wellington Channel.

July 1-14

- Consolidated first-year ice.

July 15-20

- Consolidated ice fracturing.

July 21-27

- 7-8 tenths ice with areas of 9-9+ tenths ice.

July 28-31

- Bergy water with areas of 1-3 tenth ice.

McDougall Sound.

July 1-15

- Consolidated first-year ice beginning to fracture.

July 16-21

- Consolidated ice fracturing completely.

July 22-27

- 4-6 tenths ice with areas of 7-8 tenths ice.

July 28-31

- 1-3 tenths ice with areas of 4-6 tenths ice.

Jones Sound.

July 1-15

- Bergy water with areas of 1-3 tenths first-year ice in the extreme northwestern section.
- Bergy water with areas of 4-6 tenths first-year ice including a trace of old ice in the eastern entrance near Lady Ann Strait.
- Consolidated first-year ice including up to 1 tenth old ice in the extreme eastern section near Coburg Island.
- Elsewhere, consolidated first-year ice.

July 16-22

- Consolidated ice in the central section fracturing.
- 1-3 tenths ice with areas of 9-9+ tenths ice in the extreme eastern and northwestern sections.

July 23-31

- 4-6 tenths ice with areas of 7-8 tenths ice in the eastern section.
- Bergy water with areas of 1-3 tenths ice in the northwestern section.
- Elsewhere, 9-9+ tenths ice.

Norwegian Bay.

July 1-20

- 7-9+ tenths first-year ice in the southern section.
- Elsewhere, consolidated first-year ice except consolidated first-year ice including a trace of old ice in the extreme northwestern section.

July 21-31

- 7-8 tenths ice in the southern section.
- Consolidated ice fracturing completely in the northern section.

Eureka Sound.

July 1-6

- Consolidated first-year ice.

July 7-16

- Consolidated ice beginning to fracture in the southern section.

July 17-22

- Remaining consolidated ice fracturing.

July 23-28

- 9-9+ tenths ice.

July 29-31

- 4-6 tenths ice.

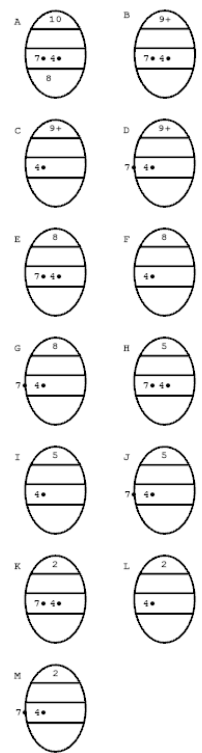
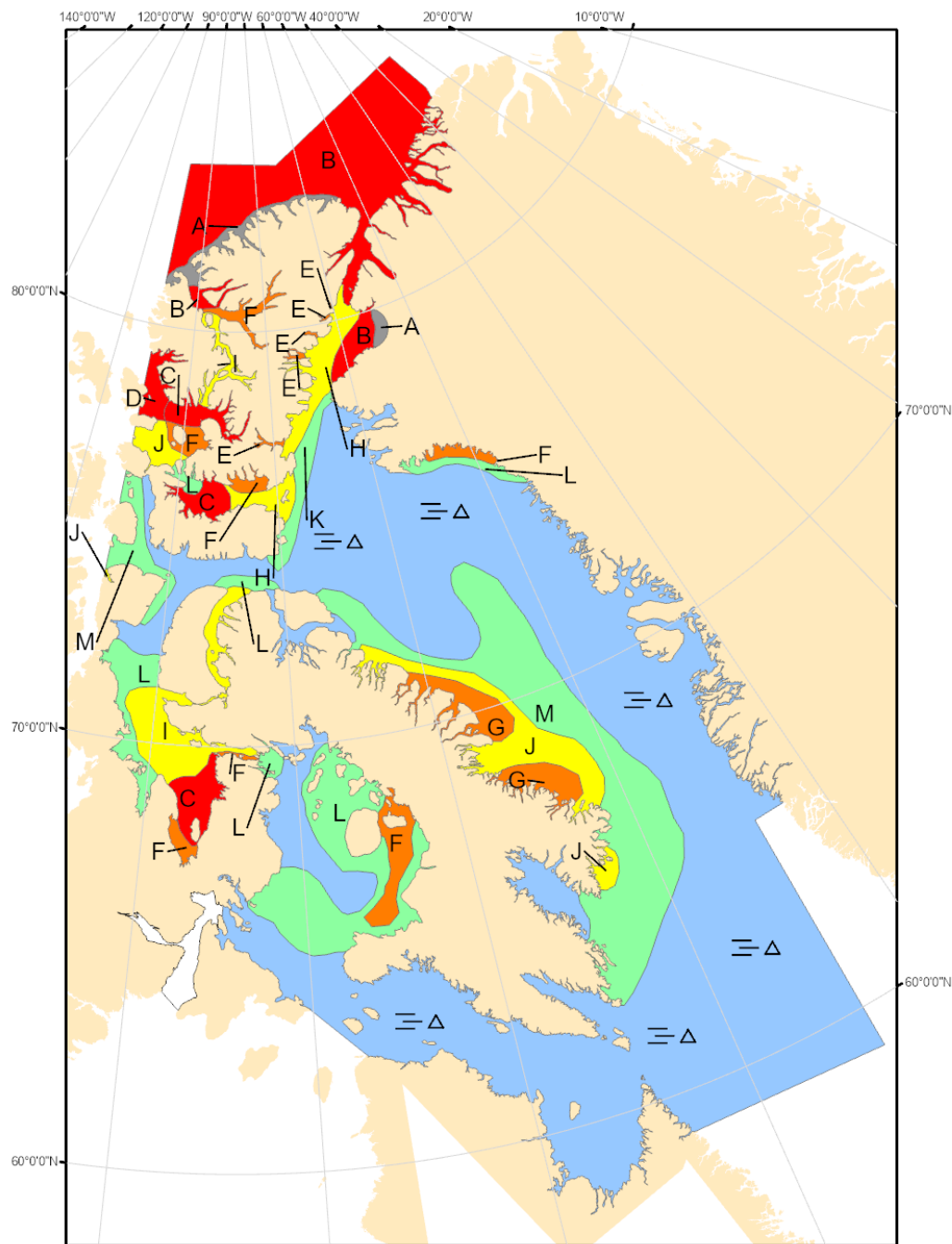
Western Kane Basin.

July 1-15

- 7-8 tenths first-year and old ice with areas of 9-9+ tenths first-year and old ice.
- Consolidated first-year and old ice along the coasts beginning to fracture.

July 16-31

- 4-6 tenths ice with areas of 9-9+ tenths ice.



COLOR CODES BASED ON TOTAL CONCENTRATION

ICE FREE	4-6 TENTHS	FAST ICE (TEN TENTHS)
LESS THEN 1 TENTH	7-8 TENTHS	ICE SHELF
1-3 TENTHS	9-10 TENTHS	UNDEFINED ICE

North American Ice Service /
Service des glaces de l'Amérique du Nord
ICE FORECAST - 30 DAY
PRÉVISIONS DES GLACES - 30 JOURS
VALID/VALIDE: 31 JUL/JUIL. 2025