

FECN16 CWIS 151800

THIRTY DAY ICE OUTLOOK FOR THE EASTERN AND NORTHERN ARCTIC FOR MID-JULY TO MID-AUGUST ISSUED BY ENVIRONMENT CANADA ON 15 JULY 2025.

THE NEXT 30 DAY OUTLOOK WILL BE ISSUED ON 1 AUGUST 2025.

Summary for July 1 to 13.

Average air temperatures were below normal over all forecast regions. Ice melt is 3 weeks earlier than normal in eastern Barrow Strait, 2-3 weeks earlier than normal in Prince Regent Inlet and 2 weeks earlier than normal in northern Baffin Bay. Ice melt is 2 weeks later than normal in southeastern Lancaster Sound. Elsewhere, the ice melt is near normal.

Weather forecast for July 15 to August 15.

Air temperatures are forecast to be above normal in all regions.

Northern Baffin Bay.

July 15-31

- 4-6 tenths first-year ice including a trace of old ice near the Baffin Island coast.
- Elsewhere, bergy water with isolated patches of 1-3 tenths first-year ice including a trace of old ice near parts of the Ellesmere Island coast.

August 1-10

- Bergy water with isolated patches 4-6 tenths ice near parts of the Ellesmere Island coast.

August 11-15

- 1-3 tenths ice with areas of 4-6 tenths ice in the extreme northern section drifting in from the Kane Basin.
- Elsewhere, bergy water.

Southwestern Baffin Bay.

July 15-24

- Bergy water in the extreme eastern section.
- 1-3 tenths first-year ice including a trace of old ice in the extreme northwestern section.
- Elsewhere, 7-8 tenths first-year ice including a trace of old ice with areas of 9-9+ tenths first-year ice including a trace of old ice.
- Consolidated first-year ice with a trace of old ice near Clyde River southwards continuing to fracture.

July 25-31

- Bergy water in the extreme eastern section.
- Bergy water with patches of 4-6 tenths ice in the northwestern section.
- 1-3 tenths ice with areas of 7-8 tenths ice in the southwestern section.
- Patches of 7-8 tenths ice along parts of the coast in the southern section.

August 1-5

- 1-3 tenths ice with areas of 4-6 tenths ice along the coast in the extreme southwestern section.
- Elsewhere, bergy water.

August 6-15

- Bergy water with isolated patches of 1-3 tenths ice near the coast in the southern section.

Pond and Navy Board Inlets.

July 15-20

- 4-6 tenths first-year ice including a trace of old ice in Milne Inlet and the eastern entrance to Pond Inlet.
- 9-9+ tenths first-year ice including a trace of old ice in Eclipse Sound.
- Consolidated first-year ice including a trace of old ice fracturing in Navy Board Inlet.

July 21-26

- 7-8 tenths ice with areas of 9-9+ tenths ice in southern Navy Board Inlet.
- 4-6 tenths ice with patches of 7-8 tenths ice in Eclipse Sound and western Pond Inlet.
- Elsewhere, Bergy water with areas of 4-6 tenths ice.

July 27-August 3

- Ice melting completely to bergy water.

August 4-15

- Bergy water.

Admiralty Inlet.

July 15-19

- 4-6 tenths first-year ice with areas of 9-9+ tenths first-year ice in the southern section.
- Elsewhere, 9-9+ tenths first-year ice.

July 20-27

- Bergy water with areas of 1-3 tenths ice in the extreme northern and southern sections.
- Elsewhere, 4-6 tenths ice with patches of 7-8 tenths ice.

July 28-August 2

- 1-3 tenths ice with isolated areas of 4-6 tenths ice in the central section.
- Elsewhere, bergy water.

August 3-15

- Bergy water.

Lancaster Sound

July 15-31

- 1-3 tenths first-year ice including a trace of old ice with occasional areas of 4-6 tenths first-year ice including a trace of old ice in the extreme western and southeastern sections.
- Elsewhere, bergy water.

August 1-15

- Bergy water.

Barrow Strait.

July 15-20

- 9-9+ tenths first-year ice including a trace of old ice in the extreme western section.
- 7-8 tenths first-year in the central section.
- 1-3 tenths first-year ice in the eastern section.

July 21-26

- 7-8 tenths ice with areas of 9-9+ tenths ice in the western section.
- 1-3 tenths ice with areas of 4-6 tenths ice in the eastern section.

July 27-August 3

- 4-6 tenths ice with areas of 7-8 tenths ice in the extreme western section.
- Elsewhere, bergy water with areas of 1-3 tenths ice.

August 4-15

- 1-3 tenths ice with areas of 4-6 tenths ice in the extreme western section.
- Elsewhere, bergy water.

Prince Regent Inlet.

July 15-20

- 7-8 tenths first-year ice with areas of 9-9+ tenths first-year ice in the extreme southeastern section.
- Elsewhere, bergy water with isolated patches 1-3 tenths first-year ice near the parts of the coast.

July 21-31

- 4-6 tenths first-year ice in the extreme southeastern section.
- Elsewhere, bergy water with isolated patches 1-3 tenths ice from Lancaster Sound.

August 1-5

- 1-3 tenths ice in the extreme southeastern section.
- Elsewhere, bergy water with isolated patches of 1-3 tenths ice from Lancaster Sound.

August 6-15

- Bergy water.

Gulf of Boothia.

July 15-24

- Open water with isolated patches of 1-3 tenths first-year ice in Pelly Bay.
- 4-6 tenths first-year ice along parts of the western coast of Committee Bay.
- Elsewhere, 9-9+ tenths first-year ice.

July 25-August 5

- 7-8 tenths ice with areas of 9-9+ tenths ice in the northwestern section as well as in northern Committee Bay.
- 1-3 tenths ice with areas of 4-6 tenths ice in the southern part of Committee Bay.
- Open water in Pelly Bay.

August 6-15

- 1-3 tenths ice in the northwestern section as well as in northern Committee Bay.
- 4-6 tenths ice with areas of 7-8 tenths ice near the entrance to Fury and Hecla Strait.
- Bergy water in the southern part of Committee Bay.
- Ice free in Pelly Bay.

Wellington Channel.

July 15-19

- 4-6 tenths first-year ice with areas of 9-9+ tenths first-year ice in the southern third.
- Elsewhere, consolidated first-year ice beginning to fracture.

July 20-24

- 4-6 tenths ice with areas of 7-8 tenths ice in the southern third.
- Elsewhere, 9-9+ tenths ice.

July 25-31

- 1-3 tenths ice with areas of 4-6 tenths ice in the southern third.
- Elsewhere, 4-6 tenths ice with areas of 7-8 tenths ice.

August 1-5

- 1-3 tenths ice with areas of 4-6 tenths ice.

August 6-15

- Bergy water with patches of 1-3 tenths ice.

McDougall Sound.

July 15-21

- Consolidated first-year ice beginning to fracture in the southern section.
- Elsewhere, 1-3 tenths first-year ice with areas of 7-8 tenths first-year ice.

July 22-31

- 4-6 tenths ice with areas of 7-8 tenths ice.

August 1-5

- 1-3 tenths ice with areas of 7-8 tenths ice.

August 6-15

- 1-3 tenths ice with areas of 4-6 tenths ice.

Jones Sound.

July 15-21

- 1-3 tenths first-year ice with areas of 9-9+ tenths first-year ice in eastern section.
- 9-9+ tenths first-year ice in the western section
- 4-6 tenths first-year ice including a trace of old ice near the northwestern entrance to Jones Sound.
- Elsewhere, consolidated first-year ice continuing to fracture.

July 22-31

- Bergy water with areas of 1-3 tenths ice in the eastern section and in the extreme northwestern section.
- Elsewhere, 7-8 tenths ice.

August 1-5

- Bergy water with areas of 4-6 tenths ice mainly along parts of the coasts and in the central section.

August 6-15

- Bergy water with isolated patches of 1-3 tenths ice.

Norwegian Bay.

July 15-24

- Consolidated first-year ice beginning to fracture in the eastern section.
- Consolidated first-year ice including a trace of old ice beginning to fracture northwest of Graham Island.
- 7-8 tenths first-year ice including a trace of old ice areas of 9-9+ tenths first-year ice including a trace of old ice in the southwest of Graham Island.

July 25-31

- Consolidated ice continuing to fracture in northern and eastern sections.
- 4-6 tenths ice with areas of 9-9+ tenths ice in the southwestern section.

August 1-10

- Consolidated ice fracturing completely in the northern and eastern sections.
- Elsewhere, 4-6 tenths ice with areas of 9-9+ tenths ice.

August 11-15

- 4-6 tenths ice with areas of 9-9+ tenths ice.

Eureka Sound.

July 15-22

- Consolidated first-year ice beginning to fracture.

July 23-31

- Consolidated ice continuing to fracture in the northern and eastern sections.
- 7-8 tenths ice in the southern section.

August 1-5

- 1-3 tenths ice with areas of 7-8 tenths ice.

August 6-15

- Bergy water with areas of 4-6 tenths ice.

Western Kane Basin.

July 15-20

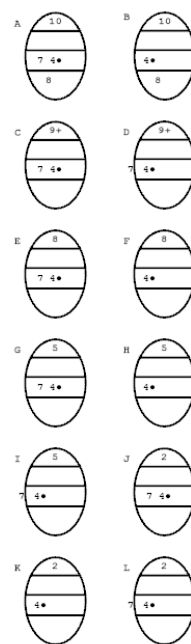
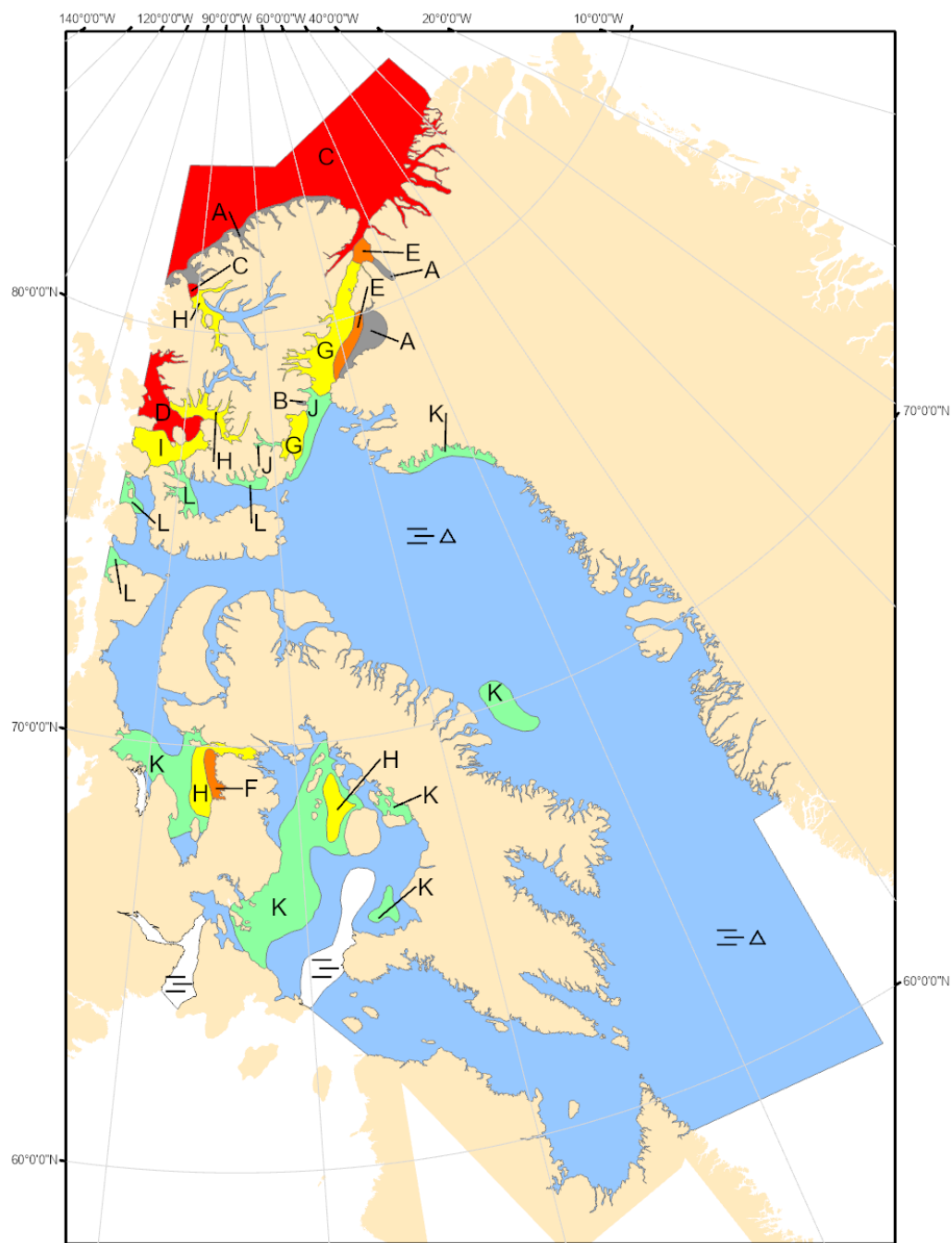
- 4-6 tenths first-year and old ice with areas of 9-9+ tenths first-year and old ice in the southern section.
- 4-6 tenths first-year and old ice with areas of consolidated first-year and old ice beginning to fracture in the northern section.

July 21-31

- 4-6 tenths ice with areas of 9-9+ tenths ice.

August 1-15

- 4-6 tenths ice with patches of 7-8 tenths ice.



COLOR CODES BASED ON TOTAL CONCENTRATION

ICE FREE	4-6 TENTHS	FAST ICE (TEN TENTHS)
LESS THEN 1 TENTH	7-8 TENTHS	ICE SHELF
1-3 TENTHS	9-10 TENTHS	UNDEFINED ICE

North American Ice Service /
Service des glaces de l'Amérique du Nord
ICE FORECAST - 30 DAY
PRÉVISIONS DES GLACES - 30 JOURS
VALID/VALIDE: 15 AUG/AOÛT 2025