

FECN16 CWIS 011800

THIRTY DAY ICE OUTLOOK FOR THE EASTERN AND NORTHERN ARCTIC FOR OCTOBER ISSUED BY ENVIRONMENT CANADA ON 1 OCTOBER 2025. THE NEXT 30 DAY OUTLOOK WILL BE ISSUED ON 15 OCTOBER 2025.

Summary for September 9- 21.

Average air temperatures were slightly above normal for all regions except near normal over Committee Bay. Ice extent is well below normal in Norwegian Bay and McDougal sound. Elsewhere, ice melt is near normal.

Weather forecast for October 1-31.

Air temperatures are forecast to be above normal over all forecast regions.

Northern Baffin Bay.

Oct 1-10

- 7-8 tenths new, grey, second-year and multi-year ice with areas of 9-9+ tenths second-year and multi-year ice in the extreme northwestern section along the coast of Ellesmere Island and near the entrance to Jones Sound.
- Bergy water with 1-3 tenths new and multi-year ice along the coast of Devon Island, near the entrance to Lancaster Sound and north of Bylot Island.
- Elsewhere, bergy water.

October 11-20

- 7-8 tenths new, grey, second-year and multi-year ice with areas of 9-9+ tenths new, grey, second-year and multi-year ice in the northwest section along the coast of Ellesmere Island towards Jones Sound
- 1-3 tenths new, grey, second-year ice with areas of 4-6 tenths new, grey, second-year and multi-year ice along the coast of Devon Island.
- Bergy water with occasional 1-3 tenths new, second-year and multi-year ice near the entrance to Lancaster Sound.
- Elsewhere, bergy water.

October 21-25

- 7-8 tenths new, grey, grey-white, second-year and multi-year ice with areas of 9-9+ tenths grey-white, second-year and multi-year ice in the northwestern section including along the coast of Devon Island.
- 4-6 tenths new, grey, second-year and multi-year ice in the northwestern section near the entrance to Lancaster Sound.
- Elsewhere, bergy water.

October 26-31

- 7-8 tenths new, grey, grey-white, second-year and multi-year ice with areas of 9-9+ tenths grey-white, second-year and multi-year ice in the northwestern section including along the coast of Devon Island.
- 4-6 tenths new, grey, second-year and multi-year ice with areas of 7-8 tenths new, grey, second-year and multi-year ice in the northwestern section near the entrance to Lancaster Sound.
- 1-3 tenths new ice along the ice edge and along parts of the coast in the southwestern section.

- Elsewhere, bergy water.

Southwestern Baffin Bay.

October 1-15

- Bergy water.

October 16-25

- Bergy water except areas of 1-3 tenths new ice along parts of the coast in the extreme northwestern section.

October 26-31

- Bergy water except areas of 1-3 tenths new ice along parts of the coast.

Pond and Navy Board Inlets.

October 1-15

- Bergy water.

October 16-25

- Bergy water with risk of occasional areas of 1-3 tenths multi-year ice near the entrance of Navy Board Inlet.
- Elsewhere, bergy water with areas of 1-3 tenths new ice forming along parts of the coasts.

October 26-31

- 1-3 tenths new ice with risk of occasional areas of 4-6 tenths new and multi-year ice near the entrance of Navy Board Inlet.

Admiralty Inlet.

October 1-20

- Bergy water.

October 21-31

- Bergy water with risk of occasional areas of 4-6 tenths new and multi-year ice near the entrance.
- Elsewhere, bergy water with areas of 1-3 tenths new ice forming along parts of the coasts.

Lancaster Sound

October 1-9

- Bergy water with areas of 1-3 tenths new and multi-year ice in the eastern section.
- Elsewhere, bergy water.

October 10-17

- Bergy water with areas of 1-3 tenths new and multi-year ice in the eastern section.
- 1-3 tenths new ice with areas of 4-6 tenths new, second-year and multi-year ice in the western section.

October 18-25

- 1-3 tenths new ice with areas of 4-6 tenths new and multi-year ice in the eastern section.
- 4-6 tenths new, grey, second-year and multi-year ice with areas of 7-8 tenths new, grey, second-year and multi-year ice in the extreme western section.

October 26-31

- 4-6 tenths new and multi-year ice in the eastern section.
- 7-8 tenths new, grey, second-year and multi-year ice in the western section.

Barrow Strait.

October 1-7

- Bergy water with areas of 1-3 tenths new, second-year and multi-year ice in the eastern section.
- 4-6 tenths new, second-year and multi-year ice with areas of 7-8 tenths new, grey, second-year and multi-year ice in the western section.

October 8-16

- 1-3 tenths new, second-year and multi-year ice with areas of 4-6 tenths new, grey, second-year and multi-year ice in the eastern section.
- 7-8 tenths new, grey, second-year and multi-year ice with areas of 9-9+ tenths new, grey, second-year and multi-year ice in the western section.

October 17-25

- 4-6 tenths new, grey, second-year and multi-year ice in the eastern section.
- 9-9+ tenths new, grey, second-year and multi-year ice in the western section.

October 26-31

- 7-8 tenths new, grey, second-year and multi-year ice in the eastern section.
- 9-9+ tenths grey, grey-white, second-year and multi-year ice in the western section.

Prince Regent Inlet.

October 1-20

- Bergy water with occasional areas of 1-3 second-year ice in the extreme southeastern section.

October 21-31

- Bergy water with occasional areas of 1-3 tenths new ice.

Gulf of Boothia.

October 1-20

- Ice free in Pelly Bay.
- Bergy water with occasional areas of 1-3 tenths second-year ice near Fury and Hecla Strait and in eastern Committee Bay

October 21-31

- Open water in Pelly Bay
- Elsewhere, bergy water with occasional areas of 1-3 tenths new ice.

Wellington Channel.

October 1-10

- Bergy water with occasional areas of 1-3 tenths multi-year ice.

October 11-20

- 1-3 tenths new and multi-year ice with areas of 4-6 tenths new and multi-year ice in the northwestern section.
- Elsewhere, bergy water with areas of 1-3 tenths new and multi-year ice.

October 21-31

- 7-8 tenths new, grey and multi-year ice.

McDougall Sound.

October 1-10

- 4-6 tenths new, second-year and multi-year ice with areas of 7-8 tenths new, grey, second-year and multi-year ice.

October 11-21

- 7-8 tenths new, grey, second-year and multi-year ice.

October 21-31

- 9-9+ tenths grey, grey-white, second-year and multi-year ice in the northern section.
- Elsewhere, 9-9+ tenths grey, second-year and multi-year ice.

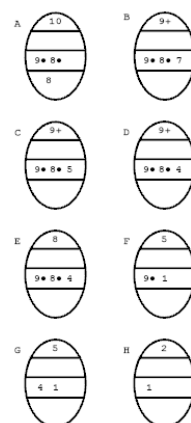
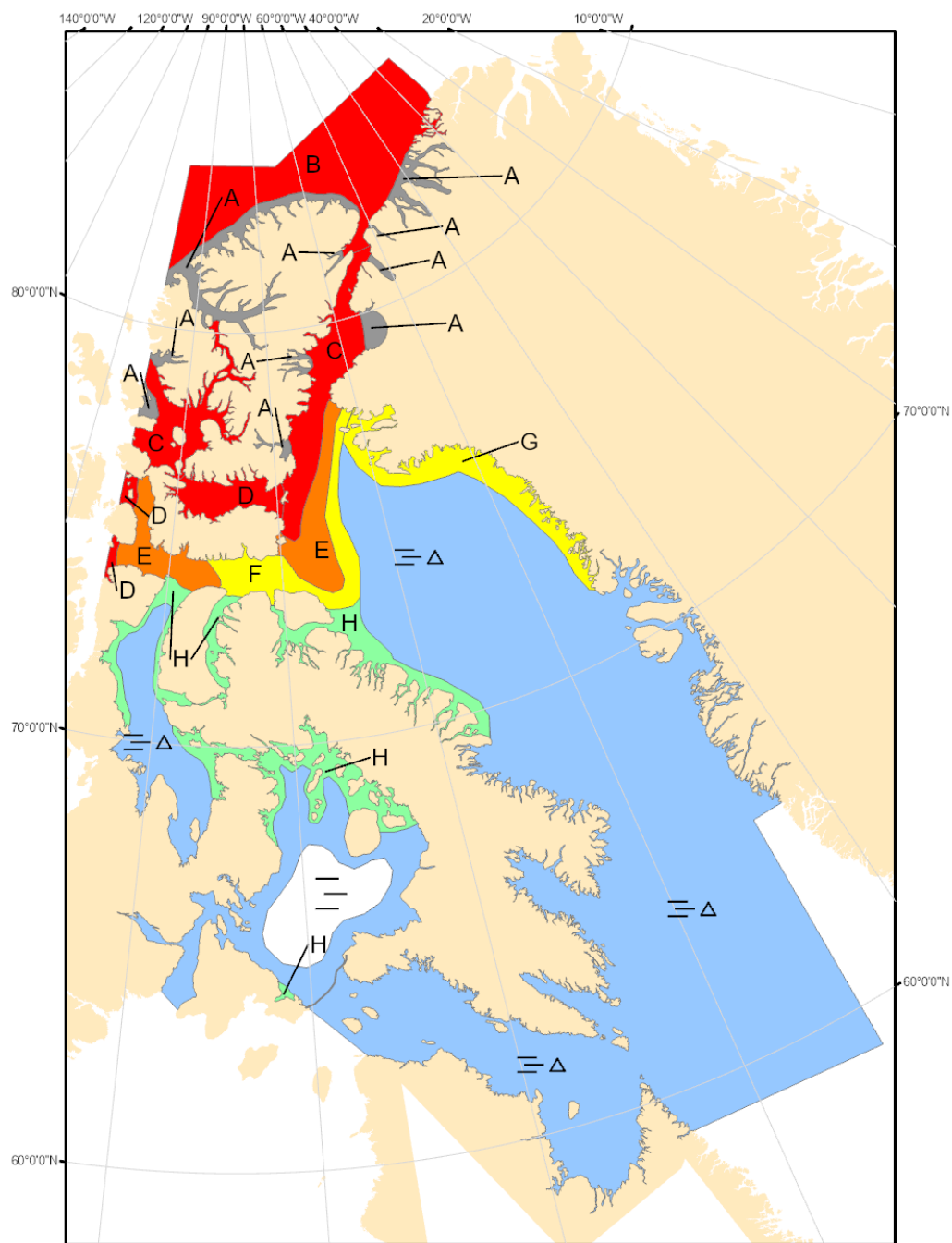
Jones Sound.

Norwegian Bay.

Eureka Sound.

Western Kane Basin.

Forecasts have ended for the season.



COLOR CODES BASED ON TOTAL CONCENTRATION

ICE FREE	4-6 TENTHS	FAST ICE (TEN TENTHS)
LESS THEN 1 TENTH	7-8 TENTHS	ICE SHELF
1-3 TENTHS	9-10 TENTHS	UNDEFINED ICE

North American Ice Service /
Service des glaces de l'Amérique du Nord
ICE FORECAST - 30 DAY
PRÉVISIONS DES GLACES - 30 JOURS
VALID/VALIDE: 31 OCT/OCT 2025