

FECN15 CWIS 151800

THIRTY DAY ICE OUTLOOK FOR HUDSON AND FOXE FOR MID-JULY TO MID-AUGUST
ISSUED BY ENVIRONMENT CANADA ON 15 JULY 2024.

THE NEXT 30 DAY OUTLOOK WILL BE ISSUED ON 30 JULY 2024.

Summary for July 1 to 12.

Average air temperatures have been above normal over the Labrador coast, Ungava Bay, Hudson Bay and James Bay except over northeastern Hudson Bay where temperatures were below normal. Elsewhere, temperatures have been below normal. Ice melt is around 2 weeks earlier than normal over eastern and central Hudson Bay and James Bay, and around 1-2 weeks later than normal over northwestern Hudson Bay. Ice melt is around 2 weeks earlier in Hudson Strait, Davis Strait and Foxe Basin. Ice melt in the northern Labrador sea is about 1 week earlier than normal.

Weather forecast for July 15 to August 15.

Air temperatures are forecast to be above normal values over eastern Hudson Bay, Foxe Basin and most of Hudson Strait. Air temperatures are forecast to be below normal values over western Hudson Bay, western Hudson Strait and portions of Davis Strait. Elsewhere, air temperatures are forecast to be near normal.

Southern Labrador Coast.

July 15-August 15

- Bergy water.

Northern Labrador Coast.

July 15-18

- Bergy water except occasional areas of 1-3 tenths first-year ice including a trace of old ice in the extreme northwestern section.

July 19-August 15

- Bergy water.

Lake Melville.

July 15-August 15

- Ice free.

Southern Davis Strait.

July 15-19

- 7-8 tenths first-year ice including a trace of old ice with areas of 9-9+ tenths first-year ice including 1 tenth old ice in the extreme northwestern section.

- Bergy water except areas of 4-6 tenths first-year ice including a trace of old ice in the southwestern section.

- Elsewhere, bergy water with occasional areas of 1-3 tenths first-year ice including a trace of old ice in the extreme northern section.

July 20-27

- 4-6 tenths ice with areas of 7-8 tenths ice in the extreme northwestern section.
- Bergy water with areas of 1-3 tenths ice in the southwestern section.
- Elsewhere, bergy water.

July 28-31

- Bergy water except for areas 4-6 tenths ice in the extreme northwestern section.
- Elsewhere, bergy water.

August 1-5

- Ice melting completely to bergy water.

August 6-15

- Bergy water.

Northern Davis Strait.

July 15-27

- 7-8 tenths first-year ice including 1 tenth old ice with areas of 9-9+ tenths first-year ice including 1 tenth old ice in the northwestern section and extreme southwestern section.
- 1-3 tenths first-year ice including 1 tenth old ice with areas of 4-6 tenths first-year ice including 1 tenth old ice in the central section.
- Bergy water in the extreme eastern section.
- Consolidated first-year ice including a trace of old ice along parts of the coast continuing to fracture.

July 28-August 3

- 4-6 tenths ice with areas of 7-8 tenths ice in the western section.
- Bergy water with areas of 1-3 tenths ice in the central section.
- Bergy water in extreme eastern section.
- Consolidated ice along parts of the coast continuing to fracture.

August 4-11

- 1-3 tenths ice with areas of 4-6 tenths ice in the western section.
- Bergy water with occasional areas of 1-3 tenths ice in the central section.
- Bergy water in the extreme eastern section.

August 12-15

- Bergy water with areas of 1-3 tenths ice in the western section.

Frobisher Bay.

July 15-18

- Bergy water with occasional areas of 1-3 tenths first-year ice including a trace of old ice in the extreme eastern section.

July 19-31

- Bergy water.

August 1-15

- Bergy water.

Cumberland Sound.

July 15-21

- Bergy water with areas occasional areas of 1-3 tenths first-year ice in the extreme western section.
- Elsewhere, 4-6 tenths first-year ice including a trace of old ice with areas of 7-8 tenths first-year ice including a trace of old ice.

July 22-31

- Bergy water with areas of 4-6 tenths ice.

August 1-15

- Bergy water with occasional areas of 1-3 tenths ice.

Hudson Strait.

July 15-20

- Bergy water with occasional areas of 1-3 tenths first-year ice including a trace of old ice in the extreme southeastern section.
- 1-3 tenths first-year ice with areas of 9-9+ tenths first-year ice in the extreme western section.
- Elsewhere, bergy water.

July 21-26

- Bergy water except areas of 4-6 tenths ice in the extreme western section.

After July 26

- Ice melting completely to bergy water.

August 1-15

- Bergy water.

Ungava Bay.

July 15-18

- Bergy water with occasional areas of 1-3 tenths first-year ice including a trace of old ice in the eastern section.

July 19-31

- Bergy water.

August 1-15

- Bergy water.

Foxe Basin.

July 15-24

- Open water with areas of 1-3 tenths first-year ice along the consolidated ice edge in the extreme northwestern section.
- Open water to ice free northwest of Southampton Island.
- 1-3 tenths first-year ice with areas of 4-6 tenths first-year ice from Prince Charles Island to southeastern Foxe Basin.
- Elsewhere, 7-8 tenths ice first-year with areas of 9-9+ tenths first-year ice.
- Consolidated first-year ice continuing to fracture.

July 25-30

- 1-3 tenths ice with areas of 4-6 tenths ice in the northern section and in Fury and Hecla Strait.
- Open water to ice free northwest of Southampton Island.
- Open water with areas of 1-3 tenths ice from Prince Charles Island to southeastern Foxe Basin.
- Elsewhere, 7-8 tenths ice with areas of 9-9+ tenths ice.

July 31-August 5

- Open water with areas of 1-3 tenths ice in the northern section and in Fury and Hecla Strait.
- Ice free northwest of Southampton Island.
- Open water with occasional areas of 1-3 tenths ice from Prince Charles Island to southeastern Foxe Basin.
- Elsewhere, 4-6 tenths ice with areas of 7-8 tenths ice.

August 6-15

- Open water with areas of 1-3 tenths ice in the northeastern and southwestern sections and Fury and Hecla Strait
- Elsewhere, open water to ice free.

Northwestern Hudson Bay.

July 15-22

- 1-3 tenths first-year ice except 9-9+ tenths first-year ice in the southwestern section.
- Open water with areas of 1-3 tenths first-year along western coast of Hudson Bay.

July 23-30

- 4-6 tenths ice with areas of 7-8 tenths ice in the southwestern section.
- Elsewhere, open water to ice free.

July 31-August 8

- Ice melting completely to open water or ice free.

August 9-15

- Open water to ice free.

Eastern Hudson Bay – James Bay.

July 15-20

- Ice free except open water near cape Henrietta Maria and bergy water in the extreme northern section.

July 21-August 15

- Ice free except bergy water in the extreme northern section.

Southwestern Hudson Bay.

July 15-20

- Open water to ice free in the northern section.
- 7-8 tenths first-year ice in the southeastern section.
- 9-9+ tenths first-year ice in the southwestern section.
- 1-3 tenths first-year ice along the southern coast.

July 21-28

- Open water to ice free in the northern section and along the southern coast.
- 1-3 tenths ice with areas of 4-6 tenths ice in the southeastern section.

- 4-6 tenths ice with areas of 7-8 tenths ice in the southwestern section.

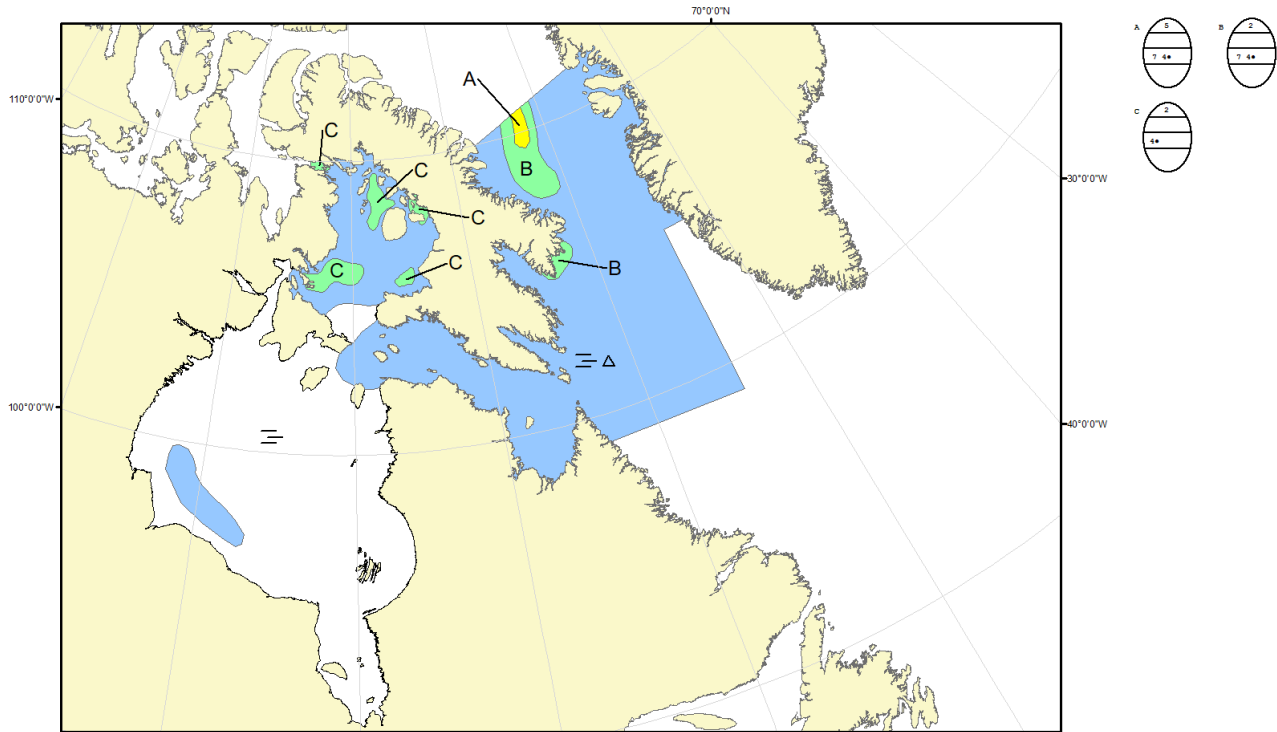
July 29-August 3






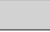



- Ice free in the northern section and along the southern coast.

- Open water with areas of 1-3 tenths ice in the southern section.

August 4-15

- Open water to ice free.



COLOR CODES BASED ON TOTAL CONCENTRATION					
	ICE FREE		4-6 TENTHS		FAST ICE (TEN TENTHS)
	LESS THEN 1 TENTH		7-8 TENTHS		ICE SHELF
	1-3 TENTHS		9-10 TENTHS		UNDEFINED ICE

North American Ice Service /
 Service des glaces de l'Amérique du Nord
 ICE FORECAST - 30 DAY
 PRÉVISIONS DES GLACES - 30 JOURS
 VALID/VALIDE: 15 AUG/AOÛT 2024