

FECN15 CWIS 151800

THIRTY DAY ICE OUTLOOK FOR HUDSON AND FOXE FOR MID-OCTOBER TO MID-NOVEMBER ISSUED BY ENVIRONMENT CANADA ON 15 OCTOBER 2024.

THE NEXT 30 DAY OUTLOOK WILL BE ISSUED ON 1 NOVEMBER 2024.

Summary for October 1 to 12.

Average air temperatures have been slightly above to significantly above normal for all regions except over extreme southwestern Hudson Bay where average air temperatures have been near to below normal. Ice free to open water conditions prevail over all forecast regions and freeze-up is around 2 weeks slower than normal in Fury and Hecla Strait.

Weather forecast for mid-October to mid-November.

Air temperatures are forecast to be above normal values over all areas.

Southern Labrador Coast

Northern Labrador Coast.

October 15-November 15

- Bergy water.

Lake Melville.

October 15-31

- Ice free.

November 1-15

- Open water.

Southern Davis Strait.

October 15-November 8

- Bergy water.

November 9-15

- Bergy water except 1-3 tenths new ice along parts of the coast in the extreme northwestern section.

Northern Davis Strait.

October 15-31

- Bergy water.

November 1-10

- Bergy water except 1-3 tenths new ice forming along parts of the coast.

November 11-15

- Bergy water with areas of 4-6 tenths new and grey ice along parts of the coast.

- 1-3 tenths new ice in the extreme northwestern section.

Frobisher Bay.

October 15-November 4

- Bergy water.

November 5-15

- Bergy water except 4-6 tenths new ice along parts of the coast.

Cumberland Sound.

October 15-31

- Bergy water.

November 1-15

- Bergy water except 4-6 tenths new ice along parts of the coast.

Hudson Strait.

October 15-November 5

- Bergy water.

November 6-15

- Bergy water except 4-6 tenths new ice along parts of the coasts.

Ungava Bay.

October 15-November 5

- Bergy water.

November 6-15

- Bergy water except 4-6 tenths new ice along parts of the coasts.

Foxe Basin.

October 15-18

- Open water to ice free with occasional areas of 1-3 tenths new ice along parts of the coasts and in sheltered bays in the northern and eastern sections.
- Bergy water with occasional areas of 1-3 tenths new and second-year ice in Fury and Hecla Strait.

October 19-22

- Open water to ice free with areas of 4-6 tenths new ice along parts of the coasts and in sheltered bays in the northern and eastern sections.
- 4-6 tenths new and second-year ice in Fury and Hecla Strait.

October 23-31

- Open water to ice free with areas of 9-9+ tenths new and grey ice along the coasts and in sheltered bays in the northern and eastern sections.
- 7-8 tenths new, grey and second-year ice in Fury and Hecla Strait.
- Elsewhere, open water to ice free with areas of 1-3 tenths new ice along parts of the coasts and in sheltered bays.

November 1-7

- 4-6 tenths new and grey ice with areas of 9-9+ tenths new, grey and grey-white ice in the eastern and northern sections.
- 9-9+ tenths grey, grey-white and second-year ice in Fury and Hecla Strait.
- Elsewhere, ice free to open water with areas of 4-6 tenths new and grey ice along the coasts.

November 8-15

- 7-8 tenths grey and grey-white ice with areas of 9-9+ tenths grey and grey-white ice in the northern and eastern sections.
- 9-9+ tenths grey, grey-white and second-year ice in Fury and Hecla Strait.
- Consolidated grey-white ice along parts of the coasts in the northern and eastern sections and in Fury and Hecla Strait.
- Elsewhere, open water with areas of 9-9+ tenths new and grey ice along the coasts.

Northwestern Hudson Bay.

October 15-22

- Ice free except bergy water in the extreme northeastern section.

October 23-31

- Ice free except open water with areas of 1-3 tenths new ice forming along parts of the coasts of Southampton Island.
- Bergy water in the extreme northeastern section.

November 1-7

- Ice free except open water with areas of 4-6 tenths new ice along the mainland coasts.
- Open water with areas of 9-9+ tenths new and grey ice along parts of the coasts of Southampton Island.
- Bergy water in the extreme northeastern section.

November 8-15

- Ice free except open water with areas of 9-9+ tenths new and grey ice along parts of the coasts.
- Bergy water in the extreme northeastern section.

Eastern Hudson Bay – James Bay.

October 15-27

- Ice free except bergy water in the extreme northern section.

October 28-31

- Ice free except open water along parts of the coasts.
- Bergy water in the extreme northern section.

November 1-15

- Ice free except open water with areas of 1-3 tenths new ice along parts of the coasts.

Southwestern Hudson Bay.

October 15-25

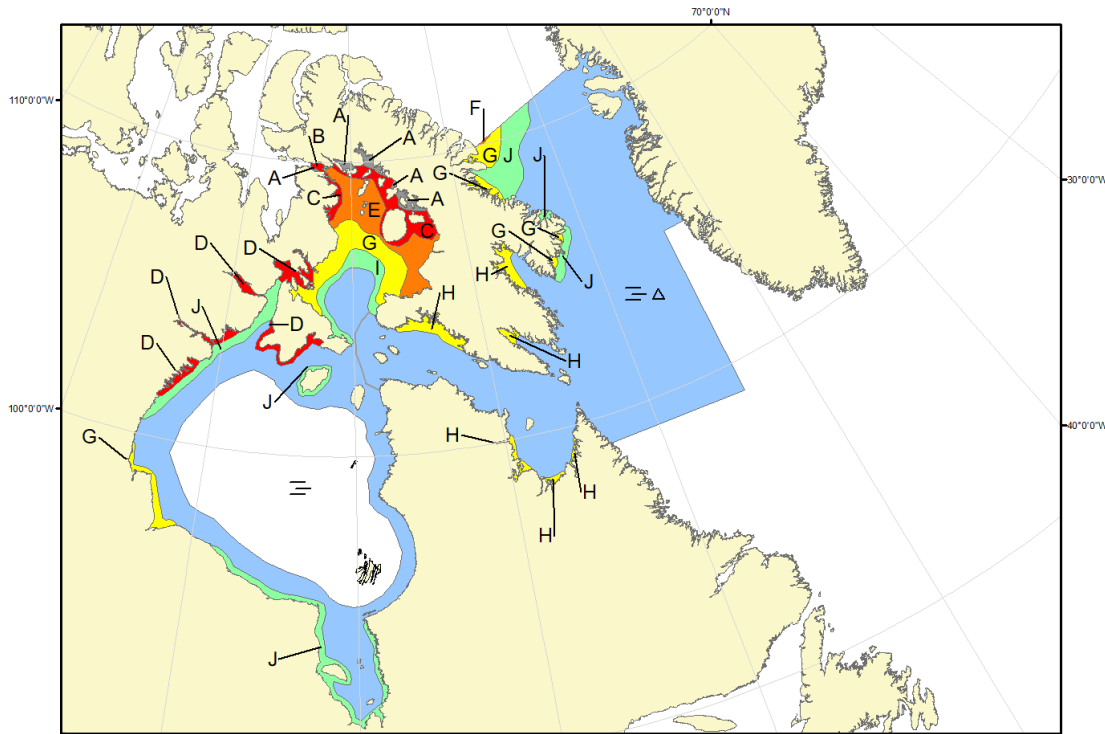
- Ice free.

October 26-31




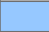





- Ice free except open water with areas of 1-3 tenths new ice forming along parts of the coasts.

November 1-15

- Ice free except open water with areas of 4-6 tenths new and grey ice along parts of the coasts.



COLOR CODES BASED ON TOTAL CONCENTRATION

	ICE FREE		4-6 TENTHS		FAST ICE (TEN TENTHS)
	LESS THEN 1 TENTH		7-8 TENTHS		ICE SHELF
	1-3 TENTHS		9-10 TENTHS		UNDEFINED ICE

**North American Ice Service /
Service des glaces de l'Amérique du Nord
ICE FORECAST - 30 DAY
PRÉVISIONS DES GLACES - 30 JOURS
VALID/VALIDE: 15 NOV/NOV 2024**