

FECN15 CWIS 021800

THIRTY DAY ICE OUTLOOK FOR HUDSON AND FOXE FOR DECEMBER ISSUED BY ENVIRONMENT CANADA ON 02 DECEMBER 2024. THIS IS THE LAST FORECAST BULLETIN FOR THE SEASON.

Summary for November 15 to 29.

Average air temperatures have been slightly above to significantly above normal for all regions. Freeze-up is around 2-3 weeks slower than normal for all regions.

Weather forecast for December.

Air temperatures are forecast to be above normal values over all areas.

Southern Labrador Coast.

December 2-15

- Bergy water except 1-3 tenths new ice along the coast in sheltered bays in the northwestern section.

December 16-31

- Bergy water except 1-3 tenths new ice along parts of the coast.
- 9-9+ tenths new and grey ice in sheltered bays in the northwestern section.

Northern Labrador Coast.

December 2-9

- Bergy water except areas of 1-3 tenths new ice along parts of the coast.
- 4-6 tenths new and grey ice in sheltered bays along parts of the coast.

December 10-22

- Bergy water except areas of 1-3 tenths new and grey ice along parts of the coast.
- 9-9+ tenths new and grey ice in sheltered bays along the coast.

December 23-31

- Bergy water except areas of 4-6 tenths new and grey ice along parts of the coast.
- Consolidated grey ice along the coast in sheltered bays.

Lake Melville.

December 2-6

- Open water with areas of 1-3 tenths new ice along the coasts.

December 7-11

- 4-6 tenths new ice except 9-9+ tenths new and grey ice in the extreme western section.

December 12-18

- 4-6 tenths grey ice except consolidated grey-white ice in the extreme western section.

After December 18

- 9-9+ tenths grey and grey-white ice except consolidated grey-white ice in the extreme western section.

Southern Davis Strait.

December 2-9

- Bergy water except areas of 4-6 tenths new ice along parts of the coast.

December 10-18

- Bergy water except 4-6 tenths new and grey ice along the coast.

December 19-25

- 9-9+ tenths new and grey ice in the northwestern section except 9-9+ tenths grey and grey-white ice in the extreme northwestern section.
- 7-8 tenths new and grey ice in the southwestern section.
- Elsewhere, bergy water.

December 26-31

- 9-9+ tenths grey and grey-white ice in the western section except 9-9+ tenths grey-white and first-year ice in the extreme northwestern section.
- Bergy water with areas of 4-6 tenths new and grey ice in the northeastern section.
- Bergy water in the southeastern section.

Northern Davis Strait.

December 2-9

- 9-9+ tenths grey and grey-white ice in the northwestern section.
- 7-8 tenths new and grey ice with areas of 9-9+ tenths new and grey ice along the coast in the southwestern section.
- 4-6 tenths new ice in the northeastern section.
- Bergy water in the extreme southeastern section.
- Consolidated grey ice along parts of the coast.

December 10-18

- 9-9+ tenths grey and grey-white ice in the western section.
- 9-9+ tenths new and grey in the extreme southwestern section.
- 7-8 tenths new and grey ice in the northeastern section.
- 1-3 tenths new ice in the southeastern section.
- Consolidated grey-white ice along parts of the coast.

December 19-25

- 9-9+ tenths grey-white and first-year ice including a trace of multi-year ice in the northwestern section.
- 9-9+ tenths grey and grey-white ice in the southwestern section.
- 7-8 tenths grey and grey-white ice in the northeastern section.
- 1-3 tenths new and grey ice in the southeastern section.
- Consolidated first-year ice along parts of the coast.

December 26-31

- 9-9+ tenths first-year ice including a trace of multi-year ice in the northwestern section.
- 9-9+ tenths grey-white and first-year ice in the southwestern section.
- 7-8 tenths grey and grey-white ice in the northeastern section.
- 4-6 tenths grey and grey-white ice in the southwestern section.
- Consolidated first-year ice along parts of the coast.

Frobisher Bay.

December 2-9

- Bergy water except 4-6 tenths new and grey ice along parts of the coasts.
- Consolidated grey ice along parts of the coast in the western section.

December 10-18

- 4-6 tenths new and grey ice.
- Consolidated grey-white ice along parts of the coast in the western section.

December 19-25

- 7-8 tenths new and grey ice.
- Consolidated grey-white ice along parts of the coast in the western section.

December 26-31

- 9-9+ tenths grey and grey-white ice.
- Consolidated grey-white ice along parts of the coast.

Cumberland Sound.

December 2-9

- Bergy water except 4-6 tenths new and grey ice along parts of the coast.
- Consolidated grey ice along parts of the coast.

December 10-18

- 4-6 tenths new and grey ice.
- Consolidated grey-white ice along parts of the coast.

December 19-25

- 7-8 tenths new and grey ice.
- Consolidated grey-white ice along parts of the coast.

December 26-31

- 9-9+ tenths grey and grey-white ice.
- Consolidated grey-white and first-year ice along parts of the coast.

Hudson Strait.

December 2-9

- Bergy water with areas of 1-3 tenths new ice along the coasts.
- 9-9+ tenths new and grey ice in a few sheltered bays along the coast in the northern section.

December 10-18

- Bergy water with areas of 1-3 tenths new and grey ice.
- 4-6 tenths new and grey ice with areas of 9-9+ tenths grey and grey-white ice in the extreme western section.
- 7-8 tenths new and grey ice along the northwestern coast.
- Consolidated grey ice along parts of the northern coast.

December 19-25

- 7-8 tenths new and grey ice in the western section except 9-9+ tenths grey and grey-white ice in the extreme western section.
- Bergy water with areas of 4-6 tenths new ice in the eastern section.
- 9-9+ tenths new and grey ice along the northwestern coast.
- Consolidated grey-white ice along parts of the northern coast.
- Consolidated grey ice along parts of the southern coast in sheltered bays.

December 26-31

- 9-9+ tenths grey and grey-white ice in the western section.
- 4-6 tenths new and grey ice in the eastern section except 9-9+ tenths grey and grey-white ice in the extreme northeastern section.

- Consolidated grey-white ice along parts of the coasts in the western section.

Ungava Bay.

December 2-7

- Bergy water except 1-3 tenths new and grey ice along parts of the coast.

December 8-15

- 7-8 tenths new and grey ice along the coast.
- Elsewhere, bergy water.
- Consolidated grey ice in sheltered bays along the coast.

December 16-24

- 7-8 tenths new and grey ice with areas of 9-9+ tenths grey and grey-white ice along the coast.
- Elsewhere, bergy water with areas of 1-3 tenths new and grey ice.
- Consolidated grey-white ice in sheltered bays along parts of the coast.

December 25-31

- 9-9+ tenths grey and grey-white ice along the coast.
- Elsewhere, 4-6 tenths new and grey ice.
- Consolidated grey-white ice in sheltered bays along parts of the coast.

Northwestern Hudson Bay.

December 2-7

- 9-9+ tenths grey and grey-white ice along the coasts.
- Bergy water with areas of 4-6 tenths new and grey ice in the extreme northeastern section.
- Elsewhere open water with areas of 4-6 tenths new ice.
- Consolidated grey-white ice in sheltered bays along parts of the coasts.

December 8-16

- 9-9+ tenths grey and grey-white ice along most of the coasts.
- Bergy water with areas of 7-8 tenths new and grey ice in the extreme northeastern section.
- Elsewhere, 4-6 tenths new ice with areas of 9-9+ tenths new and grey ice.
- Consolidated grey-white ice along parts of the coasts.

December 17-24

- 9-9+ tenths grey-white and first-year ice along the coast in the western section.
- Elsewhere, 9-9+ tenths grey and grey-white ice.
- Consolidated first-year ice along most of the coasts.

December 25-31

- 9-9+ tenths grey-white and first-year ice except 9-9+ tenths new, grey and grey-white ice along parts of the coasts.
- Consolidated first-year ice along most of the coasts.

Eastern Hudson Bay – James Bay.

December 2-9

- Open water with areas of 1-3 tenths new ice along the coast in the northern section.
- Open water with areas of 4-6 tenths new and grey ice along parts of the coast in James Bay.

- Bergy water in the extreme northern section.
- Consolidated grey ice in a few sheltered bays in the northern section.

December 10-18

- Open water except 1-3 tenths new and grey ice along parts of the coasts except 1-3 tenths new ice with areas of 9-9+ tenths new and grey ice along the coasts in James Bay.
- Bergy water with areas of 4-6 tenths new and grey ice in the extreme northern section.
- Consolidated grey-white ice in a few sheltered bays in the northern section.

December 19-24

- Open water except areas of 9-9+ tenths new and grey ice along parts of the coast.
- 7-8 tenths grey and grey-white ice in the extreme northern section.
- 4-6 tenths new and grey ice with areas of 9-9+ tenths grey and grey-white ice along the coasts of James Bay.
- Consolidated grey-white ice along parts of the coasts.

December 25-31

- 9-9+ tenths new, grey and grey-white ice in James Bay.
- Elsewhere, 9-9+ tenths grey and grey-white ice except 4-6 tenths new and grey ice in the southeastern section.
- Consolidated grey-white ice along parts of the coasts.

Southwestern Hudson Bay.

December 2-6

- 9-9+ tenths new and grey ice along the coast in the southwestern section.
- 7-8 tenths new ice along the coast in the southeastern section.
- Elsewhere, open water to ice free.

December 7-13

- 9-9+ tenths new and grey ice along the coast in the southern section.
- Elsewhere, open water with areas of 4-6 tenths new ice.
- Consolidated grey ice along parts of the coast in the southern section.

December 14-21

- 9-9+ tenths grey and grey-white ice along the coast in the southern section.
- 7-8 tenths new and grey ice in the western section.
- 4-6 tenths new and grey ice in the eastern section.
- Consolidated grey-white ice along parts of the coast in the southern section.

December 22-28

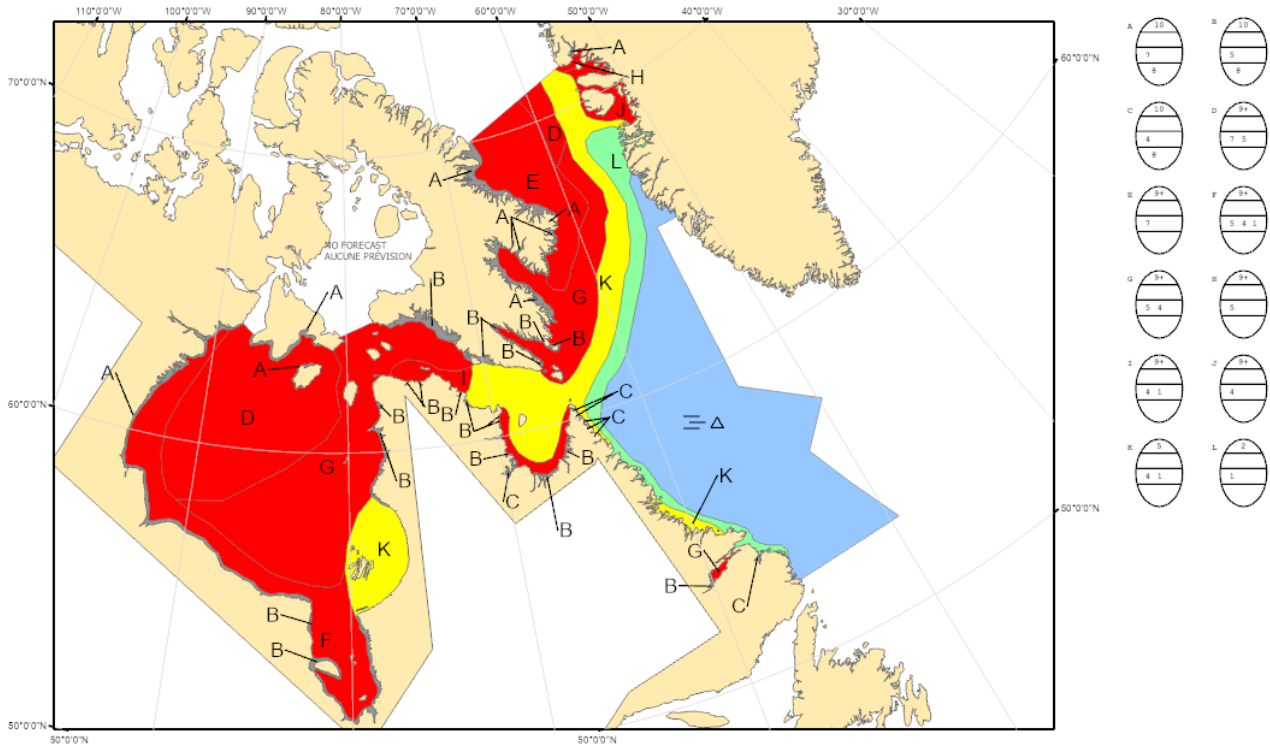
- 9-9+ tenths grey and grey-white ice along the coast in the southern section and in the western section.
- Elsewhere, 7-8 tenths new and grey ice.
- Consolidated grey-white ice along parts of the coast in the southern section.

After December 28

- 9-9+ tenths grey-white and first-year ice in the western section.
- 9-9+ tenths new, grey and grey-white ice along the coast in the southern section.
- Elsewhere, 9-9+ tenths grey and grey-white ice.
- Consolidated first-year ice along parts of the coast in the southern section.

Foxe Basin.

Forecasts have ended for the season.



COLOR CODES BASED ON TOTAL CONCENTRATION

| | | |
|-------------------|-------------|-----------------------|
| ICE FREE | 4-6 TENTHS | FAST ICE (TEN TENTHS) |
| LESS THEN 1 TENTH | 7-8 TENTHS | ICE SHELF |
| 1-3 TENTHS | 9-10 TENTHS | UNDEFINED ICE |

North American Ice Service /
 Service des glaces de l'Amérique du Nord
ICE FORECAST - 30 DAY
PRÉVISIONS DES GLACES - 30 JOURS
 VALID/VALIDE: 31 DEC/DÉC. 2024