

FECN15 CWIS 011800

THIRTY DAY ICE OUTLOOK FOR HUDSON AND FOXE FOR JULY ISSUED BY ENVIRONMENT CANADA ON 1 JULY 2025.

THE NEXT 30 DAY OUTLOOK WILL BE ISSUED ON 15 JULY 2025.

Summary for June 15 to 27.

Average air temperatures were below normal over all forecast regions except near normal for northern Davis Strait. Ice melt is near normal except around 1-2 weeks faster than normal in western Hudson Bay, Hudson Strait and southern Foxe Basin and around 1 week slower than normal in eastern Hudson Bay and in the Labrador Sea.

Weather forecast for July 1-31.

Air temperatures are forecast to be above normal in Foxe Basin and western Hudson Bay and Hudson Strait and near to below normal elsewhere.

Southern Labrador Coast.

July 1-3

- Bergy water with occasional areas of 1-3 tenths first-year ice including a trace of old ice along the coast in the extreme northwestern section.

July 4-31

- Bergy water.

Northern Labrador Coast.

July 1-5

- In the southern section, south of Nain, within 40-60 nautical miles of the coast, bergy water with occasional areas of 1-3 tenths first-year ice including a trace of old ice.
- In the northern section, within 60-80 nautical miles of the coast, 1-3 tenths first-year ice including a trace of old ice with areas of 7-8 tenths ice.
- Elsewhere, bergy water.

July 6-15

- In the southern section, bergy water.
- In the northern section, bergy water with areas of 1-3 tenths ice within 40-60 nautical miles of the coast.

July 16-31

- Bergy water.

Lake Melville.

July 1-31

- Ice free.

Southern Davis Strait.

July 1-7

- 9-9+ tenths first-year ice including a trace of old ice in the northwestern section.
- 7-8 tenths first-year ice including a trace of old ice with areas of 9-9+ tenths first-year ice including a trace of old ice in the southwestern section.

- Elsewhere, bergy water.
- Consolidated first-year ice along the coast beginning to fracture.

July 8-14

- 7-8 tenths ice with areas of 9-9+ tenths ice in the northwestern section.
- 4-6 tenths ice with areas of 7-8 tenths ice in the southwestern section.
- Elsewhere, bergy water.
- Consolidated ice continuing to fracture.

July 15-21

- 4-6 tenths ice with areas of 7-8 tenths ice in the northwestern section.
- 1-3 tenths ice with areas of 4-6 tenths ice in the southwestern section.
- Elsewhere, bergy water.
- Consolidated ice continuing to fracture.

July 22-27

- 1-3 tenths ice with areas of 4-6 tenths ice in the northwestern section.
- Bergy water with areas of 1-3 tenths ice in the southwestern section.
- Elsewhere, bergy water.
- Consolidated ice continuing to fracture.

July 28-31

- Bergy water with areas of 1-3 tenths ice in the western section.
- Elsewhere, bergy water.

Northern Davis Strait.

July 1-7

- Bergy water in the extreme eastern section.
- Elsewhere, 9-9+ tenths first-year ice including a trace of old ice.
- Consolidated first-year ice including a trace of old ice along the coast.

July 8-14

- Bergy water in the extreme eastern section.
- 7-8 tenths ice with areas of 9-9+ tenths ice in the southwestern section.
- 9-9+ tenths ice in the northwestern section.
- Consolidated ice beginning to fracture.

July 15-27

- Bergy water in the extreme eastern section.
- 4-6 tenths ice with areas of 7-8 tenths ice in the western section.
- Consolidated ice continuing to fracture.

July 28-31

- Bergy water in the eastern section.
- 1-3 tenths ice with areas of 4-6 tenths ice in the southwestern section.
- 4-6 tenths ice with occasional areas of 7-8 tenths ice in the northwestern section.

Frobisher Bay.

July 1-6

- 7-8 tenths first-year ice including a trace of old ice with areas of 9-9+ tenths first-year ice including a trace of old ice.
- Consolidated first-year ice along the coasts continuing to fracture.

July 7-12

- 4-6 tenths ice with areas of 7-8 tenths ice.
- Consolidated ice along the coasts continuing to fracture.

July 13-27

- Bergy water with areas of 4-6 tenths ice in the eastern section.

July 28-31

- Bergy water.

Cumberland Sound.

July 1-7

- Bergy water with areas of 1-3 tenths first-year ice including a trace of old ice except 7-8 tenths first-year ice including a trace of old ice with areas of 9-9+ tenths first-year ice including a trace of old ice in the eastern section.
- Consolidated first-year ice along the coasts continuing to fracture.

July 8-14

- Bergy water with areas of 1-3 tenths ice except 4-6 tenths ice with areas of 7-8 tenths ice near the eastern entrance.

July 15-31

- Bergy water with areas of 1-3 tenths ice in the extreme eastern section.

Hudson Strait.

July 1-10

- 1-3 tenths first-year ice including a trace of old ice in the extreme eastern section.
- Bergy water with areas of 1-3 tenths first-year ice along the coasts in the western and central sections.
- Elsewhere, bergy water.
- Consolidated first-year ice along the coasts continuing to fracture.

July 11-19

- Bergy water except occasional areas of 1-3 tenths ice.

July 20-31

- Bergy water.

Ungava Bay.

July 1-5

- Bergy water with areas of 1-3 tenths first-year ice including a trace of old ice.

July 6-11

- Bergy water with occasional areas of 1-3 tenths ice.

July 12-31

- Bergy water.

Foxe Basin.

July 1-12

- Open water with areas of 1-3 tenths first-year ice in the extreme northwestern section and along the coasts of Southampton Island.

- 1-3 tenths first-year ice with areas of 4-6 tenths first-year ice in the southwestern section.
- Elsewhere, 8-9+ tenths first-year ice.
- Consolidated first-year ice along the coasts beginning to fracture.

July 13-22

- 1-3 tenths ice with areas of 4-6 tenths ice in the extreme northwestern section and southwestern section.
- Open water along the coasts of Southampton Island.
- Elsewhere, 7-8 tenths ice with areas of 9-9+ tenths ice, including in Fury and Hecla Strait.
- Consolidated ice continuing to fracture.

July 23-31

- Open water with occasional areas of 1-3 tenths ice in the northwestern and southwestern sections.
- Elsewhere, 1-3 tenths ice with occasional areas of 7-8 tenths ice.
- 4-6 tenths ice with areas of 7-8 tenths ice in Fury and Hecla Strait.

Northwestern Hudson Bay.

July 1-6

- 1-3 tenths first-year ice in the extreme southeastern section.
- Elsewhere, open water with occasional areas of 1-3 tenths first-year ice.

July 7-12

- Open water with occasional areas of 1-3 tenths ice in extreme southeastern section.
- Elsewhere, open water to ice free.

July 13-20

- Open water to ice free

July 21-31

- Ice free.

Eastern Hudson Bay – James Bay

July 1-7

- Open water with areas of 7-8 tenths first-year ice in the extreme northern section.
- Open water with areas of 1-3 tenths first-year ice in the southeastern section and in extreme southern James Bay.
- Elsewhere, 7-8 tenths first-year ice with areas of 9-9+ tenths first-year ice.
- Consolidated first-year ice continuing to fracture.

July 8-15

- Open water with areas of 1-3 tenths ice in the northern section, southeastern section and in northern James Bay.
- Open water in southern James Bay.
- Elsewhere, 4-6 tenths ice with areas of 7-8 tenths ice.

July 16-22

- Open water in the extreme northern section and in southern James Bay.
- Elsewhere, open water with occasional areas of 1-3 tenths ice except 4-6 tenths ice in the southwestern section.

July 23-31

- Ice free in the extreme northern section and in southern James Bay.
- Elsewhere, open water with occasional areas of 1-3 tenths ice.

Southwestern Hudson Bay.

July 1-5

- Open water with occasional areas of 1-3 tenths first-year ice in the extreme northern section and along the coast in the southwestern section near the mouth of the Nelson River.
- 7-8 tenths first-year ice along the coast in the extreme southern section.
- Elsewhere, 7-8 tenths first-year ice with areas of 9-9+ tenths first-year ice.
- Consolidated first-year ice along the coast continuing to fracture.

July 6-13

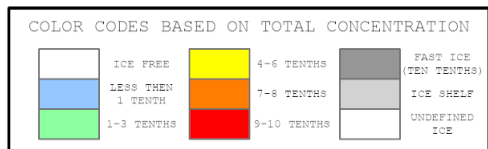
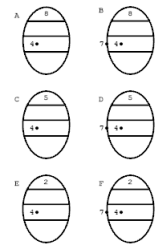
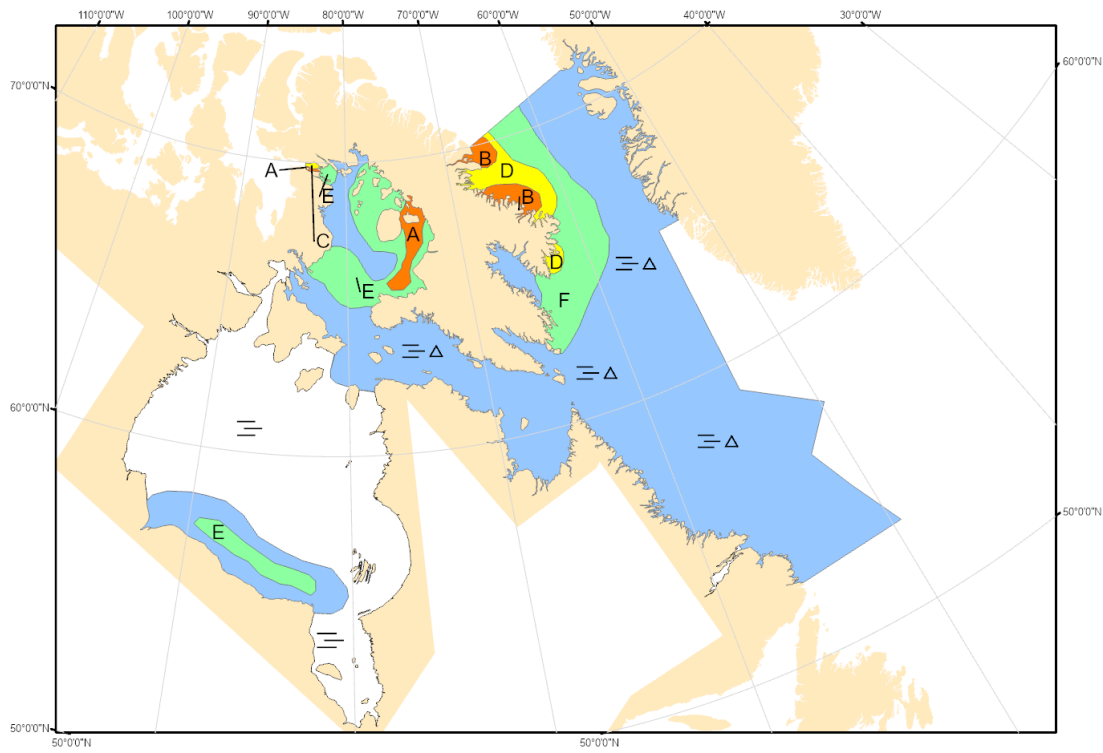
- Open water in the extreme northern section and along the coast in the southwestern section near the mouth of the Nelson River.
- Elsewhere, 4-6 tenths ice with areas of 7-8 tenths ice.

July 14-23

- Open water to ice free in the northern section and along the coast in the southwestern section near the mouth of the Nelson River.
- Elsewhere, 1-3 tenths ice with areas of 4-6 tenths ice.

July 24-31

- Open water to ice free except areas of 1-3 tenths ice in the extreme southern section.



North American Ice Service /
 Service des glaces de l'Amérique du Nord
 ICE FORECAST - 30 DAY
 PRÉVISIONS DES GLACES - 30 JOURS
 VALID/VALIDE: 31 JUL/JUIL. 2025