

FECN14 CWIS 011800

THIRTY DAY ICE OUTLOOK FOR THE WESTERN AND CENTRAL ARCTIC FOR JULY  
ISSUED BY ENVIRONMENT CANADA ON 1 JULY 2024.

THE NEXT 30 DAY OUTLOOK WILL BE ISSUED ON 15 JULY 2024.

### **Summary for June 14 to 28.**

Average air temperatures were near to slightly above normal over most of the western and central Arctic except below normal in the southwestern Chukchi Sea, Amundsen Gulf, Coronation Gulf and western Queen Maud Gulf. Ice melt is near normal except around 3-4 weeks earlier than normal in the eastern Beaufort Sea, western McClure Strait as well as Amundsen and Coronation Gulfs.

### **Weather forecast for July 1-31.**

Air temperatures are forecast to be near to below normal over most areas except over the central Arctic Archipelago where slightly above normal temperatures are expected.

### **Southeastern Beaufort Sea.**

July 1-7

- Bergy water with areas of 1-3 tenths first-year ice including a trace of old ice except 7-8 tenths first-year ice including a trace of old ice with areas of 9-9+ tenths first-year ice including a trace of old ice in the extreme western section.
- Bergy water with areas of 7-8 tenths first-year ice including a trace of old ice west of Banks Island.
- Consolidated first-year ice along the Tuktoyaktuk coast fracturing completely.
- Consolidated first-year ice in the Mackenzie Delta melting to open water conditions.

July 8-15

- Bergy water with areas of 1-3 tenths ice except 4-6 tenths ice with areas of 7-8 tenths ice in the extreme western section.
- Bergy water with areas of 4-6 tenths ice west of Banks Island.
- Open water with areas of 1-3 tenths ice along the southern coast.

July 16-31

- Bergy water except 1-3 tenths ice with areas of 4-6 tenths ice in the extreme northwestern section.
- Bergy water with areas of 1-3 tenths ice west of Banks Island.
- Open water to ice free along the southern coast.

### **Amundsen Gulf.**

July 1-7

- Open water with occasional areas of 1-3 tenths first-year ice in the northern section except 4-6 tenths first-year ice in Dolphin and Union Strait.
- Consolidated first-year ice in Minto Inlet and Prince Albert Sound continuing to fracture.

July 8-15

- Open water to ice free except 1-3 tenths ice in Dolphin and Union Strait.
- 4-6 tenths ice in Minto Inlet and Prince Albert Sound.

July 15-19

- Open water to ice free except occasional areas of 1-3 tenths ice in eastern Prince Albert Sound.

After July 19

- Open water to Ice free.

### **Prince of Wales Strait.**

July 1-9

- Consolidated first-year and old ice fracturing.

July 10-15

- 7-8 tenths ice.

July 16-23

- 1-3 tenths ice with areas of 7-8 tenths ice in the northern section.

July 24-31

- Bergy water with areas of 4-6 tenths ice in the extreme northern section.

### **Northern Alaskan Coast.**

July 1-7

- 8-9+ tenths first-year ice including a trace of old ice west of Point Barrow.
- Elsewhere, 9-9+ tenths first-year ice including a trace of old ice.
- Consolidated first-year ice along the coast continuing to fracture.

July 8-15

- 4-6 tenths ice with areas of 7-8 tenths ice west of Point Barrow.
- Elsewhere, 7-8 tenths ice with areas of 9-9+ tenths ice.
- Consolidated ice along the coast continuing to fracture.

July 16-31

- Bergy water with areas of 4-6 tenths ice near Point Barrow.
- Elsewhere, 4-6 tenths ice.

### **Western Alaskan Coast.**

July 1-9

- 9-9+ tenths first-year ice including a trace of old ice in the extreme northeastern section.
- 9-9+ tenths first-year ice along the coast west of Point Hope.
- Elsewhere, 4-6 tenths first-year ice with areas of 9-9+ tenths first-year ice.

July 10-17

- 4-6 tenths ice with areas of 7-8 tenths ice in the extreme northeastern section.
- Elsewhere, 1-3 tenths ice with areas of 7-8 tenths ice.

July 18-25

- 1-3 tenths ice in the extreme northeastern section.
- Elsewhere, open water to ice free with occasional areas of 1-3 tenths ice.

July 26-31

- Ice free except occasional areas of 1-3 tenths ice in the extreme northeastern section.

## **Northern Beaufort Sea south of 75°N.**

July 1-15

- Bergy water with areas of 7-8 tenths first-year ice including a trace of old ice within 60-80 nautical miles of Banks Island outside of the consolidated ice edge.
- 1-3 tenths first-year ice including a trace of old ice in the extreme southeastern section.
- 9-9+ tenths old and first-year ice in the northern section.
- 9-9+ tenths first-year ice including up to 1 tenth old ice in the southwestern section.
- Consolidated first-year ice including a trace of old ice along the coast of Banks Island continuing to fracture.

July 16-31

- Bergy water with areas of 4-6 tenths ice within 80-120 nautical miles of Banks Island.
- 1-3 tenths ice in the extreme southeastern section.
- Elsewhere, 9-9+ tenths ice except 7-8 tenths ice in the southwestern section.

## **Arctic Ocean north of 75°N.**

July 1-July 20

- 9-9+ tenths old and first-year ice.

July 21-31

- 9-9+ tenths ice except 4-6 tenths ice in the extreme southeastern section.

## **Coronation Gulf.**

July 1-5

- 1-3 tenths first-year ice in the western section.
- Consolidated first-year ice continuing to fracture in the eastern section.

July 6-11

- 7-8 tenths ice in the northeastern section.
- Elsewhere, 1-3 tenths ice.

July 12-18

- Ice melting completely to open water.

## **Queen Maud Gulf.**

July 1-6

- Consolidated first-year ice.

July 7-13

- Consolidated ice fracturing.

July 14-20

- 7-8 tenths ice.

July 21-26

- Open water except areas of 4-6 tenths ice in the northern section.

July 27-31

- Open water with occasional areas of 1-3 tenths ice in the northern section.

## **Victoria Strait – Larsen Sound.**

July 1-10

- Consolidated first-year ice.

July 11-18

- Consolidated ice fracturing.

July 19-24

- 9-9+ tenths ice.

July 25-31

- 7-8 tenths ice.

## **Peel Sound.**

July 1-16

- Consolidated first-year ice. Consolidated first-year ice including a trace of old ice in the extreme northern section.

July 17-23

- Consolidated ice fracturing.

July 24-31

- 4-6 tenths ice with areas of 9-9+ tenths ice.

## **M'Clintock Channel.**

July 1-9

- Consolidated first-year ice.

July 10-17

- Consolidated ice fracturing.

July 18-26

- 7-8 tenths ice.

July 27-31

- 4-6 tenths ice with areas of 7-8 tenths ice.

## **Viscount Melville Sound.**

July 1-13

- Consolidated first-year ice including up to 5 tenths old ice.

July 14-20

- Consolidated ice fracturing.

July 21-31

- 9-9+ tenths ice.

## **M'Clure Strait.**

July 1-7

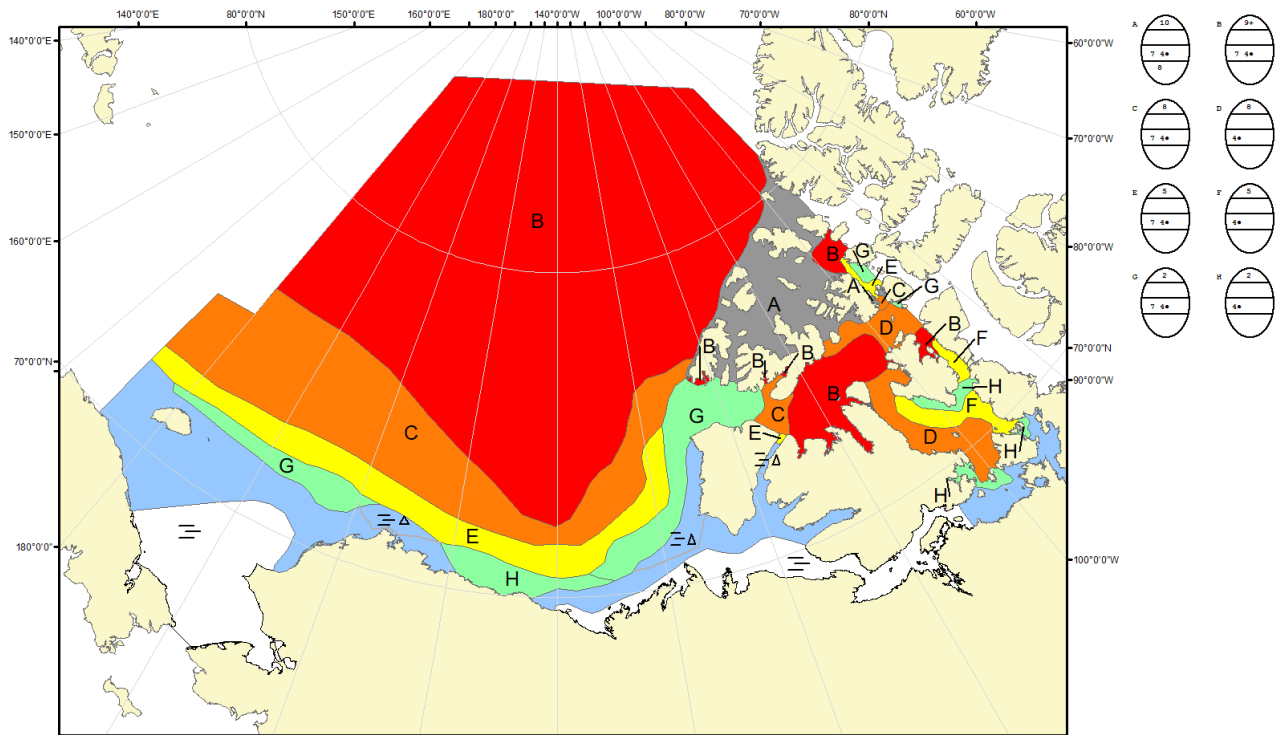
- Bergy water with areas of 4-6 tenths first-year ice including a trace of old ice in the western section.
- Consolidated first-year ice including up to 2 tenths old ice in the central and eastern sections fracturing.
- Consolidated first-year ice including a trace of old ice along the northern coast in the western section.



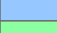






July 8-18

- 7-8 tenths ice.
- Consolidated ice along the northern coast in the western section.

July 19-31

- 1-3 tenths ice with areas of 7-8 tenths ice.
- Consolidated ice along the northern coast in the western section fracturing.



COLOR CODES BASED ON TOTAL CONCENTRATION			
	ICE FREE		PAST ICE (TEN TENTHS)
	LESS THEN 1 TENTH		ICE SHELF
	1-3 TENTHS		UNDEFINED ICE
	4-6 TENTHS		
	7-8 TENTHS		
	9-10 TENTHS		

North American Ice Service /  
 Service des glaces de l'Amérique du Nord  
 ICE FORECAST - 30 DAY  
 PRÉVISIONS DES GLACES - 30 JOURS  
 VALID/VALIDE: 31 JUL/JUIL 2024