

FECN14 CWIS 151800

THIRTY DAY ICE OUTLOOK FOR THE WESTERN AND CENTRAL ARCTIC FOR MID-OCTOBER TO MID-NOVEMBER ISSUED BY ENVIRONMENT CANADA ON 15 OCTOBER 2024. THE NEXT 30 DAY OUTLOOK WILL BE ISSUED ON 1 NOVEMBER 2024.

Summary for October 1 to 12.

Average air temperatures were slightly above to significantly above normal over all regions. Sea ice continues to be at a record breaking low extent and freeze-up has barely begun along the fringes of the main ice pack in the northern Beaufort Sea.

Weather forecast for mid-October to mid-November.

Air temperatures are forecast to be above normal over all regions except near normal over the Chukchi Sea.

Southeastern Beaufort Sea.

October 15-18

- Bergy water except open water to ice free along the coast in the southern section.

October 19-25

- Bergy water except open water with areas of 4-6 tenths new and grey ice in sheltered bays along the coast.

October 26-November 2

- Bergy water with areas of 4-6 tenths new and grey ice in the extreme northeastern section.
- 9-9+ tenths new and grey ice along the coast.

November 3-8

- 4-6 tenths new and grey ice.
- 9-9+ tenths new and grey ice along the coast.
- Consolidated grey ice along parts of the coast.

November 9-15

- 7-8 tenths new and grey ice except 4-6 tenths new and grey ice in the eastern section.
- 9-9+ tenths grey and grey-white ice in the northern section.
- Consolidated grey-white ice along parts of the coast.

Amundsen Gulf.

October 15-20

- Ice free except open water along the coasts.

October 21-27

- Open water.

October 28-31

- Open water with areas of 1-3 tenths new ice in sheltered bays in Minto Inlet and Prince Albert Sound.

November 1-7

- Open water with areas of 1-3 tenths new ice.
- 9-9+ tenths new and grey ice in Minto Inlet and Price Albert Sound.

November 8-15

- Open water with areas of 4-6 tenths new and grey ice.
- 9-9+ tenths grey and grey-white ice in Minto Inlet and Price Albert Sound.

Prince of Wales Strait.

October 15-20

- Bergy water.

October 21-November 5

- Bergy water except 4-6 tenths new ice in the extreme northern section.

November 6-15

- Bergy water in the southern section.
- Elsewhere, 1-3 tenths new and grey ice with areas of 4-6 tenths grey and grey-white ice.

Northern Alaskan Coast.

October 15-18

- Bergy water except open water with areas of 1-3 tenths new ice along the coast.

October 19-26

- Bergy water except open water with areas of 7-8 tenths new ice along the coast.

October 27-November 7

- Bergy water or open water except 9-9+ tenths new and grey ice along the coast.
- Consolidated grey ice along parts of the coast.

November 8-15

- 7-8 tenths new and grey ice.
- Consolidated grey-white ice along parts of the coast.

Western Alaskan Coast.

October 15-22

- Ice free except open water with areas of 7-8 tenths new ice along parts of the coast.
- Bergy water in the extreme northeastern section.

October 23-31

- Open water with areas of 9-9+ tenths new and grey ice along parts of the coast.
- Bergy water in the extreme northeastern section.

November 1-7

- 1-3 tenths new and grey ice except 9-9+ tenths grey ice along parts of the coast.
- Consolidated grey ice along parts of the coast.

November 8-15

- 1-3 tenths new and grey ice except 4-6 tenths new and grey ice in the eastern section.
- Consolidated grey-white ice along parts of the coast.

Northern Beaufort Sea south of 75°N.

October 15-22

- 4-6 tenths new and grey ice the extreme northeastern and northwestern sections.
- Elsewhere, bergy water.

October 23-31

- 9-9+ tenths grey and grey-white ice including a trace of multi-year ice in the extreme northeastern section.
- Elsewhere, 4-6 tenths new and grey ice.

November 1-7

- 9-9+ tenths grey-white, first-year and multi-year ice in the extreme northeastern section.
- Elsewhere, 7-8 tenths grey and grey-white ice.

November 8-15

- 9-9+ tenths grey-white, first-year and multi-year ice in the northern section.
- Elsewhere, 9-9+ tenths grey and grey-white ice.
- Consolidated grey-white ice along parts of the coast of Banks Island.

Coronation Gulf.

October 15-23

- Open water to ice free.

October 24-November 4

- Open water with occasional areas of 1-3 tenths new ice along parts of the coasts.

November 5-11

- 7-8 tenths new and grey ice in the eastern section.
- Elsewhere, open water with areas of 1-3 tenths new ice.

November 12-15

- 7-8 tenths grey and grey-white ice in the eastern section.
- Elsewhere, open water with areas of 1-3 tenths grey ice.
- Consolidated grey-white ice in sheltered bays in the eastern section.

Queen Maud Gulf.

October 15-23

- Open water to ice free except bergy water northeast of King William Island.

October 24-31

- Open water with areas of 4-6 tenths new ice along parts of the coasts.

November 1-7

- 7-8 tenths new and grey ice in the eastern section.
- Elsewhere, 4-6 tenths new and grey ice.

November 8-11

- 9-9+ tenths new and grey ice.

November 12-15

- 9-9+ tenths grey and grey-white ice.
- Consolidated grey-white ice along parts of the coasts.

Victoria Strait – Larsen Sound.

October 15-20

- Bergy water.

October 21-31

- Bergy water with areas of 4-6 tenths new ice along parts of the coasts.

November 1-6

- 7-8 tenths new and grey ice.

November 7-15

- 9-9+ tenths grey and grey-white ice.
- Consolidated grey-white ice in sheltered bays along the coasts.

Peel Sound.

October 15-18

- Bergy water

October 19-26

- 1-3 tenths new ice.

October 27-November 2

- 7-8 tenths new and grey ice.
- 9-9+ tenths grey and grey-white ice in sheltered bays.

November 3-12

- 9-9+ tenths new and grey ice.
- Consolidated grey ice in sheltered bays.

November 13-15

- 9-9+ tenths grey and grey-white ice.
- Consolidated grey-white ice in sheltered bays.

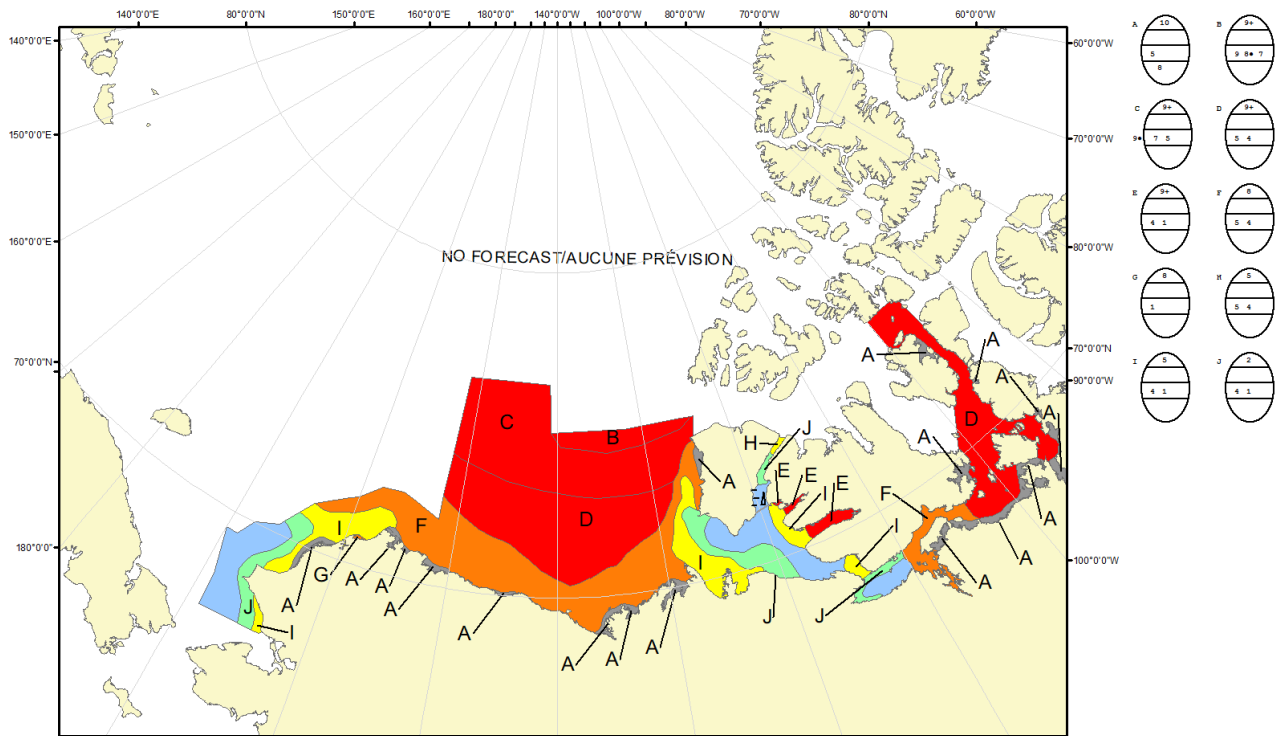
Arctic Ocean north of 75°N

M'Clintock Channel

Viscount Melville Sound

M'Clure Strait.

Forecasts have ended for the season.



COLOR CODES BASED ON TOTAL CONCENTRATION

	ICE FREE		4-6 TENTHS		FAST ICE (TEN TENTHS)
	LESS THEN 1 TENTH		7-8 TENTHS		ICE SHELF
	1-3 TENTHS		9-10 TENTHS		UNDEFINED ICE

North American Ice Service /
Service des glaces de l'Amérique du Nord
ICE FORECAST - 30 DAY
PRÉVISIONS DES GLACES - 30 JOURS
VALID/VALIDE: 15 NOV/NOV 2024