

FECN14 CWIS 011800

THIRTY DAY ICE OUTLOOK FOR THE WESTERN AND CENTRAL ARCTIC FOR JULY  
ISSUED BY ENVIRONMENT CANADA ON 1 JULY 2025.

THE NEXT 30 DAY OUTLOOK WILL BE ISSUED ON 15 JULY 2025.

### **Summary for June 15 to 27.**

Average air temperatures were above normal over all regions except near to below normal in Queen Maud Gulf, McClintock Channel and Peel Sound. Ice melt is 3-4 weeks slower than normal in the southeastern Beaufort Sea, along the west coast of Banks Island and in the Amundsen Gulf. Ice melt is earlier than normal along the western Alaskan coast. Elsewhere, ice melt is near normal.

### **Weather forecast for July 1-31.**

Air temperatures are forecast to be slightly above normal in Coronation Gulf, Queen Maud Gulf, McClintock Channel, McClure Strait and Peel Sound. Elsewhere, air temperatures are forecast to be near to below normal.

### **Southeastern Beaufort Sea.**

July 1-10

- 9-9+ tenths first-year and old ice in the northern section.
- 4-6 tenths first-year and old ice with areas of 9-9+ tenths first-year and old ice in the southern section.
- Open water with areas of 1-3 tenths first-year ice in Mackenzie Bay.
- Consolidated first-year ice including up to 2 tenths old ice along the coast of Banks Island beginning to fracture.
- Consolidated first-year ice along the Tuktoyaktuk coast fracturing completely.

July 11-18

- 1-3 tenths ice with occasional areas of 4-6 tenths ice in the southern section.
- Open water in Mackenzie Bay.
- 7-8 tenths ice with areas of 9-9+ tenths ice in the northern section.

July 19-31

- Bergy water with areas of 1-3 tenths ice except 7-8 tenths ice with areas of 9-9+ tenths ice in the extreme northern section.

### **Amundsen Gulf.**

July 1-6

- Open water with areas of 1-3 tenths first-year ice in Darnley Bay.
- Consolidated first-year ice in Minto Inlet and Prince Albert Sound fracturing.
- Elsewhere, 8-9+ tenths first-year ice.

July 7-13

- 7-8 tenths ice with areas of 9-9+ tenths ice.
- Consolidated ice in Minto Inlet and Prince Albert Sound continuing to fracture.

July 14-23

- 4-6 tenths ice with areas of 7-8 tenths ice.
- 7-8 tenths ice in Minto Inlet and Prince Albert Sound.

July 24-31

- 1-3 tenths ice with areas of 4-6 tenths ice
- 4-6 tenths Minto Inlet and Prince Albert Sound.

### **Prince of Wales Strait.**

July 1-8

- Consolidated first-year ice fracturing.

July 9-13

- 9-9+ tenths ice.

July 14-21

- 7-8 tenths ice.

July 22-31

- 4-6 tenths ice with areas of 7-8 tenths ice.

### **Northern Alaskan Coast.**

July 1-4

- 8-9+ tenths first-year and old ice in the northern and eastern sections.
- 9-9+ tenths first-year and old ice west of Point Barrow.
- Consolidated first-year ice along the coast.

July 5-15

- 8-9+ tenths ice except 7-8 tenths ice in the extreme eastern section.
- Consolidated ice along the coast beginning to fracture.

July 16-22

- 4-6 tenths ice with areas of 7-8 tenths ice in the extreme eastern section and west of Point Barrow.
- Elsewhere, 7-8 tenths ice with areas of 9-9+ tenths ice.

July 23-31

- 1-3 tenths ice in the eastern section and west of Point Barrow.
- Elsewhere, 7-8 tenths ice with areas of 9-9+ tenths ice.

### **Western Alaskan Coast.**

July 1-7

- 9-9+ tenths first-year and old ice in the northeastern section.
- 7-8 tenths first-year ice along the coast, south of Point Hope.
- Elsewhere, 1-3 tenths first-year ice with areas of 7-8 tenths first-year ice.
- Consolidated first-year ice along the coast continuing to fracture.

July 8-15

- 7-8 tenths ice in the extreme northeastern section.
- Elsewhere, open water with areas of 4-6 tenths ice.

July 16-22

- 4-6 tenths ice in the extreme northeastern section.
- Elsewhere, open water with occasional areas of 1-3 tenths ice.

July 23-31

- Open water to ice free except areas of 1-3 tenths ice in the extreme northeastern section.

## **Northern Beaufort Sea south of 75°N.**

July 1-5

- 9-9+ tenths first-year ice including 2 tenths old ice in the northwestern section.
- Elsewhere, 9-9+ tenths old and first-year ice.
- Consolidated first-year ice including up to 2 tenths old ice along the coast of Banks Island beginning to fracture.

July 6-20

- 9-9+ tenths ice except 8-9+ tenths ice west of Banks Island along the consolidated ice edge.
- Consolidated ice along the coast of Banks Island continuing to fracture.

July 21-31

- 9-9+ tenths ice except 7-8 tenths ice in the southwestern and extreme eastern sections.

## **Arctic Ocean north of 75°N.**

July 1-20

- 9-9+ tenths first-year ice including 2 tenths old ice in the western section.
- 9-9+ tenths old and first-year ice in the eastern section.
- Consolidated old and first-year ice along the coasts in the eastern section.

July 21-31

- 8-9+ tenths ice.
- Consolidated ice along the coasts beginning to fracture.

## **Coronation Gulf.**

July 1-3

- 7-8 tenths first-year ice in the western section.
- Consolidated first-year ice continuing to fracture in the eastern section.

July 4-9

- 9-9+ tenths ice in the northeastern section.
- Elsewhere, 4-6 tenths ice.

July 10-15

- 7-8 tenths ice in the northeastern section.
- Elsewhere, 1-3 tenths ice.

July 16-20

- Open water except areas of 1-3 tenths ice in the northern section.

July 21-31

- Open water.

## **Queen Maud Gulf.**

July 1-10

- Consolidated first-year ice beginning to fracture.

July 11-18

- 9-9+ tenths ice.

July 19-24

- 7-8 tenths ice.

July 25-31

- Open water except areas of 4-6 tenths ice in the northern section.

### **Victoria Strait – Larsen Sound.**

July 1-12

- Consolidated first-year ice.

July 13-20

- Consolidated ice fracturing.

July 23-31

- 4-6 tenths ice with areas of 9-9+ tenths ice.

### **Peel Sound.**

July 1-15

- Consolidated first-year ice.

July 16-23

- Consolidated ice fracturing.

July 24-31

- 4-6 tenths ice with areas of 9-9+ tenths ice.

### **M'Clintock Channel.**

July 1-14

- Consolidated first-year ice.

July 15-22

- Consolidated ice fracturing.

July 23-31

- 7-8 tenths ice with areas of 9-9+ tenths ice.

### **Viscount Melville Sound.**

July 1-15

- Consolidated first-year ice including a trace of old ice except consolidated old and first-year ice in the extreme western section.

July 16-22

- Consolidated ice fracturing.

July 23-31

- 7-8 tenths ice with areas of 9-9+ tenths ice.

### **M'Clure Strait.**

July 1-9

- Consolidated first-year and old ice eastern section and along the north coast in the western section.
- Elsewhere, 9-9+ tenths first-year and old ice.

July 10-17

- Consolidated ice in the eastern section fracturing.
- Elsewhere, 9-9+ tenths ice.

July 18-25

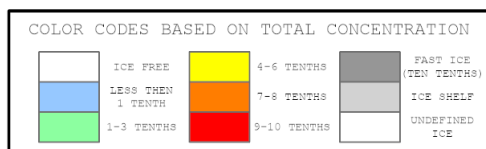
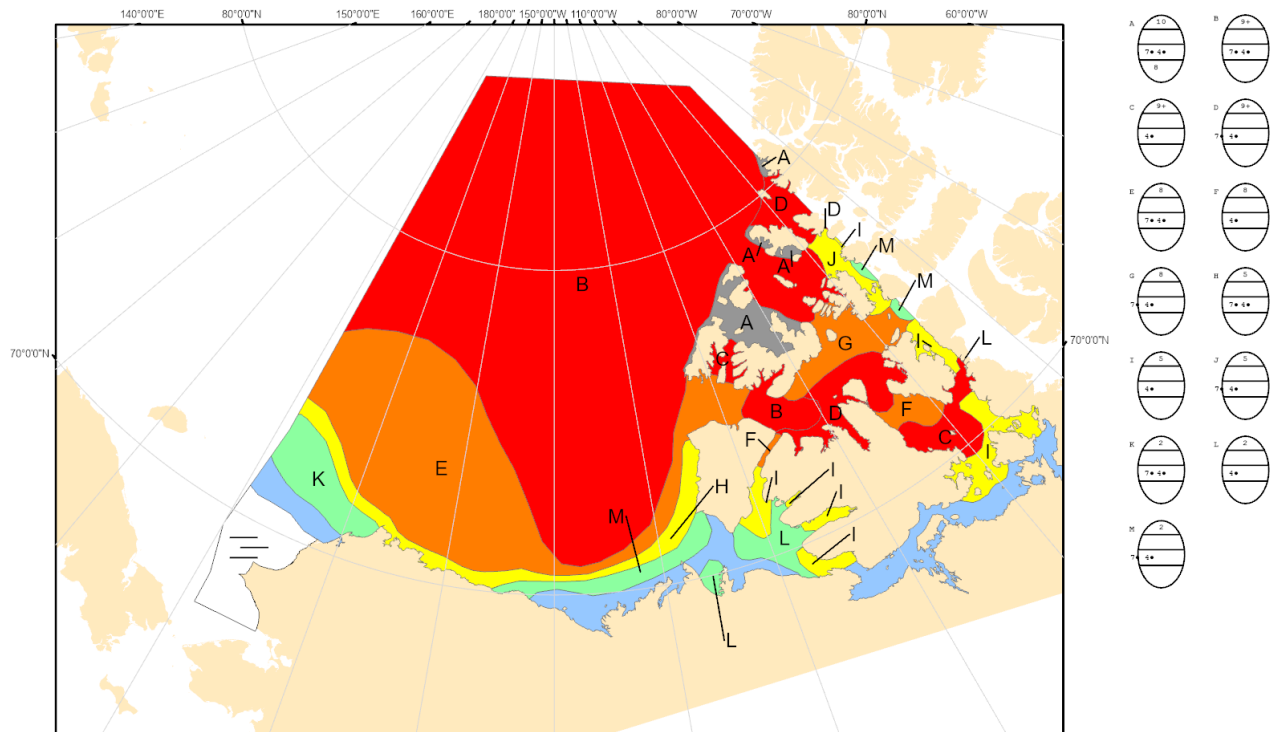
- 8-9+ tenths ice.

- Consolidated ice along the coasts continuing to fracture.

July 26-31

- 7-8 tenths ice in the western section.

- 9-9+ tenths ice in the eastern section.



North American Ice Service /  
Service des glaces de l'Amérique du Nord  
ICE FORECAST - 30 DAY  
PRÉVISIONS DES GLACES - 30 JOURS  
VALID/VALIDE: 31 JUL/JUIL. 2025