

FECN14 CWIS 151800

THIRTY DAY ICE OUTLOOK FOR THE WESTERN AND CENTRAL ARCTIC FOR MID-JULY TO MID-AUGUST ISSUED BY ENVIRONMENT CANADA ON 15 JULY 2025.

THE NEXT 30 DAY OUTLOOK WILL BE ISSUED ON 1 AUGUST 2025.

### **Summary for July 1 to 13.**

Average air temperatures were below normal over all regions except above normal over the Western Alaska Coast and near normal over the Beaufort Sea and Arctic Ocean. Ice melt is later than normal southwest of Banks Island, in Amundsen Gulf and in Dolphin and Union Strait. Ice melt is earlier than normal in Coronation Gulf and Dease Strait and northwestern Queen Maud Gulf and along the Western Alaska Coast. Elsewhere, ice melt is near normal.

### **Weather forecast for July 15 to August 15.**

Air temperatures are forecast to be below normal along the Northern Alaska Coast, the Southeastern Beaufort Sea, Amundsen Gulf and Dolphin and Union Strait. Elsewhere, air temperatures are forecast to be near normal.

### **Southeastern Beaufort Sea.**

July 15-21

- 9-9+ tenths first-year and old ice in the extreme northern section and west of Sachs Harbour.
- Open water in Mackenzie Bay, along the Tuktoyaktuk coast and in Liverpool Bay.
- 1-3 tenths first-year and old ice with areas of 7-8 tenths first-year and old ice in Franklin Bay.
- Elsewhere, 1-3 tenths first-year and old ice with areas of 4-6 tenths first-year and old ice.

July 22-28

- Bergy water with areas of 1-3 tenths ice except 7-8 tenths ice with areas of 9-9+ tenths ice in the extreme northern section.

July 29-August 5

- 1-3 tenths ice with areas of 4-6 tenths ice in the extreme northern section.
- 7-8 tenths ice with areas of 9-9+ tenths ice in the northeastern section.
- 1-3 tenths ice with areas of 4-6 tenths ice in the eastern section and into Franklin Bay.
- Elsewhere, open water.

August 6-15

- 1-3 tenths ice with areas of 4-6 tenths ice in the northern section.
- 4-6 tenths ice with areas of 7-8 tenths ice in the northeastern section.
- 1-3 tenths ice with areas of 4-6 tenths ice in the eastern section and into Franklin Bay.
- Elsewhere, open water to ice free.

## **Amundsen Gulf.**

July 15-22

- 7-8 tenths first-year ice with areas of 9-9+ tenths first-year ice in the extreme southeastern Amundsen Gulf and along the southern coast in Dolphin and Union Strait.
- 9-9+ tenths first-year ice in extreme eastern Prince Albert Sound.
- Elsewhere, open water with occasional areas of 1-3 tenths first-year ice.

July 23-31

- 1-3 tenths ice.
- 4-6 tenths ice with patches of 7-8 tenths ice in Dolphin and Union Strait melting to patches of 1-3 tenths ice.
- 4-6 tenths ice in eastern Prince Albert Sound melting to open water.

August 1-5

- Open water except patches of 1-3 tenths ice in the extreme southeastern section.

August 6-15

- Open water.

## **Prince of Wales Strait.**

July 15-21

- Bergy water with areas of 1-3 tenths first-year ice.
- 9-9+ tenths first-year ice in the extreme northern section.

July 22-31

- 1-3 tenths ice with areas of 4-6 tenths ice in northern section.
- Elsewhere, bergy water with areas of 1-3 tenths ice.

August 1-8

- Bergy water with occasional areas of 4-6 tenths ice in the northern section.

August 9-15

- Bergy water.

## **Northern Alaskan Coast.**

July 15-20

- 9-9+ tenths first-year and old ice in the northern section and from Point Barrow westwards.
- 4-6 tenths first-year ice with patches of 7-8 tenths first-year ice in the southern section east of Point Barrow.

July 21-25

- 9-9+ tenths ice in the northern section.
- 7-8 tenths ice in the southern section west of Point Barrow.
- 1-3 tenths ice with patches of 4-6 tenths ice in the southern section east of Point Barrow.

July 26-31

- 7-8 tenths ice in the northern section.
- 1-3 tenths ice with patches of 4-6 tenths ice in the southern section.

August 1-6

- 4-6 tenths ice in the northern section.
- 1-3 tenths ice with patches of 4-6 tenths ice in the southern section.

August 7-15

- Open water with areas of 1-3 tenths ice.

## **Western Alaskan Coast.**

July 15-21

- 9-9+ tenths first-year and old ice in the extreme northeastern section.
- Open water in the extreme southwestern section.
- Elsewhere, open water with occasional patches of 1-3 tenths first-year and old ice.

July 22-August 5

- Open water except areas of 4-6 tenths ice in the extreme northeastern section.

August 6-15

- Open water with patches of 1-3 tenths ice in the extreme northeastern section.
- Elsewhere, ice free.

## **Northern Beaufort Sea south of 75°N.**

July 15-23

- 9-9+ tenths old ice.
- Consolidated ice along the coast of Banks Island continuing to fracture.

July 24-31

- 9-9+ tenths ice except 7-8 tenths ice in the southern section.

August 1-7

- 9-9+ tenths ice except 7-8 tenths ice in the southern and extreme eastern sections.

August 8-15

- 9-9+ tenths ice except 7-8 tenths ice in the southwestern sections.
- 4-6 tenths ice in the southern and extreme western sections.

## **Arctic Ocean north of 75°N.**

July 15-26

- 9-9+ tenths first-year ice including 2 tenths old ice in the western section.
- 9-9+ tenths old in the eastern section.
- Consolidated old and first-year ice along the coasts in the eastern section.

July 27-August 5

- 9-9+ tenths ice except 7-8 tenths ice in the southwestern section.
- Consolidated ice along the coasts beginning to fracture.

August 6-15

- 9-9+ tenths ice except 7-8 tenths ice in the southwestern section and the extreme southeastern section.

## **Coronation Gulf.**

July 15-20

- Open water except 7-8 tenths first-year ice in the extreme northwestern section.

July 21-26

- Open water except patches of 4-6 tenths ice in the extreme northwestern section.

July 27-August 4

- Open water except patches of 1-3 tenths ice in the northwestern section.

August 5-15

- Open water to ice free.

## **Queen Maud Gulf.**

July 15-24

- 1-3 tenths first-year ice with areas of 7-8 tenths first-year ice in the northern and eastern sections and along the coast west of the Adelaide Peninsula.
- Elsewhere, open water.

July 25-31

- Open water with areas of 4-6 tenths ice in the southeastern section and extreme northern section.

August 1-7

- Open water with areas of 1-3 tenths ice in the southeastern section and near Victoria Strait.

August 8-15

- Ice melting to open water.

## **Victoria Strait – Larsen Sound.**

July 15-27

- Bergy water with areas of 4-6 tenths first-year ice in the extreme southwestern section.
- Elsewhere, 9-9+ tenths first-year ice.

July 23-August 3

- 7-8 tenths ice with areas of 9-9+ tenths ice from King William Island to M'Clintock Channel.

August 4-15

- 4-6 tenths ice with areas of 7-8 tenths ice from King William Island to M'Clintock Channel.

## **Peel Sound.**

July 15-19

- Consolidated first-year ice fracturing.

July 20-26

- 7-8 tenths ice in the northern section.
- 9-9+ tenths ice in the southern section.

July 27-August 2

- 4-6 tenths ice in the northern section.
- 7-8 tenths ice in the southern section.

August 3-15

- Bergy water with areas of 1-3 tenths ice in the northern section and 4-6 tenths ice in the southern section.

## **M'Clintock Channel.**

July 15-25

- 9-9+ tenths first-year ice.

July 26-August 5

- 9-9+ tenths ice except 7-8 tenths ice along the southern coast of Prince of Wales Island.

August 6-15

- 7-8 tenths ice except 1-3 tenths ice along the southwestern coast of Prince of Wales Island.

### **Viscount Melville Sound.**

July 15-20

- Consolidated first-year ice including a trace of old ice except consolidated old and first-year ice in the extreme western section.

July 21-25

- Consolidated ice fracturing.

July 26-August 7

- 9-9+ tenths ice.

August 8-15

- 9-9+ tenths ice with areas of 7-8 tenths ice in the extreme northern section.

### **M'Clure Strait.**

July 15-18

- Consolidated old and first-year ice in the eastern section fracturing.
- Elsewhere, 9-9+ tenths old and first-year ice.

July 19-25

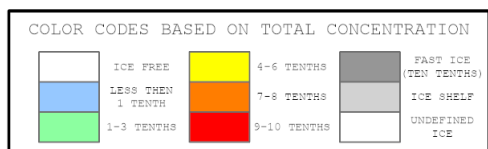
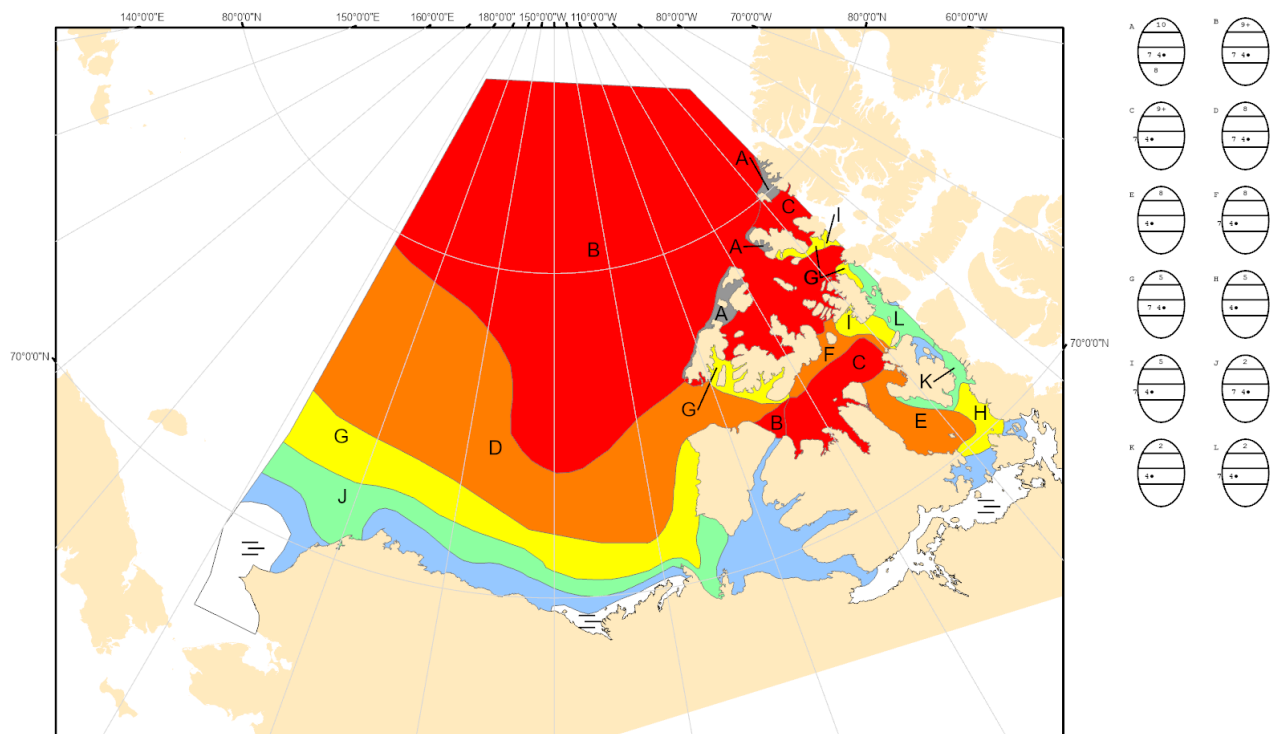
- 9-9+ tenths ice.
- Consolidated ice along the coasts continuing to fracture.

July 26-August 5

- 7-8 tenths ice in the western section.
- 9-9+ tenths ice in the eastern section.

August 6-15

- 4-6 tenths ice in the northeastern section.
- Elsewhere, 7-8 tenths ice with areas of 9-9+ tenths ice.



North American Ice Service /  
Service des glaces de l'Amérique du Nord  
ICE FORECAST - 30 DAY  
PRÉVISIONS DES GLACES - 30 JOURS  
VALID/VALIDE: 15 AUG/AOÛT 2025