

FECN14 CWIS 151800

THIRTY DAY ICE OUTLOOK FOR THE WESTERN AND CENTRAL ARCTIC FOR MID-AUGUST TO MID-SEPTEMBER ISSUED BY ENVIRONMENT CANADA ON 15 AUGUST 2025. THE NEXT 30 DAY OUTLOOK WILL BE ISSUED ON 29 AUGUST 2025.

Summary for August 1 to 12.

Average air temperatures were near normal over the Arctic Ocean and western Beaufort Sea, and above normal along the western and northern Alaskan coasts. Elsewhere, average air temperatures were below normal. Ice extent is greater than normal in the southern Beaufort Sea and in Amundsen Gulf. Ice melt is about 7-8 weeks slower than normal in the eastern Beaufort Sea, southwest of Banks Island; 6 weeks slower in Darnley and Franklin Bays; and 4-5 weeks slower in Amundsen Gulf, including near the northern section of Dolphin and Union Strait. Ice melt is about 1 week slower than normal in the northern Beaufort Sea. Ice extent is below normal in portions of the western Arctic Archipelago. Ice melt is 1-2 weeks faster than normal in Victoria Strait and Larsen Sound, 2-3 weeks faster in Prince Regent Inlet and Viscount Melville Sound, and about 1 week faster in McClure Strait. Elsewhere, ice melt is near normal.

Weather forecast for August 15-September 15.

Air temperatures are forecast to be below normal along the northern Alaska Coast and in the southern Beaufort Sea. Air temperatures are forecast to be near normal over the southern Arctic Ocean. Elsewhere, air temperatures are forecast to be above normal.

Southeastern Beaufort Sea.

August 15-22

- 7-8 tenths first-year and old ice with areas of 9-9+ tenths first-year and old ice in the extreme northern section and west of Banks Island.
- 4-6 tenths first-year and old ice in Franklin Bay.
- Ice free in Mackenzie Bay.
- Open water with areas of 1-3 tenths first-year and old ice along the Tuktoyaktuk coast.

August 23-31

- 7-8 tenths ice in the extreme northern section and west of Banks Island.
- Open water with areas of 1-3 tenths ice in Franklin Bay.
- Ice free in Mackenzie Bay.
- Open water along the Tuktoyaktuk coast.

September 1-15

- 4-6 tenths ice with areas of 7-8 tenths ice in the extreme northern section.
- 7-8 tenths ice west of Banks Island.
- Open water in Franklin Bay.
- Ice free in Mackenzie Bay.
- Open water along the Tuktoyaktuk coast.

Amundsen Gulf.

August 15-25

- 1-3 tenths first-year and old ice with areas of 4-6 tenths first-year and old ice in the southwestern section including in Darnley Bay.
- Ice free in Prince Albert Sound and Minto Inlet.
- Bergy water with areas of 1-3 tenths first-year and old ice in the southern section near the entrance to Dolphin and Union Strait.
- Elsewhere, open water.

August 26-31

- 1-3 tenths ice in the southern section including in Darnley Bay and near the entrance to Dolphin and Union Strait.
- Ice free in Prince Albert Sound and Minto Inlet.
- Elsewhere, open water.

September 1-7

- Bergy water with areas of 1-3 tenths ice in the southern section including in Darnley Bay.
- Ice free in Prince Albert Sound and Minto Inlet.
- Elsewhere, open water.

September 8-15

- Bergy water with occasional areas of 1-3 tenths ice in the southern section including in Darnley Bay.
- Elsewhere, open water to ice free.

Prince of Wales Strait.

August 15-22

- 1-3 tenths first-year ice including a trace of old ice with areas of 4-6 tenths first-year and old ice in the northern section.
- Elsewhere, bergy water.

August 23-31

- Bergy water with areas of 1-3 tenths ice in the northern section.

September 1-15

- Bergy water with occasional areas of 1-3 tenths ice in the extreme northern section.

Northern Alaskan Coast.

August 15-22

- 4-6 tenths first-year and old ice with areas of 7-8 tenths first-year and old ice in the extreme northern section.
- Elsewhere 1-3 tenths first-year and old ice with occasional areas of 4-6 tenths first-year and old ice.

August 23-31

- 4-6 tenths ice in the extreme northern section.
- Elsewhere, bergy water with areas of 1-3 tenths ice.

September 1-10

- 1-3 tenths ice with occasional areas of 4-6 tenths ice in the extreme northern section.
- Elsewhere, bergy water with occasional areas of 1-3 tenths ice.

September 11-15

- 1-3 tenths ice in the extreme northern section.
- Elsewhere, bergy water.

Western Alaskan Coast.

August 15-20

- Bergy water with areas of 1-3 tenths first-year and old ice in the extreme northeastern section.
- Elsewhere, ice free.

August 21-September 15

- Bergy water in the extreme northeastern section.
- Elsewhere, ice free.

Northern Beaufort Sea south of 75°N.

August 15-22

- 9-9+ tenths first-year and old ice except 7-8 tenths ice in the western section.

August 23-September 7

- 4-6 tenths ice with areas of 7-8 tenths ice in the extreme western section.
- 7-8 tenths ice in the central section.
- 9-9+ tenths ice in the eastern section.

September 8-15

- 4-6 tenths ice in the western section.
- Elsewhere, 7-8 tenths ice with areas of 9-9+ tenths ice.

Arctic Ocean north of 75°N.

August 15-September 15

- 9-9+ tenths first-year ice including 2 tenths old ice in the northwestern section.
- 7-8 tenths first-year ice including 2 tenths old ice in the southwestern section.
- 9-9+ tenths old and first-year ice in the eastern section.

Coronation Gulf.

August 15-31

- Open water in the western section with a risk of patches of 1-3 tenths first-year and old ice moving into the extreme northern section.
- Ice free in the eastern section.

September 1-15

- Ice free except open water in the extreme northwestern section.

Queen Maud Gulf.

August 15-22

- Open water with areas of 1-3 tenths first-year ice in the extreme northeastern section along the coast of King William Island.
- Elsewhere, ice free.

August 23-September 15

- Ice free.

Victoria Strait – Larsen Sound.

August 15-24

- 4-6 tenths first-year ice with areas of 9-9+ tenths first-year ice from King William Island to M'Clintock Channel.
- Elsewhere, bergy water with occasional areas of 1-3 tenths first-year ice.

August 25-31

- 1-3 tenths ice with areas of 4-6 tenths ice from King William Island to M'Clintock Channel.
- Elsewhere, bergy water with occasional areas of 1-3 tenths ice.

September 1-7

- Bergy water with areas of 1-3 tenths ice.

September 8-15

- Bergy water with occasional areas of 1-3 tenths ice.

Peel Sound.

August 15-22

- 4-6 tenths first-year ice including a trace of old ice with areas of 9-9+ tenths first-year ice including a trace of old ice in the extreme northern section.
- Bergy water in the southern section.
- Elsewhere, bergy water with areas of 1-3 tenths first-year ice.

August 23-28

- 1-3 tenths ice with areas of 7-8 tenths in the extreme northern section.
- Bergy water in the southern section.
- Elsewhere, bergy water with occasional areas of 1-3 tenths ice.

August 29-September 7

- 1-3 tenths ice with occasional areas of 4-6 tenths ice in the extreme northern section.
- Elsewhere, bergy water.

September 8-15

- Bergy water with occasional areas of 1-3 tenths ice in the extreme northern section.
- Elsewhere, bergy water.

M'Clintock Channel.

August 15-22

- 9-9+ tenths first-year ice including a trace of old ice in the northern section.
- 7-8 tenths first-year ice with areas of 9-9+ tenths first-year ice along the Victoria Island coast.
- Bergy water with areas of 1-3 tenths first-year ice along the southwestern coast of Prince of Wales Island.

August 23-31

- 9-9+ tenths ice in the extreme northern section.
- 4-6 tenths ice with areas of 7-8 tenths ice along the Victoria Island coast.
- Bergy water with areas of 1-3 tenths ice along the southwestern coast of Prince of Wales Island.

September 1-7

- 7-8 tenths ice in the extreme northern section.
- 1-3 tenths ice with areas of 4-6 tenths ice along the Victoria Island coast.

- Bergy water with areas of 1-3 tenths ice along the southwestern coast of Prince of Wales Island.

September 8-15

- 4-6 tenths ice in the northern section.
- 1-3 tenths ice with areas of 4-6 tenths ice along the Victoria Island coast.
- Elsewhere, bergy water with areas of 1-3 tenths ice.

Viscount Melville Sound.

August 15-22

- 1-3 tenths first-year ice including a trace of old ice with areas of 4-6 tenths first-year ice including a trace of old ice in the northern and extreme eastern sections.
- 9-9+ tenths first-year and old ice in the southwestern section.

August 23-31

- 1-3 tenths ice with areas of 4-6 tenths ice in the northern and extreme eastern sections.
- Elsewhere, 7-8 tenths ice with areas of 9-9+ tenths ice.

September 1-7

- Bergy water with areas of 1-3 tenths ice in the extreme northern and eastern sections.
- Elsewhere, 4-6 tenths ice with areas of 7-8 tenths ice.

September 8-15

- Bergy water with occasional areas of 1-3 tenths ice in the extreme northern and eastern sections.
- 7-8 tenths ice in the extreme southwestern section.
- Elsewhere, 4-6 tenths ice.

M'Clure Strait.

August 15-24

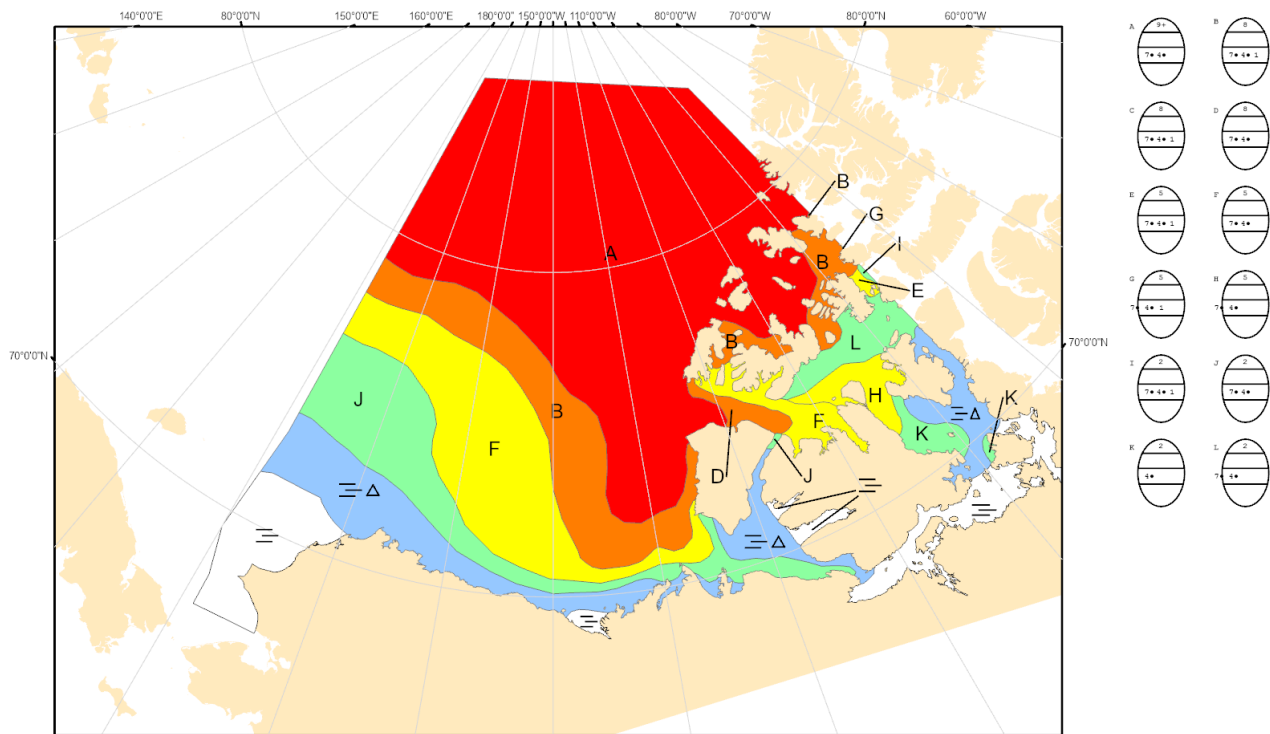
- 9-9+ tenths first-year and old ice.




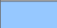

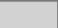



August 25-31

- 9-9+ tenths ice in the western section.
- 7-8 tenths ice with areas of 9-9+ tenths ice in the eastern section.

September 1-15

- 7-8 tenths ice with areas of 9-9+ tenths ice in the western section.
- 4-6 tenths ice with areas of 7-8 tenths ice in the eastern section.



COLOR CODES BASED ON TOTAL CONCENTRATION					
	ICE FREE		4-6 TENTHS		FAST ICE (TEN TENTHS)
	LESS THEN 1 TENTH		7-8 TENTHS		ICE SHELF
	1-3 TENTHS		9-10 TENTHS		UNDEFINED ICE

North American Ice Service /
Service des glaces de l'Amérique du Nord
ICE FORECAST - 30 DAY
PRÉVISIONS DES GLACES - 30 JOURS
VALID/VALIDE: 15 SEP/SEPT 2025