

FECN14 CWIS 011800

THIRTY DAY ICE OUTLOOK FOR THE WESTERN AND CENTRAL ARCTIC FOR OCTOBER ISSUED BY ENVIRONMENT CANADA ON 1 OCTOBER 2025. THE NEXT 30 DAY OUTLOOK WILL BE ISSUED ON 15 OCTOBER 2025.

Summary for September 9-22.

Average air temperatures were above normal except near to below normal along the western and northern Alaskan coasts and in the extreme southwestern Beaufort Sea.

Ice extent is greater than normal, including greater than normal multi-year ice in parts of the southern Beaufort Sea, including along the west coast of Banks Island. Ice melt is faster and more extensive than normal across most of the northwestern and central Beaufort Sea. Faster and more extensive ice melt was also observed over parts of the southwestern Arctic Ocean between 75°N and 78.5°N, including less multi-year ice. In the western Arctic Archipelago, ice extent is generally below normal, including below normal multi-year ice in most areas except in parts of Parry Channel (including McClure Strait) where there is more multi-year ice than normal. Elsewhere, ice melt and ice extent is near normal.

Weather forecast for October 1-31.

Air temperatures are forecast to be near to below normal along the northern and western Alaskan Coasts and in the southern Beaufort Sea. Elsewhere, air temperatures are forecast to be above normal.

Southeastern Beaufort Sea.

October 1-8

- Bergy water with areas of 1-3 tenths new, first-year and multi-year ice in the extreme northwestern section.
- 1-3 tenths new, first-year and old ice with areas of 4-6 tenths new, first-year and multi-year ice west of Banks Island.
- Elsewhere, bergy water with occasional areas of 1-3 tenths new ice along parts of the coasts.

October 9-15

- 4-6 tenths new, grey, second-year and multi-year ice with areas of 9-9+ tenths grey, second-year and multi-year ice in the northwestern section and west of Banks Island.
- 7-8 tenths new ice along parts of the coasts.
- Elsewhere, bergy water with occasional areas of 1-3 tenths new, second-year and multi-year ice.

October 16-25

- 7-8 tenths grey, second-year and multi-year ice with areas of 9-9+ tenths grey-white, second-year and multi-year ice in the northwestern section and west of Banks Island.
- 7-8 tenths new and grey ice along parts of the coasts.
- Elsewhere, 4-6 tenths new and grey ice with areas of 7-8 tenths grey, second-year and multi-year ice.

October 26-31

- 9-9+ tenths grey-white, second-year and multi-year ice west of Banks Island.
- 9-9+ tenths new and grey ice along the coasts.

- Elsewhere, 7-8 tenths new and grey ice with areas of 9-9+ tenths grey, second-year and multi-year ice.

Amundsen Gulf.

October 1-11

- Bergy water

October 12-19

- Bergy water with areas of 1-3 tenths new ice along parts of the coasts.

October 20-27

- 1-3 tenths new ice with areas of 7-8 tenths new ice.

October 28-31

- 1-3 tenths new and grey ice in the southern section.
- Elsewhere, 7-8 tenths new and grey ice with areas of 9-9+ tenths new and grey ice.

Prince of Wales Strait.

October 1-8

- Bergy water with areas of 4-6 tenths new and multi-year ice in the extreme northern section.
- Elsewhere, bergy water.

October 9-16

- 7-8 tenths new and multi-year ice in the northern section.
- Elsewhere, bergy water with areas of 1-3 tenths new ice.

October 17-24

- 9-9+ tenths new, grey and multi-year ice in the northern section.
- 4-6 tenths new ice including a trace of multi-year ice in the southern section.

October 25-31

- 9-9+ tenths grey-white and multi-year ice in the northern section.
- 9-9+ tenths new and grey ice including a trace of multi-year ice in the southern section.

Northern Alaskan Coast.

October 1-10

- 4-6 tenths new, second-year and multi-year ice in the extreme northeastern section.
- Bergy water with occasional areas of 1-3 tenths multi-year ice elsewhere in the extreme northern section.
- Elsewhere, bergy water.

October 11-18

- 4-6 tenths new, second-year and multi-year ice with areas of 7-8 tenths new, second-year and multi-year ice in the eastern section.
- Bergy water with areas of 4-6 tenths new, second-year and multi-year ice elsewhere in the extreme northern section.
- Bergy water with areas of 4-6 tenths new and grey ice along parts of the coast.
- Elsewhere, bergy water.

October 19-25

- 7-8 tenths new, grey, second-year and multi-year ice with areas of 9-9+ tenths new, grey, second-year and multi-year ice in the eastern section.

- Bergy water with areas of 4-6 tenths new, grey, second-year and multi-year ice elsewhere in the extreme northern section.
- 7-8 tenths new and grey ice along the coast.
- Elsewhere, bergy water.

October 26-31

- 7-8 tenths new, grey, second-year and multi-year ice with areas of 9-9+ tenths new, grey, second-year and multi-year ice in the eastern section.
- 4-6 tenths new, grey, second-year and multi-year ice in the northern section.
- 9-9+ tenths new and grey ice along the coast.
- Elsewhere, bergy water with areas of 4-6 tenths new ice.

Western Alaskan Coast.

October 1-5

- Bergy water in the extreme northeastern section.
- Elsewhere, ice free except open water along the coast.

October 6-12

- Bergy water in the extreme northeastern section.
- Elsewhere, open water with areas of 4-6 tenths new ice along parts of the coast in the eastern section.

October 13-19

- Bergy water in the extreme northeastern section.
- Elsewhere, open water with areas of 7-8 tenths new and grey ice along parts of the coast in the eastern section.

October 20-31

- Bergy water in the extreme northeastern section.
- Elsewhere, open water with areas of 9-9+ tenths new and grey ice along the coast in the eastern section.
- Open water with areas of 1-3 tenths new ice along the coast in the western section.

Northern Beaufort Sea south of 75°N.

October 1-6

- 9-9+ tenths new ice in the extreme northwestern section.
- 9-9+ tenths new, second-year and multi-year ice in the extreme eastern section.
- 4-6 tenths new, second-year and multi-year ice with areas of 7-8 tenths new, second-year and multi-year ice in the southwestern section.
- Elsewhere, bergy water with areas of 1-3 tenths new, second-year and multi-year ice.

October 7-14

- 9-9+ tenths new, grey, second-year and multi-year ice in the extreme northwestern and extreme eastern sections.
- 4-6 tenths new, grey, second-year and multi-year ice with areas of 7-8 tenths new, grey, second-year and multi-year ice in the southwestern section.
- Elsewhere, 4-6 tenths new, grey, second-year and multi-year ice.

October 15-22

- 9-9+ tenths grey, grey-white, second-year and multi-year ice in the extreme northwestern and extreme eastern sections.

- Elsewhere, 7-8 tenths new, grey, second-year and multi-year ice.

October 23-31

- 9-9+ tenths grey-white, second-year and multi-year ice in the northwestern and eastern sections.
- Elsewhere, 9-9+ tenths new, grey, second-year and multi-year ice.

Arctic Ocean north of 75°N.

October 1-10

- 7-8 tenths new, grey, second-year and multi-year ice in the southwestern section.
- 9-9+ tenths grey, multi-year and second-year ice in the northern and eastern sections.

October 11-19

- 9-9+ tenths new, grey, second-year and multi-year ice in the southwestern section.
- 9-9+ tenths grey, grey-white, multi-year and second-year ice in the northern and eastern sections.

October 20-27

- 9-9+ tenths grey-white, second-year and multi-year ice.

October 28-31

- 9-9+ tenths first-year, second-year and multi-year ice.

Coronation Gulf.

October 1-25

- Bergy water.

October 26-31

- Bergy water except areas of 1-3 tenths new ice along parts of the coasts.

Queen Maud Gulf.

October 1-19

- Bergy water.

October 20-27

- Bergy water with areas of 4-6 tenths new ice along parts of the coasts.

October 28-31

- Bergy water with areas of 9-9+ tenths new and grey ice along the coasts.

Victoria Strait – Larsen Sound.

October 1-19

- Bergy water with a risk of occasional areas of 1-3 tenths new and second-year ice including a trace of multi-year ice in near the entrance to McClintock channel.

October 20-27

- 4-6 tenths new and second-year ice including a trace of multi-year ice in the extreme northwestern section.
- Bergy water with areas of 1-3 tenths new ice along the coasts.

October 27-31

- 7-8 tenths new, grey and second-year ice including a trace of multi-year ice in the northwestern section.
- Elsewhere, 1-3 tenths new ice areas of 4-6 tenths new and grey ice.

Peel Sound.

October 1-5

- Bergy water with occasional areas of 1-3 tenths new and second-year ice including a trace of multi-year ice in the extreme northern section.
- Elsewhere, bergy water.

October 6-17

- 4-6 tenths new, grey, second-year and multi-year ice with areas of 7-8 tenths new, grey, second-year and multi-year ice in the extreme northern section.
- Elsewhere, bergy water with occasional areas of 1-3 tenths new ice.

October 18-27

- 7-8 tenths new, grey, second-year and multi-year ice in the extreme northern section.
- Elsewhere, bergy water with areas of 1-3 tenths new ice.

October 28-31

- 7-8 tenths grey, second-year and multi-year ice in the northern section.
- 7-8 tenths new and grey ice in the southern section.

M'Clintock Channel.

October 1-10

- 1-3 tenths new, second-year and multi-year ice in the northern section.
- 4-6 tenths new and second-year ice including a trace of multi-year ice in the southwestern section along the coast of Victoria Island.
- Elsewhere, bergy water with areas of 1-3 tenths second-year ice including a trace of multi-year ice.

October 11-19

- 9-9+ tenths new, second-year and multi-year ice in the northern section and in the southwestern section along the coast of Victoria Island.
- Elsewhere, 4-6 tenths new and second-year ice including a trace of multi-year ice.

October 20-27

- 7-8 tenths new and second-year ice including a trace of multi-year ice in the extreme southern section.
- Elsewhere, 9-9+ tenths grey, second-year and multi-year ice.

October 28-31

- 7-8 tenths grey and second-year ice including a trace of multi-year ice in southern section.
- Elsewhere, 9-9+ tenths grey-white, second-year and multi-year ice.

Viscount Melville Sound.

October 1-8

- 4-6 tenths new, second-year and multi-year ice with areas of 9-9+ tenths new, grey, second-year and multi-year ice in the western section.
- 1-3 tenths new, second-year and multi-year ice with areas of 7-8 tenths new, grey, second-year and multi-year ice in the eastern section.

October 9-16

- 7-8 tenths new, grey, second-year and multi-year ice with areas of 9-9+ tenths grey, second-year and multi-year ice.

October 17-25

- 9-9+ tenths grey, second-year and multi-year ice.

October 26-31

- 9-9+ tenths grey-white, second-year and multi-year ice.

M'Clure Strait.

October 1-10

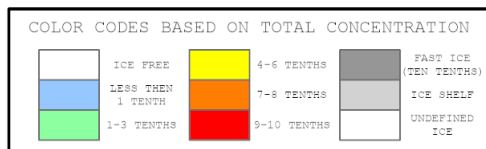
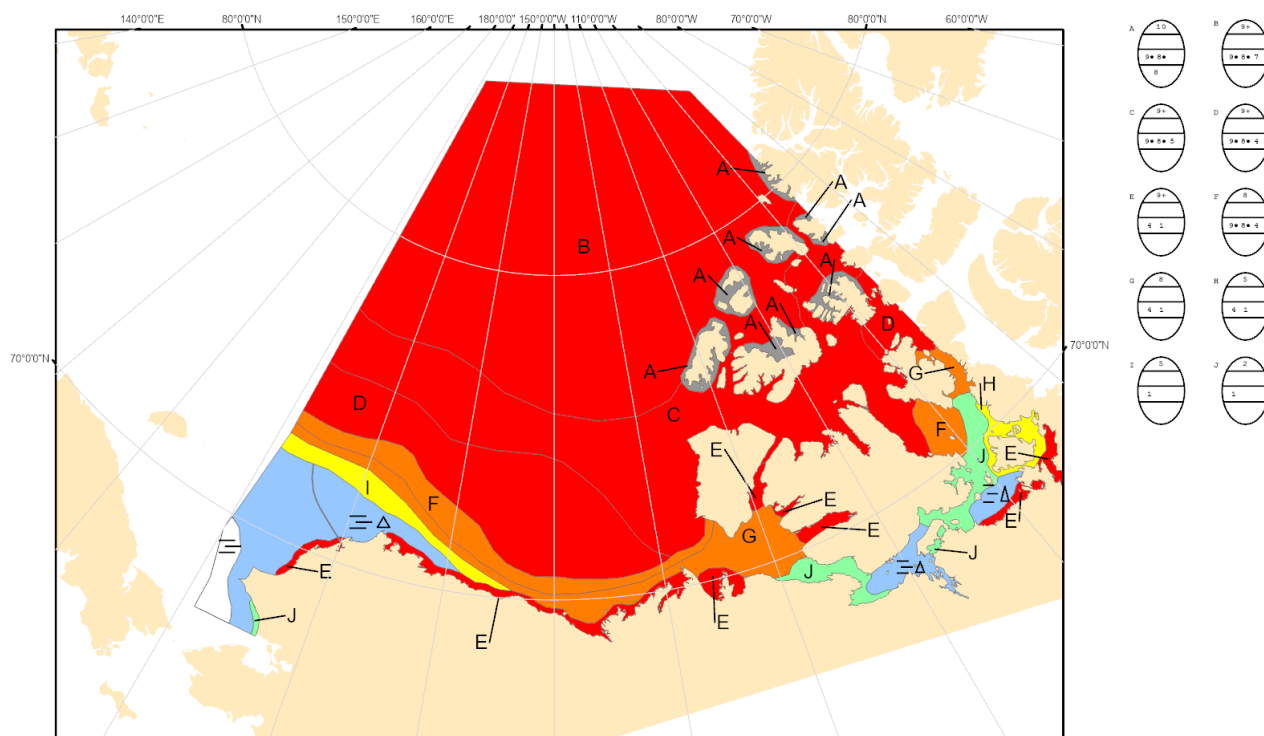
- 7-8 tenths new, second-year and multi-year ice in the extreme eastern and southern sections.
- Elsewhere, 9-9+ tenths new, grey, second-year and multi-year ice.

October 11-27

- 9-9+ tenths grey, second-year and multi-year ice.

October 28-31

- 9-9+ tenths grey-white, second-year and multi-year ice.



North American Ice Service /
Service des glaces de l'Amérique du Nord
ICE FORECAST - 30 DAY
PRÉVISIONS DES GLACES - 30 JOURS
VALID/VALIDE: 31 OCT/OCT 2025