

U.S. National Ice Center

NOAA Satellite Operations Facility
4231 Suitland Road
Suitland, MD 20746

PRESS RELEASE

April 11, 2017

FOR IMMEDIATE RELEASE

Contact: Evelyn V. Bowens

NIC.PAO@noaa.gov

301-817-3975

Icebergs B-42 and B-43 Icebergs Separate from Thwaites Glacier Calving Front

April 11, 2017 SUITLAND, MD —The U.S National Ice Center (USNIC) identified two new icebergs that calved from Thwaites Glacier in the Amundsen Sea. The icebergs had been perched on the edge of Thwaites glacier for a few years, but finally began to separate from the ice shelf.

B-42 is located at 74°50' South, 106°48' West, in the Amundsen Sea. The iceberg measures 17 nautical miles on its longest axis and 5 nautical miles on its widest axis. B-43 is located at 74°51' South, 107°10' West, in the Amundsen Sea. The iceberg measures 10 nautical miles on its longest axis and 5 nautical miles on its widest axis. USNIC analyst Chris Readinger confirmed B-42 and B-43 using the Sentinel-1A image shown below.

Iceberg names are derived from the Antarctic quadrant in which they were originally sighted. The quadrants are divided counter-clockwise in the following manner:

A = 0-90W (Bellingshausen/Weddell Sea)

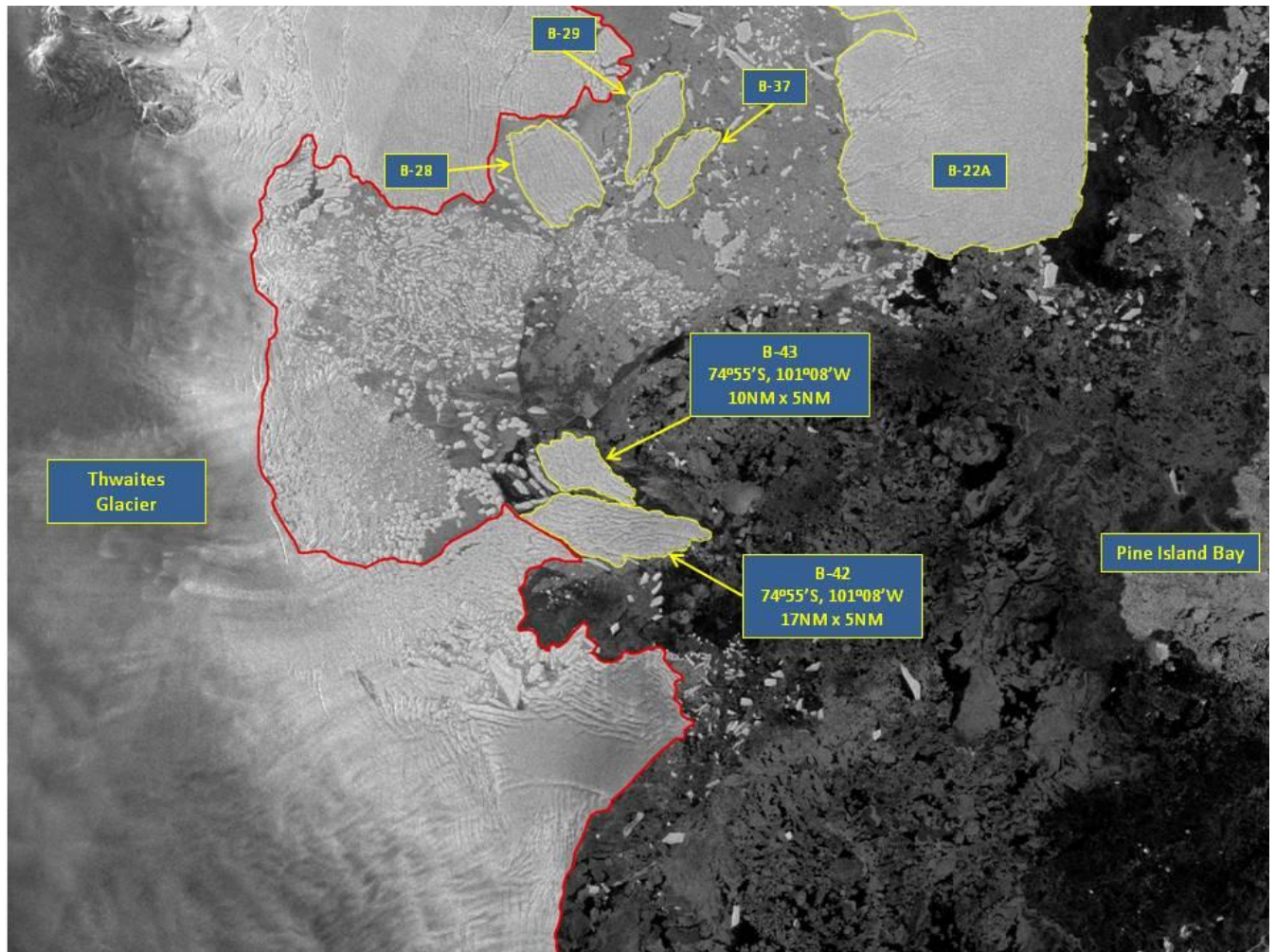
B = 90W-180 (Amundsen/Eastern Ross Sea)

C = 180-90E (Western Ross Sea/Wilkesland)

D = 90E-0 (Amery/Eastern Weddell Sea)

When first sighted, an iceberg's point of origin is documented by the USNIC. The letter of the quadrant, along with a sequential number, is assigned to the iceberg. For example, C-19 is sequentially the 19th iceberg tracked by the USNIC in Antarctica between 180-90E (Quadrant C). Icebergs with letter suffixes have calved from already named icebergs, where the letters are added in sequential order. For example, C-19D, is the 4th iceberg to calve off the original C-19 iceberg. Iceberg positions are analyzed weekly and are available on the USNIC webpage at: <https://usicecenter.gov/Products/AntarcIcebergs>

The U.S. National Ice Center is a multi-agency center operated by the Navy, NOAA, and Coast Guard and provides global to tactical scale ice and snow products, ice forecasting, and other environmental intelligence services for the United States government.



SENTINEL-1A image of B-42 and B-43 dated April 4th 2017

(Sentinel-1 Imagery Copyright © 2017 ESA. All rights reserved.)

For more information, please contact:

U.S. National Ice Center

Command Duty Officer

E-mail: nic.cdo@noaa.gov

Voice: (301) 943-6977

Visit us on Facebook at: <https://www.facebook.com/usnatic/>

