

## **U.S. National Ice Center**

NOAA Satellite Operations Facility  
4231 Suitland Road  
Suitland, MD 20746

# **PRESS RELEASE**

**April 27, 2017**

### **FOR IMMEDIATE RELEASE**

Contact: Evelyn V. Bowens

[NIC.PAO@noaa.gov](mailto:NIC.PAO@noaa.gov)

301-817-3975

## **Iceberg C-34 Calves off the Ninnis ice shelf in the eastern Wilkesland Sea**

April 27, 2017 SUITLAND, MD —The U.S. National Ice Center (USNIC) identified a new iceberg that calved from the Ninnis Ice Shelf in Antarctica. Analysts at the USNIC have been monitoring the iceberg since January 2017. Using RADARSAT imagery from 26 Apr 2017, USNIC analysts were able to identify the iceberg drifting west towards the Mertz Glacier.

C-34 is located at 67°54' South, 147°06' East, in the eastern Wilkesland Sea. The iceberg measures 11 nautical miles on its longest axis and 5 nautical miles on its widest axis.

Iceberg names are derived from the Antarctic quadrant in which they were originally sighted. The quadrants are divided counter-clockwise in the following manner:

A = 0-90W (Bellingshausen/Weddell Sea)

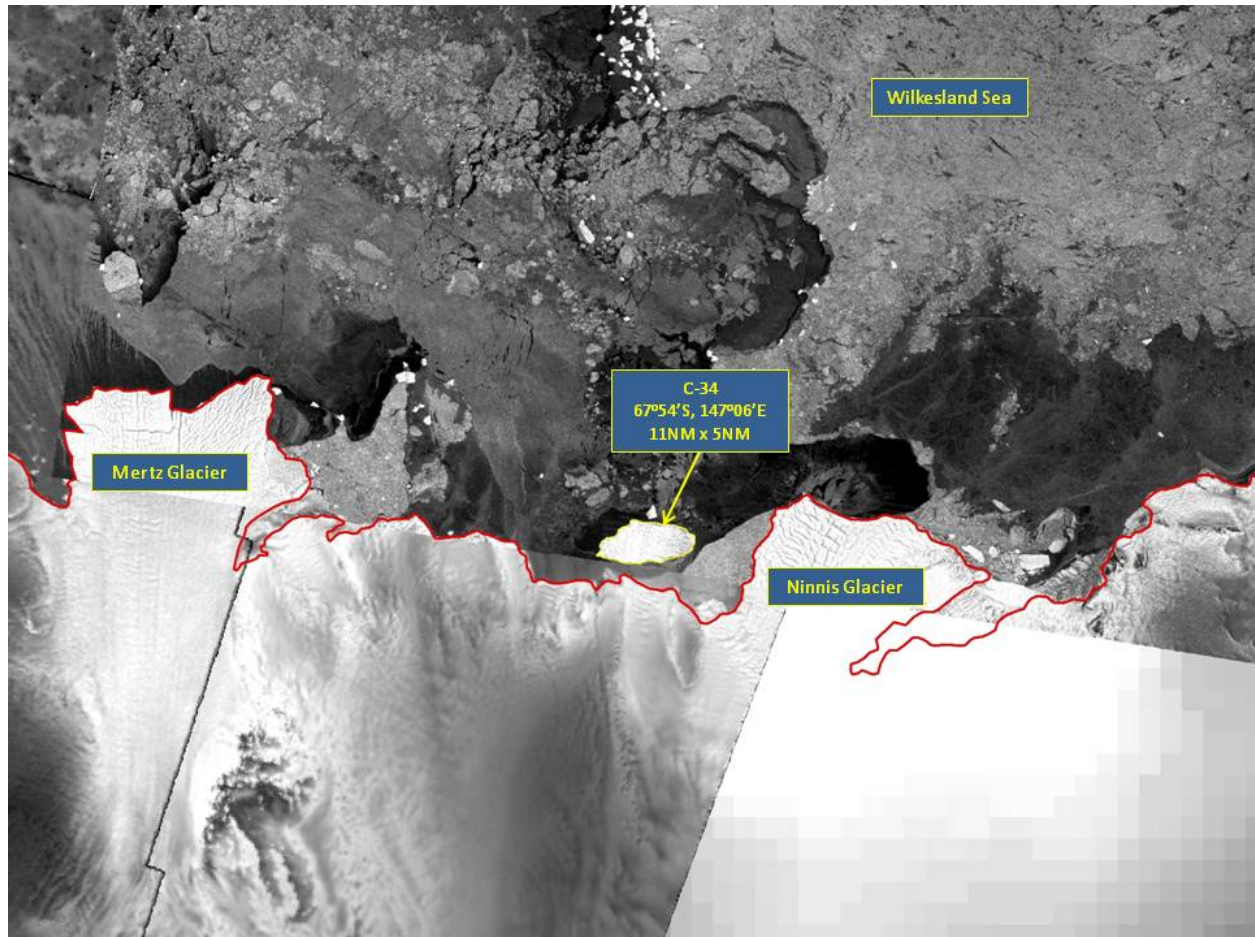
B = 90W-180 (Amundsen/Eastern Ross Sea)

C = 180-90E (Western Ross Sea/Wilkesland)

D = 90E-0 (Amery/Eastern Weddell Sea)

When first sighted, an iceberg's point of origin is documented by the USNIC. The letter of the quadrant, along with a sequential number, is assigned to the iceberg. For example, C-19 is sequentially the 19th iceberg tracked by the USNIC in Antarctica between 180-90E (Quadrant C). Icebergs with letter suffixes have calved from already named icebergs, where the letters are added in sequential order. For example, C-19D, is the 4th iceberg to calve off the original C-19 iceberg. Iceberg positions are analyzed weekly and available on the USNIC webpage at: <https://usicecenter.gov/Products/AntarcIcebergs>

The U.S. National Ice Center is a multi-agency center operated by the Navy, NOAA and Coast Guard and provides global to tactical scale ice and snow products, ice forecasting, and other environmental intelligence services for the United States government.



RS-2 and Sentinel-1 image of C-34 dated April 26, 2017

(Sentinel-1 Imagery Copyright © 2017 ESA. All rights reserved. Radarsat Imagery Copyright © 2017 MacDonald, Dettwiler and Associates Ltd. All rights reserved.)

For more information, please contact:  
U.S. National Ice Center  
Command Duty Officer  
E-mail: [nic.cdo@noaa.gov](mailto:nic.cdo@noaa.gov)  
Voice: (301) 943-6977  
Visit us on Facebook at: <https://www.facebook.com/usnatice/>

