

U.S. National Ice Center

PRESS RELEASE

FOR IMMEDIATE RELEASE

Contact: LTJG Bryan R. Brasher, NOAA

NIC.PAO@noaa.gov

301-943-6977



Iceberg B-47 Has Calved from Getz Ice Shelf in the Amundsen Sea

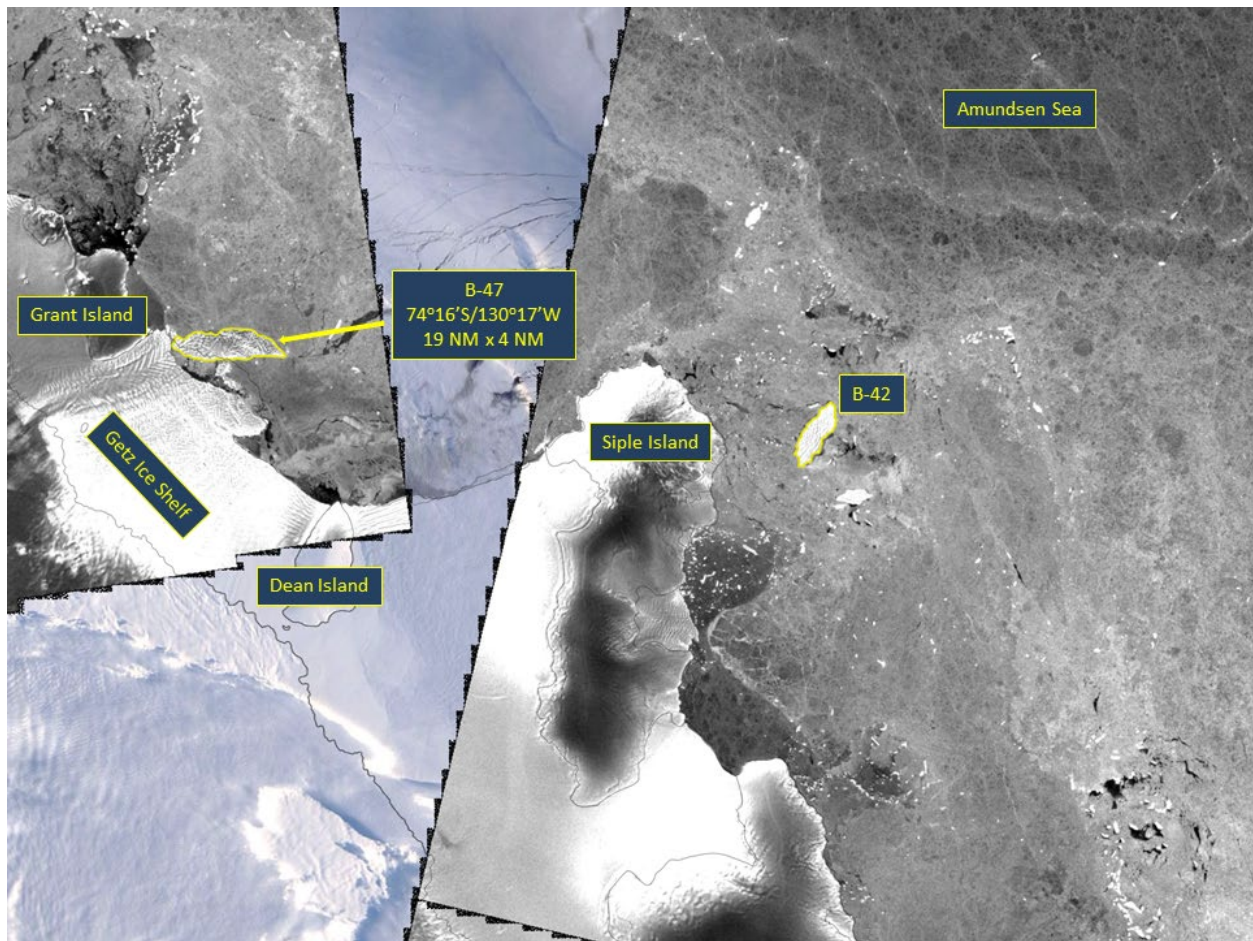
18SEP2019, SUITLAND, MD — The U.S. National Ice Center (USNIC) named a new iceberg that calved from the Getz Ice Shelf, West of Siple Island, on September 6, 2019. B-47 is located at 74° 16' South, 130° 17' West in the South Pacific Ocean, specifically the Amundsen Sea. The iceberg measures 19 nautical miles on its longest axis and 5 nautical miles on its widest axis. The iceberg was discovered and confirmed by USNIC analyst Thomas Holden using the Sentinel-1B image below.

Iceberg names are derived from the Antarctic quadrant in which they were originally calved. The quadrants are divided counter-clockwise in the following manner:

- A = 0-90W (Bellingshausen/Weddell Sea)
- B = 90W-180 (Amundsen/Eastern Ross Sea)
- C = 180-90E (Western Ross Sea/Wilkesland)
- D = 90E-0 (Amery/Eastern Weddell Sea)

When first sighted, an iceberg's point of origin is documented by USNIC. The letter of the quadrant, along with a sequential number, is assigned to the iceberg. For example, C-19 is sequentially the 19th iceberg tracked by USNIC in Antarctica between 180-90E (Quadrant C). Icebergs with letter suffixes have calved from already named icebergs, where the letters are added in sequential order. For example, C-19D is the 4th iceberg to calve off the original C-19 iceberg.

Iceberg positions are analyzed weekly and are available on the USNIC webpage at:
<https://usicecenter.gov/Products/AntarcIcebergs>



Sentinel-1B and MODIS image showing new iceberg B-47

USNIC is a multi-agency center—subordinate to Naval Meteorology and Oceanography Command—operated by the Navy, NOAA, and Coast Guard which provides global to tactical scale ice and snow products, ice forecasting, and related environmental intelligence services for the United States government.

Naval Meteorology and Oceanography Command directs and oversees more than 2,500 globally-distributed military and civilian personnel who collect, process and exploit environmental information to assist Fleet and Joint Commanders in all warfare areas to make better decisions faster than the adversary.

For more information, please contact:

U.S. National Ice Center
Command Duty Officer
E-mail: nic.cdo@noaa.gov
Voice: (301) 943-6977

Visit us on Facebook at: <https://www.facebook.com/usnatice/>

