



**U.S. National Ice Center**  
NOAA Satellite Operations Facility  
4231 Suitland Road  
Suitland, MD 20746

## **PRESS RELEASE**

### **FOR IMMEDIATE RELEASE**

Contact: LTJG Bryan R. Brasher, NOAA  
[NIC.PAO@noaa.gov](mailto:NIC.PAO@noaa.gov)  
301-817-3934

## **Amery Ice Shelf Calves a New Iceberg (D-28)**

04OCT2019, Suitland, MD — On September 25, 2019, the U.S. National Ice Center (USNIC) named a new iceberg when it calved from the western half of the Amery Ice Shelf. D-28 is located at 68° 33' South, 72° 13' East in the Prydz Bay of the Amery Sea, south of the Indian Ocean. It calved from the shelf around 03:00 UTC on the 25<sup>th</sup>. The iceberg measures 30 nautical miles on its longest axis and 19 nautical miles on its widest axis. The iceberg was discovered and confirmed by USNIC analyst William Walter using the Sentinel-1A image below (Figure 1).

Iceberg names are derived from the Antarctic quadrant in which they were originally sighted. The quadrants are divided counter-clockwise in the following manner:

A = 0-90W (Bellingshausen/Weddell Sea)	C = 180-90E (Western Ross Sea/Wilkes land)
B = 90W-180 (Amundsen/Eastern Ross Sea)	D = 90E-0 (Amery/Eastern Weddell Sea)

When first sighted, an iceberg's point of origin is documented by USNIC. The letter of the quadrant, along with a sequential number, is assigned to the iceberg. For example, D-28 is sequentially the 28th iceberg tracked by the USNIC in Antarctica between 90E-0 (Quadrant D).

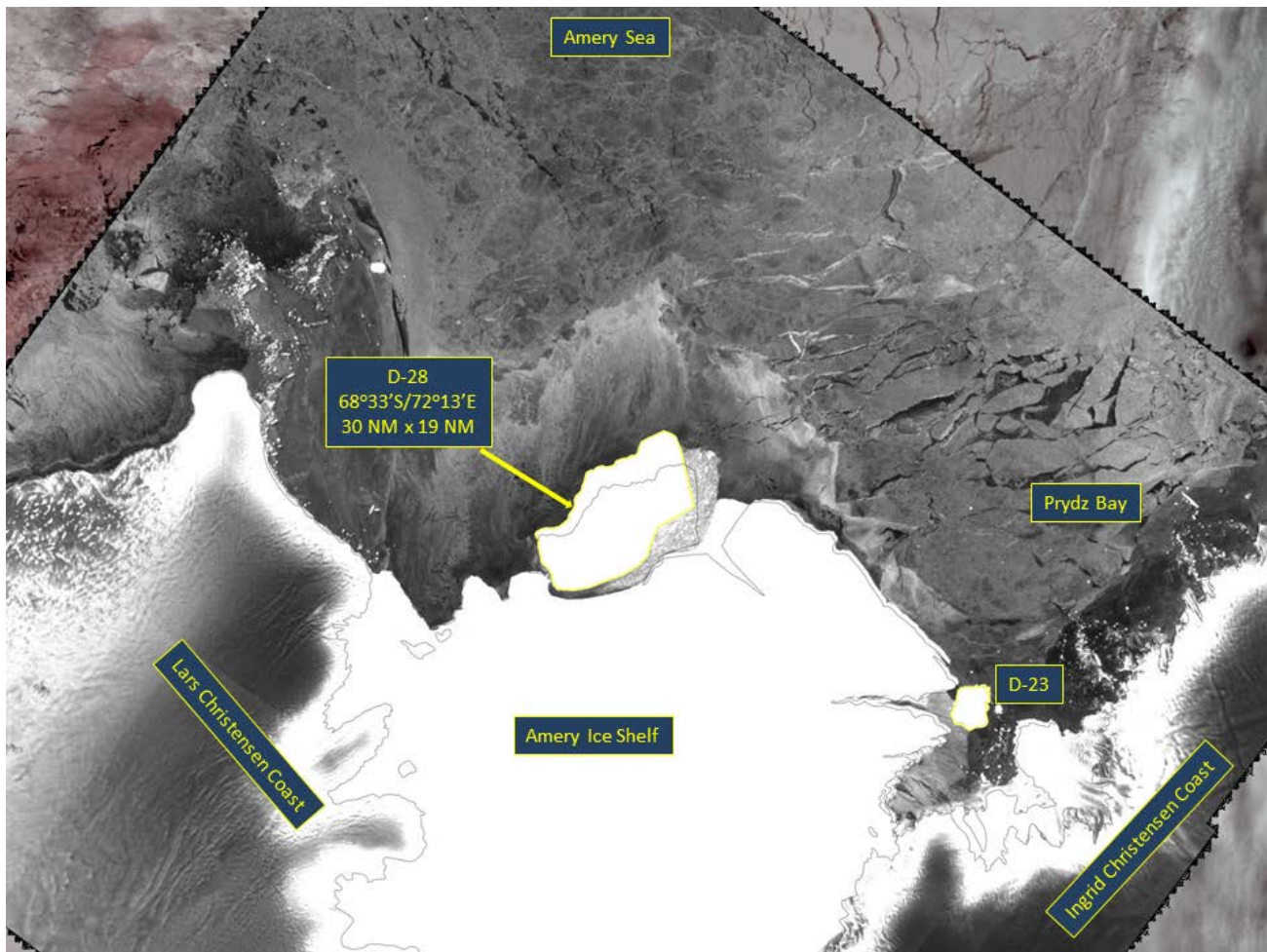


Figure 1: Sentinel-1A image from 25 September (1528Z) showing new iceberg D-28 overlaid on MODIS from 25 September (1010Z), near iceberg D-23 in the Amery Sea (Sentinel-1 Imagery courtesy European Space Agency)

To access daily products, weekly products, archival data and much more of USNIC data in various formats, visit the USNIC webpage at: [http://www.natice.noaa.gov/Main\\_Products.htm](http://www.natice.noaa.gov/Main_Products.htm)

For more information, please contact:

U.S. National Ice Center  
Command Duty Officer  
E-mail: [nic.cdo@noaa.gov](mailto:nic.cdo@noaa.gov)  
Voice: (301) 817-3975

Facebook: @usnatice  
Twitter: @usnatice



**The U.S. National Ice Center is a tri-agency center operated by the Navy, NOAA, and Coast Guard and provides global to tactical scale ice and snow products, ice forecasting, and related environmental intelligence services for the United States government.**