



U.S. National Ice Center
NOAA Satellite Operations Facility
4231 Suitland Road
Suitland, MD 20746

PRESS RELEASE

FOR IMMEDIATE RELEASE

Contact: LT Bryan R. Brasher, NOAA
NIC.PAO@noaa.gov
301-817-3934

Iceberg B-49 Calves from Pine Island Glacier

10FEB2020, Suitland, MD — On February 10th 2020, the U.S. National Ice Center (USNIC) named a new iceberg that meets the criteria for tracking by the USNIC. This iceberg from Pine Island Glacier is part of a larger calving event that mostly broke apart into smaller pieces. Pine Island Glacier is just east of Thwaites Glacier in West Antarctica. B-49 is located at 75°3' South, 101°19' West and measures 10 nautical miles on its longest axis and 5 nautical miles on its widest axis with an area of 34 square nautical miles. B-49 was spotted by Jan Lieser of the Australian Bureau of Meteorology and confirmed by USNIC analyst Chris Readinger in the Sentinel-1B image shown below (Figure 1). This calving is the latest in a series – beginning in 2000 - of calving events from Pine Island Glacier that are increasing in frequency.

Iceberg names are derived from the Antarctic quadrant in which they were originally sighted. The quadrants are divided counter-clockwise in the following manner:

A = 0-90W (Bellingshausen/Weddell Sea)	C = 180-90E (Western Ross Sea/Wilkes land)
B = 90W-180 (Amundsen/Eastern Ross Sea)	D = 90E-0 (Amery/Eastern Weddell Sea)

When first sighted, an iceberg's point of origin is documented by USNIC. The letter of the quadrant, along with a sequential number, is assigned to the iceberg. For example, D-28 is sequentially the 28th iceberg tracked by the USNIC in Antarctica between 90E-0 (Quadrant D).

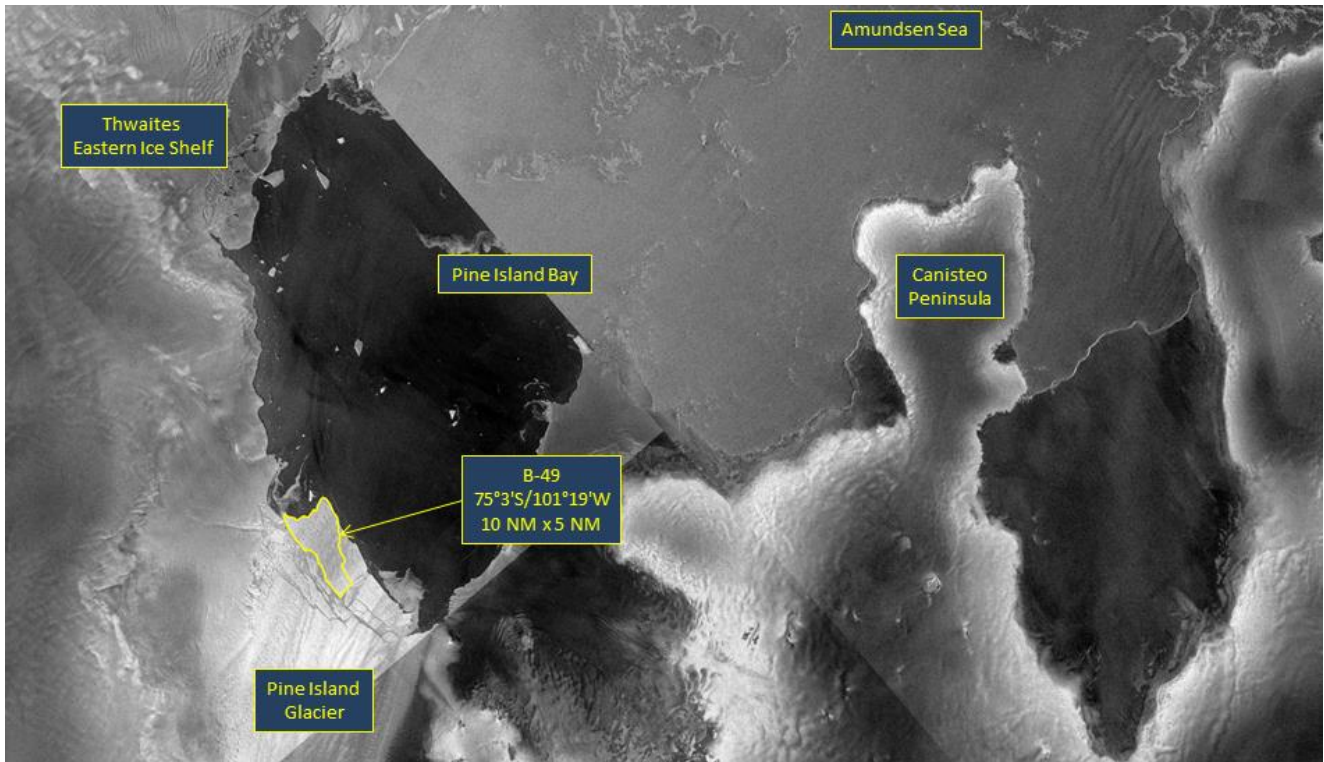


Figure 1: Composite Sentinel-1B images from 9 February (0403Z) and 10 February (0846Z) showing new iceberg B-49. (Sentinel-1 Imagery courtesy of European Space Agency)

To access daily products, weekly products, archival data and much more of USNIC data in various formats, visit the USNIC webpage at: http://www.natice.noaa.gov/Main_Products.htm

For more information, please contact:

U.S. National Ice Center
Command Duty Officer
E-mail: nic.cdo@noaa.gov
Voice: (301) 817-3975

Facebook: @usnatice
Twitter: @usnatice



The U.S. National Ice Center is a tri-agency center operated by the Navy, NOAA, and Coast Guard and provides global to tactical scale ice and snow products, ice forecasting, and related environmental intelligence services for the United States government.