



U.S. National Ice Center
NOAA Satellite Operations Facility
4231 Suitland Road
Suitland, MD 20746

PRESS RELEASE

FOR IMMEDIATE RELEASE

Contact: LT Bryan R. Brasher, NOAA
NIC.PAO@noaa.gov
301-817-3934

Iceberg B-50 Calves from Getz Ice Shelf

24APR2020, Suitland, MD — On 22 April, the U.S. National Ice Center (USNIC) named a new iceberg that meets the criteria for tracking. The iceberg B-50 calved from the eastern edge of the Getz Ice Shelf in the Amundsen Sea. B-50 is located at 73°44' South, 128°41' West and measures 15 nautical miles on its longest axis and 6 nautical miles on its widest axis with an area of approximately 62 square nautical miles. B-50 was spotted by USNIC Ice Analyst Michael Lowe and confirmed by Master Ice Analyst Chris Readinger in the Sentinel-1B image shown below.

Iceberg names are derived from the Antarctic quadrant in which they were originally sighted. The quadrants are divided counter-clockwise in the following manner:

A = 0-90W (Bellingshausen/Weddell Sea) C = 180-90E (Western Ross Sea/Wilkes land)
B = 90W-180 (Amundsen/Eastern Ross Sea) D = 90E-0 (Amery/Eastern Weddell Sea)

When first sighted, an iceberg's point of origin is documented by USNIC. The letter of the quadrant, along with a sequential number, is assigned to the iceberg. For example, D-28 is sequentially the 28th iceberg tracked by the USNIC in Antarctica between 90E-0 (Quadrant D).

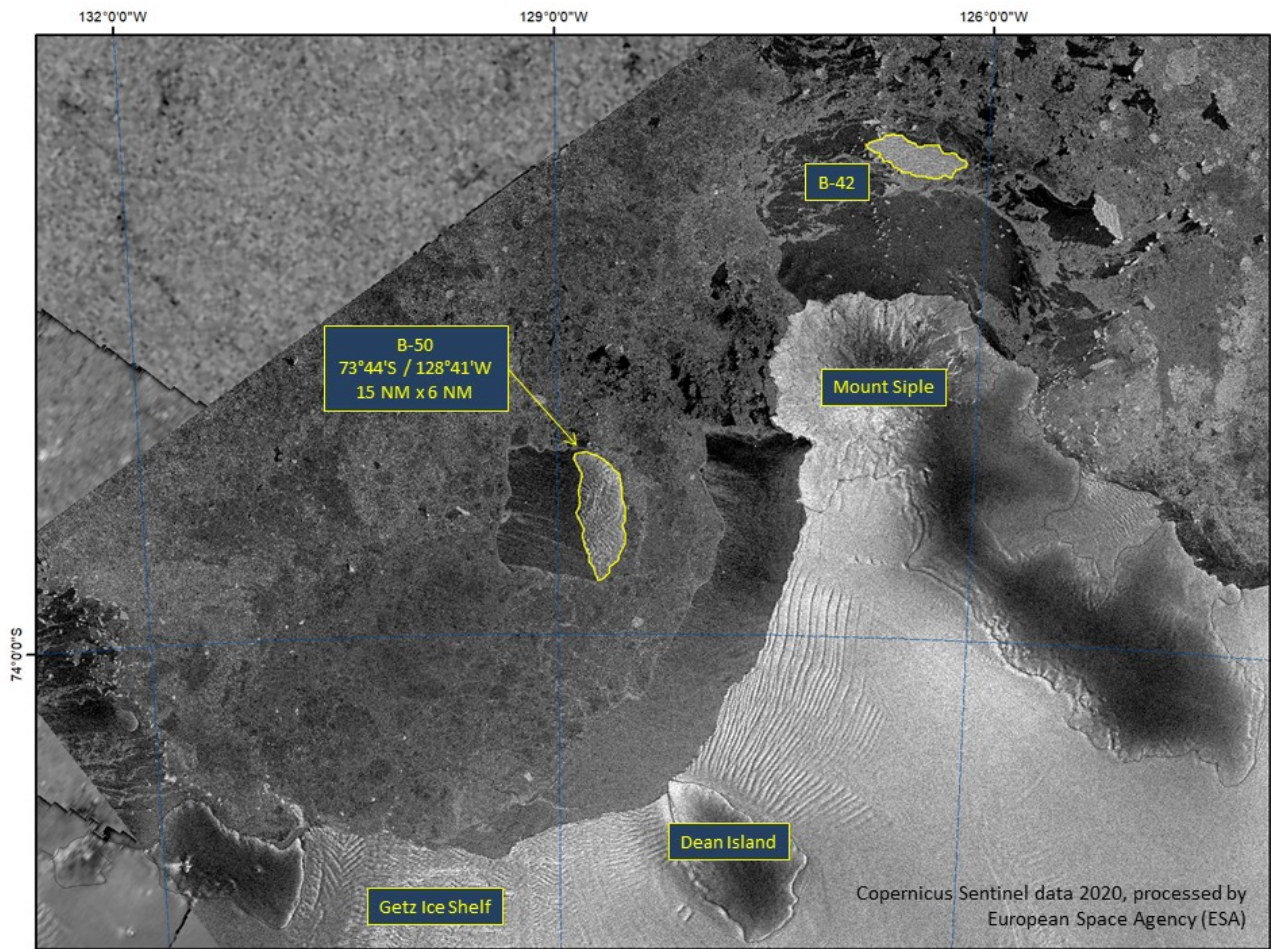


Figure 1: Sentinel-1B image from 23 April (1105Z) showing new iceberg B-50 in the Amundsen Sea off the coast of West Antarctica. (Sentinel-1 Imagery courtesy of European Space Agency)

To access daily products, weekly products, archival data and much more of USNIC data in various formats, visit the USNIC webpage at: http://www.natice.noaa.gov/Main_Products.htm

For more information, please contact:

U.S. National Ice Center
 Command Duty Officer
 E-mail: nic.cdo@noaa.gov
 Voice: (301) 817-3975

Facebook: @usnatice
 Twitter: @usnatice



The U.S. National Ice Center is a tri-agency center operated by the Navy, NOAA, and Coast Guard and provides global to tactical scale ice and snow products, ice forecasting, and related environmental intelligence services for the United States government.