



## **U.S. National Ice Center**

NOAA Satellite Operations Facility  
4231 Suitland Road  
Suitland, MD 20746

## **PRESS RELEASE**

### **FOR IMMEDIATE RELEASE**

Contact: LT Falon Essary, NOAA  
[NIC.PAO@noaa.gov](mailto:NIC.PAO@noaa.gov)  
301-817-3934

## **Icebergs A-72 and A-73 Calve from Larsen-D Ice Shelf in the Weddell Sea**

19JAN2021, Suitland, MD — The Larsen-D Ice Shelf calved two more icebergs which are large enough to be named. The breakup occurred in mid-December 2020 from the northern part of Larsen-D approximately 150 nautical miles north of the recently named A-70 and A-71 icebergs. Similar to the A-70 and A-71 calving, it had been difficult to confirm whether these were icebergs large enough to be named or extremely old sea ice that had fasted to the ice shelf. Recent imagery showing surface topography typical of icebergs has allowed us to confirm these are indeed icebergs. The new iceberg A-72 is located at 69° 39' South, 60° 53' West measures 11 nautical miles on its longest axis and 4 nautical miles on its widest axis. The new iceberg A-73 is located at 69° 47' South, 60° 38' West and measures 9 nautical miles on its longest axis and 5 nautical miles on its widest axis.

A-72 and A-73 were first spotted by Adrian Luckman of Swansea University, and confirmed by USNIC Ice Analyst Chris Readinger using the Sentinel-1A image shown below.

Iceberg names are derived from the Antarctic quadrant in which they were originally sighted. The quadrants are divided counter-clockwise in the following manner:

A = 0-90W (Bellingshausen/Weddell Sea)      C = 180-90E (Western Ross Sea/Wilkesland)  
B = 90W-180 (Amundsen/Eastern Ross Sea)      D = 90E-0 (Amery/Eastern Weddell Sea)

When first sighted, an iceberg's point of origin is documented by USNIC. The letter of the quadrant, along with a sequential number, is assigned to the iceberg. For example, C-19 is sequentially the 19th iceberg tracked by USNIC in Antarctica between 180-90E (Quadrant C). Icebergs with letter suffixes have calved from already named icebergs, where the letters are added in sequential order. For example, C-19D is the 4th iceberg to calve off the original C-19 iceberg.

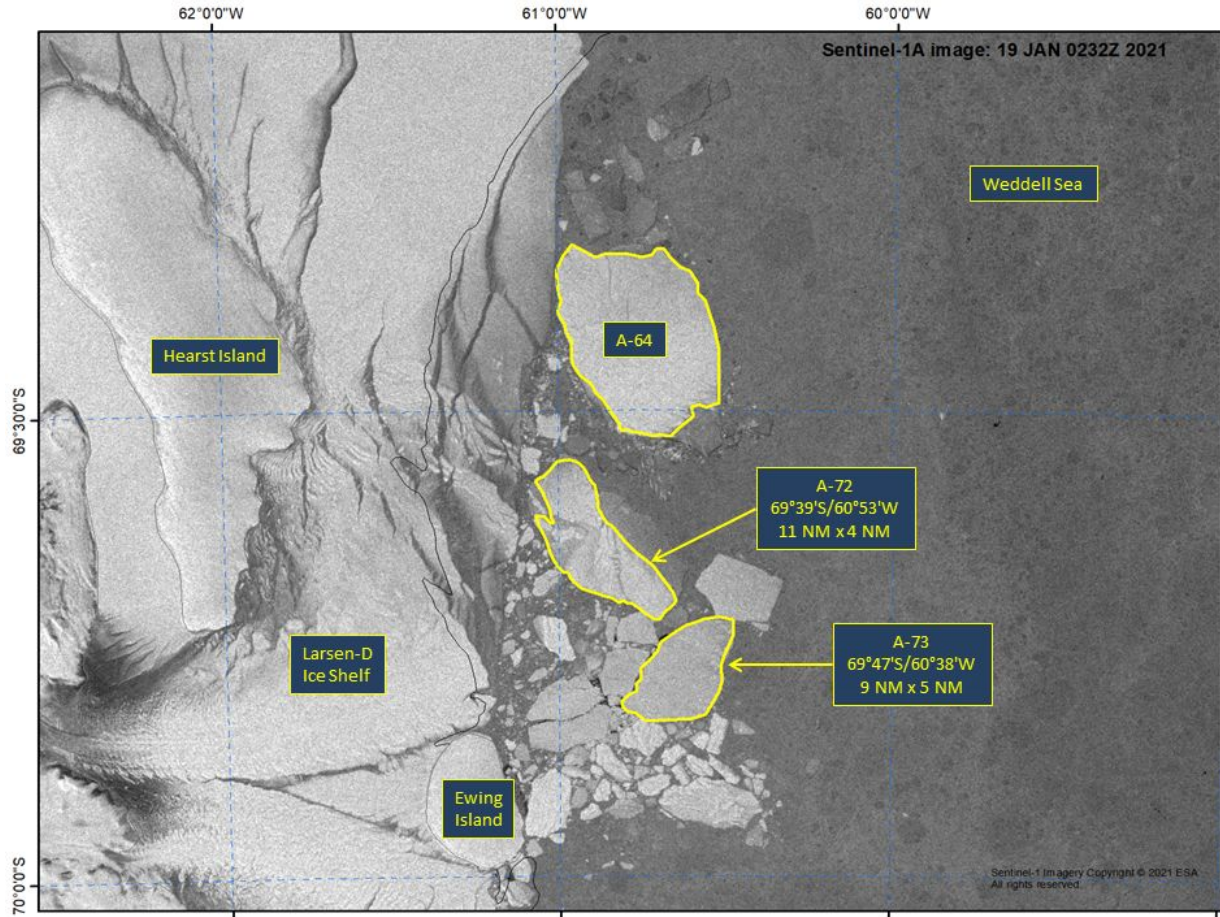


Figure 1: Sentinel-1A image of A-72 and A-73, January 19, 2021

For more information, please contact:  
U.S. National Ice Center Facebook: @usnatice  
Command Duty Officer Twitter: @usnatice  
E-mail: nic.cdo@noaa.gov  
Voice: (301) 943-6977



**The U.S. National Ice Center is a multi-agency center operated by the Navy, NOAA, and Coast Guard and provides global to tactical scale ice and snow products, ice forecasting, and related environmental intelligence services for the United States government.**