



U.S. National Ice Center

NOAA Satellite Operations Facility
4231 Suitland Road
Suitland, MD 20746

PRESS RELEASE

FOR IMMEDIATE RELEASE

Contact: LT Falon Essary, NOAA

NIC.PAO@noaa.gov

301-817-3934

Icebergs A-68J, A-68K, and A-68L Calve from Iceberg A-68A in the South Atlantic Ocean

30JAN2021, Suitland, MD — The U.S. National Ice Center (USNIC) has confirmed three new icebergs calved from A-68A in the South Atlantic Ocean. For the third consecutive day, large icebergs have calved from the main iceberg, A-68A as it quickly falls apart near South Georgia Island. As the newly named icebergs A-68G, A-68H, and A-68I drifted away yesterday the three new large icebergs calved. The new iceberg A-68J is located at 56° 24' South, 35° 54' West and measures 21 nautical miles on its longest axis and 5 nautical miles on its widest axis. The new iceberg A-68K is located at 56° 34' South, 35° 41' West and measures 13 nautical miles on its longest axis and 2 nautical miles on its widest axis. The new iceberg A-68L is located at 56° 44' South, 35° 49' West and measures 13 nautical miles on its longest axis and 2 nautical miles on its widest axis

A-68J, A-68K and A-68L were spotted and confirmed by USNIC Ice Analyst Christopher Readinger using the Sentinel-1A/B images shown below.

Iceberg names are derived from the Antarctic quadrant in which they were originally sighted. The quadrants are divided counter-clockwise in the following manner:

A = 0-90W (Bellingshausen/Weddell Sea) C = 180-90E (Western Ross Sea/Wilkesland)
B = 90W-180 (Amundsen/Eastern Ross Sea) D = 90E-0 (Amery/Eastern Weddell Sea)

When first sighted, an iceberg's point of origin is documented by USNIC. The letter of the quadrant, along with a sequential number, is assigned to the iceberg. For example, C-19 is sequentially the 19th iceberg tracked by USNIC in Antarctica between 180-90E (Quadrant C). Icebergs with letter suffixes have calved from already named icebergs, where the letters are added in sequential order. For example, C-19D is the 4th iceberg to calve off the original C-19 iceberg.

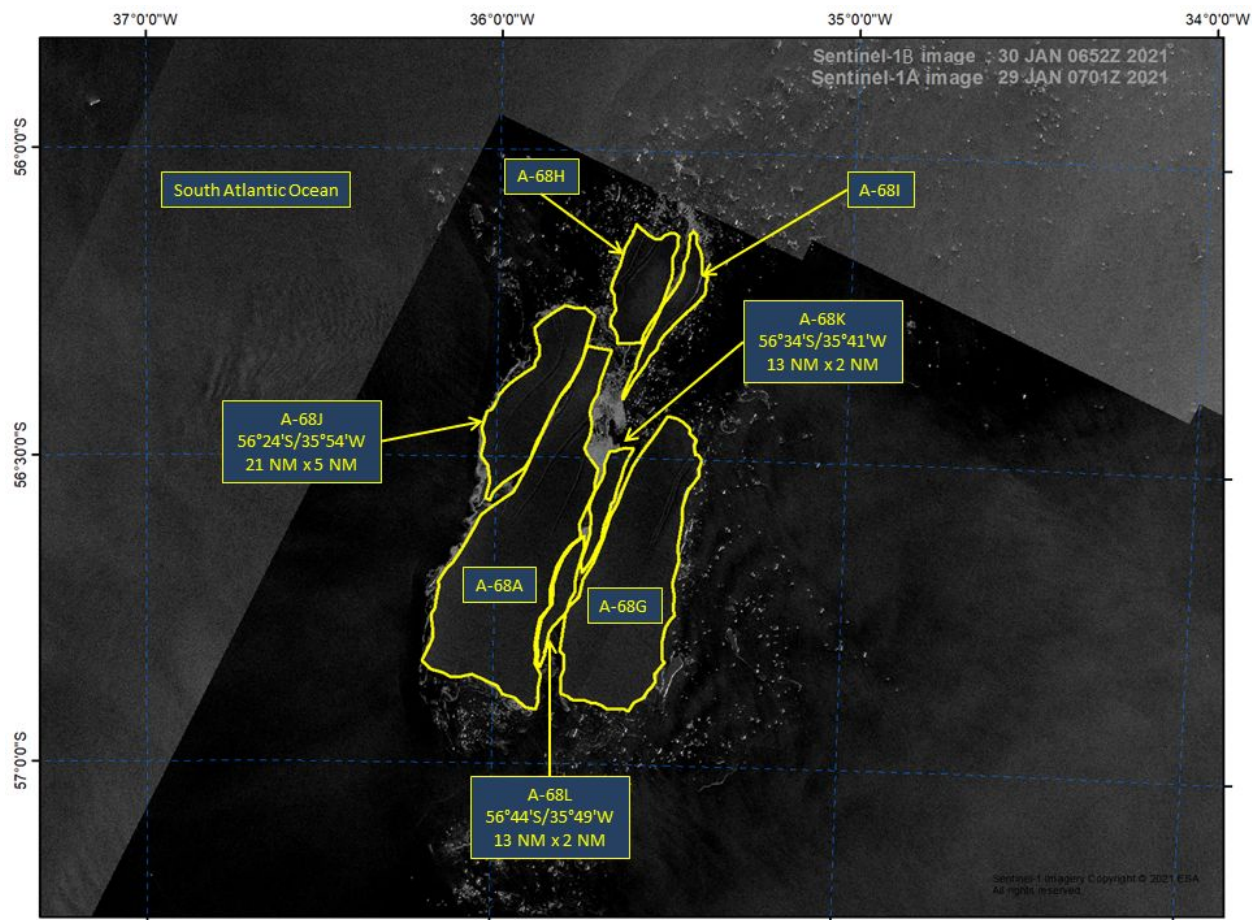


Figure 1: Sentinel-1A/B image of A-68A, A-68G, A-68H, A-68I, A-68J, A-68K, and A-68L January 30, 2021

To access daily products, weekly products, archival data and much more of USNIC data in various formats, visit the USNIC webpage at: <https://usicecenter.gov/Products>

For more information, please contact:

U.S. National Ice Center Facebook: @usnatice

Command Duty Officer Twitter: @usnatice

E-mail: nic.cdo@noaa.gov

Voice: (301) 943-6977



The U.S. National Ice Center is a multi-agency center operated by the Navy, NOAA, and Coast Guard and provides global to tactical scale ice and snow products, ice forecasting, and related environmental intelligence services for the United States government.