



U.S. National Ice Center

NOAA Satellite Operations Facility
4231 Suitland Road
Suitland, MD 20746

PRESS RELEASE

FOR IMMEDIATE RELEASE

Contact: LT Falon Essary, NOAA

NIC.PAO@noaa.gov

301-817-3934

Iceberg A-68M Calves from A-68G in the South Atlantic Ocean

31JAN2021, Suitland, MD — The U.S. National Ice Center (USNIC) has confirmed A-68G has broken in half prompting the naming of A-68M in the continued rapid break-up of the A-68A family of icebergs. The new iceberg A-68M is located at 56° 52' South, 35° 18' West and measures 26 nautical miles on its longest axis and 6 nautical miles on its widest axis.

A-68M was first spotted by Jan Lieser Australia's Bureau of Meteorology and confirmed by USNIC Ice Analyst Christopher Readinger using the Sentinel-1A image shown below.

Iceberg names are derived from the Antarctic quadrant in which they were originally sighted. The quadrants are divided counter-clockwise in the following manner:

A = 0-90W (Bellingshausen/Weddell Sea) C = 180-90E (Western Ross Sea/Wilkesland)
B = 90W-180 (Amundsen/Eastern Ross Sea) D = 90E-0 (Amery/Eastern Weddell Sea)

When first sighted, an iceberg's point of origin is documented by USNIC. The letter of the quadrant, along with a sequential number, is assigned to the iceberg. For example, C-19 is sequentially the 19th iceberg tracked by USNIC in Antarctica between 180-90E (Quadrant C). Icebergs with letter suffixes have calved from already named icebergs, where the letters are added in sequential order. For example, C-19D is the 4th iceberg to calve off the original C-19 iceberg.

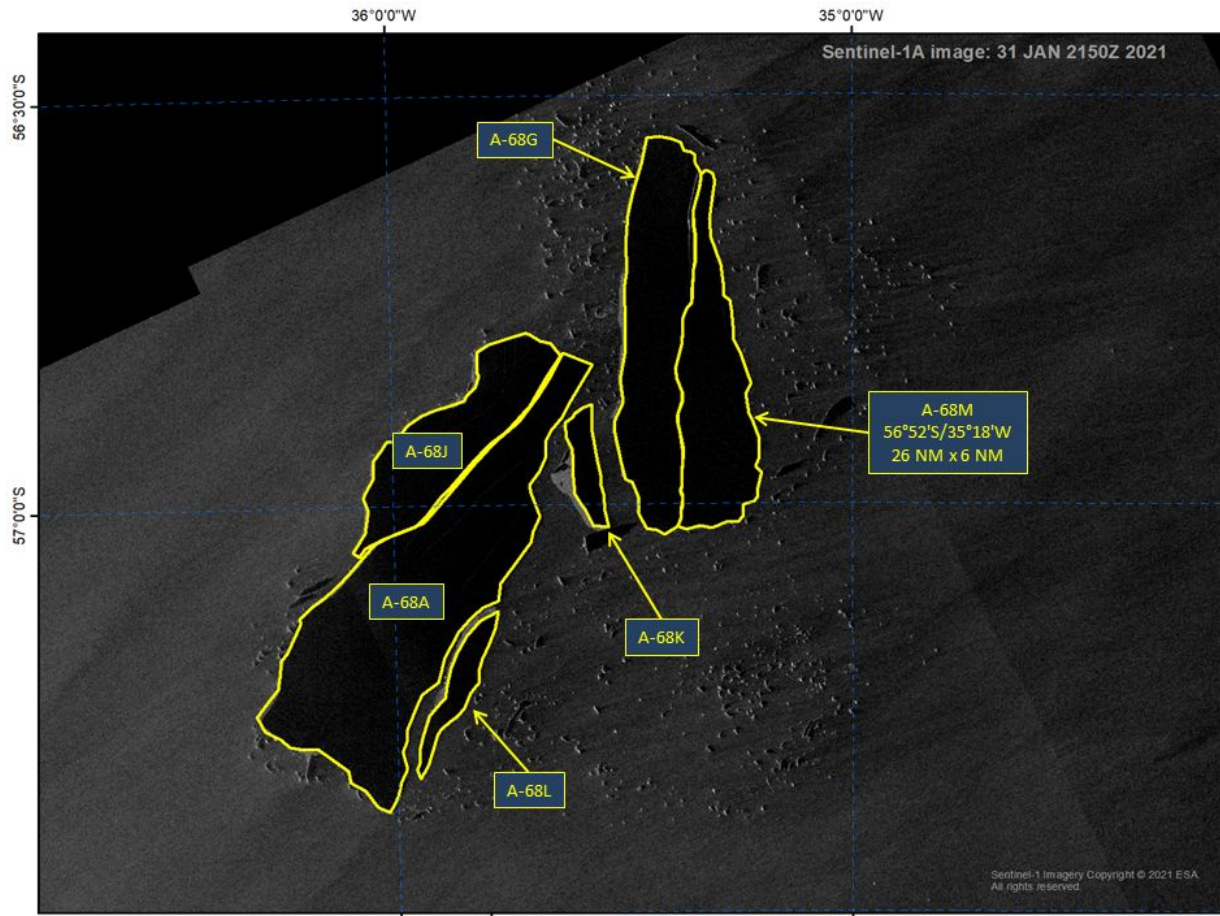


Figure 1: Sentinel-1A image of A-68A, A-68G, A-68J, A-68K, A-68L, and A-68M January 31, 2021

To access daily products, weekly products, archival data and much more of USNIC data in various formats, visit the USNIC webpage at: <https://usicecenter.gov/Products>

For more information, please contact:
U.S. National Ice Center Facebook: @usnatice
Command Duty Officer Twitter: @usnatice
E-mail: nic.cdo@noaa.gov
Voice: (301) 943-6977



The U.S. National Ice Center is a multi-agency center operated by the Navy, NOAA, and Coast Guard and provides global to tactical scale ice and snow products, ice forecasting, and related environmental intelligence services for the United States government.