



## **U.S. National Ice Center**

NOAA Satellite Operations Facility  
4231 Suitland Road  
Suitland, MD 20746

## **PRESS RELEASE**

### **FOR IMMEDIATE RELEASE**

Contact: LT Falon Essary, NOAA  
[NIC.PAO@noaa.gov](mailto:NIC.PAO@noaa.gov)  
301-817-3934

### **Iceberg A-68N Calves from A-68G in the South Atlantic Ocean**

08FEB2021, Suitland, MD — The U.S. National Ice Center (USNIC) has confirmed A-68G has broken again prompting the naming of A-68N. As of February 6th, the new iceberg A-68N was located at 56° 54' South, 34° 53' West and measures 15 nautical miles on its longest axis and two nautical miles on its widest axis. Under partly cloudy conditions it was difficult to see the full picture of calving activity from A-68G and A-68M, but on February 6th imagery was clear enough to see that A-68N had broken off. There does seem to be further activity, but current imagery does not allow us to confirm anything at this time.

A-68N was first spotted by USNIC Ice Analyst Michael Lowe, and confirmed by USNIC Ice Analyst Christopher Readinger using the VIIRS image shown below.

Iceberg names are derived from the Antarctic quadrant in which they were originally sighted. The quadrants are divided counter-clockwise in the following manner:

A = 0-90W (Bellingshausen/Weddell Sea)      C = 180-90E (Western Ross Sea/Wilkesland)  
B = 90W-180 (Amundsen/Eastern Ross Sea)      D = 90E-0 (Amery/Eastern Weddell Sea)

When first sighted, an iceberg's point of origin is documented by USNIC. The letter of the quadrant, along with a sequential number, is assigned to the iceberg. For example, C-19 is sequentially the 19th iceberg tracked by USNIC in Antarctica between 180-90E (Quadrant C). Icebergs with letter suffixes have calved from already named icebergs, where the letters are added in sequential order. For example, C-19D is the fourth iceberg to calve off the original C-19 iceberg.

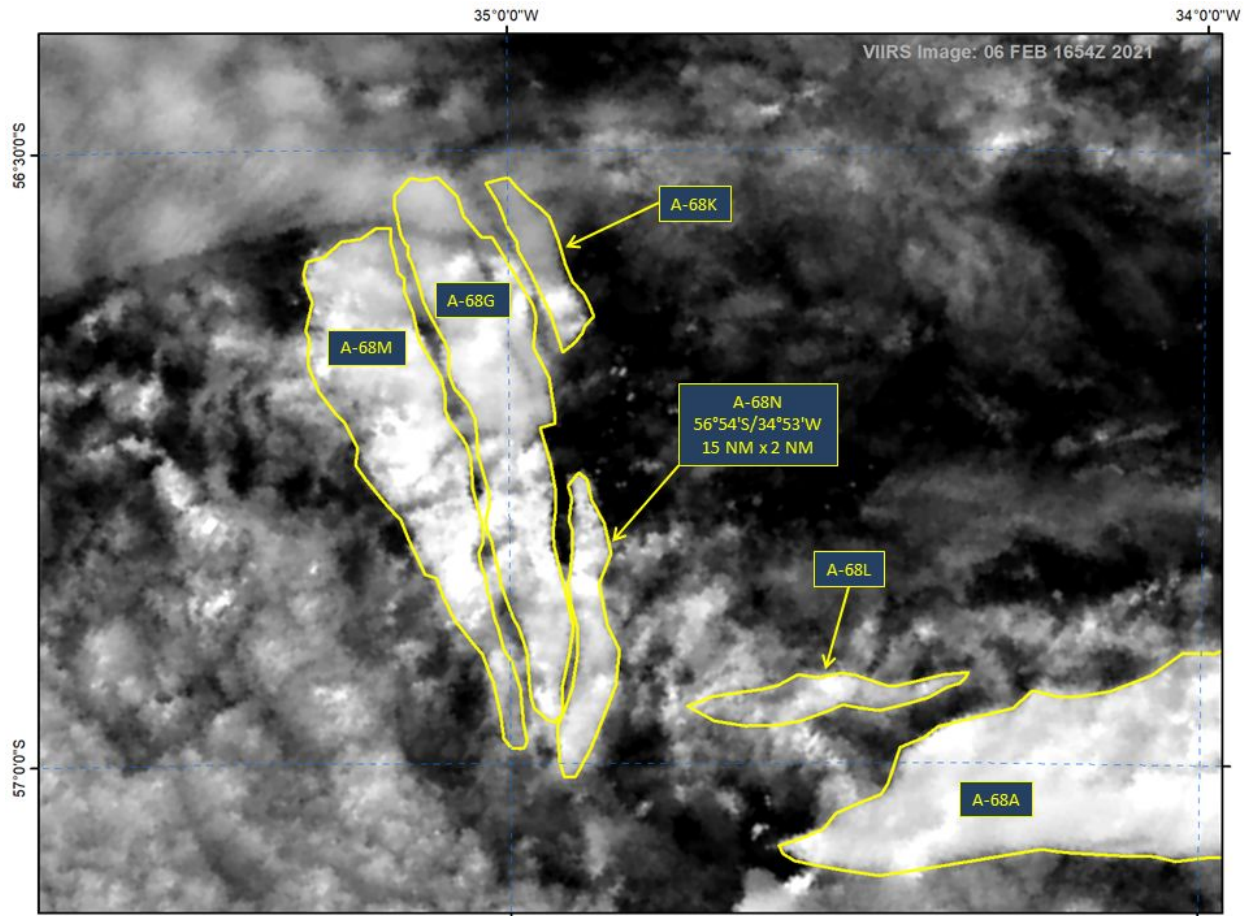


Figure 1: VIIRS image of A-68A, A-68G, A-68K, A-68L, A-68M, and A-68N February 6, 2021

To access daily products, weekly products, archival data and much more of USNIC data in various formats, visit the USNIC webpage at: <https://usicecenter.gov/Products>

For more information, please contact:

U.S. National Ice Center Facebook: @usnatice

Command Duty Officer Twitter: @usnatice

E-mail: [nic.cdo@noaa.gov](mailto:nic.cdo@noaa.gov)

Voice: (301) 943-6977



**The U.S. National Ice Center is a multi-agency center operated by the Navy, NOAA, and Coast Guard and provides global to tactical scale ice and snow products, ice forecasting, and related environmental intelligence services for the United States government.**