



## **U.S. National Ice Center**

NOAA Satellite Operations Facility  
4231 Suitland Road  
Suitland, MD 20746

## **PRESS RELEASE**

### **FOR IMMEDIATE RELEASE**

Contact: LT Falon Essary, NOAA

[NIC.PAO@noaa.gov](mailto:NIC.PAO@noaa.gov)

301-817-3934

### **Iceberg D-28 Collided with Ice Shelves in the Queen Maud Land Region of Antarctica Creating Five New Icebergs as a Result**

07JUNE2021, Suitland, MD — The U.S. National Ice Center (USNIC) has confirmed D-29 and D-30 have calved from the Baudouin and Borchgrevink ice shelves respectively. Almost immediately after calving from the collision with D-28, icebergs D-29 and D-30 calved into smaller icebergs resulting in five total (D-29A-C, D-30A-B). Calved from the Baudouin Ice Shelf as of June 6th, iceberg D-29A was centered at 69° 55' South, 23° 17' East and measures 21 nautical miles on its longest axis and nine nautical miles on its widest axis. D-29B was centered at 70° 04' South, 23° 48' East and measures 13 nautical miles on its longest axis and seven nautical miles on its widest axis. Iceberg D-29C was centered at 69° 56' South, 23° 50' East and measures 13 nautical miles on its longest axis and six nautical miles on its widest axis.

Calved from the Borchgrevink Ice Shelf, Iceberg D-30A was centered at 69° 48' South, 20° 38' East and measures 39 nautical miles on its longest axis and 11 nautical miles on its widest axis. D-30B was centered at 69° 52' South, 20° 06' East and measures 15 nautical miles on its longest axis and five nautical miles on its widest axis.

The new icebergs were first spotted USNIC Analysts Michael Lowe, and Christopher Readinger, and confirmed by Christopher Readinger using the Sentinel-1A and 1B images shown below.

Iceberg names are derived from the Antarctic quadrant in which they were originally sighted. The quadrants are divided counter-clockwise in the following manner:

A = 0-90W (Bellingshausen/Weddell Sea)      C = 180-90E (Western Ross Sea/Wilkesland)  
 B = 90W-180 (Amundsen/Eastern Ross Sea)      D = 90E-0 (Amery/Eastern Weddell Sea)

When first sighted, an iceberg's point of origin is documented by USNIC. The letter of the quadrant, along with a sequential number, is assigned to the iceberg. For example, C-19 is sequentially the 19th iceberg tracked by USNIC in Antarctica between 180-90E (Quadrant C). Icebergs with letter suffixes have calved from already named icebergs, where the letters are added in sequential order. For example, C-19D is the 4th iceberg to calve off the original C-19 iceberg.

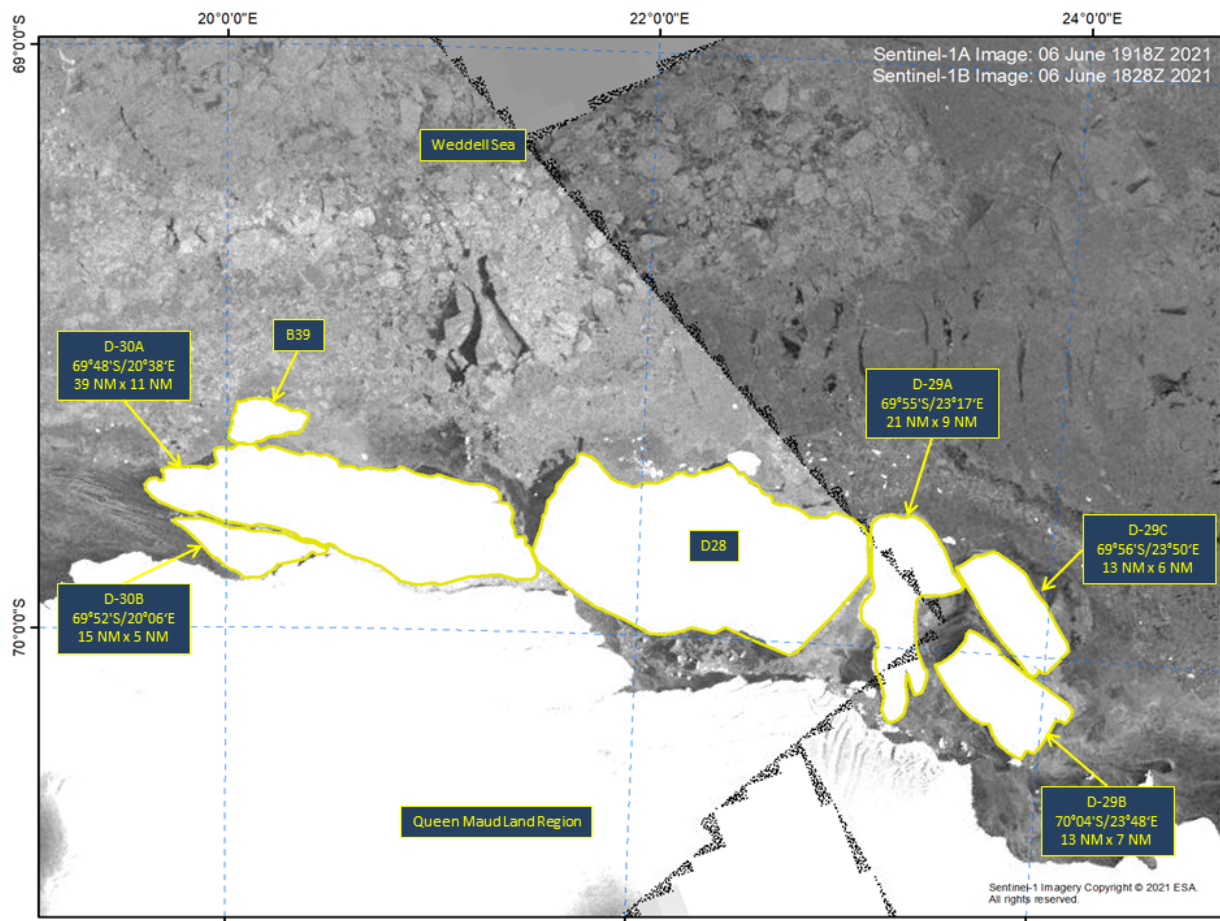


Figure 1: Sentinel-1A and 1B images of icebergs B-39, D-28, D-29A, D-29B, D-29C, D-30A, and D-30B from June 6, 2021

To access daily products, weekly products, archival data and much more of USNIC data in various formats, visit the USNIC webpage at: <https://usicecenter.gov/Products>

For more information, please contact:

U.S. National Ice Center Facebook: @usnatice

Command Duty Officer Twitter: @usnatice

E-mail: [nic.cdo@noaa.gov](mailto:nic.cdo@noaa.gov)

Voice: (301) 943-6977



**The U.S. National Ice Center is a multi-agency center operated by the Navy, NOAA, and Coast Guard and provides global to tactical scale ice and snow products, ice forecasting, and related environmental intelligence services for the United States government.**