



**U.S. National Ice Center**

NOAA Satellite Operations Facility  
4231 Suitland Road  
Suitland, MD 20746

**PRESS RELEASE**

**FOR IMMEDIATE RELEASE**

Contact: LT Falon Essary, NOAA  
[NIC.PAO@noaa.gov](mailto:NIC.PAO@noaa.gov)  
301-817-3934

**Iceberg A-78 Calves from the Jelbart Ice Shelf**

26AUG2021, Suitland, MD — The U.S. National Ice Center (USNIC) has confirmed that iceberg A-78 has calved from the Jelbart Ice Shelf on the Princess Martha Coast of Antarctica. As of August 25th, A-78 was centered at 70° 21' South, 3° 58' West and measures 18 nautical miles on its longest axis and four nautical miles on its widest axis.

The new iceberg was first spotted by Dr Jan Lieser of Australia's Bureau of Meteorology and confirmed by USNIC Analyst Christopher Readinger using the Sentinel-1B image below.

Iceberg names are derived from the Antarctic quadrant in which they were originally sighted. The quadrants are divided counter-clockwise in the following manner:

A = 0-90W (Bellingshausen/Weddell Sea)	C = 180-90E (Western Ross Sea/Wilkesland)
B = 90W-180 (Amundsen/Eastern Ross Sea)	D = 90E-0 (Amery/Eastern Weddell Sea)

When first sighted, an iceberg's point of origin is documented by USNIC. The letter of the quadrant, along with a sequential number, is assigned to the iceberg. For example, C-19 is sequentially the 19th iceberg tracked by USNIC in Antarctica between 180-90E (Quadrant C).

Icebergs with letter suffixes have calved from already named icebergs, where the letters are added in sequential order. For example, C-19D is the fourth iceberg to calve off the original C-19 iceberg.

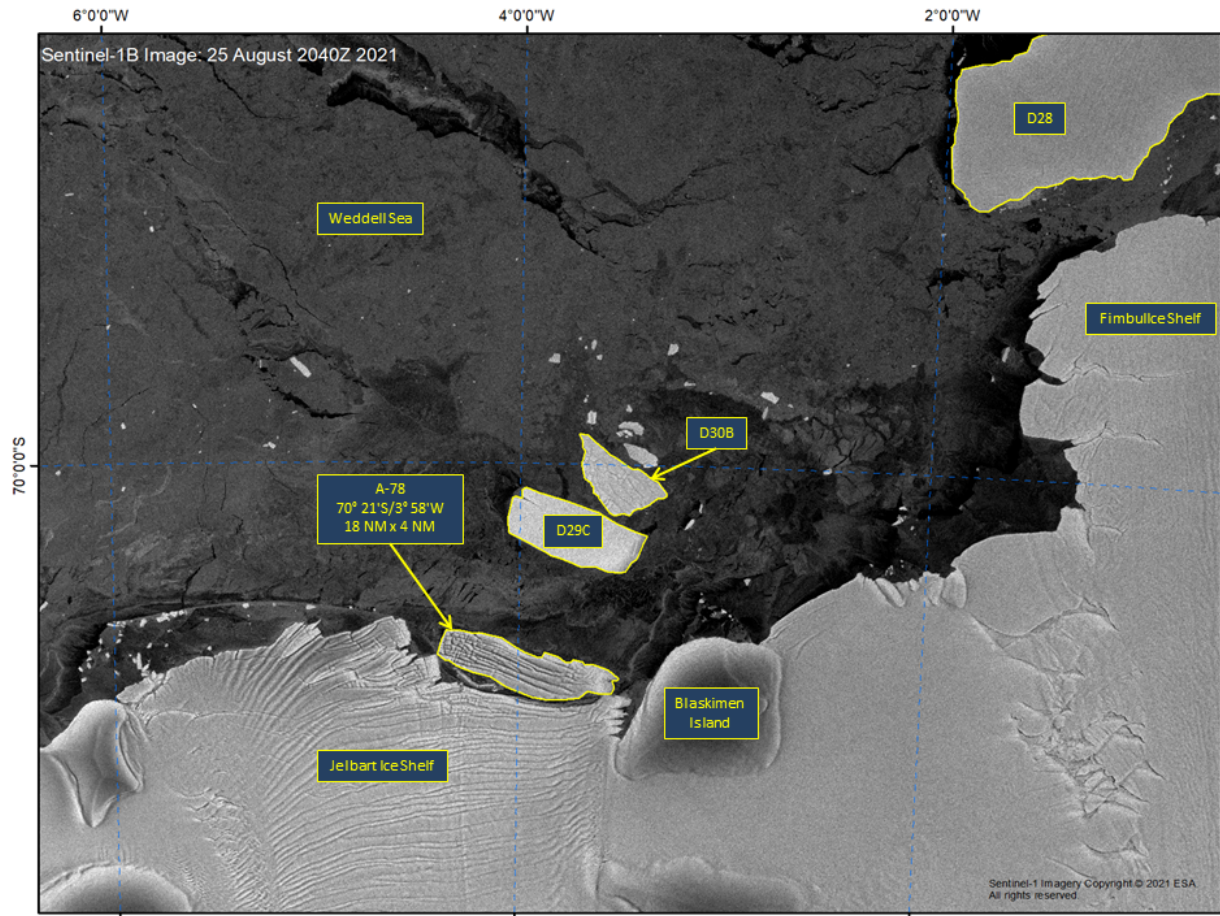


Figure 1: Sentinel-1B image of iceberg A-78 from August 25, 2021

To access daily products, weekly products, archival data and much more of USNIC data in various formats, visit the USNIC webpage at: <https://usicecenter.gov/Products>.

For more information, please contact:

U.S. National Ice Center Facebook: @usnatice

Command Duty Officer Twitter: @usnatice

E-mail: [nic.cdo@noaa.gov](mailto:nic.cdo@noaa.gov)

Voice: (301) 943-6977



**The U.S. National Ice Center is a multi-agency center operated by the Navy, NOAA, and Coast Guard and provides global to tactical scale ice and snow products, ice forecasting, and related environmental intelligence services for the United States government.**