



**U.S. National Ice Center**  
NOAA Satellite Operations Facility  
4231 Suitland Road  
Suitland, MD 20746

## **PRESS RELEASE**

### **FOR IMMEDIATE RELEASE**

Contact: Christopher Readinger, USN  
[NIC.PAO@noaa.gov](mailto:NIC.PAO@noaa.gov)  
301-943-6977

### **Iceberg C-37 Broke Free from Bowman Island in the Wilkes Land Region**

8MAR2022, SUITLAND, MD — The U.S. National Ice Center (USNIC) has confirmed that iceberg C-37 (figure 1, below) has calved from the remnants of the Glenzer Ice Shelf. As of March 7, C-37 was centered at 65° 35' South and 103° 23' East and measured 13 nautical miles on its longest axis and 3 nautical miles on its widest axis.

In the days since this image, C-37 has calved a large piece. Iceberg C-37 now measures 8 nautical miles by 3 nautical miles and has drifted 5 nautical miles from this position. It is still large enough to be tracked.

The new iceberg was first spotted by USNIC Analyst, Christopher Readinger, and confirmed as glacial ice in collaboration with Christopher A. Shuman, UMBC Research Professor at NASA GSFC Cryospheric Sciences Laboratory, and Jan Lieser from the Australian Bureau of Meteorology, using the Sentinel-1A image below.

Iceberg names are derived from the Antarctic quadrant in which they were originally sighted. The quadrants are divided counter-clockwise in the following manner:

A = 0-90W (Bellingshausen/Weddell Sea)  
B = 90W-180 (Amundsen/Eastern Ross Sea)  
C = 180-90E (Western Ross Sea/Wilkesland)  
D = 90E-0 (Amery/Eastern Weddell Sea)

When first sighted, an iceberg's point of origin is documented by USNIC. The letter of the quadrant, along with a sequential number, is assigned to the iceberg. For example, C-19 is sequentially the 19th iceberg tracked by USNIC in Antarctica between 180-90E (Quadrant C). Icebergs with letter suffixes have calved from already named icebergs, where the letters are added in sequential order. For example, C-19D is the 4th iceberg to calve off the original C-19 iceberg.

Iceberg positions are analyzed weekly and are available on the USNIC webpage at:  
<https://usicecenter.gov/Products/AntarcIcebergs>

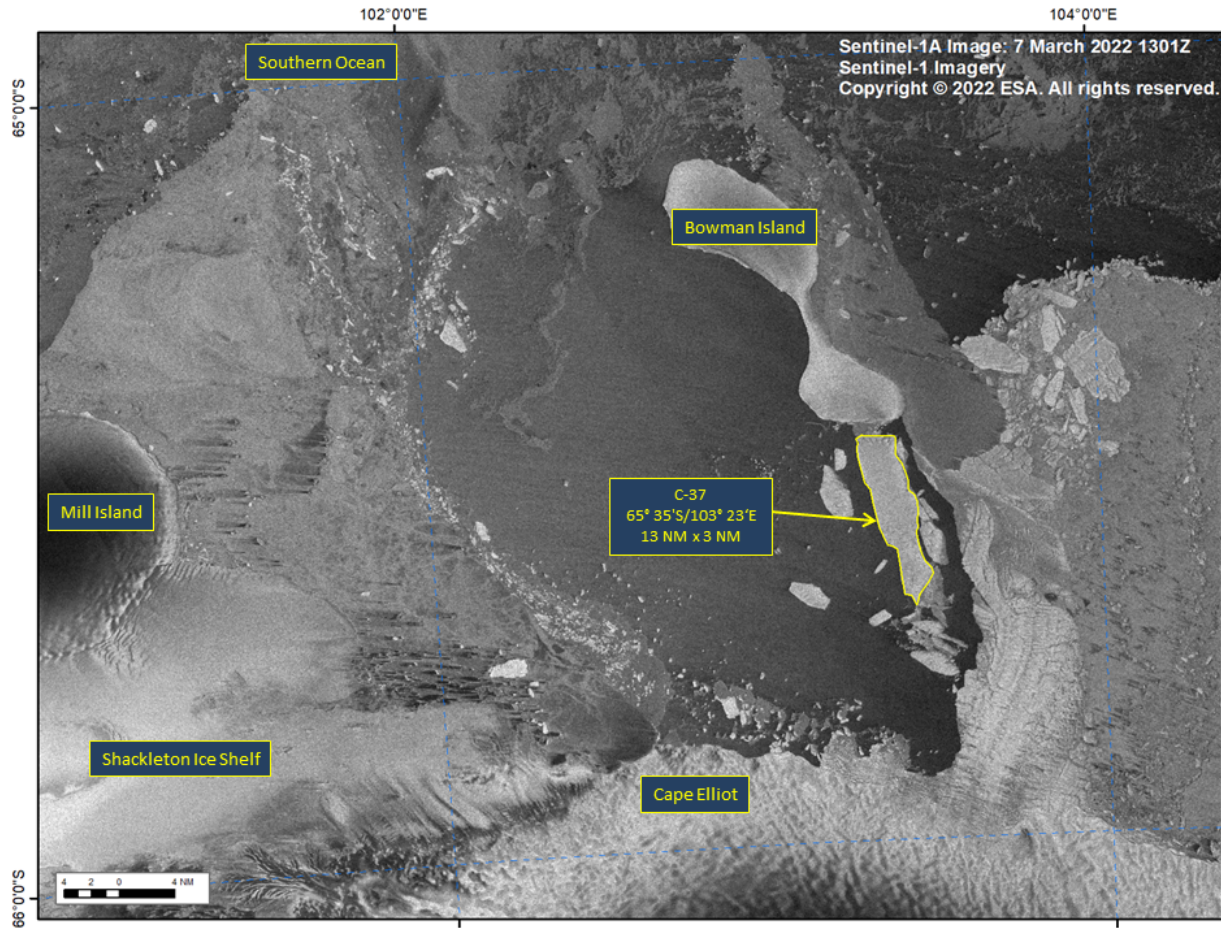


Figure 1: Sentinel-1A image of iceberg C-37 from March 7, 2022.

For more information, please contact:

U.S. National Ice Center

Command Duty Officer

E-mail: [nic.cdo@noaa.gov](mailto:nic.cdo@noaa.gov)

Voice: (301) 943-6977

Visit us on Facebook at: <https://www.facebook.com/usnatice>

**The U.S. National Ice Center is a multi-agency center operated by the Navy, NOAA, and Coast Guard and provides global to tactical scale ice and snow products, ice forecasting, and related environmental intelligence services for the United States government.**