



U.S. National Ice Center
NOAA Satellite Operations Facility
4231 Suitland Road
Suitland, MD 20746

PRESS RELEASE

FOR IMMEDIATE RELEASE

Contact: LT Jacquelyn Putnam, NOAA
NIC.PAO@noaa.gov
301-817-3934

Arctic Sea Ice at Minimum Extent

26SEP2022, Suitland, MD — The U.S. National Ice Center (USNIC) has determined the 2022 minimum Arctic sea ice extent occurred in mid-September 2022 with an area of 4.72 million square kilometers based on analysis from the USNIC's Interactive Multisensor Snow and Ice Mapping System (IMS), used in the Multisensor Analyzed Sea Ice Extent (MASIE) product, jointly created with the National Snow and Ice Data Center (NSIDC).

Analyses for the 2022 melt season indicated a minimum 3-day average of 4.72 million square kilometers between 17 September and 19 September. USNIC minimum ice extent is determined based on a 3-day average to account for short-term spatial variability in the sea ice edge location. The 2022 Arctic sea ice extent minimum is the sixth largest recorded since 2006 when this metric from IMS was first tracked consistently. The 2022 minimum occurred 2 days after the 17 year average minimum date of 16 September.

The National Snow and Ice Data Center (NSIDC), for comparison, tentatively announced on 22 September that the Arctic minimum had occurred on 18 September at 4.67 million square kilometers. This estimate, slightly different from the USNIC estimate, is based on a 25-kilometer resolution ice concentration product from satellite microwave radiometers. USNIC's IMS uses a variety of different satellite observations which are interpreted by an analyst to determine the presence of ice at a 1km resolution. The slight differences also stem from the varying missions of

each institution, the methodology, and the spatial resolution of the data sources used to identify the presence of sea ice.

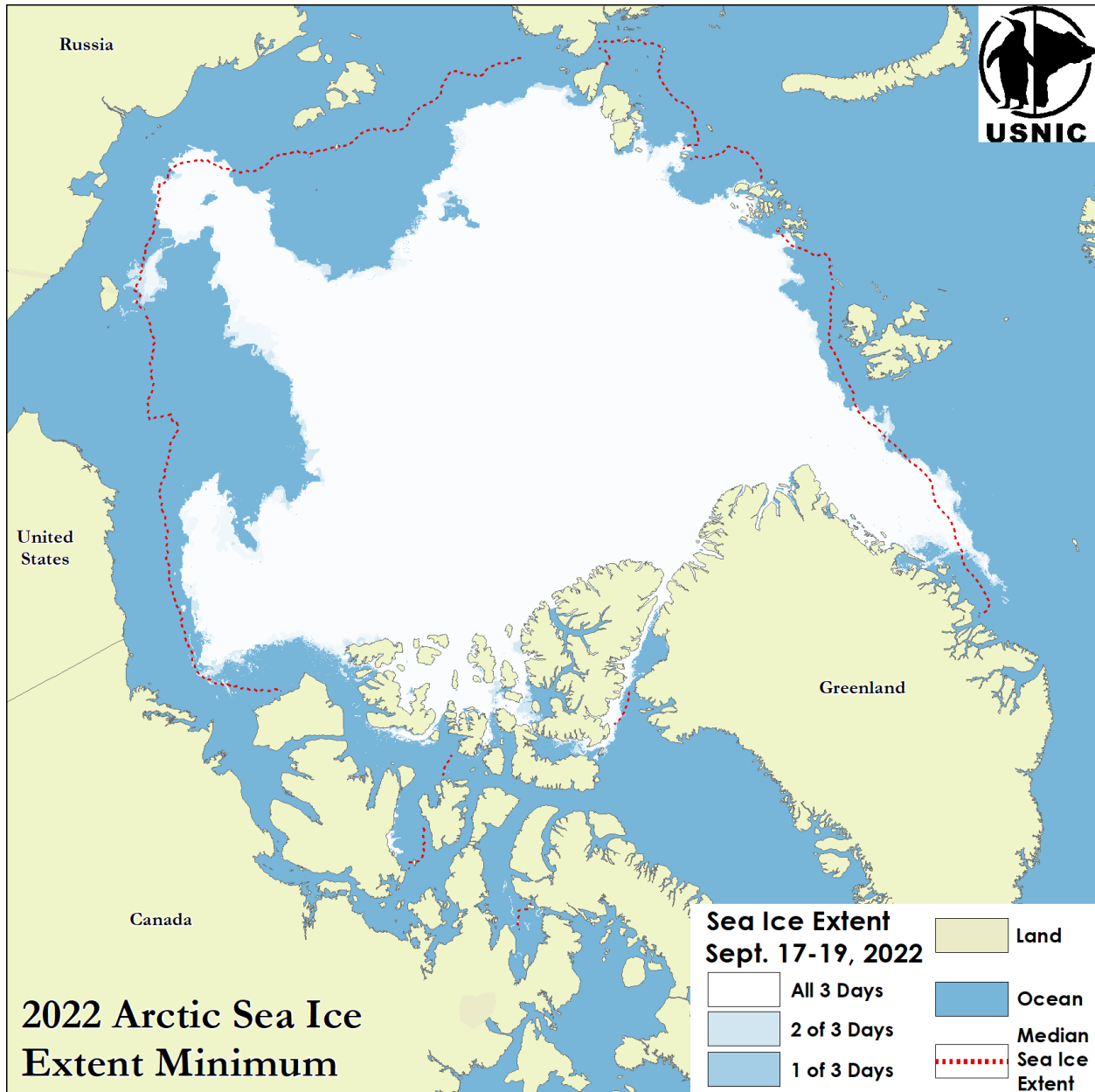


Figure 1: Minimum sea ice extent for 17-19 September as analyzed by USNIC's IMS. The red dashed line shows the 1981-2010 median extent for 18 September as calculated by NSIDC.

To access daily products, weekly products, archival data and much more of USNIC data in various formats, visit the USNIC webpage at: <https://usicecenter.gov/Products>

For more information, please contact:

U.S. National Ice Center Facebook: @usnatice

Command Duty Officer Twitter: @usnatice

E-mail: nic.cdo@noaa.gov

Voice: (301) 943-6977



The U.S. National Ice Center is a multi-agency center operated by the Navy, NOAA, and Coast Guard and provides global to tactical scale ice and snow products, ice forecasting, and related environmental intelligence services for the United States government.