

U.S. National Ice Center

PRESS RELEASE

FOR IMMEDIATE RELEASE

Contact: LT Jacquelyn Putnam, NOAA

NIC.PAO@noaa.gov

301-817-3934



Iceberg D-32 Has Calved from the Western Side of the Amery Ice Shelf

20OCT2022, SUITLAND, MD — The U.S. National Ice Center (USNIC) has confirmed that iceberg D-32 (figure 1, below) has calved from the Amery Ice Shelf in the Amery Region of Antarctica. As of October 19, D-32 was centered at 68° 25' South and 70° 35' East and measured 10 nautical miles on its longest axis and 9 nautical miles on its widest axis. D-32 likely calved on or around October 14, and has drifted 14 nautical miles away from the shelf since then.

The new iceberg was first spotted by Jan Lieser from the Australian Bureau of Meteorology, and confirmed by USNIC Analyst Christopher Readinger using the MODIS image below.

Iceberg names are derived from the Antarctic quadrant in which they were originally sighted. The quadrants are divided counter-clockwise in the following manner:

- A = 0-90W (Bellingshausen/Weddell Sea)
- B = 90W-180 (Amundsen/Eastern Ross Sea)
- C = 180-90E (Western Ross Sea/Wilkesland)
- D = 90E-0 (Amery/Eastern Weddell Sea)

When first sighted, an iceberg's point of origin is documented by USNIC. The letter of the quadrant, along with a sequential number, is assigned to the iceberg. For example, C-19 is sequentially the 19th iceberg tracked by USNIC in Antarctica between 180-90E (Quadrant C). Icebergs with letter suffixes have calved from already named icebergs, where the letters are added in sequential order. For example, C-19D is the 4th iceberg to calve off the original C-19 iceberg.

Iceberg positions are analyzed weekly and are available on the USNIC webpage at:
<https://usicecenter.gov/Products/AntarcIcebergs>

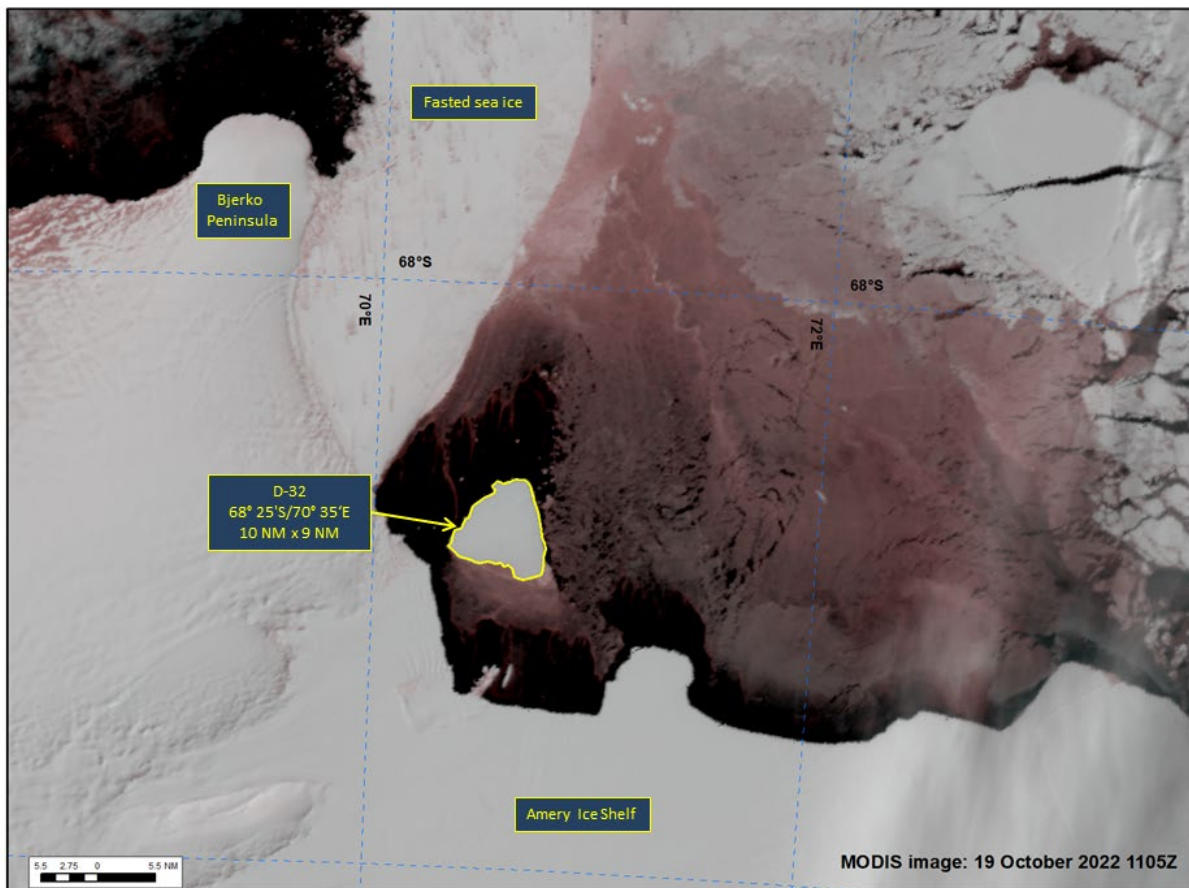


Figure 1: MODIS image of iceberg D-32 from October 19, 2022.

USNIC is a multi-agency center—subordinate to Naval Meteorology and Oceanography Command—operated by the Navy, NOAA, and Coast Guard and provides global to tactical scale ice and snow products, ice forecasting, and related environmental intelligence services for the United States government.

Naval Meteorology and Oceanography Command directs and oversees more than 2,500 globally-distributed military and civilian personnel who collect, process and exploit environmental information to assist Fleet and Joint Commanders in all warfare areas to make better decisions faster than the adversary.

For more information, please contact:

U.S. National Ice Center
 Command Duty Officer
 E-mail: nic.cdo@noaa.gov
 Voice: (301) 943-6977

Visit us on Facebook at: <https://www.facebook.com/usnatice/>

