

U.S. National Ice Center

PRESS RELEASE

FOR IMMEDIATE RELEASE

Contact: Christopher Readinger, USN

NIC.PAO@noaa.gov

301-943-6977



Icebergs A-80A, A-80B, and A-80C Have Calved from the Southern End of the Larsen-D Ice Shelf in the Weddell Sea

29NOV2022, SUITLAND, MD — The U.S. National Ice Center (USNIC) has confirmed that the three new A-80 icebergs (figure 1, below) calved at the same time from a larger calving event of the Larsen-D Ice Shelf in the Weddell Sea. As of November 29, A-80A was centered at 71°49' South and 60°13' West and measured 19 nautical miles on its longest axis and 9 nautical miles on its widest axis, A-80B was centered at 71°28' South and 60°20' West and measured 14 nautical miles on its longest axis and 5 nautical miles on its widest axis, A-80C was centered at 71°35' South and 60°29' West and measured 10 nautical miles on its longest axis and 2 nautical miles on its widest axis. The initial break was seen in satellite imagery on 27 November.

The new icebergs were first spotted by Jan Lieser from the Australian Bureau of Meteorology, and confirmed by USNIC Analyst Christopher Readinger using the Sentinel-1A image below.

Iceberg names are derived from the Antarctic quadrant in which they were originally sighted. The quadrants are divided counter-clockwise in the following manner:

- A = 0-90W (Bellingshausen/Weddell Sea)
- B = 90W-180 (Amundsen/Eastern Ross Sea)
- C = 180-90E (Western Ross Sea/Wilkesland)
- D = 90E-0 (Amery/Eastern Weddell Sea)

When first sighted, an iceberg's point of origin is documented by USNIC. The letter of the quadrant, along with a sequential number, is assigned to the iceberg. For example, C-19 is sequentially the 19th iceberg tracked by USNIC in Antarctica between 180-90E (Quadrant C). Icebergs with letter suffixes have calved from already named icebergs, where the letters are added in sequential order. For example, C-19D is the 4th iceberg to calve off the original C-19 iceberg.

Iceberg positions are analyzed weekly and are available on the USNIC webpage at: <https://usicecenter.gov/Products/AntarcIcebergs>

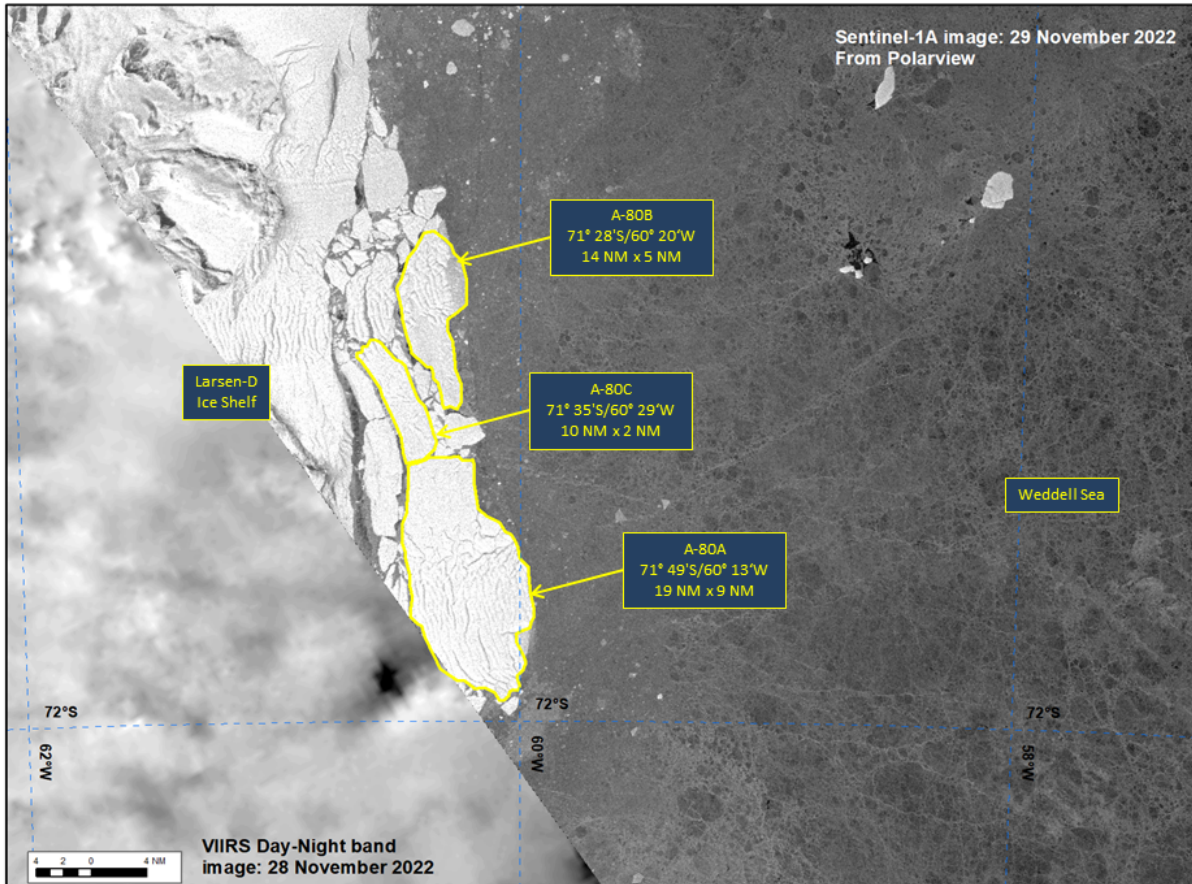


Figure 1: Sentinel-1A/VIIRS DNB image of icebergs A-80A, A-80B, and A-80C from November 28-29, 2022.

USNIC is a multi-agency center—subordinate to Naval Meteorology and Oceanography Command—operated by the Navy, NOAA, and Coast Guard and provides global to tactical scale ice and snow products, ice forecasting, and related environmental intelligence services for the United States government.

Naval Meteorology and Oceanography Command directs and oversees more than 2,500 globally-distributed military and civilian personnel who collect, process and exploit environmental information to assist Fleet and Joint Commanders in all warfare areas to make better decisions faster than the adversary.

For more information, please contact:
 U.S. National Ice Center
 Command Duty Officer
 E-mail: nic.cdo@noaa.gov
 Voice: (301) 943-6977
 Visit us on Facebook at: <https://www.facebook.com/usnatice/>

