

FECN16 CWIS 011800

THIRTY DAY ICE OUTLOOK FOR THE EASTERN AND NORTHERN ARCTIC FOR DECEMBER ISSUED BY ENVIRONMENT CANADA ON 1 DECEMBER 2025. THIS IS THE LAST FORECAST BULLETIN FOR THE SEASON.

Summary for November 15 to Nov 26.

Average air temperatures were significantly above normal for all forecast regions. Freeze-up is around 3-4 weeks later than normal over most forecast regions.

Weather forecast for December.

Air temperatures are forecast to be above normal over all forecast regions.

Northern Baffin Bay.

December 1-7

- 9-9+ tenths first-year, second-year and multi-year ice in the northwestern section including near the entrance to Lancaster Sound.
- 9-9+ tenths grey-white and first-year ice including a trace of old ice in the southwestern section.
- 7-8 tenths new and grey ice in the extreme northeastern section.
- 4-6 tenths new and grey ice in the extreme southeastern section.

December 8-15

- 9-9+ tenths first-year, second-year and multi-year ice in the northwestern section.
- 9-9+ tenths grey-white and first-year ice including a trace of old ice in the southwestern section.
- Elsewhere, 9-9+ tenths grey and grey-white ice.
- Consolidated first-year and multi-year ice along the coast in the northwestern section.
- Consolidated grey-white ice including a trace of multi-year ice along parts of the coast in the southwestern section.

December 16-22

- 9-9+ tenths first-year, second-year and multi-year ice in the northwestern section.
- 9-9+ tenths first-year ice including a trace of old ice in the southwestern section.
- Elsewhere, 9-9+ tenths grey and grey-white ice.
- Consolidated first-year and multi-year ice along the coast in the northwestern section.
- Consolidated first-year ice including a trace of multi-year ice along parts of the coast in the southwestern section.

December 23-31

- 9-9+ tenths first-year, second-year and multi-year ice in the western section.
- Elsewhere, 9-9+ tenths grey-white and first-year ice.
- Consolidated first-year and multi-year ice along the coast in the northwestern section.
- Consolidated first-year ice including a trace of multi-year ice along parts of the coast in the southwestern section.

Southwestern Baffin Bay.

December 1-7

- 9-9+ tenths grey and grey-white ice including a trace of multi-year ice in the northwestern section.
- 9-9+ tenths new and grey ice in the central and southwestern sections.
- Bergy water with areas of 4-6 tenths new ice in the eastern section.

December 8-15

- 9-9+ tenths grey, grey-white and first-year ice including a trace of multi-year ice in the northwestern section.
- 9-9+ tenths grey and grey-white ice in the central and southwestern sections.
- 1-3 tenths new and grey ice in the eastern section.

December 16-22

- 9-9+ tenths grey-white and first-year ice including a trace of multi-year ice in the western section.
- 9-9+ tenths grey-white and first-year ice in the central section.
- 9-9+ tenths grey ice and grey-white ice in the central section.
- 7-8 tenths new and grey ice in the extreme eastern section.
- Consolidated first-year ice including a trace of multi-year ice along parts of the coast.

December 23-31

- 9-9+ tenths first-year and multi-year ice in the western section.
- 9-9+ tenths first-year ice including a trace of multi-year ice in the central section.
- 9-9+ tenths grey ice and grey-white ice in the eastern section.
- Consolidated first-year ice including a trace of multi-year ice along parts of the coast.

Pond and Navy Board Inlets

Lancaster Sound

Prince Regent Inlet

Gulf of Boothia

Barrow Strait

Admiralty Inlet

Wellington Channel

McDougall Sound

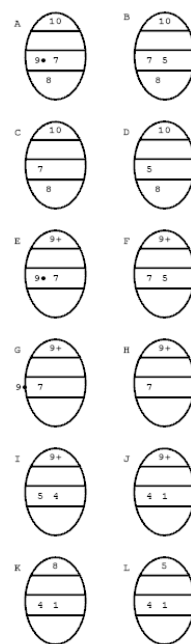
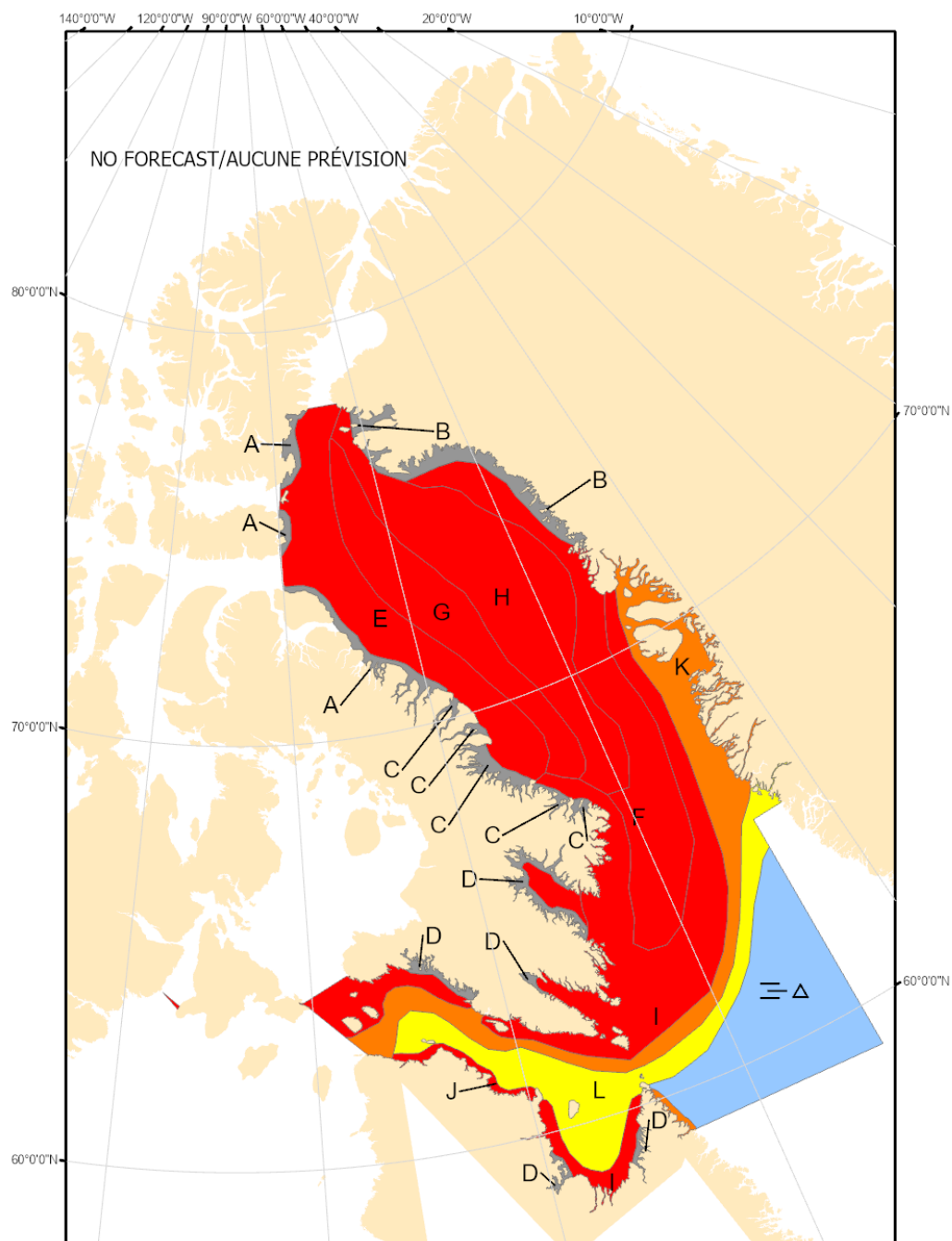
Jones Sound

Norwegian Bay

Eureka Sound

Western Kane Basin.

Forecasts have ended for the season.



COLOR CODES BASED ON TOTAL CONCENTRATION

ICE FREE	4-6 TENTHS	FAST ICE (TEN TENTHS)
LESS THEN 1 TENTH	7-8 TENTHS	ICE SHELF
1-3 TENTHS	9-10 TENTHS	UNDEFINED ICE

North American Ice Service /
Service des glaces de l'Amérique du Nord
ICE FORECAST - 30 DAY
PRÉVISIONS DES GLACES - 30 JOURS
VALID/VALIDE: 31 DEC/DÉC. 2025