

FECN16 CWIS 151800

THIRTY DAY ICE OUTLOOK FOR THE EASTERN AND NORTHERN ARCTIC FOR MID-NOVEMBER TO MID-DECEMBER ISSUED BY ENVIRONMENT CANADA ON 15 NOVEMBER 2024. THE NEXT 30 DAY OUTLOOK WILL BE ISSUED ON 2 DECEMBER 2024.

### **Summary for October 30 to November 12.**

Average air temperatures were well above normal for all regions.

Freeze-up is around 4-5 weeks slower than normal in Prince Regent Inlet, Admiralty Inlet, Gulf of Boothia and Barrow Strait. Freeze-up is around 3-4 weeks slower than normal in Lancaster Sound and Jones Sound. Freeze-up is 2-3 weeks slower than normal in Pond and Navy Board Inlet and Baffin Bay.

### **Weather forecast for mid-November to mid-December**

Air temperatures are forecast to be above normal over all areas.

#### **Northern Baffin Bay.**

November 15-22

- 9-9+ tenths first-year, second-year and multi-year ice in the extreme northwestern section including near the entrance to Jones Sound and along the coast of Devon Island.
- 9-9+ tenths grey-white, second-year and multi-year ice in the northwestern section near the entrance to Lancaster Sound and along the northwestern Baffin Island coast.
- 7-8 tenths new, grey and grey-white ice including a trace of multi-year ice in the extreme northeastern section.
- Elsewhere, 9-9+ tenths new and grey ice except bergy water with areas of 7-8 tenths new and grey ice in the extreme southeastern section.
- Consolidated first-year and multi-year ice along parts of the coasts in the northwestern section.

November 23-30

- 9-9+ tenths first-year, second-year and multi-year ice in the extreme northwestern section.
- 9-9+ tenths grey-white, second-year and multi-year ice in the southwestern section along the coast of Baffin Island.
- Elsewhere, 9-9+ tenths grey and grey-white ice with a trace of multi-year ice except 7-8 tenths new and grey ice in the extreme southeastern section.
- Consolidated first-year and multi-year ice along parts of the coasts in the northwestern section.
- Consolidated grey-white ice including a trace of multi-year ice along the Baffin Island coast.

December 1-8

- 9-9+ tenths first-year, second-year and multi-year ice in the northern section and in the southwestern section along the coast of Baffin Island.
- Elsewhere, 9-9+ tenths grey-white ice.
- Consolidated first-year and multi-year ice along parts of the coasts in the northwestern section.

- Consolidated first-year ice including a trace of multi-year ice along the Baffin Island coast.

December 9-15

- 9-9+ tenths first-year, second-year and multi-year ice in the northern and southwestern sections.
- Elsewhere, 9-9+ tenths grey-white and first-year ice.
- Consolidated first-year and multi-year ice along parts of the coasts in the northwestern section.
- Consolidated first-year ice including a trace of multi-year ice along the Baffin Island coast.

## **Southwestern Baffin Bay.**

November 15-22

- 9-9+ tenths grey and grey-white ice including a trace of multi-year ice along the coast in the extreme northwestern section.
- 9-9+ tenths new and grey ice elsewhere in the western section.
- 7-8 tenths new and grey ice in the central section.
- Bergy water in the extreme eastern section.

November 23-30

- 9-9+ tenths grey-white and second-year ice including up to 2 tenths multi-year ice along the coast in the northwestern section.
- 9-9+ tenths grey and grey-white ice including a trace of multi-year ice along the coast in the southwestern section.
- 9-9+ tenths new and grey ice in the central section.
- Bergy water with areas of 1-3 tenths new ice in the extreme eastern section.
- Consolidated grey-white ice along parts of the Baffin Island coast.

December 1-7

- 9-9+ tenths grey-white, first-year and second-year ice including up to 2 tenths multi-year ice along the coast in the northwestern section.
- 9-9+ tenths grey and grey-white ice including a trace of multi-year ice along the coast in the southwestern section.
- 9-9+ tenths grey and grey-white ice in the central section.
- 4-6 tenths new and grey ice in the extreme eastern section.
- Consolidated grey-white ice along parts of the Baffin Island coast.

December 8-15

- 9-9+ tenths first-year and second-year ice including up to 2 tenths multi-year ice along the coast in the northwestern section.
- 9-9+ tenths grey-white and first-year ice including up to 1 tenth multi-year ice along the coast in the southwestern section.
- 9-9+ tenths grey-white and first-year ice in the central section.
- 7-8 tenths new and grey ice with areas of 9-9+ tenths new and grey ice in the extreme eastern section.
- Consolidated first-year ice including a trace of multi-year ice along parts of the Baffin Island coast.

**Pond and Navy Board Inlets**

**Admiralty Inlet**

**Lancaster Sound**

**Barrow Strait**

**Prince Regent Inlet**

**Gulf of Boothia**

**Wellington Channel**

**McDougall Sound**

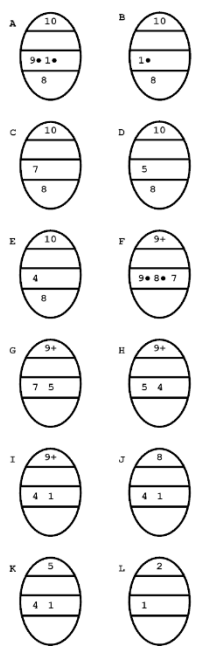
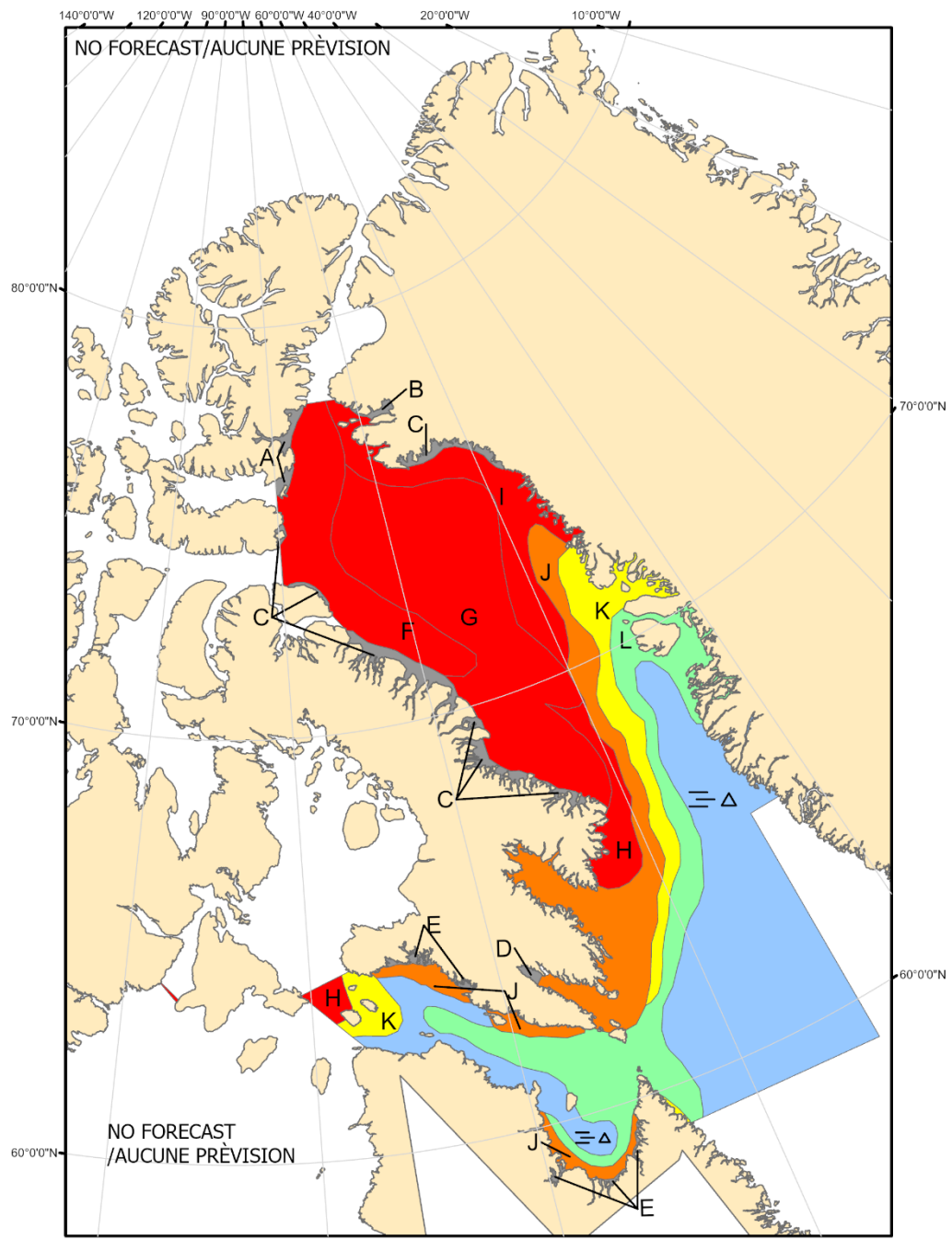
**Jones Sound**

**Norwegian Bay**

**Eureka Sound**

**Western Kane Basin**

Forecasts have ended for the season.



COLOR CODES BASED ON TOTAL CONCENTRATION					
	ICE FREE		4-6 TENTHS		FAST ICE (TEN TENTHS)
	LESS THEN 1 TENTH		7-8 TENTHS		ICE SHELF
	1-3 TENTHS		9-10 TENTHS		UNDEFINED ICE

**North American Ice Service /**  
**Service des glaces de l'Amérique du Nord**  
**ICE FORECAST - 30 DAY**  
**PRÉVISIONS DES GLACES - 30 JOURS**  
**VALID/VALIDE: 15 DEC/DEC. 2024**