

FECN15 CWIS 011800

THIRTY DAY ICE OUTLOOK FOR HUDSON AND FOXE FOR NOVEMBER ISSUED BY ENVIRONMENT CANADA ON 01 NOVEMBER 2023.

THE NEXT 30 DAY OUTLOOK WILL BE ISSUED ON 15 NOVEMBER 2023.

### **Summary for October 12 to October 30.**

Average air temperatures have been above normal for Foxe Basin, Hudson Bay, and Hudson Strait. Average air temperatures have been below normal for Davis Strait and James Bay. Elsewhere, average air temperatures have been near normal. Freeze up is currently 1 week late for eastern Fury and Hecla Strait. Freeze up is 1 week ahead of normal for parts of the northeastern shore of Foxe Basin.

### **Weather forecast for November.**

Air temperatures are forecast to be below normal along parts of the northeastern shore of Foxe Basin. Near normal temperatures are expected elsewhere.

### **Southern Labrador Coast**

#### **Northern Labrador Coast.**

November 1-15

- Bergy water.

November 16-30

- 1-3 tenths new ice developing along parts of the coast.

### **Lake Melville.**

November 1-7

- Ice free.

November 8-15

- Open water

November 16-22

- Open water except 2 tenths new ice along parts of the coast.

November 23-30

- 4-6 tenths new and grey ice.

### **Southern Davis Strait.**

November 1-7

- Bergy water.

November 8-15

- Bergy water except 1-3 tenths new ice in the extreme northwestern section.

November 16-22

- Bergy water except 7-8 tenths new ice in the western section.

November 23-30

- Bergy water except 9-9+ tenths grey and grey-white ice in the northwestern section.

## **Northern Davis Strait**

November 1-7

- Bergy water except 1-3 tenths new ice forming along parts of the coast.

November 8-15

- Bergy water except 7-8 tenths new ice in the western section.

November 16-22

- 7-8 tenths new and grey ice except 9-9+ tenths grey and grey-white ice in the extreme northwestern section.

November 23-30

- 9-9+ tenths grey and grey-white ice except 9-9+ tenths grey-white and first-year ice including a trace of multi-year ice in the western section.

## **Frobisher Bay.**

November 1-22

- Bergy water except 1-3 tenths new ice along parts of the coast.

November 23-30

- Bergy water except 1-3 tenths new and grey ice in the southeastern section.
- 1-3 tenths new and grey ice along parts of the coast.

## **Cumberland Sound.**

November 1-15

- Bergy water except 1-3 tenths new and grey ice along parts of the coast.

November 16-22

- 1-3 tenths new ice
- Consolidated grey ice along parts of the coast.

November 23-30

- 9-9+ tenths new, grey, and grey-white ice.
- Consolidated grey-white ice along parts of the coast.

## **Hudson Strait.**

November 1-7

- Bergy water.

November 8-15

- Bergy water except 1-3 tenths new ice along parts of the coasts.

November 16-22

- Bergy water except 1-3 tenths new and grey ice in the western section.

November 23-30

- 1-3 tenths new and grey ice except 7-8 tenths grey and grey-white ice in the extreme western section.

## **Ungava Bay.**

November 1-15

- Bergy water.

November 16-22

- Bergy water except 1-3 tenths new ice along parts of the coasts.

November 23-30

- Bergy water except 4-6 tenths new and grey ice along parts of the coasts.

## **Foxe Basin.**

November 1-7

- Open water except 4-6 tenths new and grey ice in the northern and eastern sections.
- 9-9+ tenths grey and grey-white ice including a trace of second-year ice in Fury and Hecla Strait.

November 8-15

- 1-3 tenths new ice except 7-8 tenths grey and grey-white ice in the northern and eastern sections.
- 9-9+ tenths grey-white ice including a trace of second-year ice in Fury and Hecla Strait.

November 16-22

- 4-6 tenths new and grey ice except 9-9+ tenths grey and grey-white ice in the northern and eastern sections.
- 9-9+ tenths grey-white and first-year ice including a trace of second-year ice in Fury and Hecla Strait.

November 23-30

- 9-9+ tenths grey and grey-white ice except 9-9+ tenths grey-white and first-year ice in the northern and eastern sections.
- 9-9+ tenths first-year ice including a trace of second-year ice in Fury and Hecla Strait.

## **Northwestern Hudson Bay.**

November 1-15

- Open water except 4-6 tenths new and grey ice along parts of the coasts.

November 16 – 22

- Open water except 7-8 tenths grey ice along parts of the coasts.

November 23-30

- Open water except 9-9+ tenths grey and grey-white ice along parts of the coasts and in the northern section.

## **Eastern Hudson Bay – James Bay**

November 1-7

- Open water except bergy water in the extreme northern section.

November 8-22

- Open water except 1-3 tenths new ice along parts of the coasts.
- Bergy water in the extreme northern section.

November 23-30

- Open water except 1-3 tenths grey ice along parts of the coasts.
- Bergy water in the extreme northern section.
- Open water except 4-6 tenths grey ice along parts of the coast of James Bay

# Southwestern Hudson Bay.

November 1-7

- Open water except 1-3 tenths new ice along parts of the coast.

November 8-15

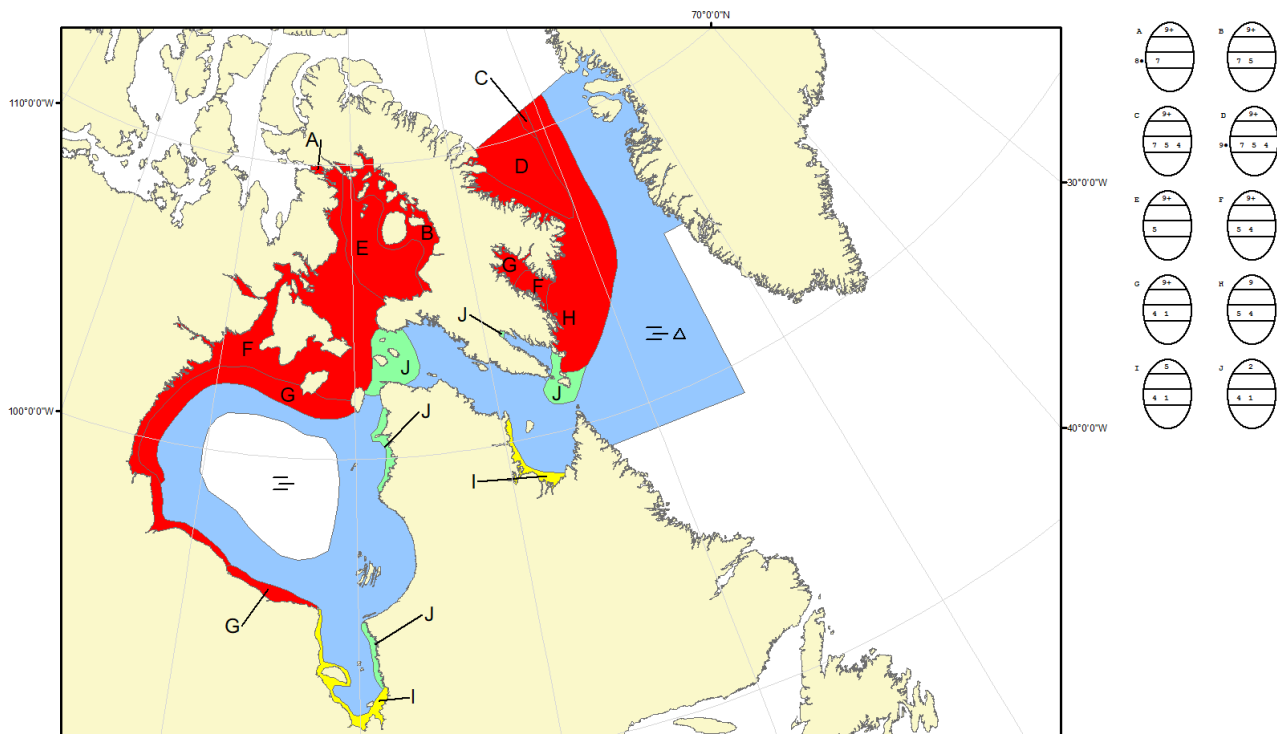
- Open water except 4-6 tenths new ice along parts of the coast.

November 16-22

- Open water except 7-8 tenths new and grey ice along parts of the coast.

November 23-30

- Open water except 9-9+ tenths grey and grey-white ice along parts of the coast.



COLOR CODES BASED ON TOTAL CONCENTRATION			
	ICE FREE		FAST ICE (TEN TENTHS)
	LESS THEN 1 TENTH		7-8 TENTHS
	1-3 TENTHS		9-10 TENTHS
			ICE SHELF
			UNDEFINED ICE

**North American Ice Service /**  
**Service des glaces de l'Amérique du Nord**  
**ICE FORECAST - 30 DAY**  
**PRÉVISIONS DES GLACES - 30 JOURS**  
**VALID/VALIDE: 30 NOV/30 NOV. 2023**