

FECN14 CWIS 011800

THIRTY DAY ICE OUTLOOK FOR THE WESTERN AND CENTRAL ARCTIC FOR NOVEMBER
ISSUED BY ENVIRONMENT CANADA ON 01 NOVEMBER 2023.

THE NEXT 30 DAY OUTLOOK WILL BE ISSUED ON 15 NOVEMBER 2023.

Summary for October 12 to October 30.

Average air temperatures were above normal for all regions. Freeze up is currently 2-3 weeks late for Prince of Wales Strait, McClintock Channel, Larsen Sound, Peel Sound, St. Roch Basin, and Queen Maud Gulf. Freeze up is 1-2 weeks late for the southern Beaufort Sea, Amundsen Gulf and Coronation Gulf.

Weather forecast for November.

Air temperatures are forecast to be above normal for the northwestern Beaufort Sea, western Parry Channel, and McClintock Channel. Near normal temperatures are expected elsewhere.

Southeastern Beaufort Sea.

November 1 – 7

- 1 – 3 tenths new and grey ice except 9 – 9+ tenths grey-white and multi-year ice in the extreme northeastern section.
- 7 – 8 tenths grey and grey-white ice along parts of the coast.

November 8 – 15

- 7 – 8 tenths new and grey ice except 9 – 9+ grey-white and multi-year ice in the extreme northeastern section
- Consolidated grey-white ice along parts of the coast.

November 16 – 22

- 9 – 9+ tenths grey ice except 9 – 9+ grey-white and multi-year ice in the extreme northeastern section.
- Consolidated grey-white ice along the coast.

November 23 – 30

- 9 – 9+ tenths grey-white ice except 9 – 9+ tenths grey-white, first-year and multi-year ice in the northeastern section.
- Consolidated first-year ice along parts of the coast.

Amundsen Gulf.

November 1 – 7

- Open water except 1 – 3 tenths new ice along parts of the coasts.

November 8 – 15

- 7 – 8 tenths new and grey ice except 9 – 9+ tenths grey and grey-white ice including a trace of multi-year ice near Prince of Wales Strait.

November 16 – 30

- 9 – 9+ tenths grey and grey-white ice except 9 – 9+ tenths grey-white ice including a trace of multi-year ice near Princes of Wales Strait.
- Consolidated grey-white ice along parts of the coast

Northern Alaskan Coast.

November 1 – 7

- 1 – 3 tenths new ice except 9 – 9+ tenths grey and grey-white ice along the coast.

November 8 – 15

- 4 – 6 tenths new and grey ice except 9 – 9+ tenths grey-white ice along the coast.

November 16 – 22

- 9 – 9+ tenths grey and grey-white ice.
- Consolidated first-year ice along parts of the coast.

November 23 – 30

- 9 – 9+ tenths grey-white ice.
- Consolidated first-year ice along parts of the coast.

Western Alaskan Coast.

November 1 – 15

- Open water except 7 – 8 tenths new and grey ice along parts of the coast.

November 16 – 22

- Open water except consolidated grey-white ice along parts of the coast.

November 23 – 30

- Open water except 9 – 9+ tenths grey and grey-white ice in the extreme northeastern section.
- Consolidated grey-white ice along parts of the coast.

Coronation Gulf.

November 1 – 7

- Open water except 1 – 3 tenths new and grey ice along parts of the coasts.

November 8 – 15

- Open water except 7 – 8 tenths new ice in the eastern section.
- 1 – 3 tenths new and grey ice along parts of the coasts.

November 16 – 22

- 9 – 9+ tenths new and grey ice except 9 – 9+ tenths grey and grey-white ice in the eastern section.

November 23 – 30

- 9 – 9+ tenths grey and grey-white ice.
- Consolidated grey-white ice in the eastern section.

Queen Maud Gulf.

November 1 – 7

- Open water except 7 – 8 tenths new and grey ice along the coasts.

November 8 – 15

- 4 – 6 tenths new and grey ice.
- Consolidated grey ice along parts of the coasts.

November 16 – 22

- 9 – 9+ tenths new and grey ice.
- Consolidated grey-white ice along parts of the coasts.

November 23 – 30

- 9 – 9+ tenths grey and grey-white ice.
- Consolidated grey-white ice along parts of the coasts.

Victoria Strait – Larsen Sound.

November 1 – 7

- 4 – 6 tenths new ice.

November 8 – 15

- 9 – 9+ tenths new and grey ice.

November 16 – 22

- 9 – 9+ tenths grey and grey-white ice.

November 23 – 30

- 9 – 9+ tenths grey-white ice.

Prince of Wales Strait.

Northern Beaufort Sea south of 75°N.

Arctic Ocean north of 75°N.

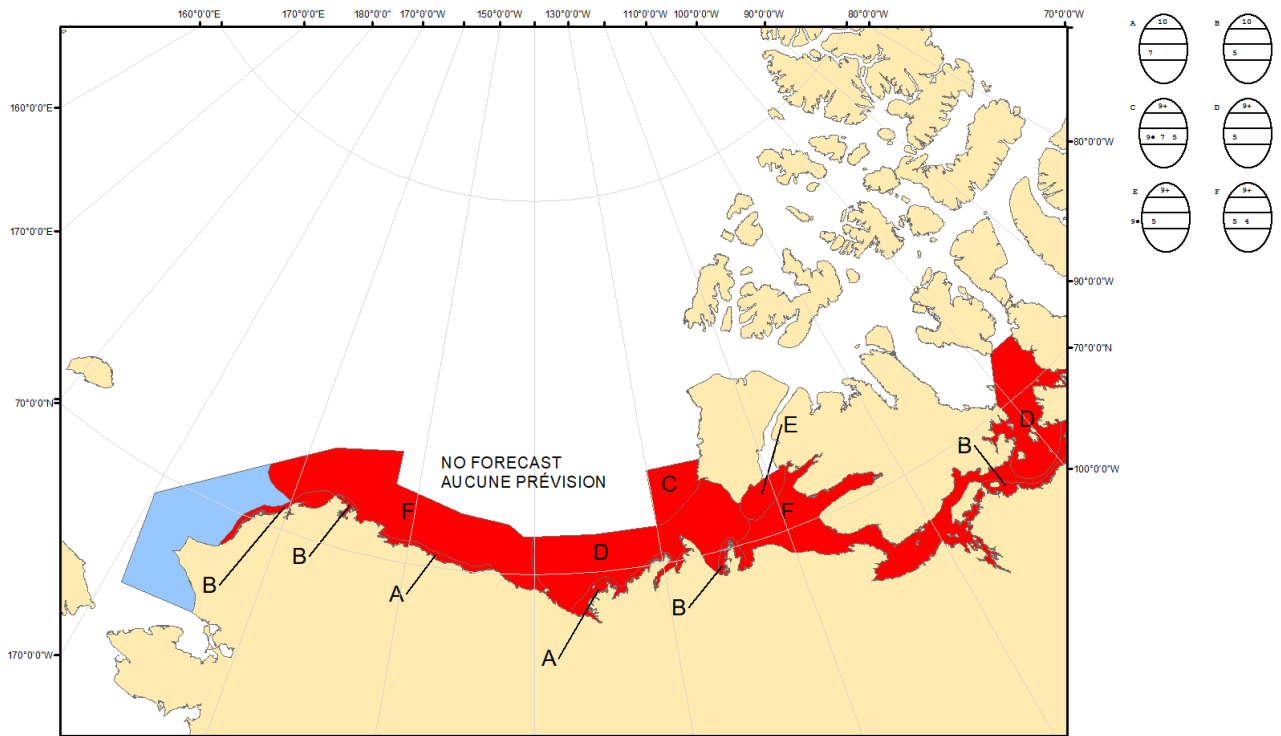
Peel Sound.

M'Clintock Channel.

Viscount Melville Sound.

M'Clure Strait.

Forecast have ended for the season.



COLOR CODES BASED ON TOTAL CONCENTRATION

	ICE FREE		4-6 TENTHS		PAST ICE (TEN TENTHS)
	LESS THEN 1 TENTH		7-8 TENTHS		ICE SHELF
	1-3 TENTHS		9-10 TENTHS		UNDEFINED ICE

North American Ice Service /
Service des glaces de l'Amérique du Nord
ICE FORECAST - 30 DAY
PRÉVISIONS DES GLACES - 30 JOURS
VALID/VALIDE: 30 NOV/NOV. 2023